

Jones Lang LaSalle Brokerage, Inc.
Real estate license #01856260

WORK AT

19TEN SUNSET

LOS ANGELES – CALIFORNIA



WELCOME TO 19TEN

**Dedicated to creative expression
and limitless inspiration.**

Located on Sunset Boulevard, 19Ten is embedded at the center of L.A.'s hottest neighborhoods for the arts and entertainment industry. This enclave has recently undergone a renaissance and is known for its growing community of makers and thinkers who live and work in a hub for art, music, and experience.

+ **LIFESTYLE AMENITIES**

L.A.'s top eateries and essential shops at your doorstep

+ **EXPLORER'S PARADISE**

97 Walk Score

+ **IN GOOD COMPANY**

10 minutes to DTLA and Hollywood

A 5 MINUTE WALK

17 **LUNCH
FAVORITES**

6 **COFFEE
SHOPS**

7 **DRINK
SPOTS**

2 **WEEKEND
MARKETS**

Address:

1910 West Sunset Boulevard
Los Angeles, California 90026

Building Size:

99,761 SF

Suite Sizes:

744 - 7,549 RSF

Parking:

On-Site

Availability:

Now

Spec suite available now!

[Click here to learn more](#)



DISCOVER THE EASTSIDE

ECHO PARK & SILVERLAKE



COMMUNITY FAVORITES



EATS

- Triple Beam Pizza
- Sticky Rice
- Masa
- Sage Plant Bistro & Brewery
- Honey Hi
- Monty's Good Burger
- Ostrich Farm
- Hard Times Pizza
- Larchmont Bungalow Cage
- Chipotle
- Mohawk Bend
- Silverlake Ramen 2Go



COFFEE

- Stories
- Silverback
- Woodcat
- Stereoscope
- Starbucks
- Tierra Mia



BARS

- Bar Flores
- Lowboy
- Bar Calo
- Little Joy
- Short Stop
- Sunset Beer
- Semi Tropic



MUSIC VENUES

- The Echoplex
- The Echo
- Bootleg
- Club Bahia
- Stories
- Silverlake Lounge
- Los Globos
- El Cid
- The Lyric
- Dodger Stadium

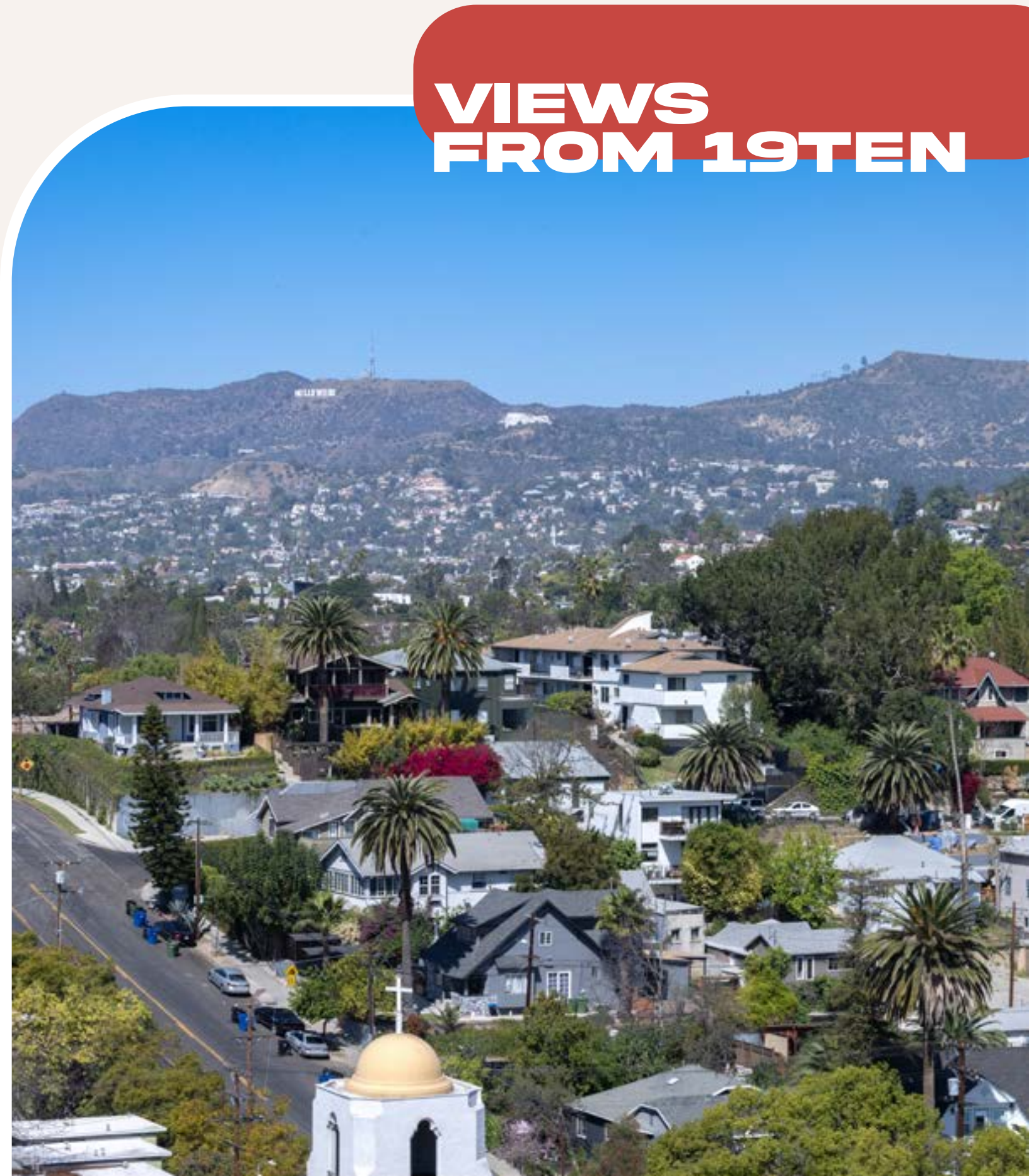


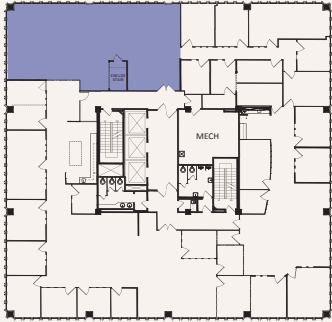
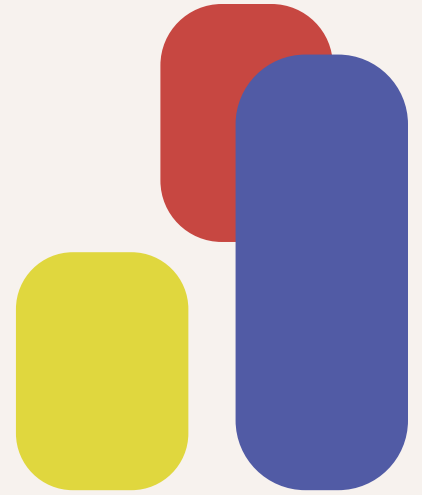
WELLNESS

- Erewhon
- Crossfit Echo Park
- Carbon Health
- Stronghold Climbing Gym
- Echo Park Lake
- Elysian Park
- The Strength Shoppe
- The Now Massage
- PHAROS
- Lassen's
- Echo Park Farmer's Market
- Silverlake Flea Market
- Walgreens



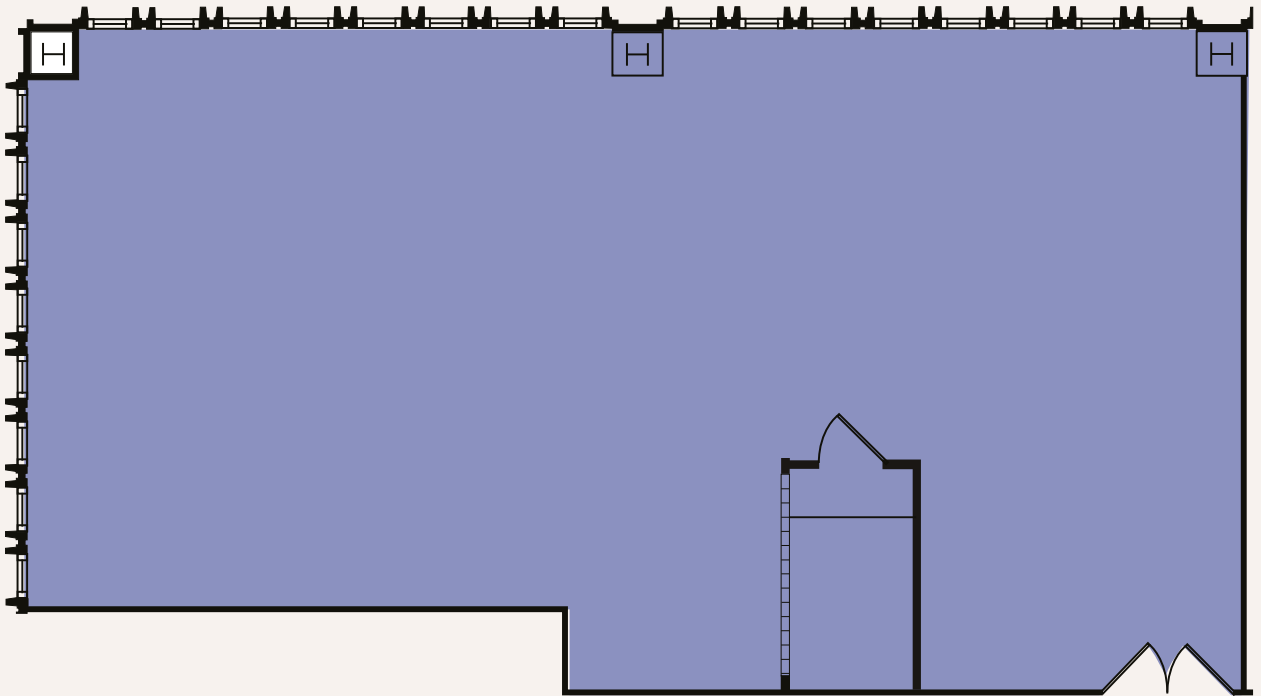
VIEWS FROM 19TEN

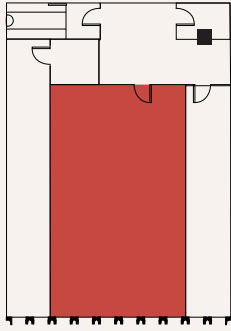
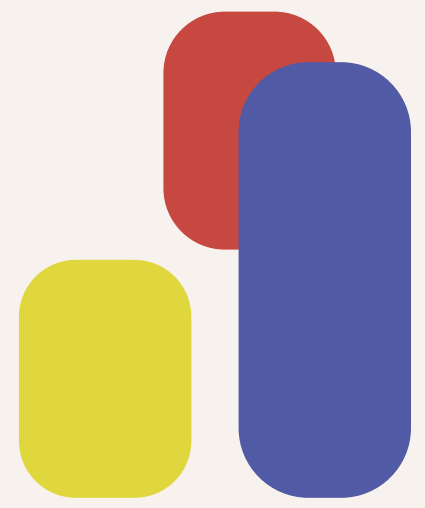
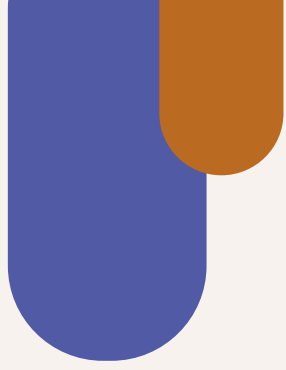




Suite 200

2,181 RSF



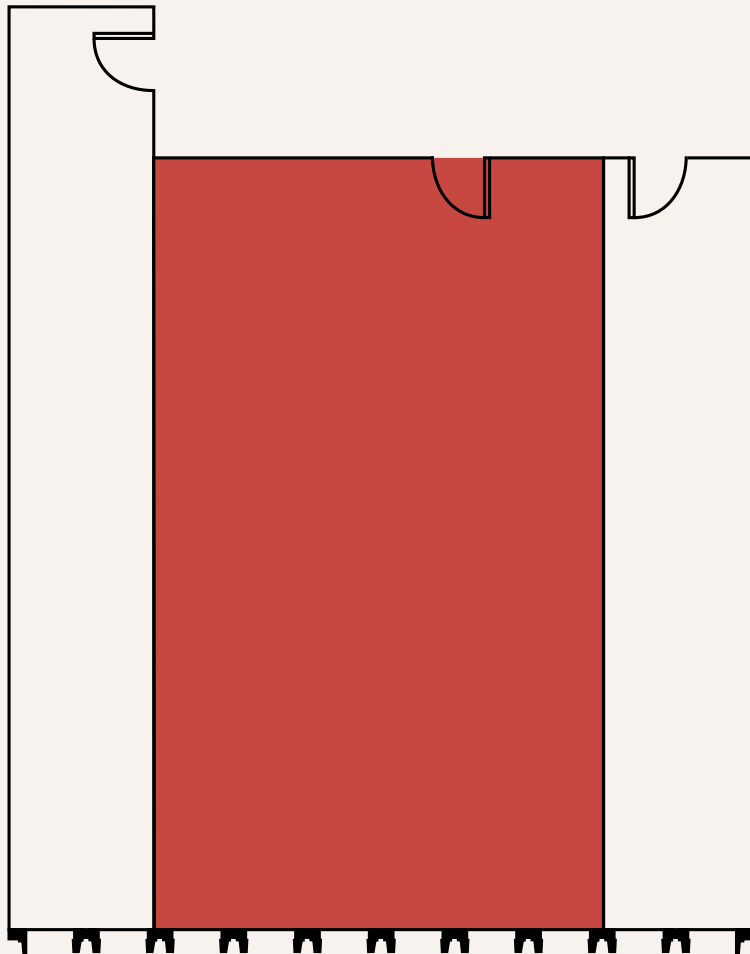


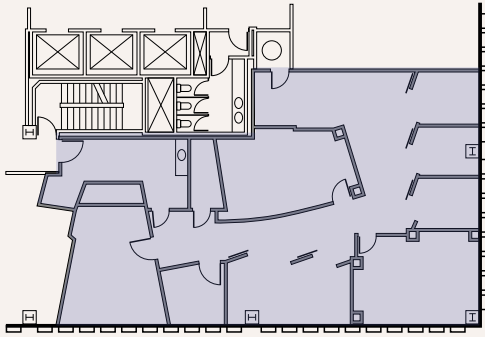
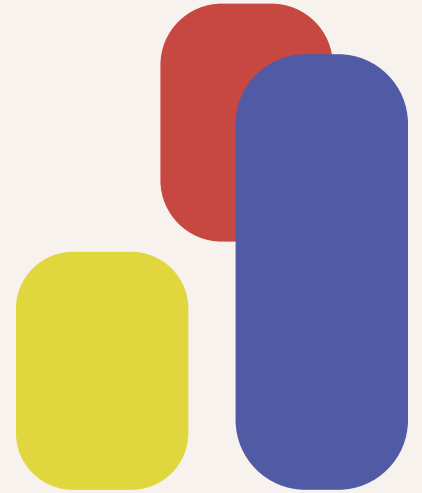
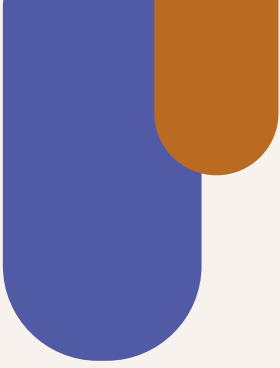
Suite 430



744 RSF

Available now

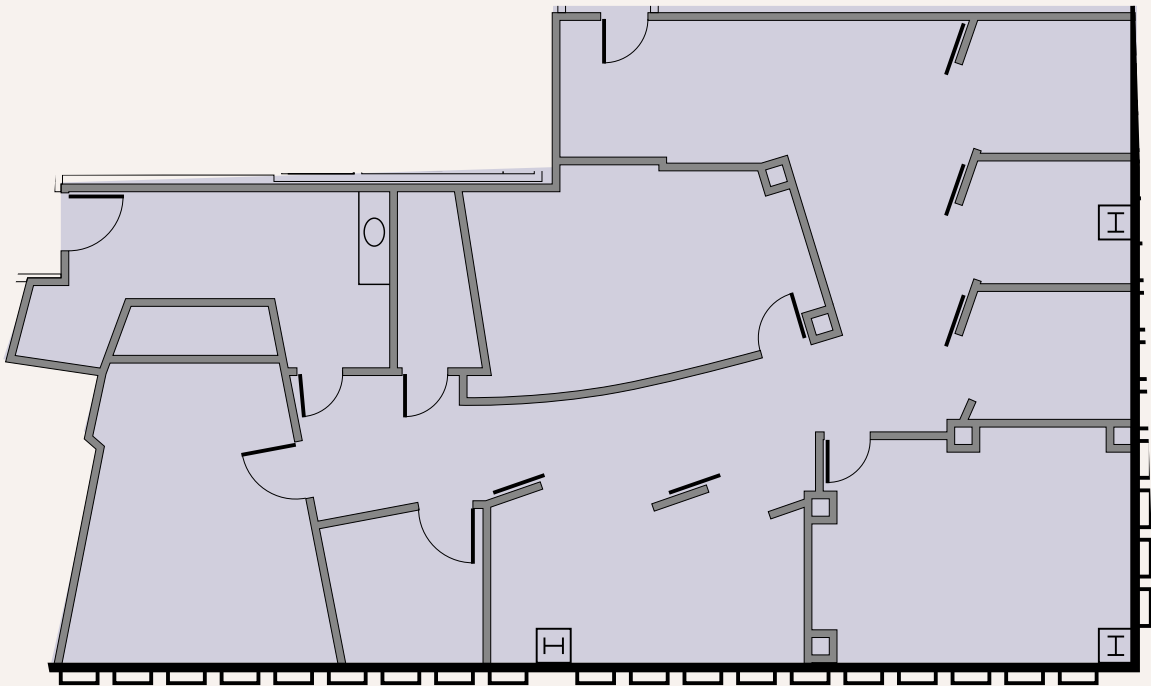


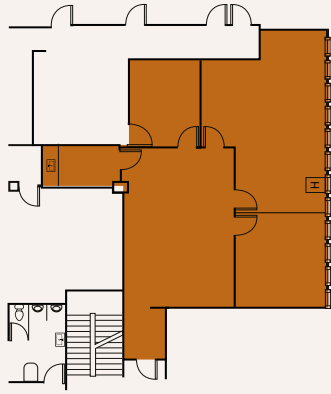


Suite 420

3,468 RSF

Available now

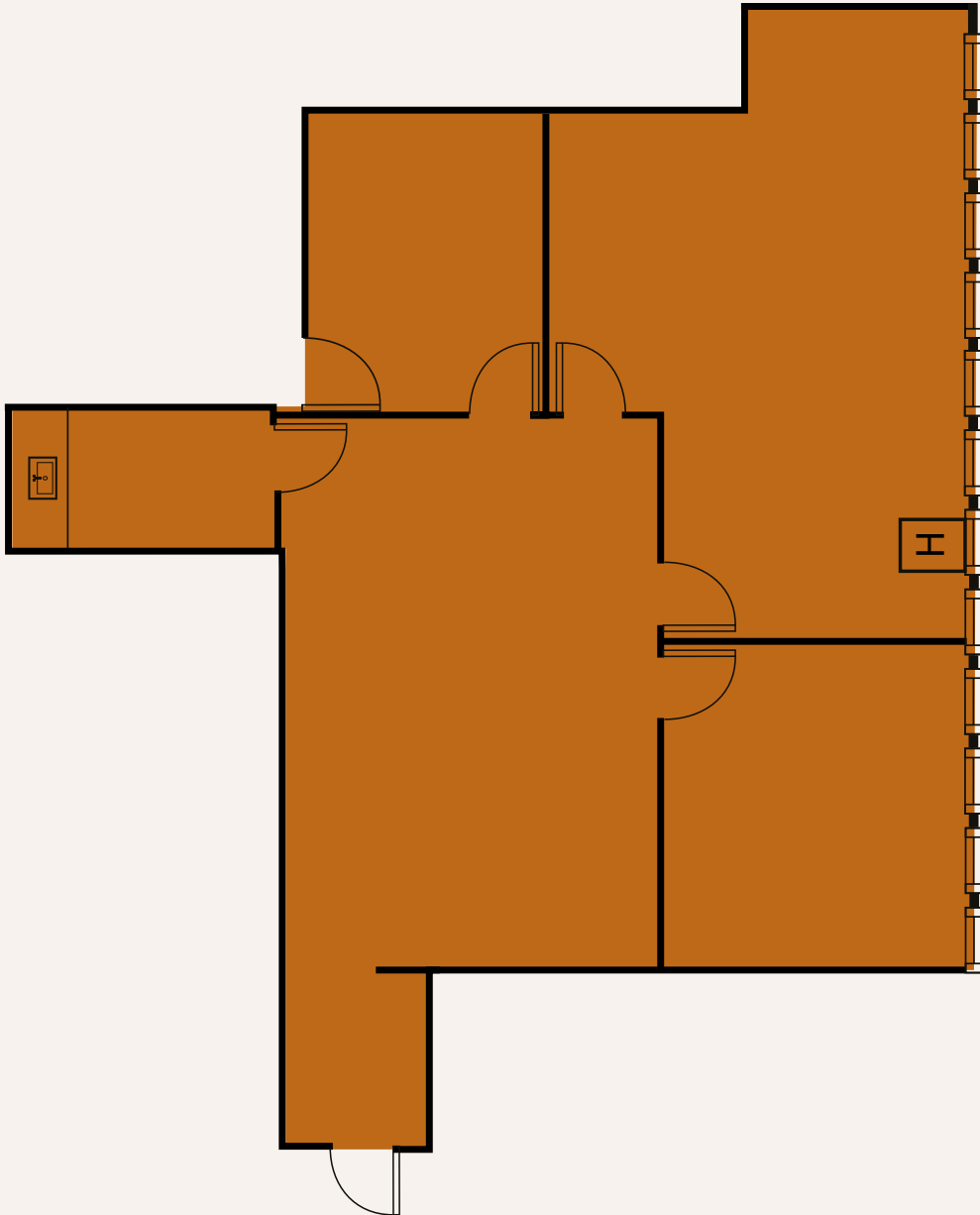


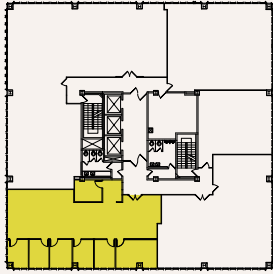


Suite 705

1,935 RSF

Available now



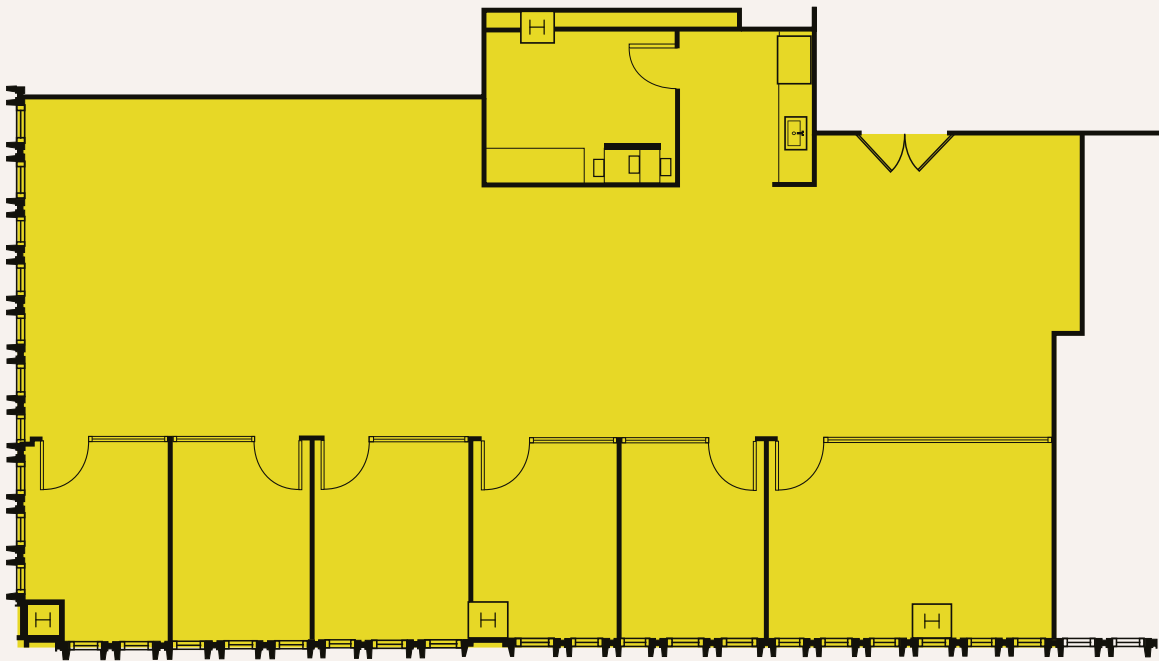


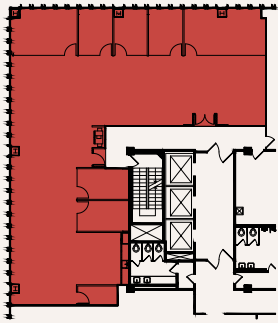
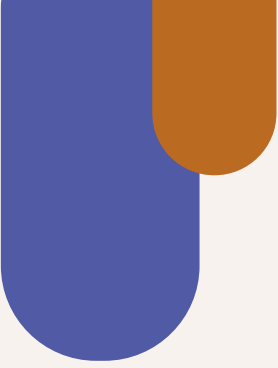
Suite 800

2,907 RSF

Hypothetical spec suite

Available now



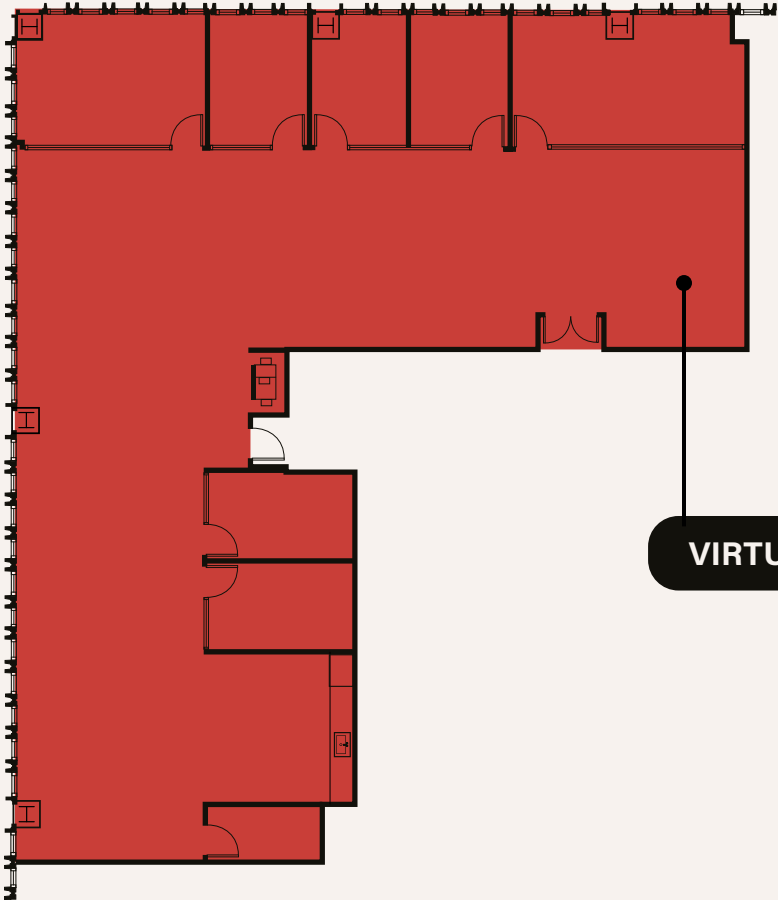


Suite 850

4,642 RSF

Spec Suite

Available now



VIRTUAL TOUR

EXAMPLE SPEC SUITE RENDERINGS





EXAMPLE SPEC SUITE RENDERINGS





19TEN SUNSET

LOS ANGELES - CALIFORNIA

FOR LEASING INFORMATION

NICOLE MIHALKA

Managing Director, LIC #01322414

nicole.mihalka@jll.com

+1 213 239 6076

CAL ROSS

Vice President, LIC #01892435

cal.ross@jll.com

+1 213 239 6339

DANA VARGAS

Senior Vice President, LIC #01943620

dana.vargas@jll.com

+1 213 239 6121



Downtown Los Angeles Office

515 Flower St # 1300, Los Angeles, CA 90071