

13,291 SF Warehouse



Warehouse • \$2,100,000
770 E Evans Blvd
Tucson, Arizona 85713



ROB LAMB
Cell # 520-444-4411
roblamb@roblamb.com

Property Information

Address: 770 E Evans Blvd
Tucson, Arizona 85713

Acres: 0.868 Acres
37,832 SF

Parcel ID: 132-15-003L

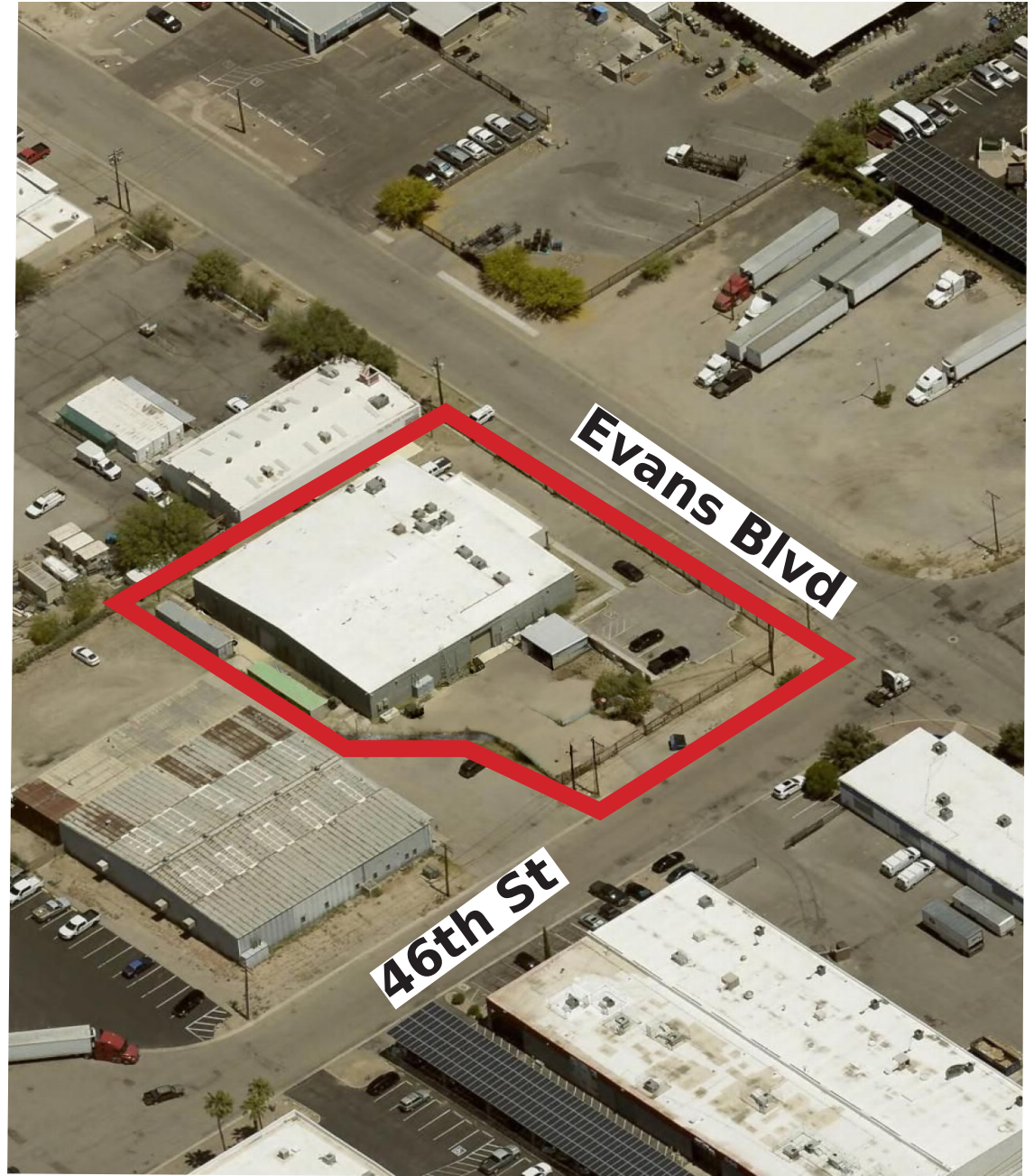
Zoning: I-1 Industrial

Price: \$2,100,000

SF: 13,291 SF

Property Description

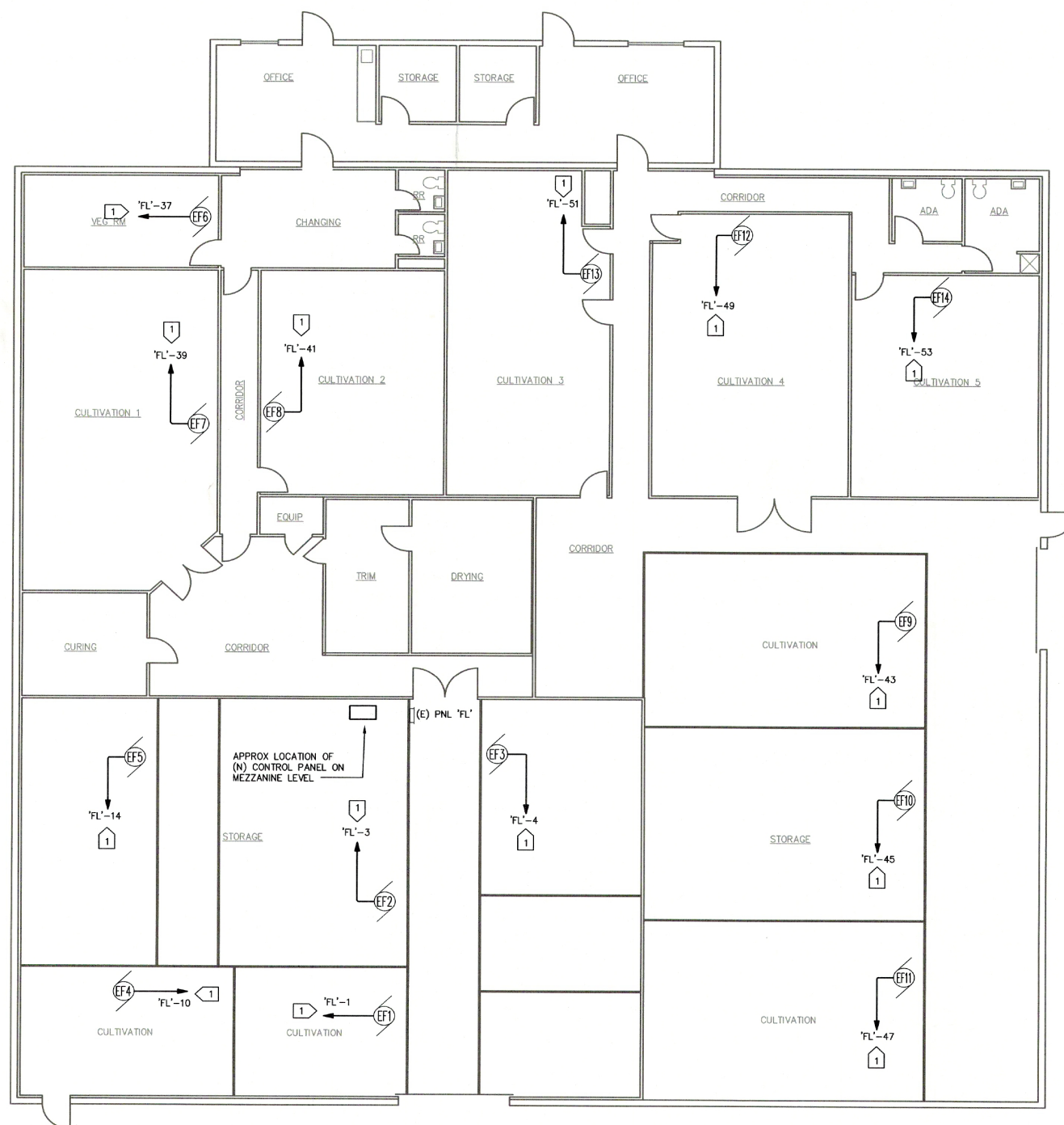
Over \$1,500,000 complete interior and exterior warehouse remodel in late 2018: (more information available upon request). Improvements include 2900 AMP 3 Phase Electric, Fence, Security cameras, laser's, Electric gates and shutters, 17' dock doors, etc. The property consists of .868 AC lot with a 13,291 SF warehouse and is close to I-10. Zoned I-1 allowing for many industrial uses. Previously used as a Marijuana Cultivation Facility and currently has all of the equipment, lights, and tables.



Warehouse • \$2,100,000
770 E Evans Blvd
Tucson, Arizona 85713



ROB LAMB
Cell # 520-444-4411
roblamb@roblamb.com



Warehouse • \$2,100,000
770 E Evans Blvd
Tucson, Arizona 85713



ROB LAMB
Cell # 520-444-4411
roblamb@roblamb.com



Warehouse • \$2,100,000
770 E Evans Blvd
Tucson, Arizona 85713



ROB LAMB
Cell # 520-444-4411
roblamb@roblamb.com



Warehouse • \$2,100,000
770 E Evans Blvd
Tucson, Arizona 85713



ROB LAMB
Cell # 520-444-4411
roblamb@roblamb.com



Warehouse • \$2,100,000
770 E Evans Blvd
Tucson, Arizona 85713



ROB LAMB
Cell # 520-444-4411
roblamb@roblamb.com



Warehouse • \$2,100,000
770 E Evans Blvd
Tucson, Arizona 85713



ROB LAMB
Cell # 520-444-4411
roblamb@roblamb.com