



FOR SUBLEASE

# 365 Swift Avenue

SUITE 365 | SOUTH SAN FRANCISCO, CA



±5,920 SF industrial space with ±1,000 SF office minutes from Highway 101

**CARLA SCIMEMI**  
415.229.8955  
carla.scimemi@kidder.com  
LIC N° 01323582

**Kidder  
Mathews**

This information supplied herein is from sources we deem reliable. It is provided without any representation, warranty, or guarantee, expressed or implied as to its accuracy. Prospective Buyer or Tenant should conduct an independent investigation and verification of all matters deemed to be material, including, but not limited to, statements of income and expenses. Consult your attorney, accountant, or other professional advisor.

**KIDDER.COM**

**FOR SUBLEASE**

# 365 Swift Avenue

SUITE 365 | SOUTH SAN FRANCISCO

**±1,000 SF** air conditioned office space with two (2) restrooms, three (3) private offices, open area, storage room

**LED** of February 2024

**TWO (2)** dock-high doors

**ONE (1)** grade-level doors

**24'** clear height

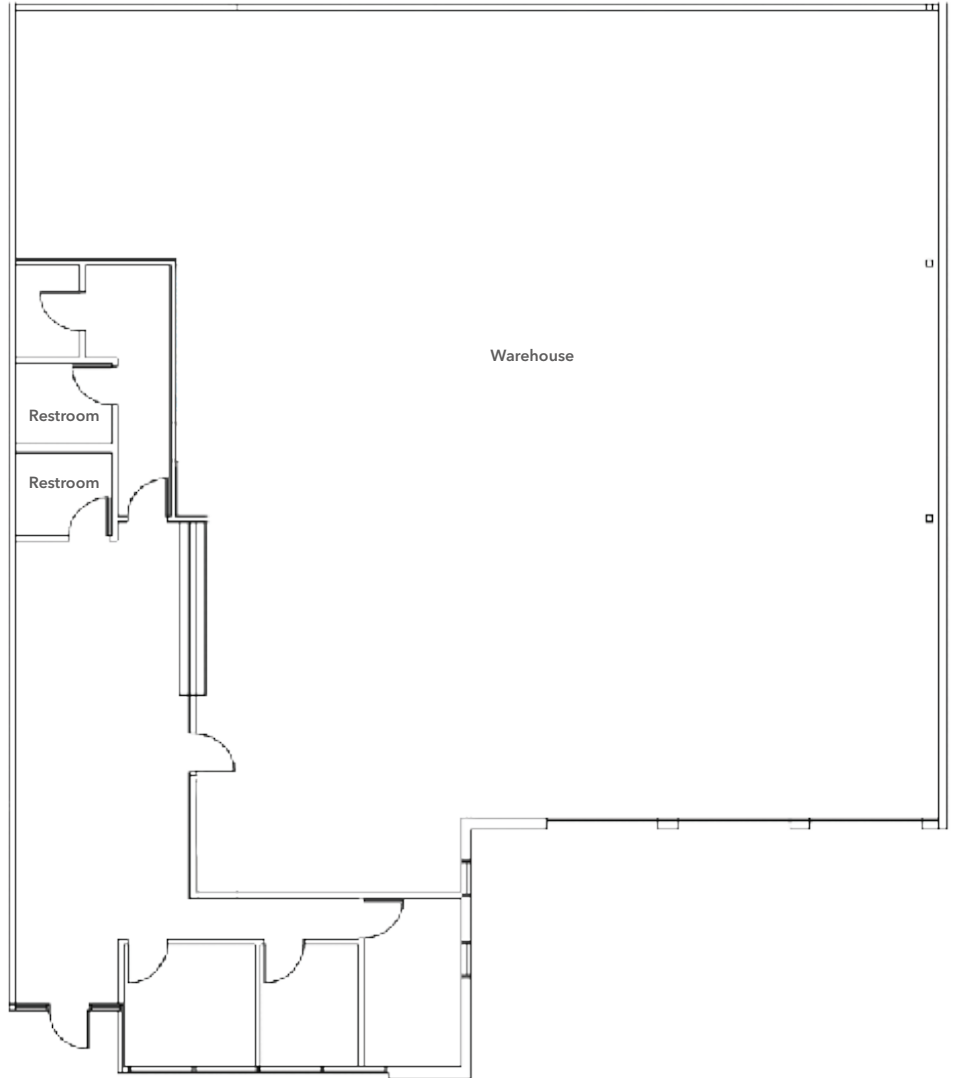
**FIRE** sprinklers

**POWER:** 225AMPS/480V

**PARKING:** four (4) reserved, seven (7) unreserved

**QUALITY** industrial space minutes from HWY 101 on the east side of SSF

## Floor Plan



**CARLA SCIMEMI**  
415.229.8955  
carla.scimemi@kidder.com  
LIC N° 01323582

**KIDDER.COM**



This information supplied herein is from sources we deem reliable. It is provided without any representation, warranty, or guarantee, expressed or implied as to its accuracy. Prospective Buyer or Tenant should conduct an independent investigation and verification of all matters deemed to be material, including, but not limited to, statements of income and expenses. Consult your attorney, accountant, or other professional advisor.

FOR SUBLEASE

# 365 Swift Avenue

SUITE 365 | SOUTH SAN FRANCISCO



KIDDER.COM

This information supplied herein is from sources we deem reliable. It is provided without any representation, warranty, or guarantee, expressed or implied as to its accuracy. Prospective Buyer or Tenant should conduct an independent investigation and verification of all matters deemed to be material, including, but not limited to, statements of income and expenses. Consult your attorney, accountant, or other professional advisor.

