

Building A

SUBMITTED BY
Ironhorn Enterprises
info@ironhornenterprises.com

CREATED ON
2024-04-04

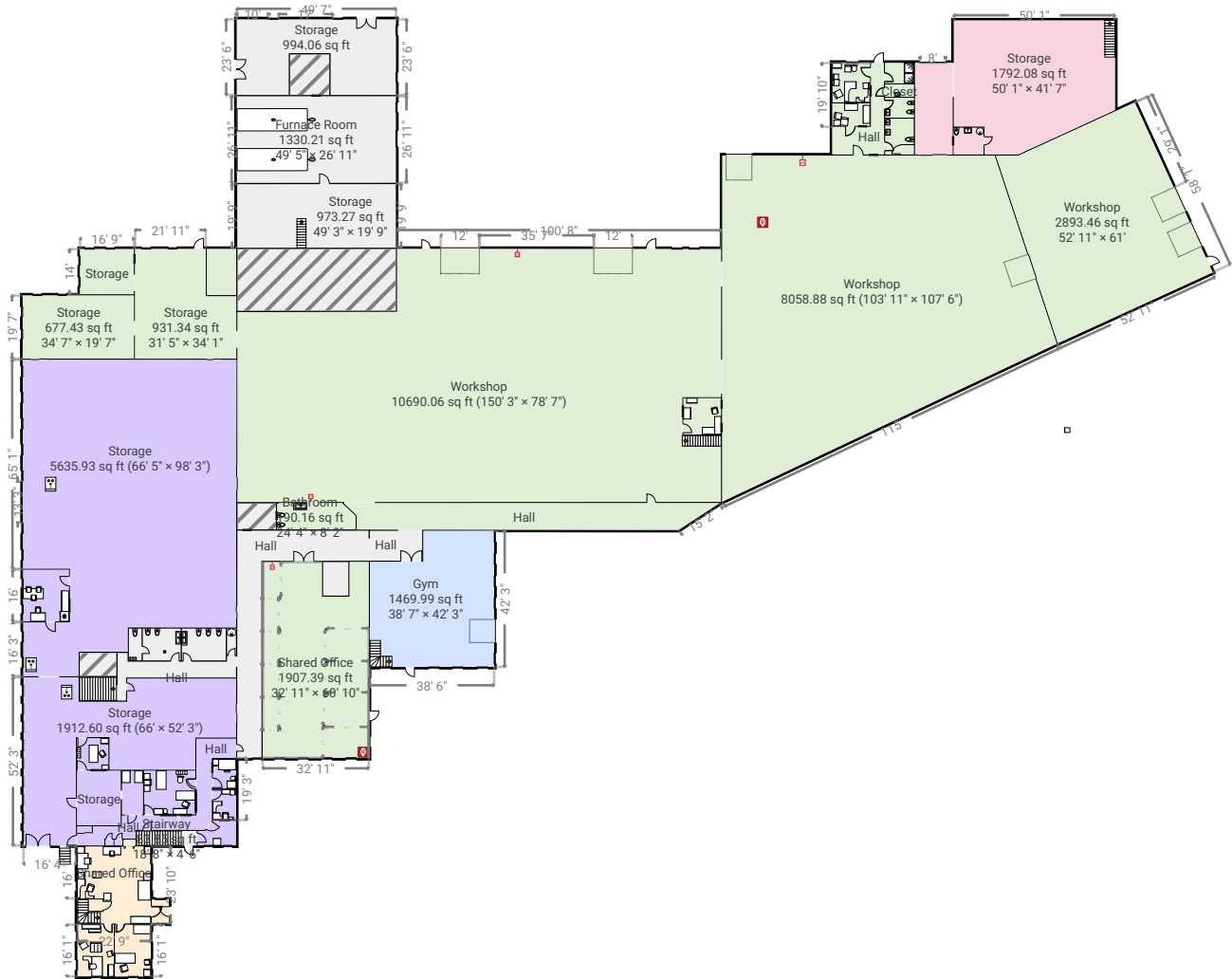
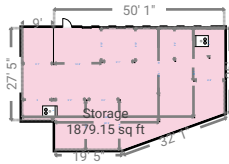
Total area 69728.96 sq ft	Floors 3	Rooms 107	Conf. rooms 3
-------------------------------------	--------------------	---------------------	-------------------------

Building A

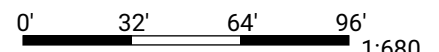
TOTAL AREA: 69728.96 sq ft • LIVING AREA: 69728.96 sq ft • FLOORS: 3 • ROOMS: 107

▼ 1st Floor

TOTAL AREA: 51340.08 sq ft • LIVING AREA: 51340.08 sq ft • ROOMS: 57



THIS FLOORPLAN IS PROVIDED WITHOUT WARRANTY OF ANY KIND. SENSOPIA DISCLAIMS ANY WARRANTY INCLUDING, WITHOUT LIMITATION, SATISFACTORY QUALITY OR ACCURACY OF DIMENSIONS.



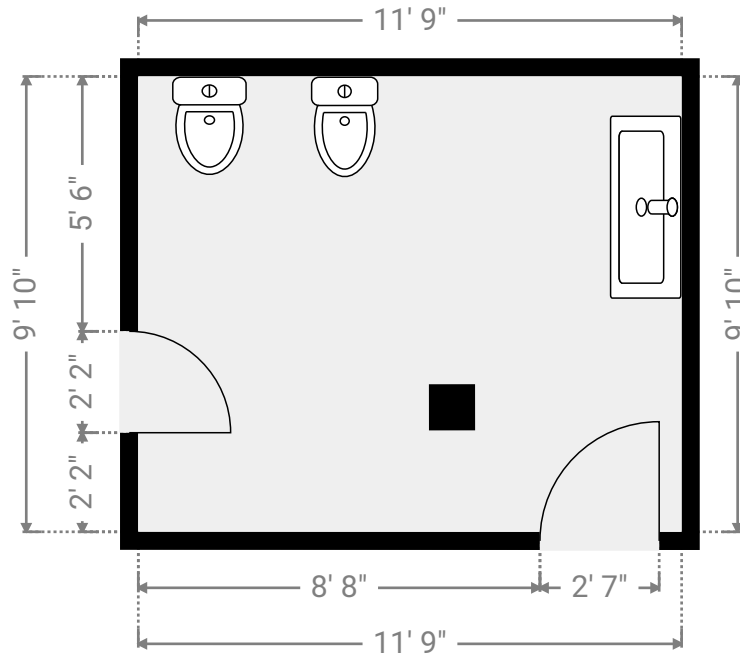
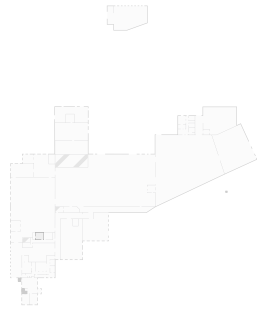
Building A

TOTAL AREA: 69728.96 sq ft • LIVING AREA: 69728.96 sq ft • FLOORS: 3 • ROOMS: 107



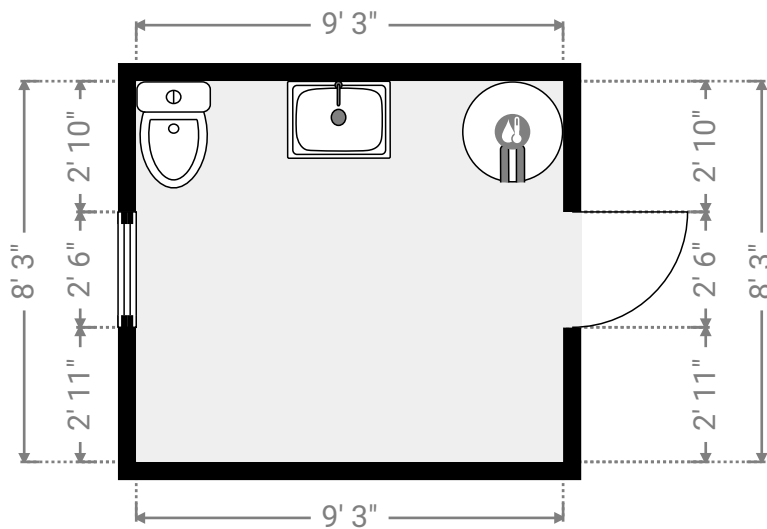
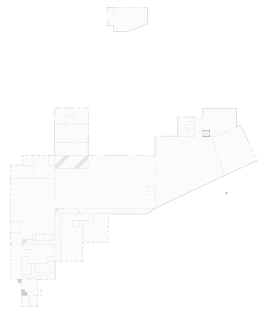
▼ Bathroom 1st Floor

WIDTH: 11' 9" • LENGTH: 9' 10" • CEILING HEIGHT: 7' 6"
AREA: 116.18 sq ft • PERIMETER: 43' 3"



▼ Bathroom 1st Floor

WIDTH: 9' 3" • LENGTH: 8' 3" • CEILING HEIGHT: 11' 10"
AREA: 76.32 sq ft • PERIMETER: 35'



THIS FLOORPLAN IS PROVIDED WITHOUT WARRANTY OF ANY KIND. SENSOPIA DISCLAIMS ANY WARRANTY INCLUDING, WITHOUT LIMITATION, SATISFACTORY QUALITY OR ACCURACY OF DIMENSIONS.



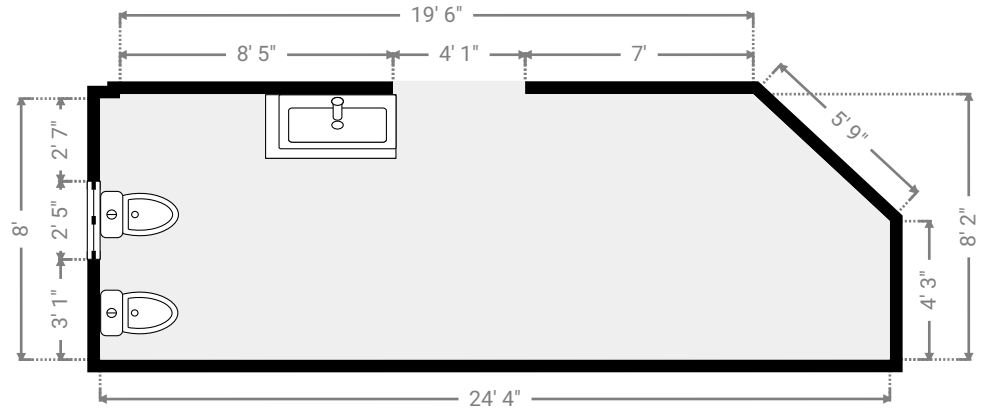
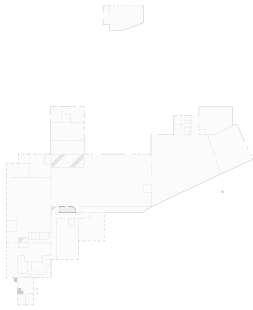
Building A

TOTAL AREA: 69728.96 sq ft • LIVING AREA: 69728.96 sq ft • FLOORS: 3 • ROOMS: 107



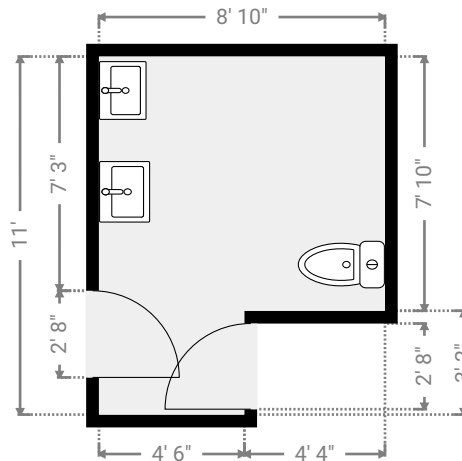
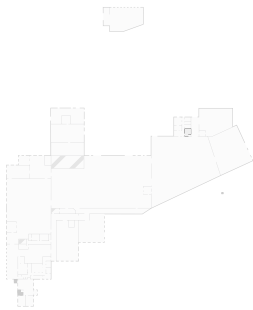
▼ Bathroom 1st Floor

WIDTH: 24' 4" • LENGTH: 8' 2" • CEILING HEIGHT: 11' 10"
AREA: 190.16 sq ft • PERIMETER: 62' 7"

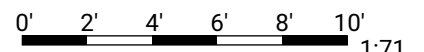


▼ Bathroom 1st Floor

WIDTH: 8' 10" • LENGTH: 11' • CEILING HEIGHT: 8'
AREA: 83.15 sq ft • PERIMETER: 39' 8"



THIS FLOORPLAN IS PROVIDED WITHOUT WARRANTY OF ANY KIND. SENSOPIA DISCLAIMS ANY WARRANTY INCLUDING, WITHOUT LIMITATION, SATISFACTORY QUALITY OR ACCURACY OF DIMENSIONS.



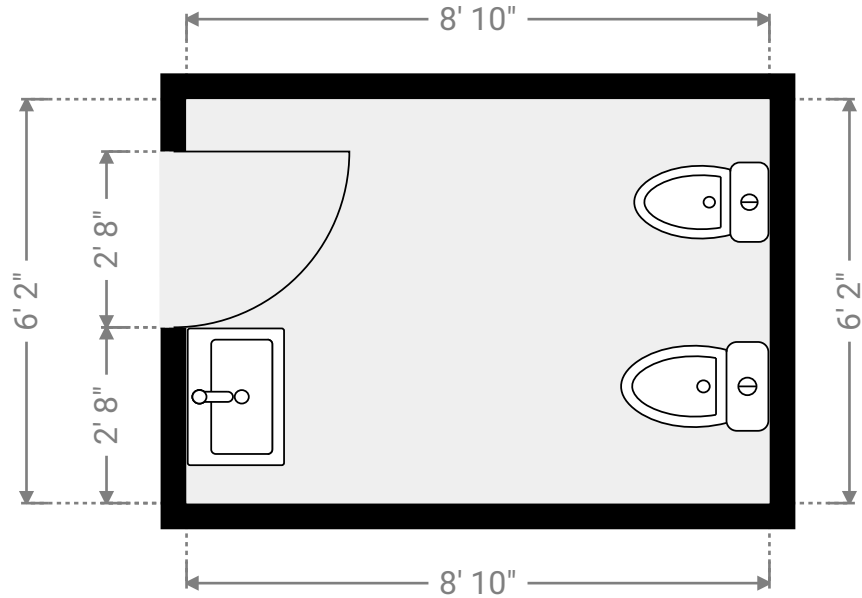
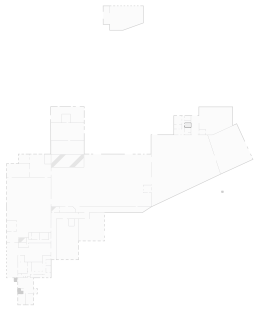
Building A

TOTAL AREA: 69728.96 sq ft • LIVING AREA: 69728.96 sq ft • FLOORS: 3 • ROOMS: 107



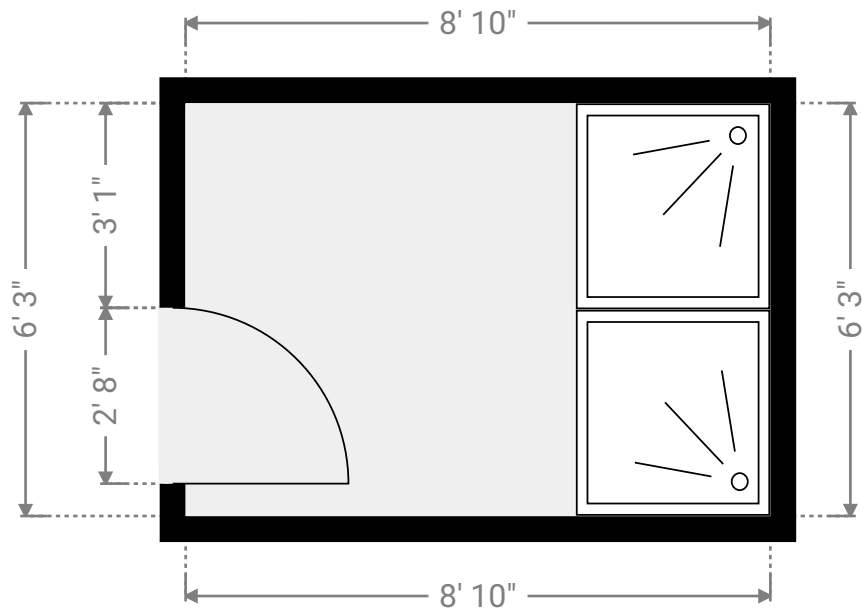
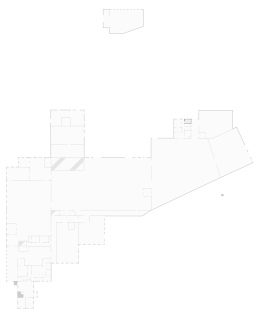
▼ Bathroom 1st Floor

WIDTH: 8' 10" • LENGTH: 6' 2" • CEILING HEIGHT: 8'
AREA: 54.18 sq ft • PERIMETER: 29' 11"



▼ Bathroom 1st Floor

WIDTH: 8' 10" • LENGTH: 6' 3" • CEILING HEIGHT: 7' 9"
AREA: 55.56 sq ft • PERIMETER: 30' 3"



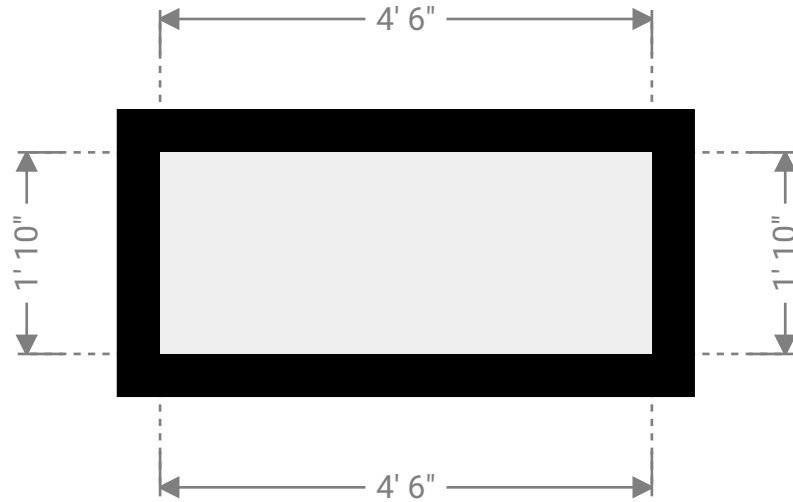
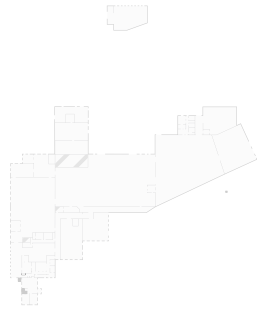
Building A

TOTAL AREA: 69728.96 sq ft • LIVING AREA: 69728.96 sq ft • FLOORS: 3 • ROOMS: 107



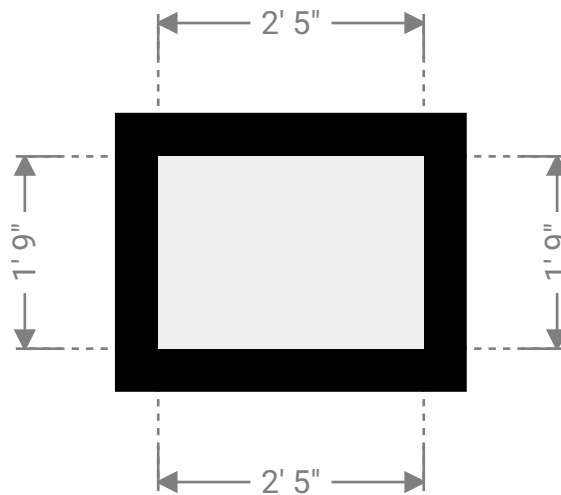
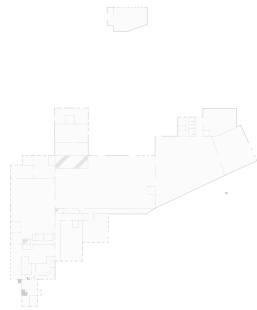
▼ Closet 1st Floor

WIDTH: 4' 6" • LENGTH: 1' 10" • CEILING HEIGHT: 11' 10"
AREA: 8.21 sq ft • PERIMETER: 12' 7"



▼ Closet 1st Floor

WIDTH: 2' 5" • LENGTH: 1' 9" • CEILING HEIGHT: 11' 10"
AREA: 4.23 sq ft • PERIMETER: 8' 4"



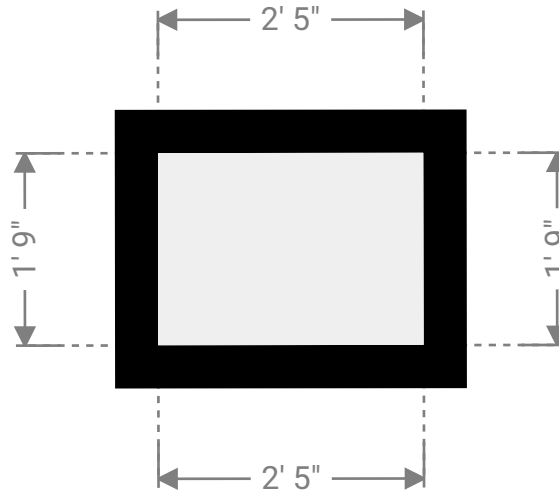
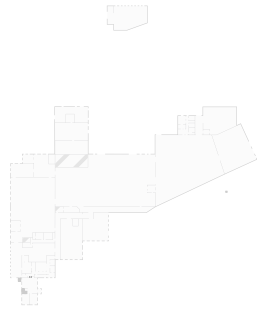
Building A

TOTAL AREA: 69728.96 sq ft • LIVING AREA: 69728.96 sq ft • FLOORS: 3 • ROOMS: 107



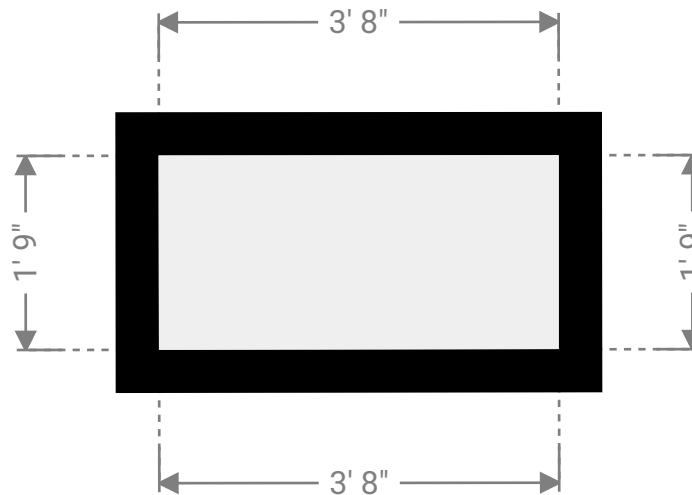
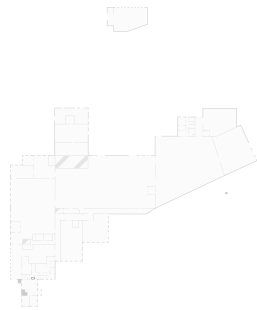
▼ Closet 1st Floor

WIDTH: 2' 5" • LENGTH: 1' 9" • CEILING HEIGHT: 11' 10"
AREA: 4.23 sq ft • PERIMETER: 8' 4"



▼ Closet 1st Floor

WIDTH: 3' 8" • LENGTH: 1' 9" • CEILING HEIGHT: 11' 10"
AREA: 6.43 sq ft • PERIMETER: 10' 10"



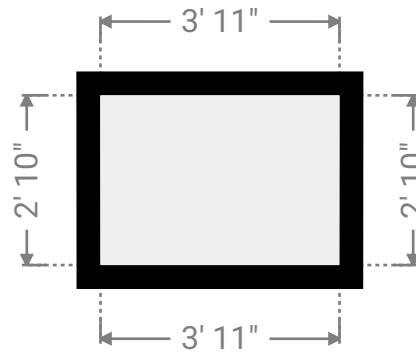
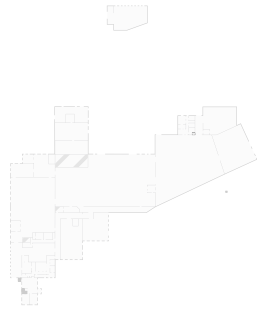
Building A

TOTAL AREA: 69728.96 sq ft • LIVING AREA: 69728.96 sq ft • FLOORS: 3 • ROOMS: 107



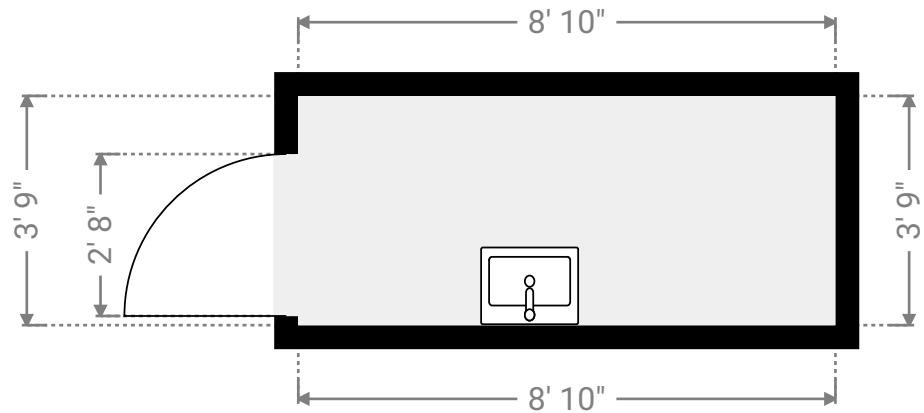
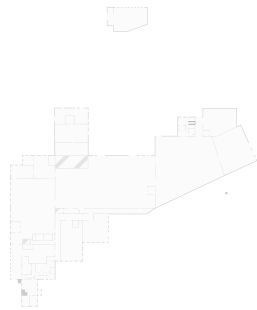
▼ Closet 1st Floor

WIDTH: 3' 11" • LENGTH: 2' 10" • CEILING HEIGHT: 11' 10"
AREA: 11.01 sq ft • PERIMETER: 13' 6"



▼ Closet 1st Floor

WIDTH: 8' 10" • LENGTH: 3' 9" • CEILING HEIGHT: 7' 10"
AREA: 33.40 sq ft • PERIMETER: 25' 3"



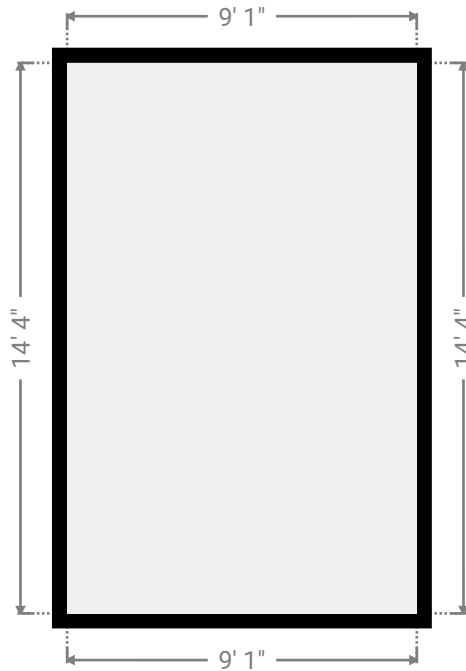
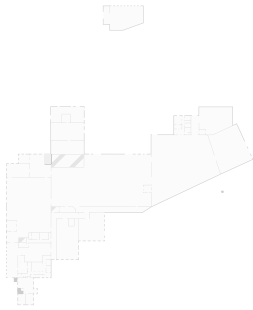
Building A

TOTAL AREA: 69728.96 sq ft • LIVING AREA: 69728.96 sq ft • FLOORS: 3 • ROOMS: 107



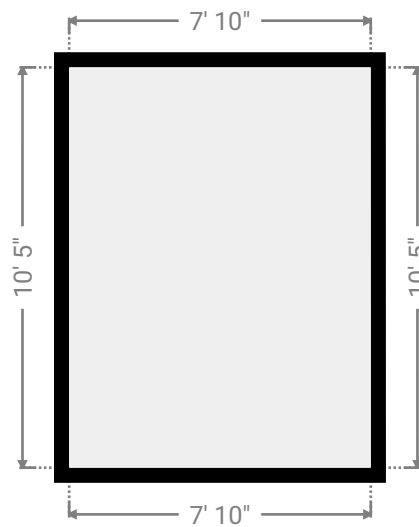
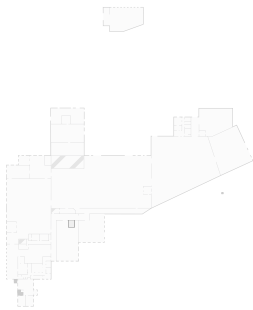
▼ Electrical Cage 1st Floor

WIDTH: 9' 1" • LENGTH: 14' 4" • CEILING HEIGHT: 11' 10"
AREA: 130.15 sq ft • PERIMETER: 46' 10"



▼ Elevators 1st Floor

WIDTH: 7' 10" • LENGTH: 10' 5" • CEILING HEIGHT: 11' 10"
AREA: 81.65 sq ft • PERIMETER: 36' 6"



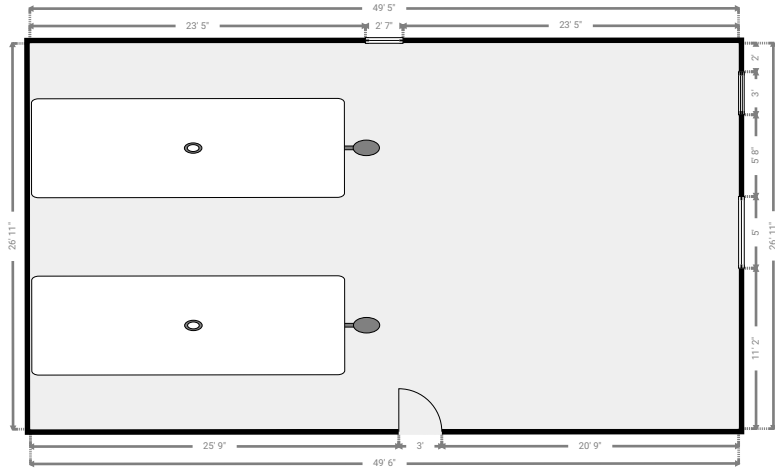
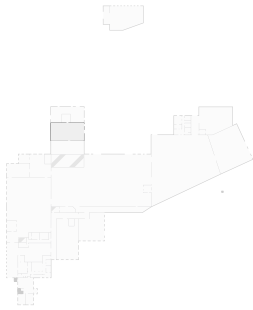
Building A

TOTAL AREA: 69728.96 sq ft • LIVING AREA: 69728.96 sq ft • FLOORS: 3 • ROOMS: 107



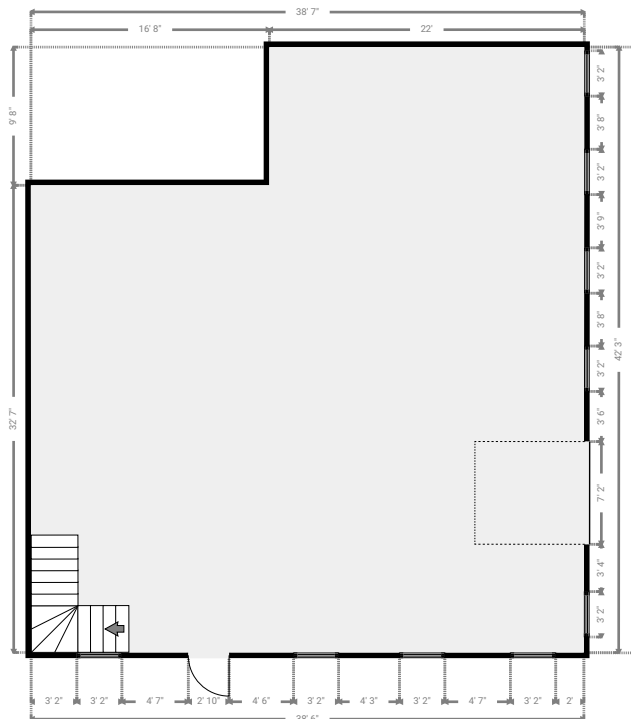
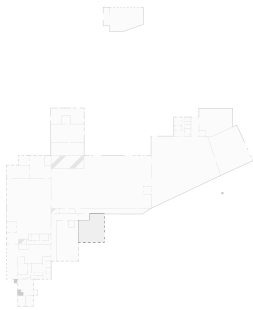
▼ Furnace Room 1st Floor

WIDTH: 49' 5" • LENGTH: 26' 11" • CEILING HEIGHT: 24' 7"
AREA: 1330.21 sq ft • PERIMETER: 152' 8"

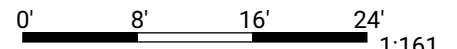


▼ Gym 1st Floor

WIDTH: 38' 7" • LENGTH: 42' 3" • CEILING HEIGHT: 10' 1"
AREA: 1469.99 sq ft • PERIMETER: 161' 8"



THIS FLOORPLAN IS PROVIDED WITHOUT WARRANTY OF ANY KIND. SENSOPIA DISCLAIMS ANY WARRANTY INCLUDING, WITHOUT LIMITATION, SATISFACTORY QUALITY OR ACCURACY OF DIMENSIONS.



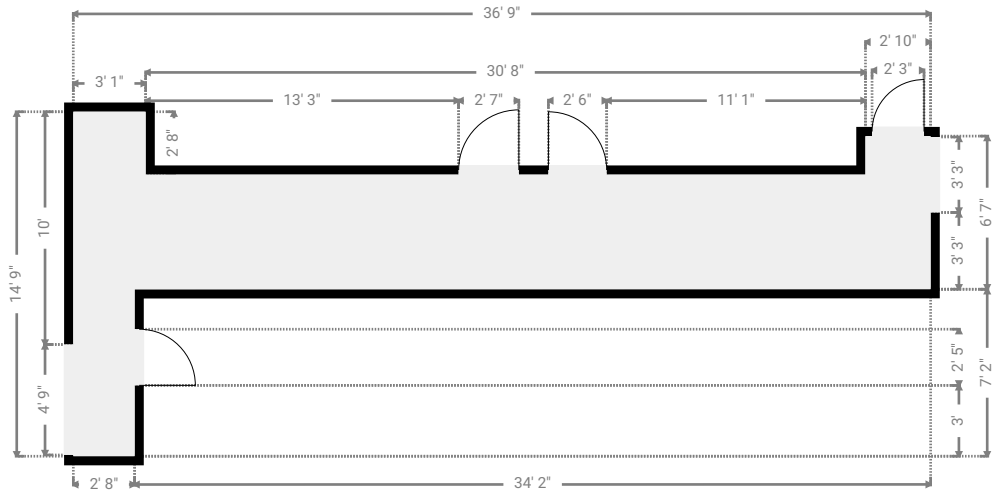
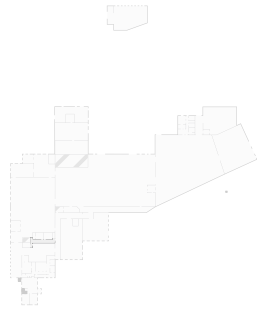
Building A

TOTAL AREA: 69728.96 sq ft • LIVING AREA: 69728.96 sq ft • FLOORS: 3 • ROOMS: 107



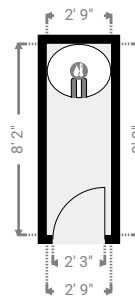
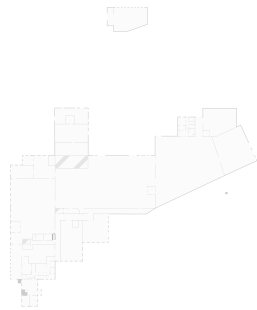
▼ Hall 1st Floor

WIDTH: 36' 9" • LENGTH: 14' 9" • CEILING HEIGHT: 12' 1"
AREA: 212.71 sq ft • PERIMETER: 106' 5"

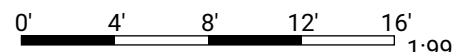


▼ Closet 1st Floor

WIDTH: 2' 9" • LENGTH: 8' 2" • CEILING HEIGHT: 11' 10"
AREA: 22.53 sq ft • PERIMETER: 21' 11"



THIS FLOORPLAN IS PROVIDED WITHOUT WARRANTY OF ANY KIND. SENSOPIA DISCLAIMS ANY WARRANTY INCLUDING, WITHOUT LIMITATION, SATISFACTORY QUALITY OR ACCURACY OF DIMENSIONS.



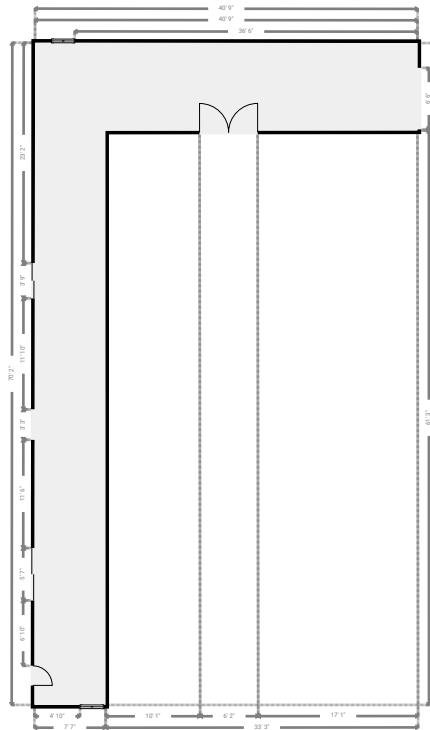
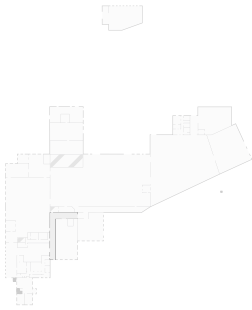
Building A

TOTAL AREA: 69728.96 sq ft • LIVING AREA: 69728.96 sq ft • FLOORS: 3 • ROOMS: 107



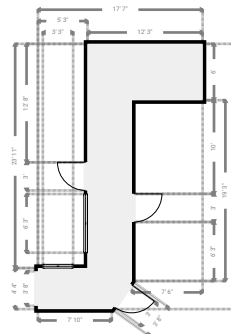
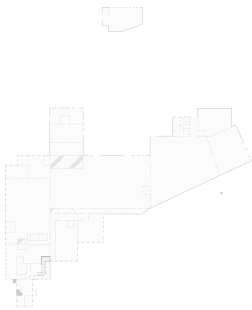
▼ Hall 1st Floor

WIDTH: 40' 9" • LENGTH: 70' 7" • CEILING HEIGHT: 10' 6"
AREA: 842.12 sq ft • PERIMETER: 222' 9"



▼ Hall 1st Floor

WIDTH: 17' 7" • LENGTH: 28' 3" • CEILING HEIGHT: 8'
AREA: 199.20 sq ft • PERIMETER: 90' 3"



THIS FLOORPLAN IS PROVIDED WITHOUT WARRANTY OF ANY KIND. SENSOPIA DISCLAIMS ANY WARRANTY INCLUDING, WITHOUT LIMITATION, SATISFACTORY QUALITY OR ACCURACY OF DIMENSIONS.



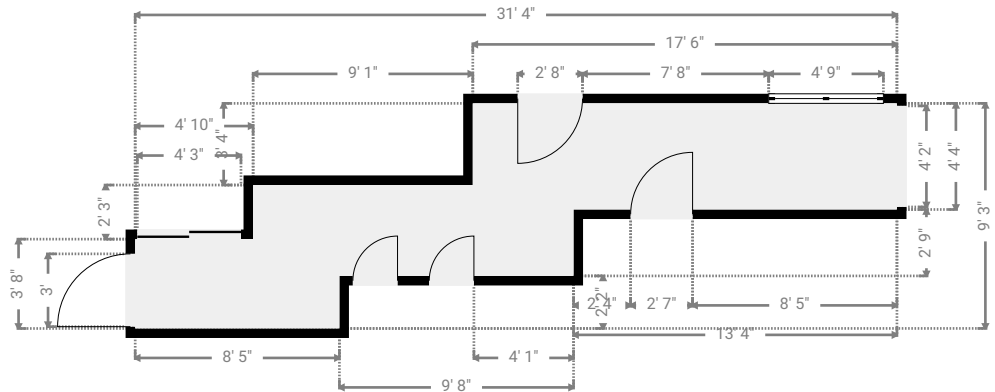
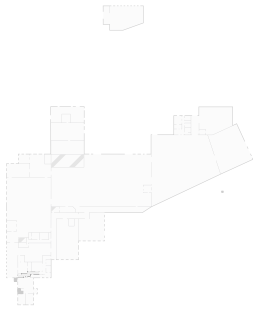
Building A

TOTAL AREA: 69728.96 sq ft • LIVING AREA: 69728.96 sq ft • FLOORS: 3 • ROOMS: 107



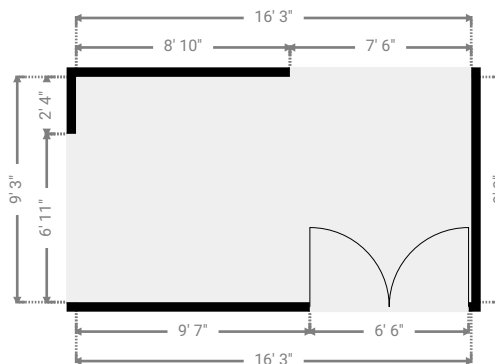
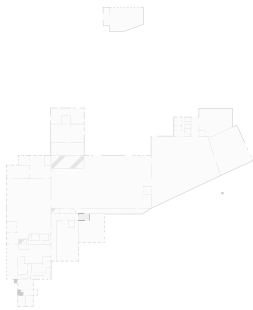
▼ Hall 1st Floor

WIDTH: 31' 4" • LENGTH: 9' 3" • CEILING HEIGHT: 8'
AREA: 147.06 sq ft • PERIMETER: 81' 3"

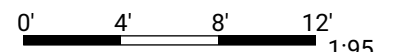


▼ Hall 1st Floor

WIDTH: 16' 3" • LENGTH: 9' 3" • CEILING HEIGHT: 10' 2"
AREA: 150.79 sq ft • PERIMETER: 51' 1"



THIS FLOORPLAN IS PROVIDED WITHOUT WARRANTY OF ANY KIND. SENSOPIA DISCLAIMS ANY WARRANTY INCLUDING, WITHOUT LIMITATION, SATISFACTORY QUALITY OR ACCURACY OF DIMENSIONS.



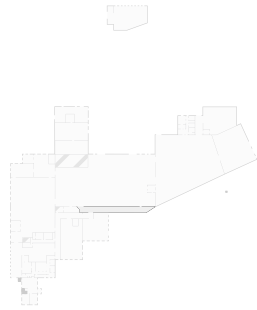
Building A

TOTAL AREA: 69728.96 sq ft • LIVING AREA: 69728.96 sq ft • FLOORS: 3 • ROOMS: 107



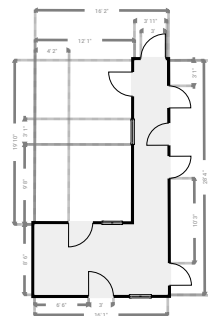
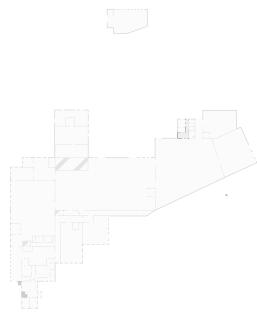
▼ Hall 1st Floor

WIDTH: 116' 8" • LENGTH: 8' 3" • CEILING HEIGHT: 11' 10"
AREA: 882.54 sq ft • PERIMETER: 241' 9"



▼ Hall 1st Floor

WIDTH: 16' 2" • LENGTH: 28' 5" • CEILING HEIGHT: 7' 10"
AREA: 215.73 sq ft • PERIMETER: 88' 10"



THIS FLOORPLAN IS PROVIDED WITHOUT WARRANTY OF ANY KIND. SENSOPIA DISCLAIMS ANY WARRANTY INCLUDING, WITHOUT LIMITATION, SATISFACTORY QUALITY OR ACCURACY OF DIMENSIONS.

0' 8' 16' 24' 32' 40' 1:279

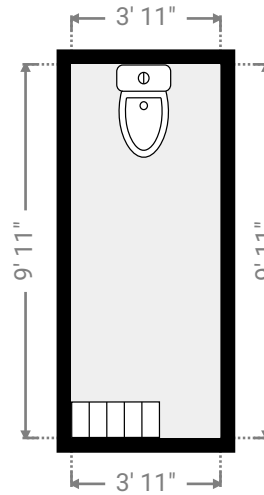
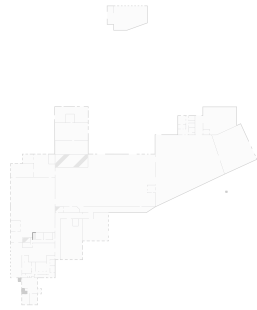
Building A

TOTAL AREA: 69728.96 sq ft • LIVING AREA: 69728.96 sq ft • FLOORS: 3 • ROOMS: 107



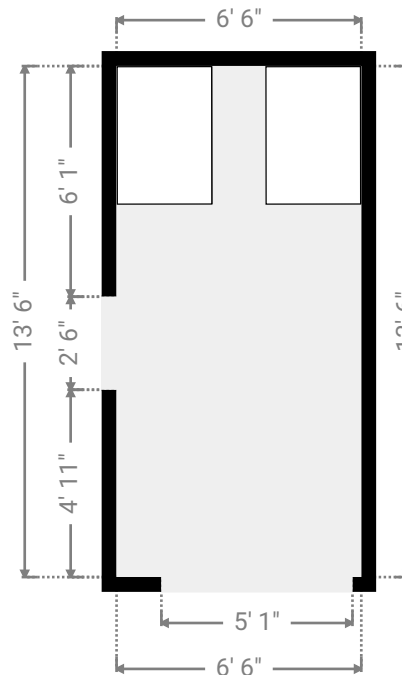
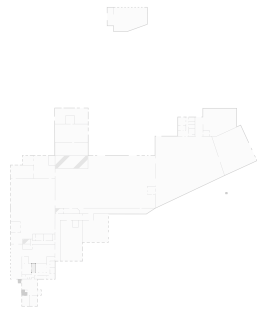
▼ Other 1st Floor

WIDTH: 3' 11" • LENGTH: 9' 11" • CEILING HEIGHT: 7' 6"
AREA: 38.91 sq ft • PERIMETER: 27' 8"



▼ Photocopy Room 1st Floor

WIDTH: 6' 6" • LENGTH: 13' 6" • CEILING HEIGHT: 8'
AREA: 87.42 sq ft • PERIMETER: 40'



THIS FLOORPLAN IS PROVIDED WITHOUT WARRANTY OF ANY KIND. SENSOPIA DISCLAIMS ANY WARRANTY INCLUDING, WITHOUT LIMITATION, SATISFACTORY QUALITY OR ACCURACY OF DIMENSIONS.



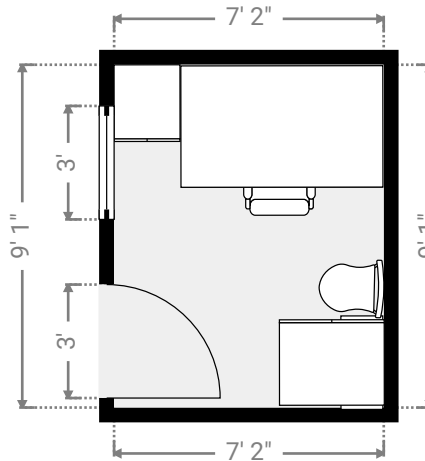
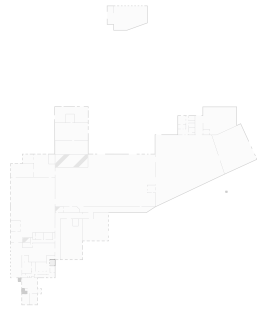
Building A

TOTAL AREA: 69728.96 sq ft • LIVING AREA: 69728.96 sq ft • FLOORS: 3 • ROOMS: 107



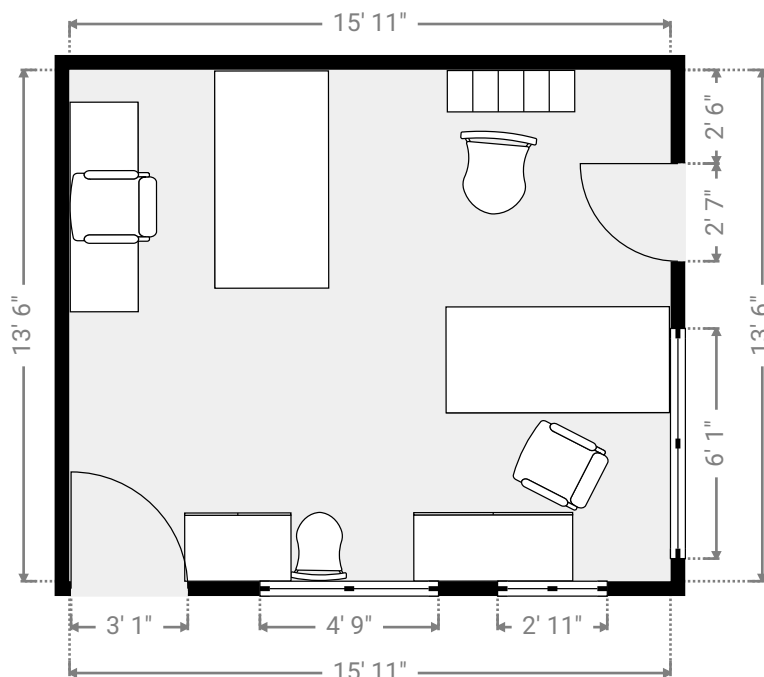
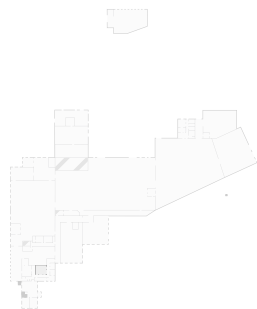
▼ Private Office 1st Floor

WIDTH: 7' 2" • LENGTH: 9' 1" • CEILING HEIGHT: 8'
AREA: 64.61 sq ft • PERIMETER: 32' 5"

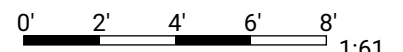


▼ Private Office 1st Floor

WIDTH: 15' 11" • LENGTH: 13' 6" • CEILING HEIGHT: 7' 10"
AREA: 214.76 sq ft • PERIMETER: 58' 10"



THIS FLOORPLAN IS PROVIDED WITHOUT WARRANTY OF ANY KIND. SENSOPIA DISCLAIMS ANY WARRANTY INCLUDING, WITHOUT LIMITATION, SATISFACTORY QUALITY OR ACCURACY OF DIMENSIONS.



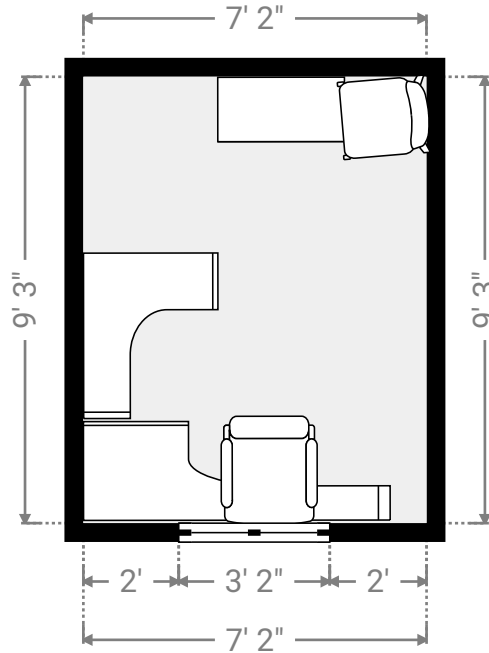
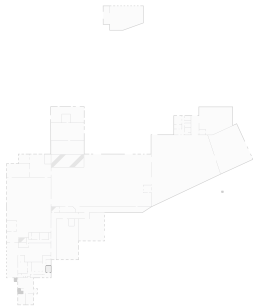
Building A

TOTAL AREA: 69728.96 sq ft • LIVING AREA: 69728.96 sq ft • FLOORS: 3 • ROOMS: 107



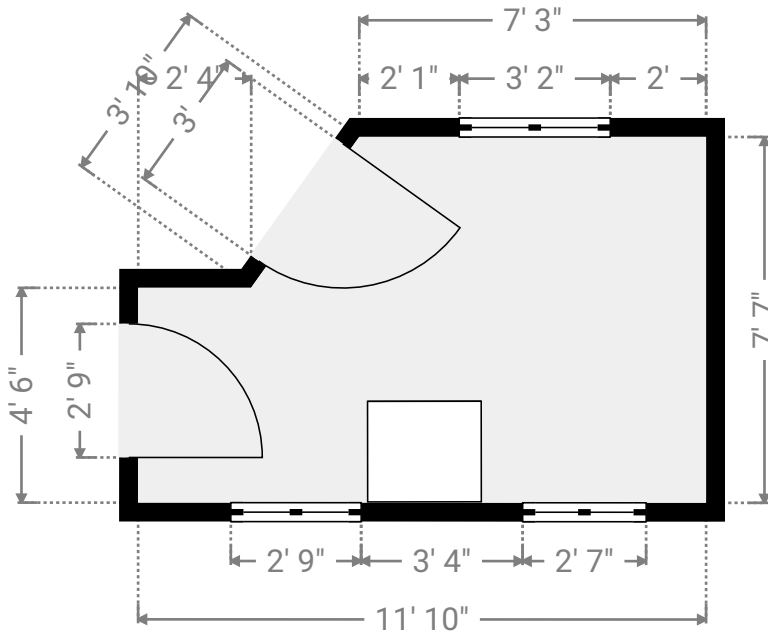
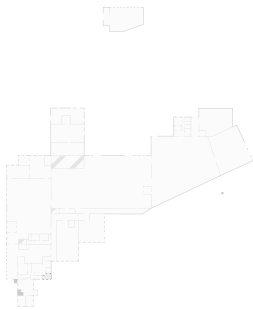
▼ Private Office 1st Floor

WIDTH: 7' 2" • LENGTH: 9' 3" • CEILING HEIGHT: 7' 11"
AREA: 66.29 sq ft • PERIMETER: 32' 10"



▼ Private Office 1st Floor

WIDTH: 11' 10" • LENGTH: 7' 7" • CEILING HEIGHT: 7' 11"
AREA: 78.99 sq ft • PERIMETER: 37' 4"



THIS FLOORPLAN IS PROVIDED WITHOUT WARRANTY OF ANY KIND. SENSOPIA DISCLAIMS ANY WARRANTY INCLUDING, WITHOUT LIMITATION, SATISFACTORY QUALITY OR ACCURACY OF DIMENSIONS.



1:48

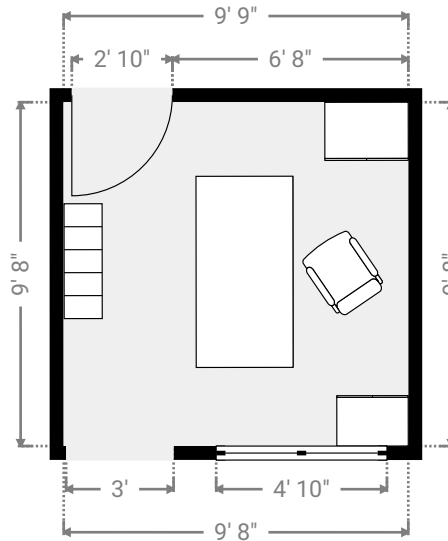
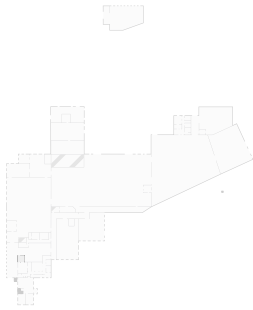
Building A

TOTAL AREA: 69728.96 sq ft • LIVING AREA: 69728.96 sq ft • FLOORS: 3 • ROOMS: 107



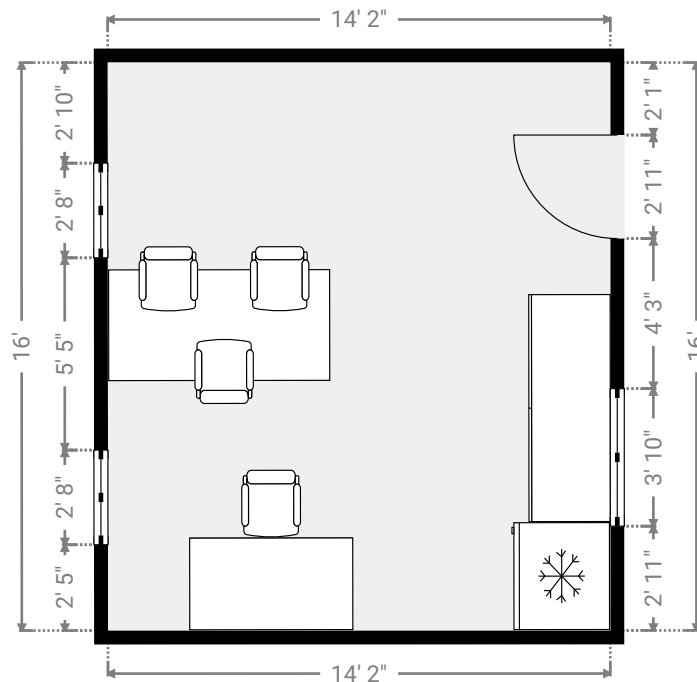
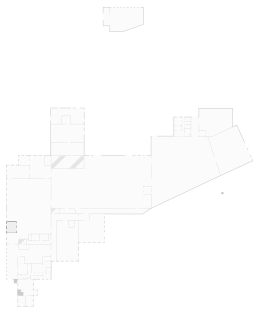
▼ Private Office 1st Floor

WIDTH: 9' 9" • LENGTH: 9' 8" • CEILING HEIGHT: 7' 8"
AREA: 94.05 sq ft • PERIMETER: 38' 10"

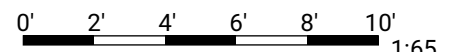


▼ Private Office 1st Floor

WIDTH: 14' 2" • LENGTH: 16' • CEILING HEIGHT: 7' 1"
AREA: 226.46 sq ft • PERIMETER: 60' 4"



THIS FLOORPLAN IS PROVIDED WITHOUT WARRANTY OF ANY KIND. SENSOPIA DISCLAIMS ANY WARRANTY INCLUDING, WITHOUT LIMITATION, SATISFACTORY QUALITY OR ACCURACY OF DIMENSIONS.



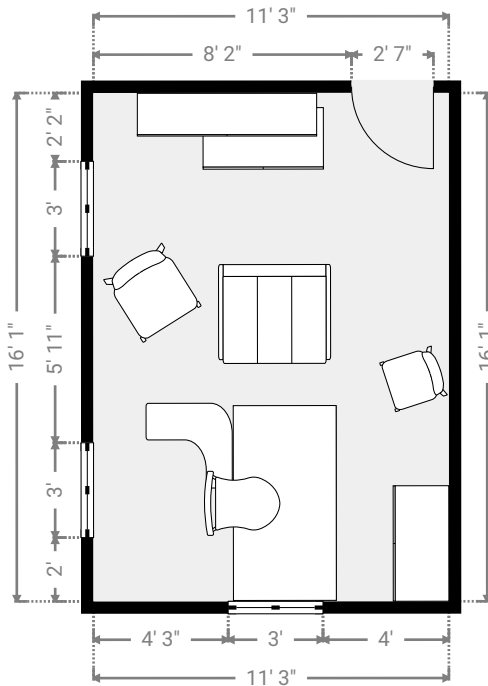
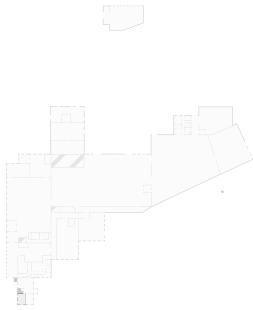
Building A

TOTAL AREA: 69728.96 sq ft • LIVING AREA: 69728.96 sq ft • FLOORS: 3 • ROOMS: 107



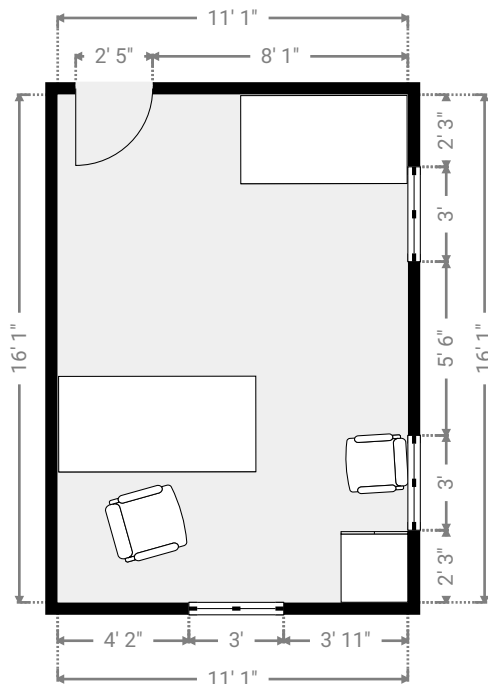
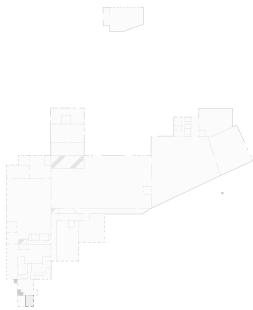
▼ Private Office 1st Floor

WIDTH: 11' 3" • LENGTH: 16' 1" • CEILING HEIGHT: 8' 4"
AREA: 180.81 sq ft • PERIMETER: 54' 8"

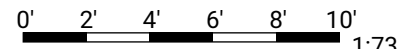


▼ Private Office 1st Floor

WIDTH: 11' 1" • LENGTH: 16' 1" • CEILING HEIGHT: 8' 4"
AREA: 177.94 sq ft • PERIMETER: 54' 3"



THIS FLOORPLAN IS PROVIDED WITHOUT WARRANTY OF ANY KIND. SENSOPIA DISCLAIMS ANY WARRANTY INCLUDING, WITHOUT LIMITATION, SATISFACTORY QUALITY OR ACCURACY OF DIMENSIONS.



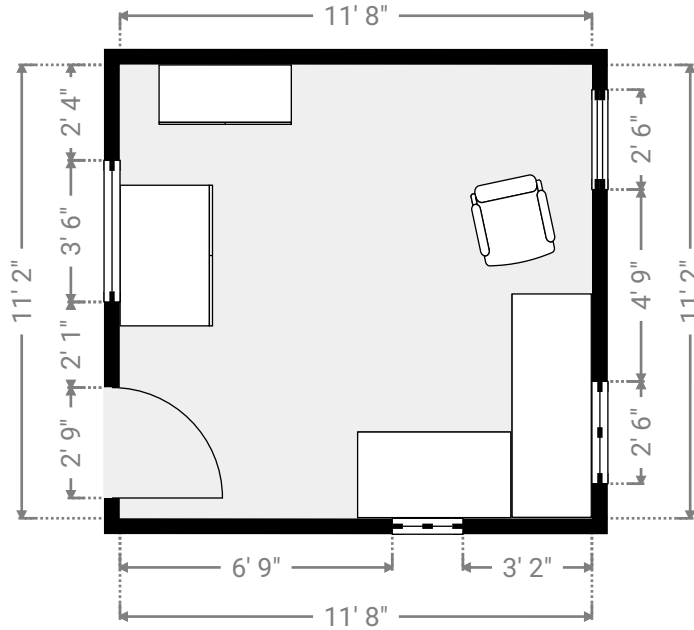
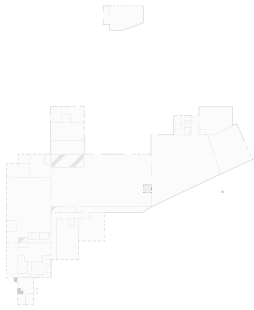
Building A

TOTAL AREA: 69728.96 sq ft • LIVING AREA: 69728.96 sq ft • FLOORS: 3 • ROOMS: 107



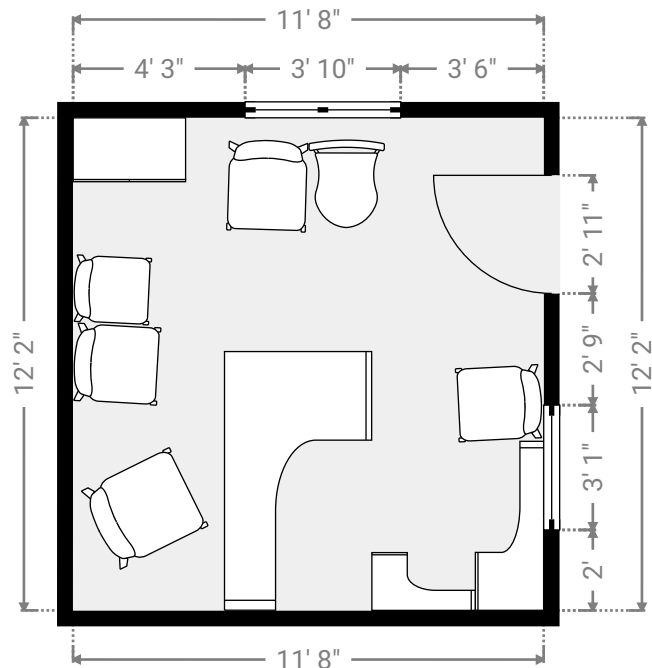
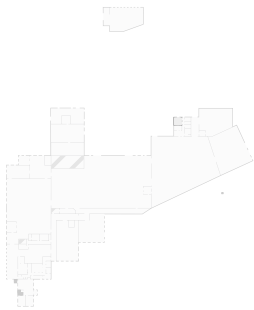
▼ Private Office 1st Floor

WIDTH: 11' 8" • LENGTH: 11' 2" • CEILING HEIGHT: 8'
AREA: 130.59 sq ft • PERIMETER: 45' 9"



▼ Private Office 1st Floor

WIDTH: 11' 8" • LENGTH: 12' 2" • CEILING HEIGHT: 7' 10"
AREA: 141.49 sq ft • PERIMETER: 47' 7"



THIS FLOORPLAN IS PROVIDED WITHOUT WARRANTY OF ANY KIND. SENSOPIA DISCLAIMS ANY WARRANTY INCLUDING, WITHOUT LIMITATION, SATISFACTORY QUALITY OR ACCURACY OF DIMENSIONS.



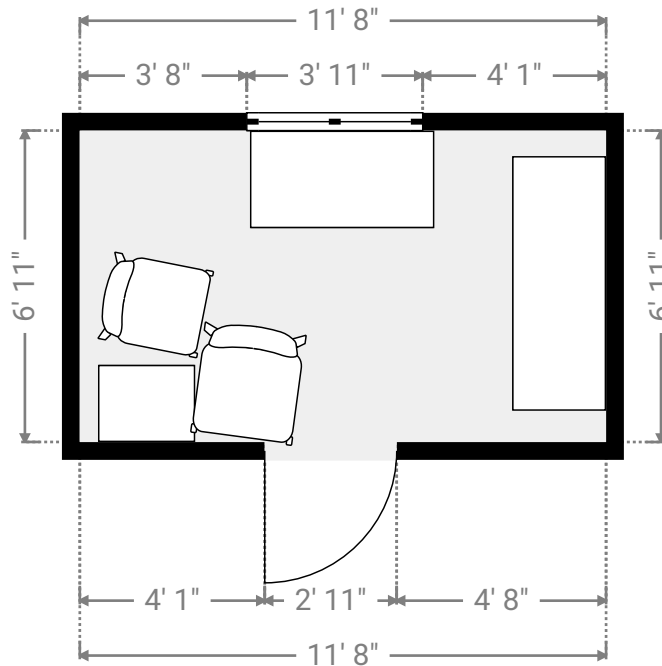
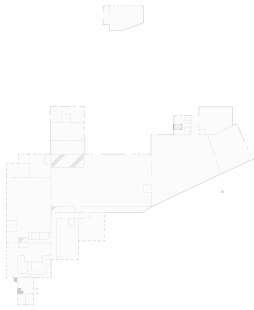
Building A

TOTAL AREA: 69728.96 sq ft • LIVING AREA: 69728.96 sq ft • FLOORS: 3 • ROOMS: 107



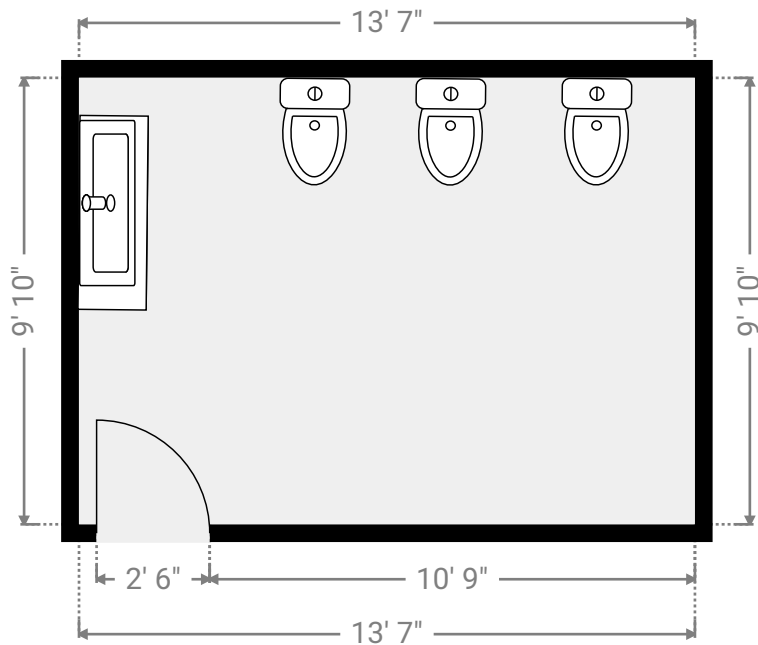
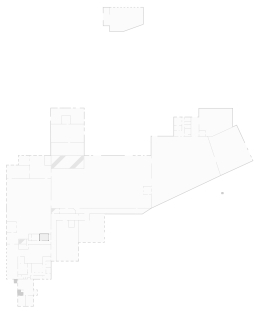
▼ Private Office 1st Floor

WIDTH: 11' 8" • LENGTH: 6' 11" • CEILING HEIGHT: 7' 10"
AREA: 80.07 sq ft • PERIMETER: 37'

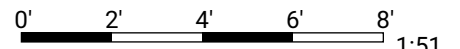


▼ Restrooms 1st Floor

WIDTH: 13' 7" • LENGTH: 9' 10" • CEILING HEIGHT: 7' 4"
AREA: 134.35 sq ft • PERIMETER: 47'



THIS FLOORPLAN IS PROVIDED WITHOUT WARRANTY OF ANY KIND. SENSOPIA DISCLAIMS ANY WARRANTY INCLUDING, WITHOUT LIMITATION, SATISFACTORY QUALITY OR ACCURACY OF DIMENSIONS.



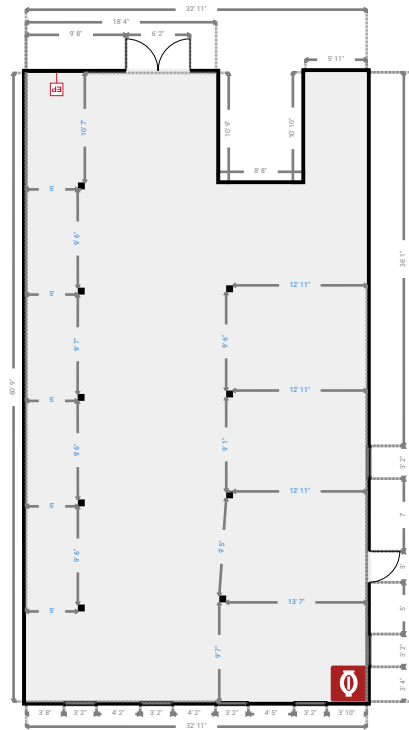
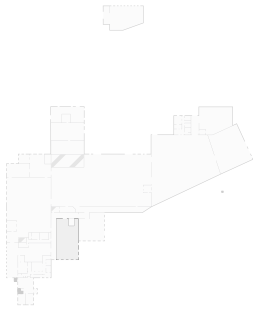
Building A

TOTAL AREA: 69728.96 sq ft • LIVING AREA: 69728.96 sq ft • FLOORS: 3 • ROOMS: 107



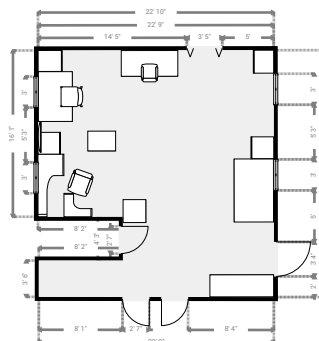
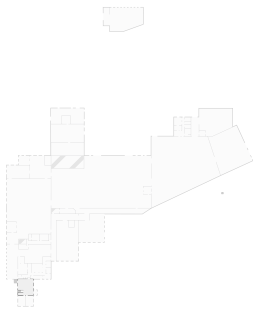
▼ Shared Office 1st Floor

WIDTH: 32' 11" • LENGTH: 60' 10" • CEILING HEIGHT: 10' 6"
AREA: 1907.39 sq ft • PERIMETER: 209'



▼ Shared Office 1st Floor

WIDTH: 22' 10" • LENGTH: 23' 10" • CEILING HEIGHT: 13' 9"
AREA: 508.11 sq ft • PERIMETER: 109' 6"



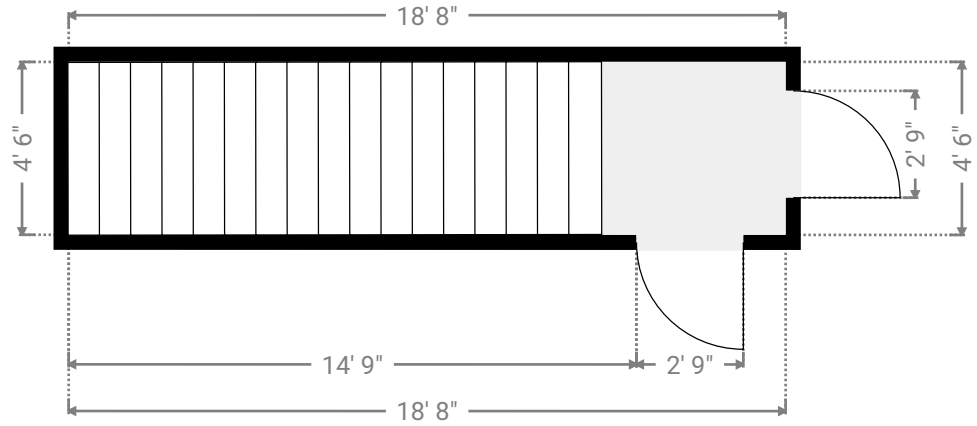
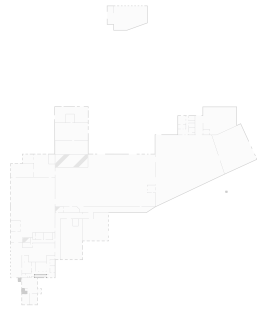
Building A

TOTAL AREA: 69728.96 sq ft • LIVING AREA: 69728.96 sq ft • FLOORS: 3 • ROOMS: 107



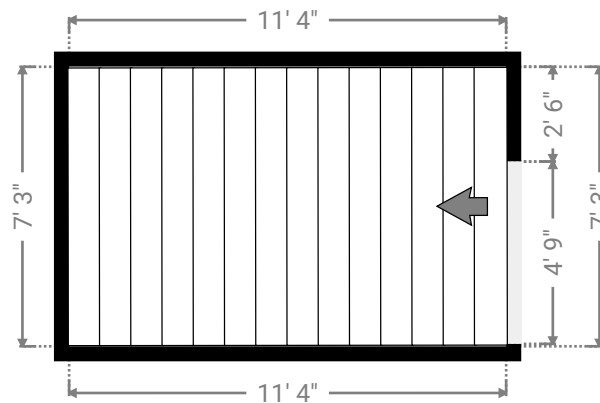
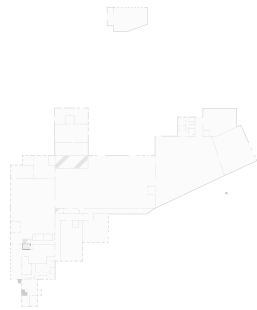
▼ Stairway 1st Floor

WIDTH: 18' 8" • LENGTH: 4' 6" • CEILING HEIGHT: 11' 10"
AREA: 83.85 sq ft • PERIMETER: 46' 3"



▼ Stairway 1st Floor

WIDTH: 11' 4" • LENGTH: 7' 3" • CEILING HEIGHT: 11' 10"
AREA: 82.61 sq ft • PERIMETER: 37' 3"



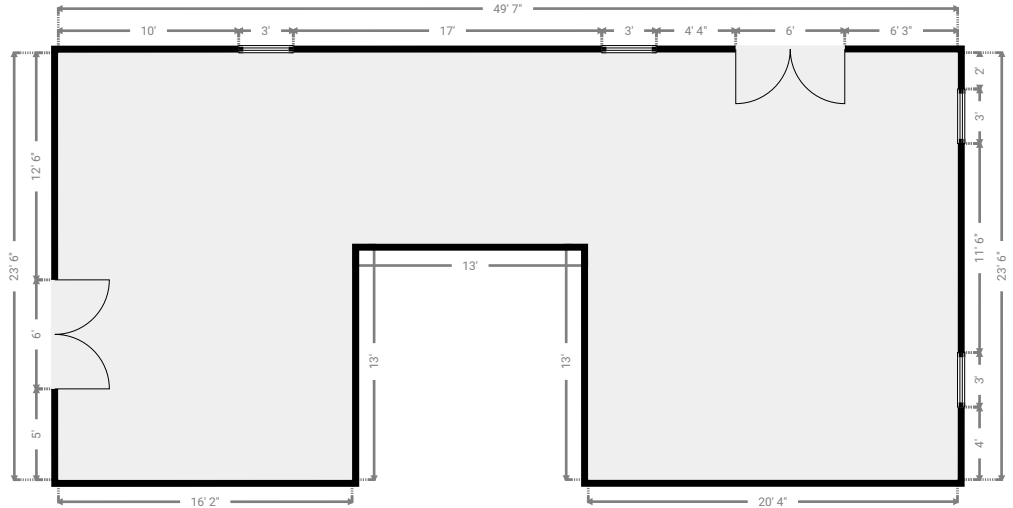
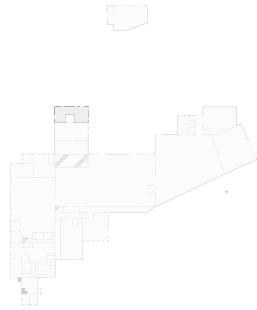
Building A

TOTAL AREA: 69728.96 sq ft • LIVING AREA: 69728.96 sq ft • FLOORS: 3 • ROOMS: 107



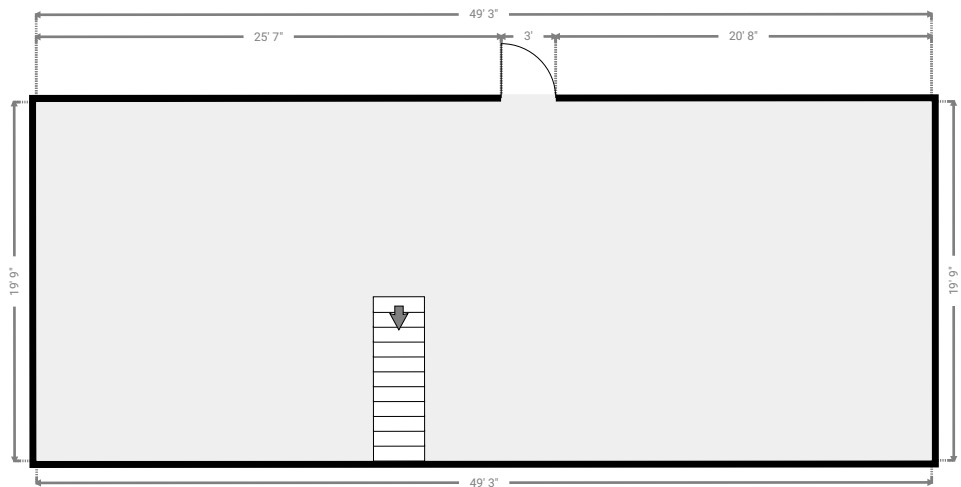
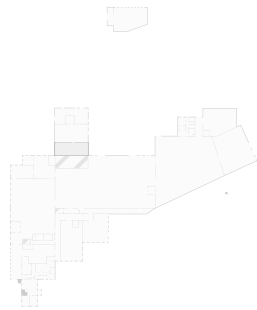
▼ Storage 1st Floor

WIDTH: 49' 6" • LENGTH: 23' 6" • CEILING HEIGHT: 24' 6"
AREA: 994.06 sq ft • PERIMETER: 172'

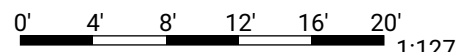


▼ Storage 1st Floor

WIDTH: 49' 3" • LENGTH: 19' 9" • CEILING HEIGHT: 9' 9"
AREA: 973.27 sq ft • PERIMETER: 138' 1"



THIS FLOORPLAN IS PROVIDED WITHOUT WARRANTY OF ANY KIND. SENSOPIA DISCLAIMS ANY WARRANTY INCLUDING, WITHOUT LIMITATION, SATISFACTORY QUALITY OR ACCURACY OF DIMENSIONS.



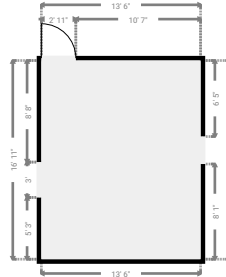
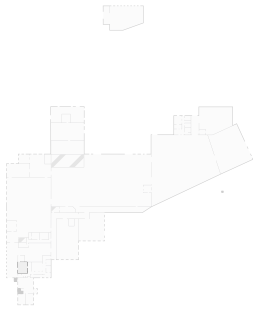
Building A

TOTAL AREA: 69728.96 sq ft • LIVING AREA: 69728.96 sq ft • FLOORS: 3 • ROOMS: 107



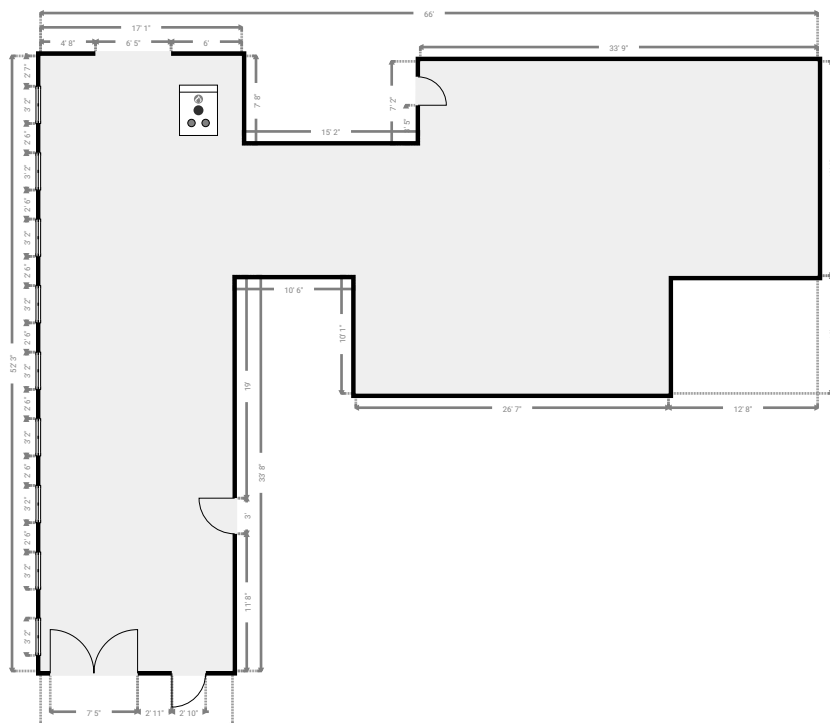
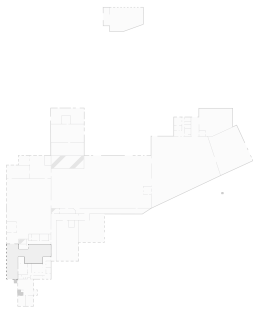
▼ Storage 1st Floor

WIDTH: 13' 6" • LENGTH: 16' 11" • CEILING HEIGHT: 8' 7"
AREA: 228.24 sq ft • PERIMETER: 60' 10"



▼ Storage 1st Floor

WIDTH: 66' • LENGTH: 52' 3" • CEILING HEIGHT: 11' 10"
AREA: 1912.60 sq ft • PERIMETER: 271'



THIS FLOORPLAN IS PROVIDED WITHOUT WARRANTY OF ANY KIND. SENSOPIA DISCLAIMS ANY WARRANTY INCLUDING, WITHOUT LIMITATION, SATISFACTORY QUALITY OR ACCURACY OF DIMENSIONS.

0' 8' 16' 24'

1:196
Page 25/58

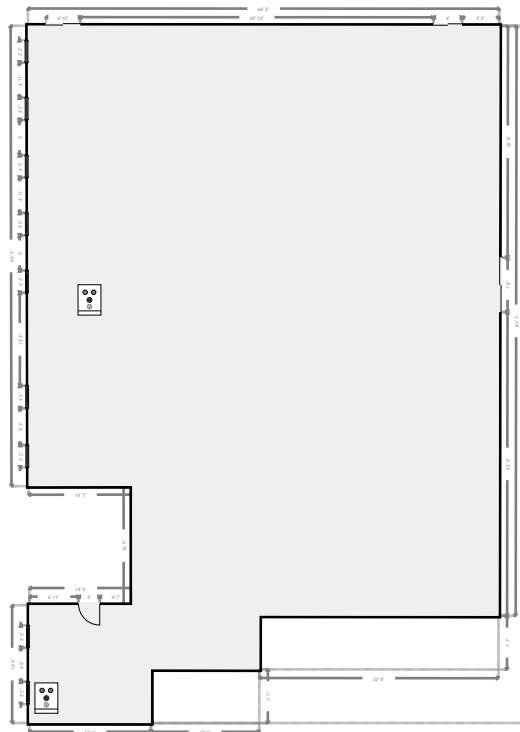
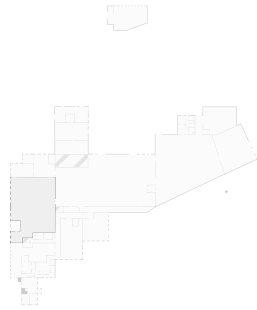
Building A

TOTAL AREA: 69728.96 sq ft • LIVING AREA: 69728.96 sq ft • FLOORS: 3 • ROOMS: 107



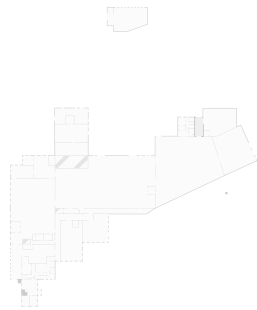
▼ Storage 1st Floor

WIDTH: 66' 5" • LENGTH: 98' 3" • CEILING HEIGHT: 9' 10"
AREA: 5635.93 sq ft • PERIMETER: 358' 1"



▼ Storage 1st Floor

WIDTH: 11' 8" • LENGTH: 28' 5" • CEILING HEIGHT: 11' 7"
AREA: 331.41 sq ft • PERIMETER: 80' 2"



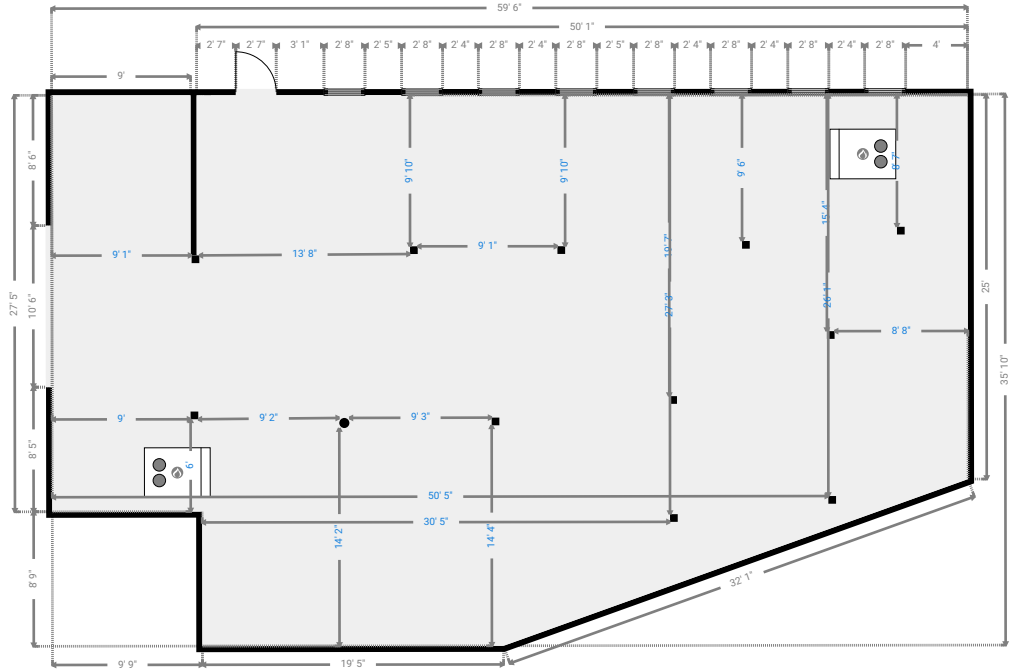
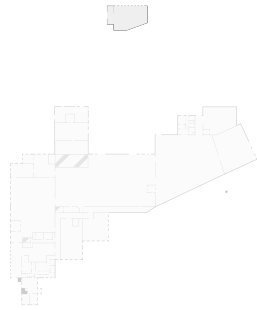
Building A

TOTAL AREA: 69728.96 sq ft • LIVING AREA: 69728.96 sq ft • FLOORS: 3 • ROOMS: 107



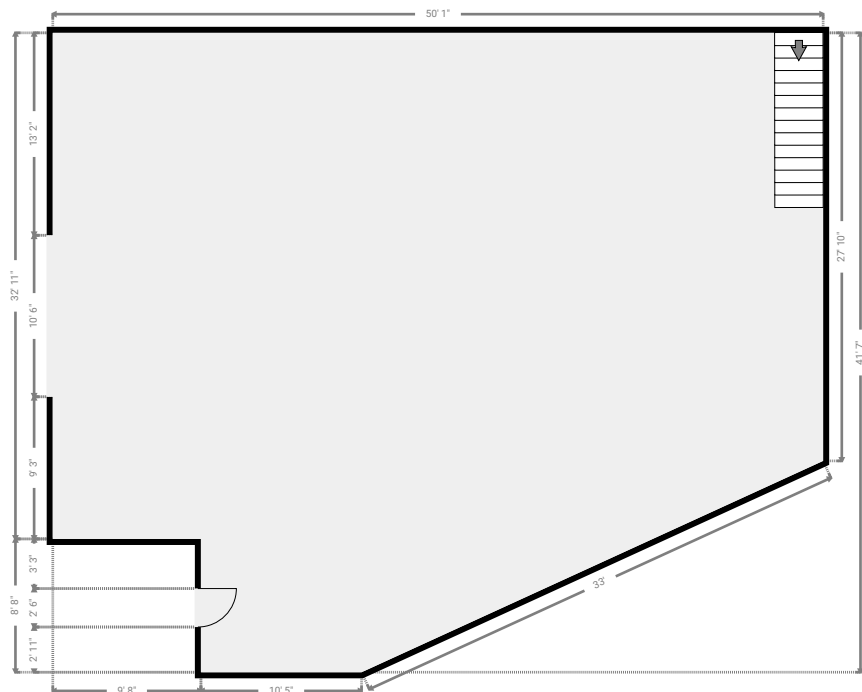
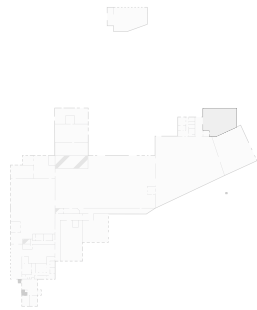
▼ Storage 1st Floor

WIDTH: 59' 6" • LENGTH: 35' 10" • CEILING HEIGHT: 11' 10"
AREA: 1879.15 sq ft • PERIMETER: 202' 7"

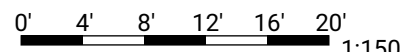


▼ Storage 1st Floor

WIDTH: 50' 1" • LENGTH: 41' 7" • CEILING HEIGHT: 11' 10"
AREA: 1792.08 sq ft • PERIMETER: 172' 7"



THIS FLOORPLAN IS PROVIDED WITHOUT WARRANTY OF ANY KIND. SENSOPIA DISCLAIMS ANY WARRANTY INCLUDING, WITHOUT LIMITATION, SATISFACTORY QUALITY OR ACCURACY OF DIMENSIONS.



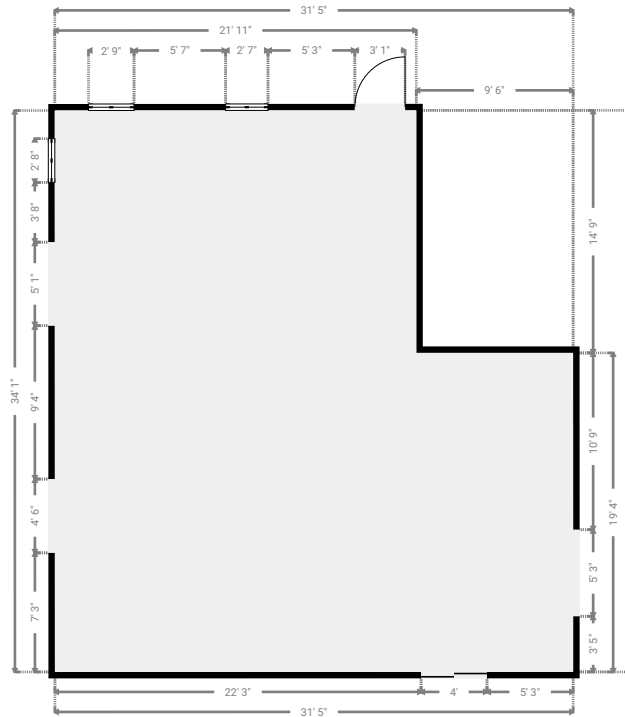
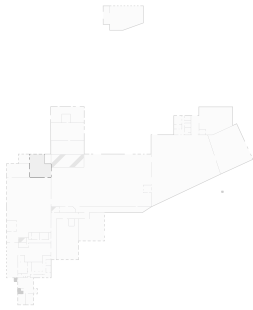
Building A

TOTAL AREA: 69728.96 sq ft • LIVING AREA: 69728.96 sq ft • FLOORS: 3 • ROOMS: 107



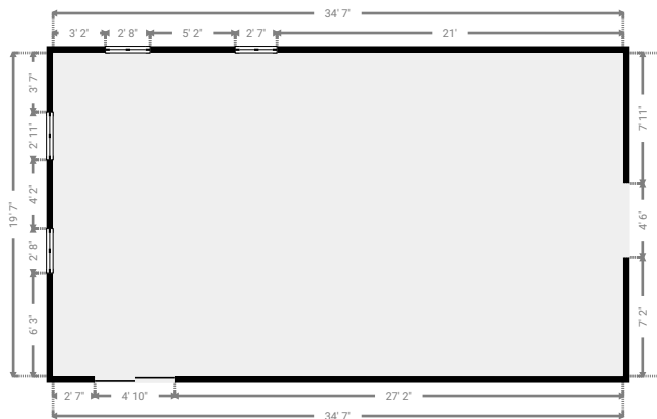
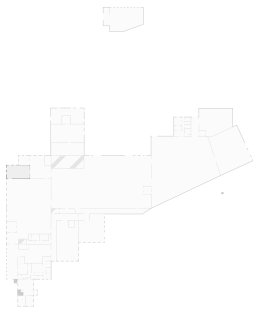
▼ Storage 1st Floor

WIDTH: 31' 5" • LENGTH: 34' 1" • CEILING HEIGHT: 11' 7"
AREA: 931.34 sq ft • PERIMETER: 131'

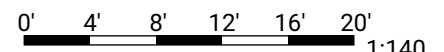


▼ Storage 1st Floor

WIDTH: 34' 7" • LENGTH: 19' 7" • CEILING HEIGHT: 10' 10"
AREA: 677.43 sq ft • PERIMETER: 108' 4"



THIS FLOORPLAN IS PROVIDED WITHOUT WARRANTY OF ANY KIND. SENSOPIA DISCLAIMS ANY WARRANTY INCLUDING, WITHOUT LIMITATION, SATISFACTORY QUALITY OR ACCURACY OF DIMENSIONS.



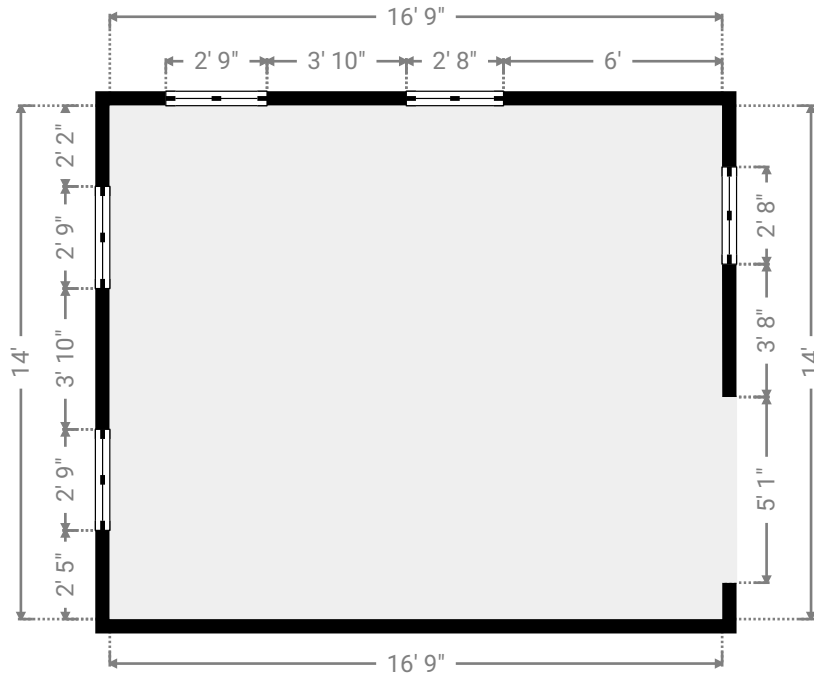
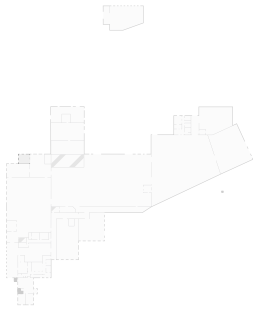
Building A

TOTAL AREA: 69728.96 sq ft • LIVING AREA: 69728.96 sq ft • FLOORS: 3 • ROOMS: 107



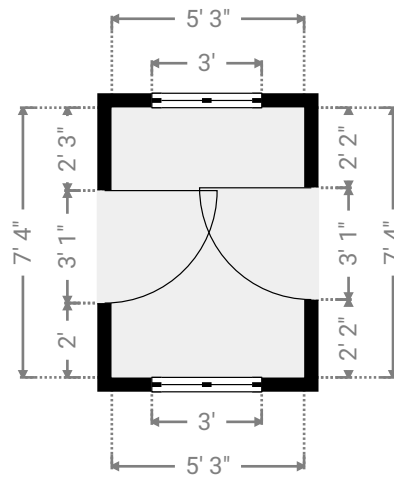
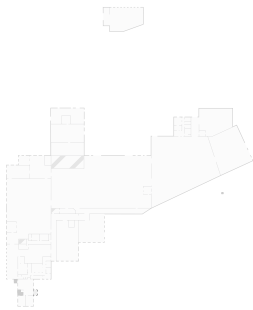
▼ Storage 1st Floor

WIDTH: 16' 9" • LENGTH: 14' • CEILING HEIGHT: 10' 3"
AREA: 234.39 sq ft • PERIMETER: 61' 6"

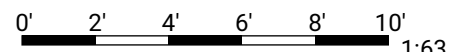


▼ Vestibule 1st Floor

WIDTH: 5' 3" • LENGTH: 7' 4" • CEILING HEIGHT: 9' 4"
AREA: 38.66 sq ft • PERIMETER: 25' 3"



THIS FLOORPLAN IS PROVIDED WITHOUT WARRANTY OF ANY KIND. SENSOPIA DISCLAIMS ANY WARRANTY INCLUDING, WITHOUT LIMITATION, SATISFACTORY QUALITY OR ACCURACY OF DIMENSIONS.



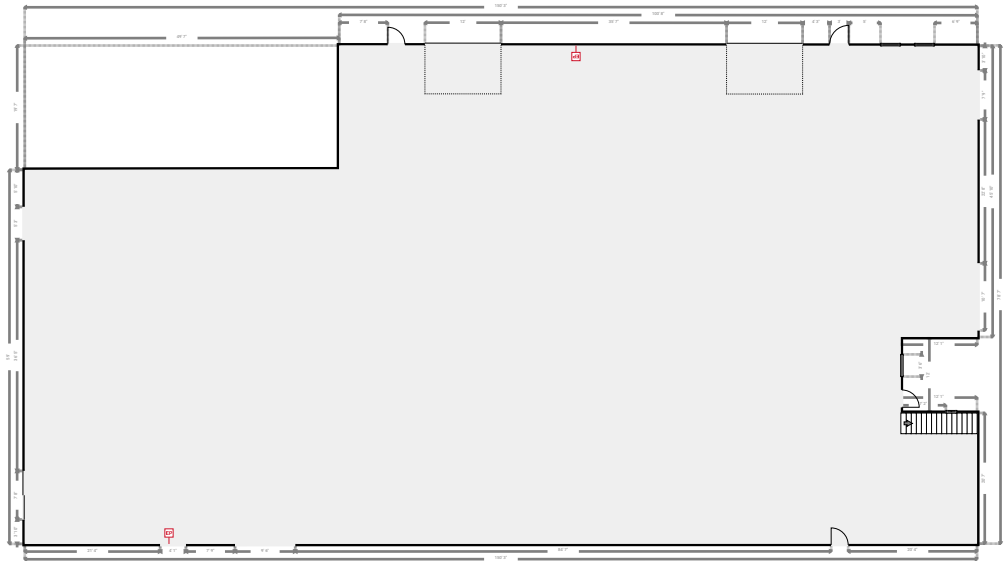
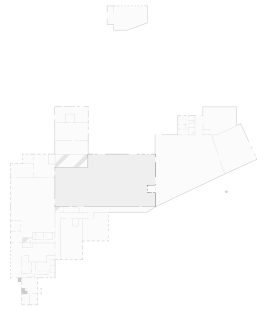
Building A

TOTAL AREA: 69728.96 sq ft • LIVING AREA: 69728.96 sq ft • FLOORS: 3 • ROOMS: 107



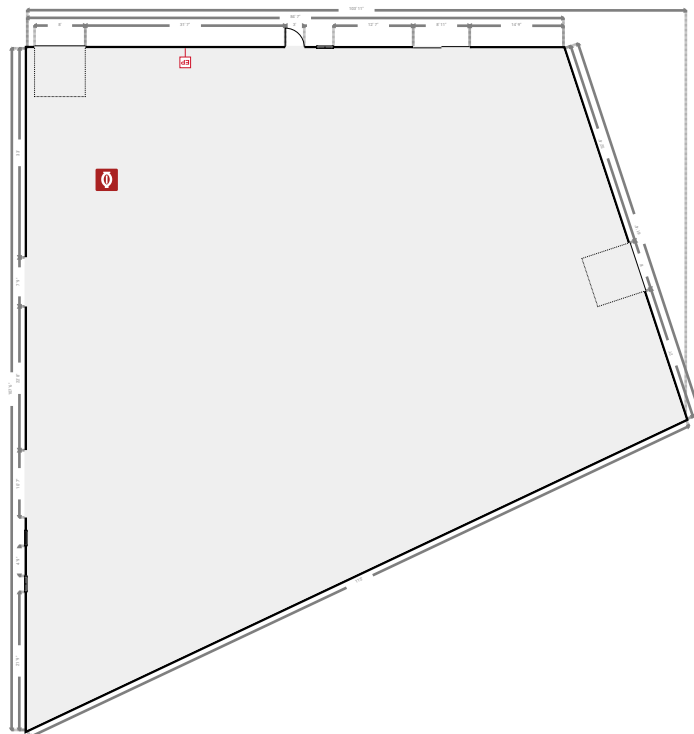
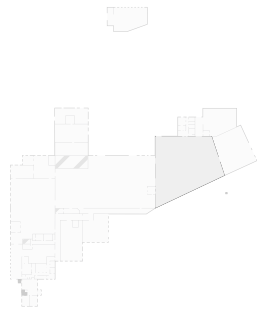
▼ Workshop 1st Floor

WIDTH: 150' 3" • LENGTH: 78' 7" • CEILING HEIGHT: 11' 10"
AREA: 10690.06 sq ft • PERIMETER: 481' 8"



▼ Workshop 1st Floor

WIDTH: 103' 11" • LENGTH: 107' 6" • CEILING HEIGHT: 11' 10"
AREA: 8058.88 sq ft • PERIMETER: 368' 7"



THIS FLOORPLAN IS PROVIDED WITHOUT WARRANTY OF ANY KIND. SENSOPIA DISCLAIMS ANY WARRANTY INCLUDING, WITHOUT LIMITATION, SATISFACTORY QUALITY OR ACCURACY OF DIMENSIONS.

0' 16' 32' 48' 1:364

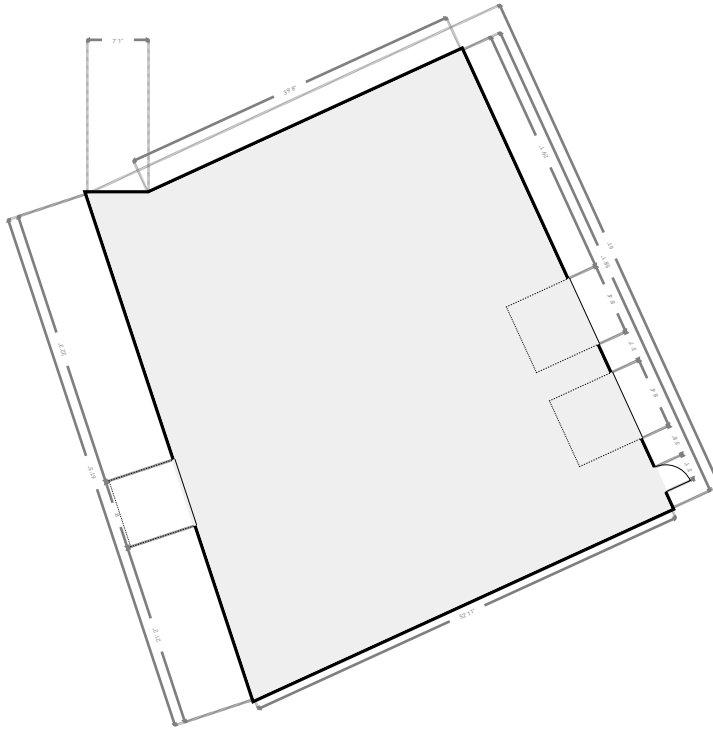
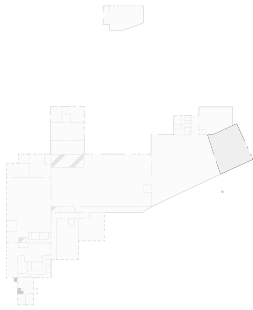
Building A

TOTAL AREA: 69728.96 sq ft • LIVING AREA: 69728.96 sq ft • FLOORS: 3 • ROOMS: 107



▼ Workshop 1st Floor

WIDTH: 52' 11" • LENGTH: 61' • CEILING HEIGHT: 11' 10"
AREA: 2893.46 sq ft • PERIMETER: 219' 1"



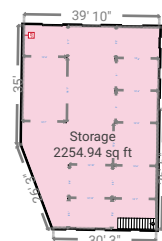
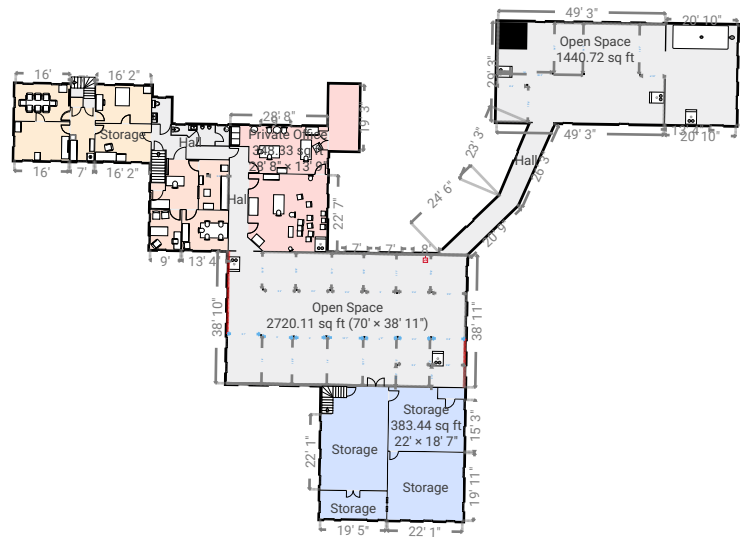
Building A

TOTAL AREA: 69728.96 sq ft • LIVING AREA: 69728.96 sq ft • FLOORS: 3 • ROOMS: 107

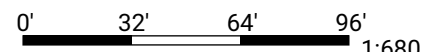


▼ 2nd Floor

TOTAL AREA: 12999.43 sq ft • LIVING AREA: 12999.43 sq ft • ROOMS: 34



THIS FLOORPLAN IS PROVIDED WITHOUT WARRANTY OF ANY KIND. SENSOPIA DISCLAIMS ANY WARRANTY INCLUDING, WITHOUT LIMITATION, SATISFACTORY QUALITY OR ACCURACY OF DIMENSIONS.



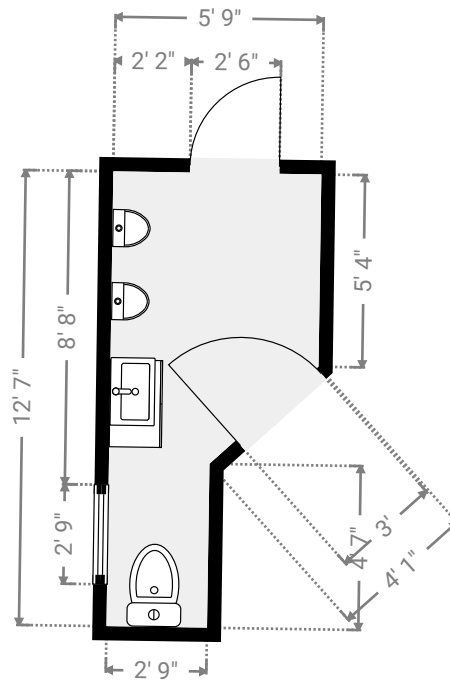
Building A

TOTAL AREA: 69728.96 sq ft • LIVING AREA: 69728.96 sq ft • FLOORS: 3 • ROOMS: 107



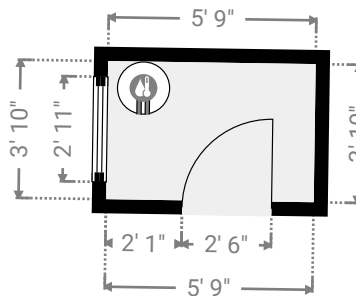
▼ Bathroom 2nd Floor

WIDTH: 5' 9" • LENGTH: 12' 7" • CEILING HEIGHT: 7' 3"
AREA: 55.19 sq ft • PERIMETER: 35' 1"



▼ Closet 2nd Floor

WIDTH: 5' 9" • LENGTH: 3' 10" • CEILING HEIGHT: 8' 7"
AREA: 22.07 sq ft • PERIMETER: 19' 2"



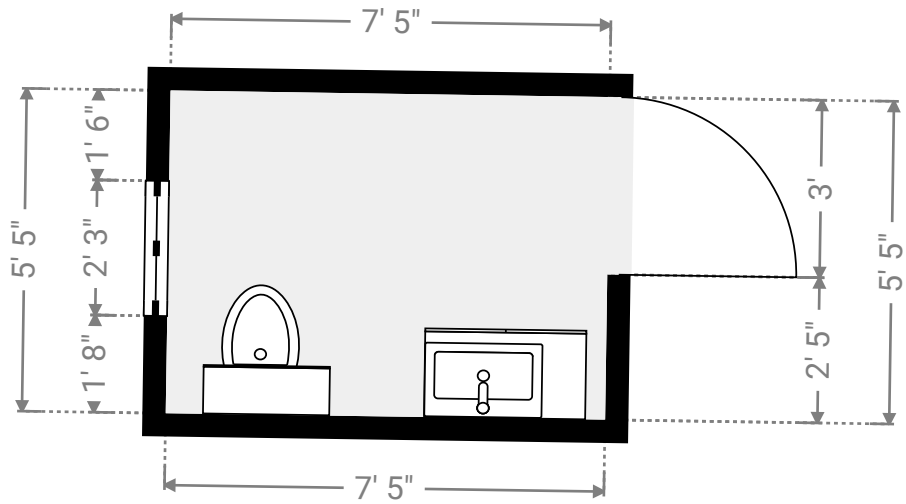
Building A

TOTAL AREA: 69728.96 sq ft • LIVING AREA: 69728.96 sq ft • FLOORS: 3 • ROOMS: 107



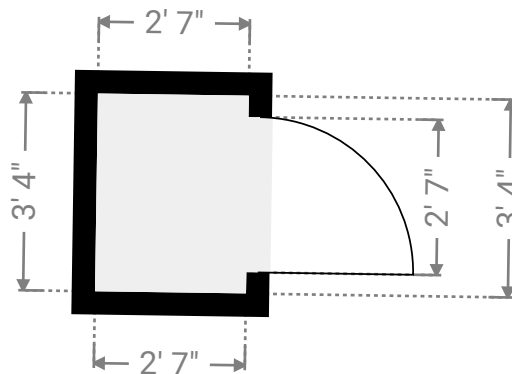
▼ Bathroom 2nd Floor

WIDTH: 7' 5" • LENGTH: 5' 5" • CEILING HEIGHT: 7' 1"
AREA: 40.53 sq ft • PERIMETER: 25' 9"



▼ Closet 2nd Floor

WIDTH: 2' 7" • LENGTH: 3' 4" • CEILING HEIGHT: 8' 11"
AREA: 8.53 sq ft • PERIMETER: 11' 9"



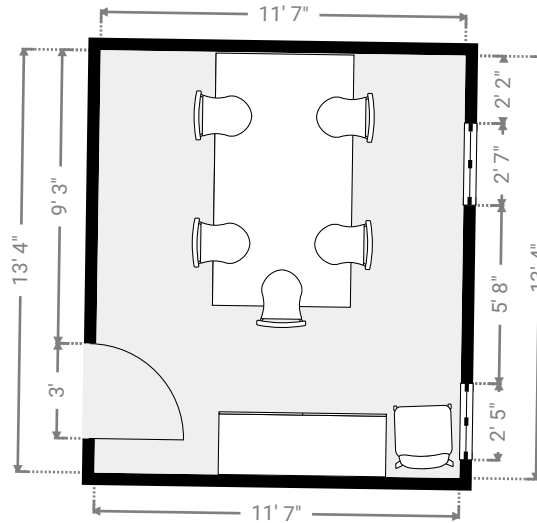
Building A

TOTAL AREA: 69728.96 sq ft • LIVING AREA: 69728.96 sq ft • FLOORS: 3 • ROOMS: 107



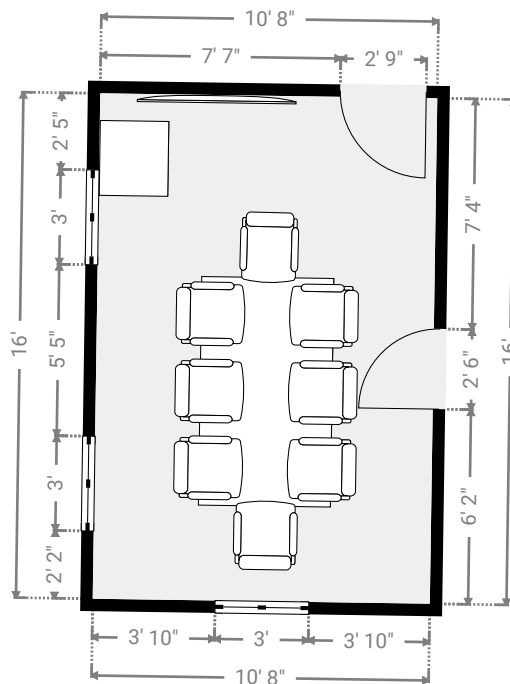
▼ Conference Room 2nd Floor

WIDTH: 11' 7" • LENGTH: 13' 4" • CEILING HEIGHT: 7' 7"
AREA: 154.32 sq ft • PERIMETER: 49' 10"

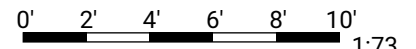


▼ Conference Room 2nd Floor

WIDTH: 10' 8" • LENGTH: 16' • CEILING HEIGHT: 8' 6"
AREA: 170.57 sq ft • PERIMETER: 53' 4"



THIS FLOORPLAN IS PROVIDED WITHOUT WARRANTY OF ANY KIND. SENSOPIA DISCLAIMS ANY WARRANTY INCLUDING, WITHOUT LIMITATION, SATISFACTORY QUALITY OR ACCURACY OF DIMENSIONS.



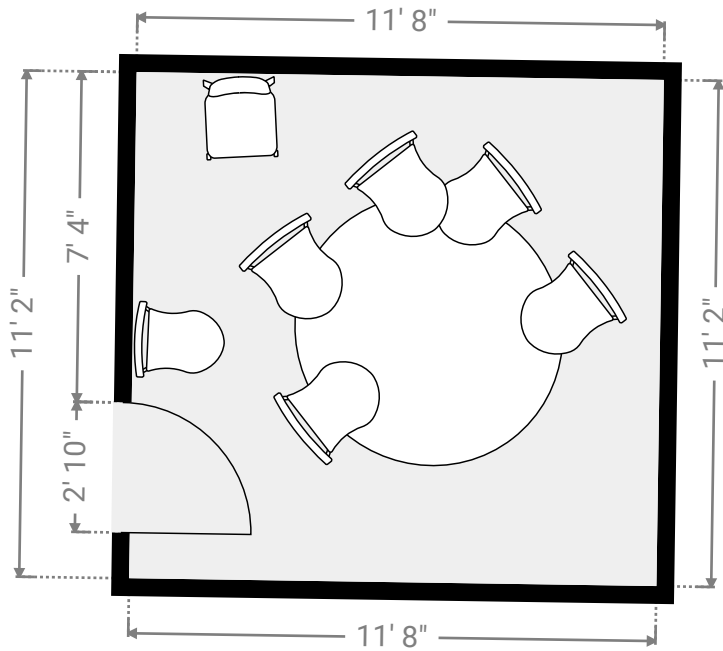
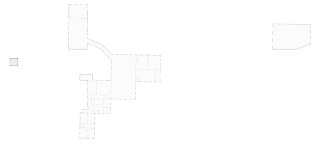
Building A

TOTAL AREA: 69728.96 sq ft • LIVING AREA: 69728.96 sq ft • FLOORS: 3 • ROOMS: 107



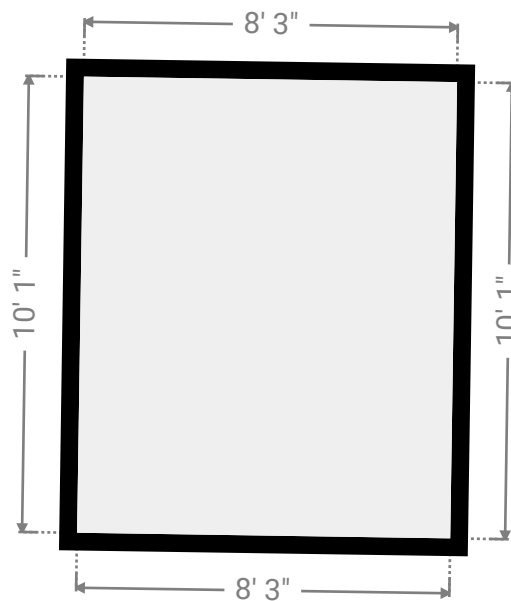
▼ Conference Room 2nd Floor

WIDTH: 11' 8" • LENGTH: 11' 2" • CEILING HEIGHT: 7' 10"
AREA: 130.42 sq ft • PERIMETER: 45' 8"

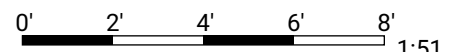


▼ Elevators 2nd Floor

WIDTH: 8' 3" • LENGTH: 10' 1" • CEILING HEIGHT: 10' 11"
AREA: 83.19 sq ft • PERIMETER: 36' 8"



THIS FLOORPLAN IS PROVIDED WITHOUT WARRANTY OF ANY KIND. SENSOPIA DISCLAIMS ANY WARRANTY INCLUDING, WITHOUT LIMITATION, SATISFACTORY QUALITY OR ACCURACY OF DIMENSIONS.



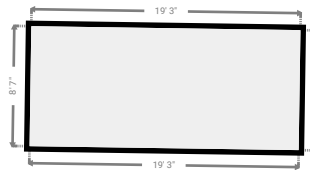
Building A

TOTAL AREA: 69728.96 sq ft • LIVING AREA: 69728.96 sq ft • FLOORS: 3 • ROOMS: 107



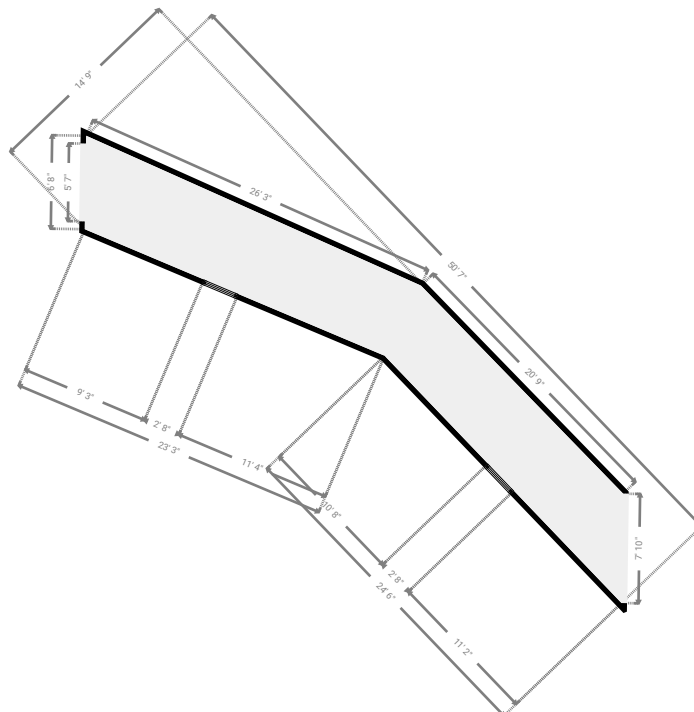
▼ Elevators 2nd Floor

WIDTH: 19' 3" • LENGTH: 8' 7" • CEILING HEIGHT: 10' 11"
AREA: 165.24 sq ft • PERIMETER: 55' 8"

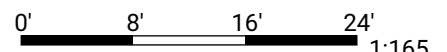


▼ Hall 2nd Floor

WIDTH: 14' 9" • LENGTH: 50' 7" • CEILING HEIGHT: 9' 7"
AREA: 268.99 sq ft • PERIMETER: 109' 3"



THIS FLOORPLAN IS PROVIDED WITHOUT WARRANTY OF ANY KIND. SENSOPIA DISCLAIMS ANY WARRANTY INCLUDING, WITHOUT LIMITATION, SATISFACTORY QUALITY OR ACCURACY OF DIMENSIONS.



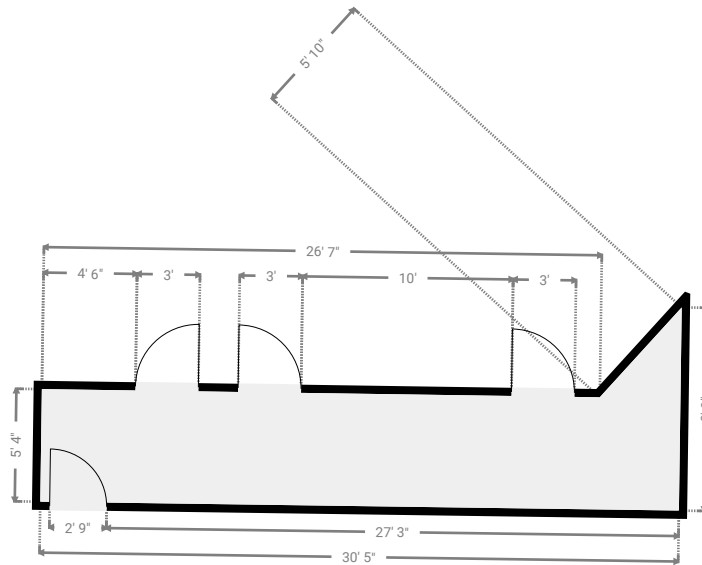
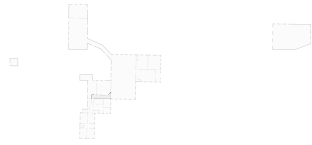
Building A

TOTAL AREA: 69728.96 sq ft • LIVING AREA: 69728.96 sq ft • FLOORS: 3 • ROOMS: 107



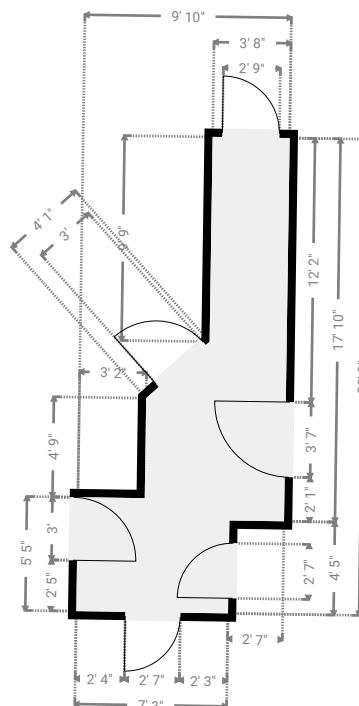
▼ Hall 2nd Floor

WIDTH: 30' 5" • LENGTH: 9' 8" • CEILING HEIGHT: 8' 11"
AREA: 171.43 sq ft • PERIMETER: 77' 11"



▼ Hall 2nd Floor

WIDTH: 9' 10" • LENGTH: 22' 8" • CEILING HEIGHT: 7' 3"
AREA: 123.66 sq ft • PERIMETER: 63' 5"



THIS FLOORPLAN IS PROVIDED WITHOUT WARRANTY OF ANY KIND. SENSOPIA DISCLAIMS ANY WARRANTY INCLUDING, WITHOUT LIMITATION, SATISFACTORY QUALITY OR ACCURACY OF DIMENSIONS.



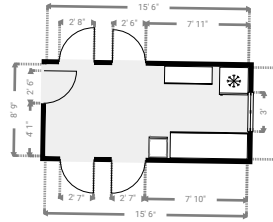
Building A

TOTAL AREA: 69728.96 sq ft • LIVING AREA: 69728.96 sq ft • FLOORS: 3 • ROOMS: 107



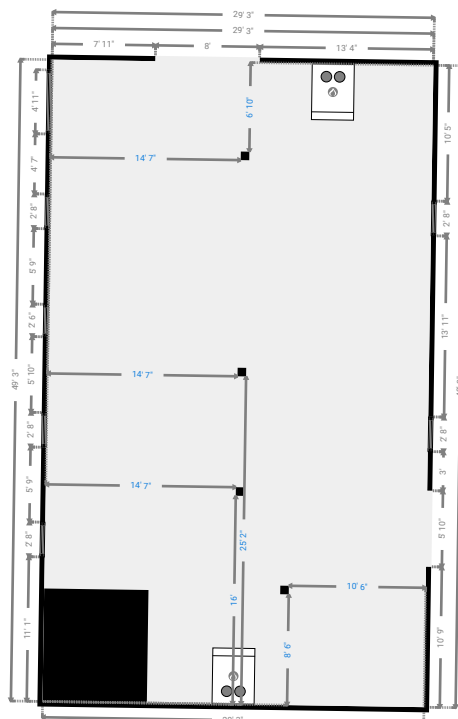
▼ Kitchenette 2nd Floor

WIDTH: 15' 6" • LENGTH: 7' • CEILING HEIGHT: 8' 6"
AREA: 108.94 sq ft • PERIMETER: 45' 1"

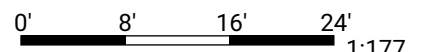


▼ Open Space 2nd Floor

WIDTH: 29' 3" • LENGTH: 49' 3" • CEILING HEIGHT: 9' 3"
AREA: 1440.72 sq ft • PERIMETER: 157'



THIS FLOORPLAN IS PROVIDED WITHOUT WARRANTY OF ANY KIND. SENSOPIA DISCLAIMS ANY WARRANTY INCLUDING, WITHOUT LIMITATION, SATISFACTORY QUALITY OR ACCURACY OF DIMENSIONS.



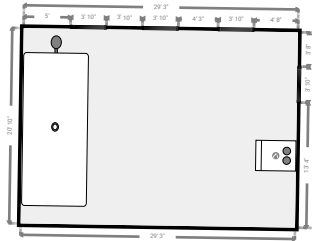
Building A

TOTAL AREA: 69728.96 sq ft • LIVING AREA: 69728.96 sq ft • FLOORS: 3 • ROOMS: 107



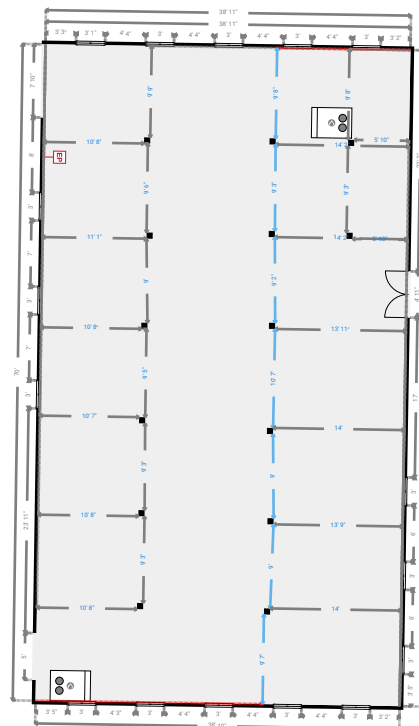
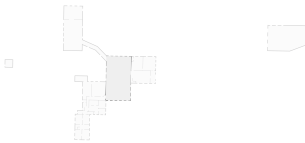
▼ Open Space 2nd Floor

WIDTH: 29' 3" • LENGTH: 20' 10" • CEILING HEIGHT: 12' 6"
AREA: 609.54 sq ft • PERIMETER: 100' 2"

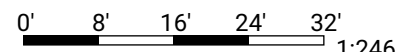


▼ Open Space 2nd Floor

WIDTH: 38' 11" • LENGTH: 70' • CEILING HEIGHT: 9' 3"
AREA: 2720.11 sq ft • PERIMETER: 217' 8"



THIS FLOORPLAN IS PROVIDED WITHOUT WARRANTY OF ANY KIND. SENSOPIA DISCLAIMS ANY WARRANTY INCLUDING, WITHOUT LIMITATION, SATISFACTORY QUALITY OR ACCURACY OF DIMENSIONS.



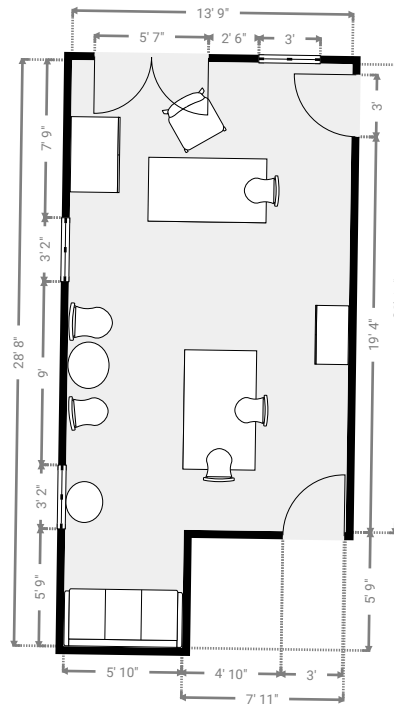
Building A

TOTAL AREA: 69728.96 sq ft • LIVING AREA: 69728.96 sq ft • FLOORS: 3 • ROOMS: 107



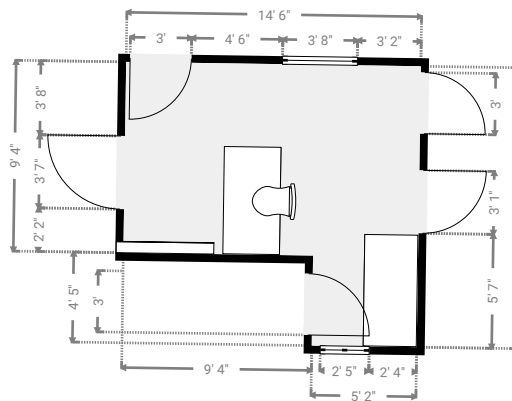
▼ Private Office 2nd Floor

WIDTH: 13' 9" • LENGTH: 28' 8" • CEILING HEIGHT: 8' 8"
AREA: 348.33 sq ft • PERIMETER: 84' 11"



▼ Private Office 2nd Floor

WIDTH: 14' 5" • LENGTH: 13' 9" • CEILING HEIGHT: 7' 6"
AREA: 157.58 sq ft • PERIMETER: 56' 5"



THIS FLOORPLAN IS PROVIDED WITHOUT WARRANTY OF ANY KIND. SENSOPIA DISCLAIMS ANY WARRANTY INCLUDING, WITHOUT LIMITATION, SATISFACTORY QUALITY OR ACCURACY OF DIMENSIONS.



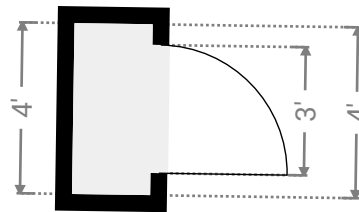
Building A

TOTAL AREA: 69728.96 sq ft • LIVING AREA: 69728.96 sq ft • FLOORS: 3 • ROOMS: 107



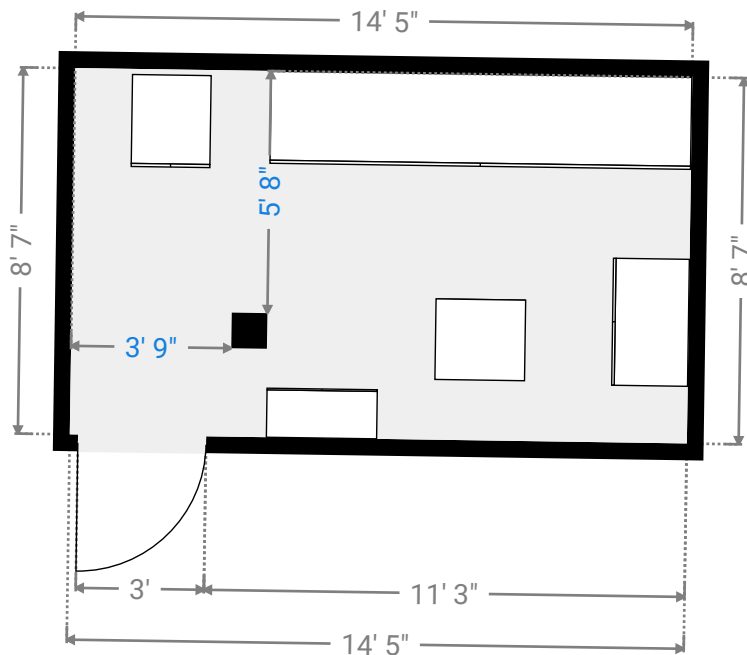
▼ Closet 2nd Floor

WIDTH: 1' 10" • LENGTH: 4' • CEILING HEIGHT: 10' 11"
AREA: 7.33 sq ft • PERIMETER: 11' 8"



▼ Private Office 2nd Floor

WIDTH: 14' 5" • LENGTH: 8' 7" • CEILING HEIGHT: 7' 6"
AREA: 123.80 sq ft • PERIMETER: 46'



THIS FLOORPLAN IS PROVIDED WITHOUT WARRANTY OF ANY KIND. SENSOPIA DISCLAIMS ANY WARRANTY INCLUDING, WITHOUT LIMITATION, SATISFACTORY QUALITY OR ACCURACY OF DIMENSIONS.



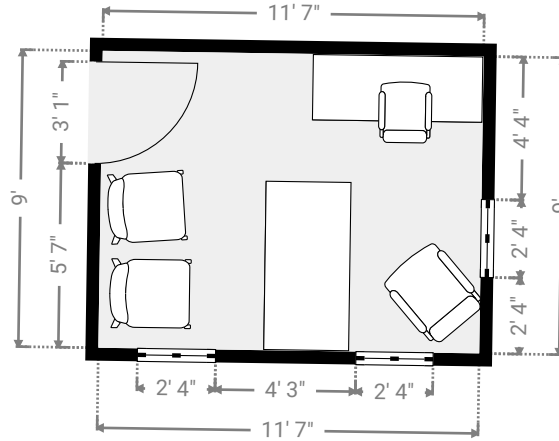
Building A

TOTAL AREA: 69728.96 sq ft • LIVING AREA: 69728.96 sq ft • FLOORS: 3 • ROOMS: 107



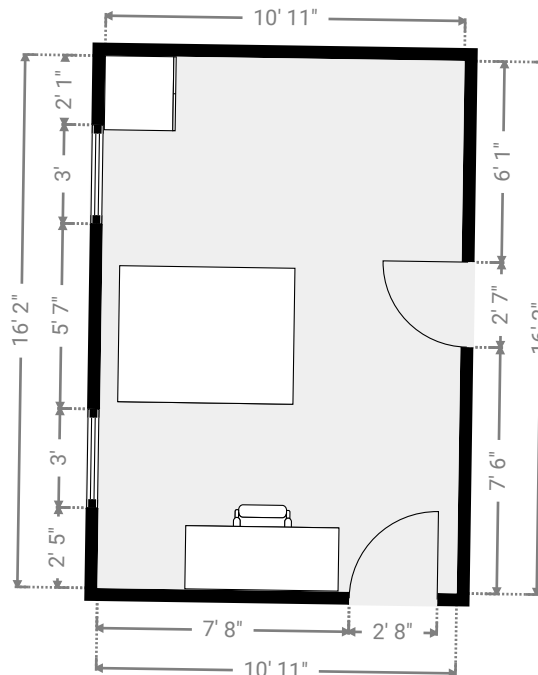
▼ Private Office 2nd Floor

WIDTH: 11' 7" • LENGTH: 9' • CEILING HEIGHT: 7' 7"
AREA: 104.12 sq ft • PERIMETER: 41' 2"

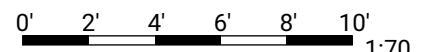


▼ Private Office 2nd Floor

WIDTH: 10' 11" • LENGTH: 16' 2" • CEILING HEIGHT: 8' 6"
AREA: 176.10 sq ft • PERIMETER: 54' 1"



THIS FLOORPLAN IS PROVIDED WITHOUT WARRANTY OF ANY KIND. SENSOPIA DISCLAIMS ANY WARRANTY INCLUDING, WITHOUT LIMITATION, SATISFACTORY QUALITY OR ACCURACY OF DIMENSIONS.



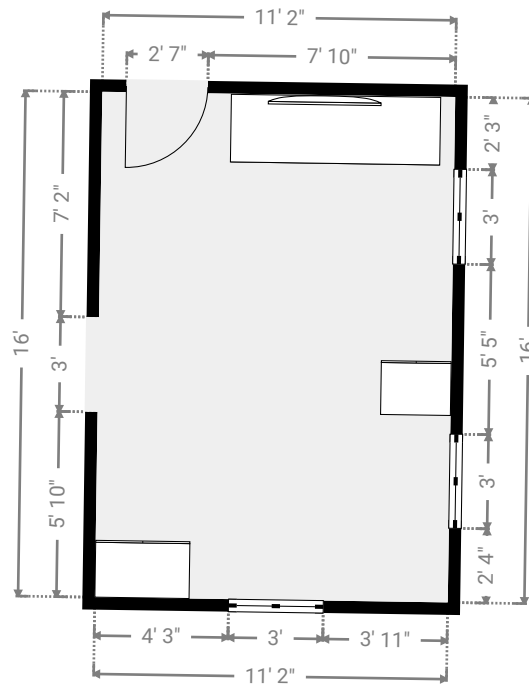
Building A

TOTAL AREA: 69728.96 sq ft • LIVING AREA: 69728.96 sq ft • FLOORS: 3 • ROOMS: 107



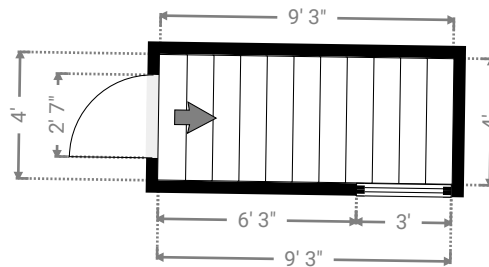
▼ Private Office 2nd Floor

WIDTH: 11' 2" • LENGTH: 16' • CEILING HEIGHT: 8' 6"
AREA: 178.54 sq ft • PERIMETER: 54' 4"



▼ Stairway 2nd Floor

WIDTH: 9' 3" • LENGTH: 4' • CEILING HEIGHT: 10' 11"
AREA: 37.12 sq ft • PERIMETER: 26' 7"



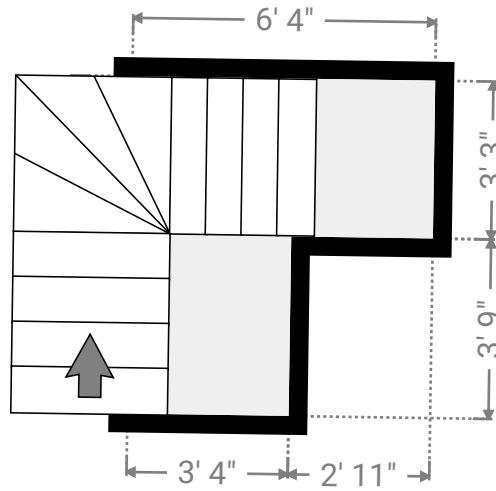
Building A

TOTAL AREA: 69728.96 sq ft • LIVING AREA: 69728.96 sq ft • FLOORS: 3 • ROOMS: 107



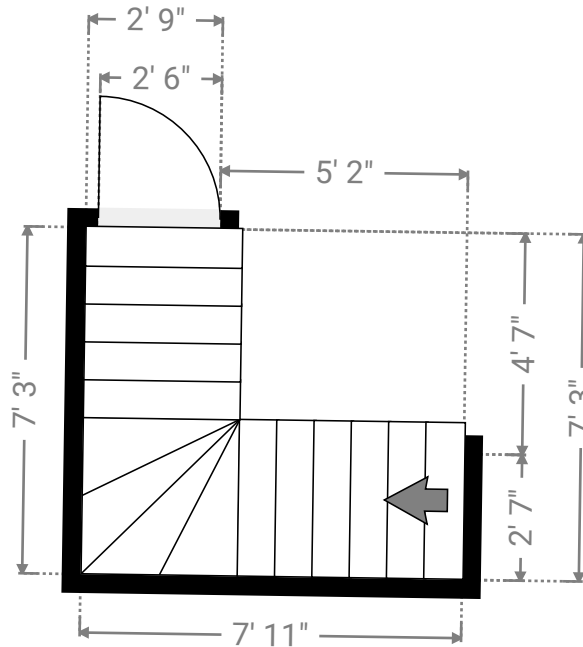
▼ Stairway 2nd Floor

WIDTH: 6' 4" • LENGTH: 7' • CEILING HEIGHT: 8' 6"
AREA: 33.21 sq ft • PERIMETER: 26' 8"



▼ Stairway 2nd Floor

WIDTH: 7' 11" • LENGTH: 7' 3" • CEILING HEIGHT: 10' 11"
AREA: 33.60 sq ft • PERIMETER: 30' 4"



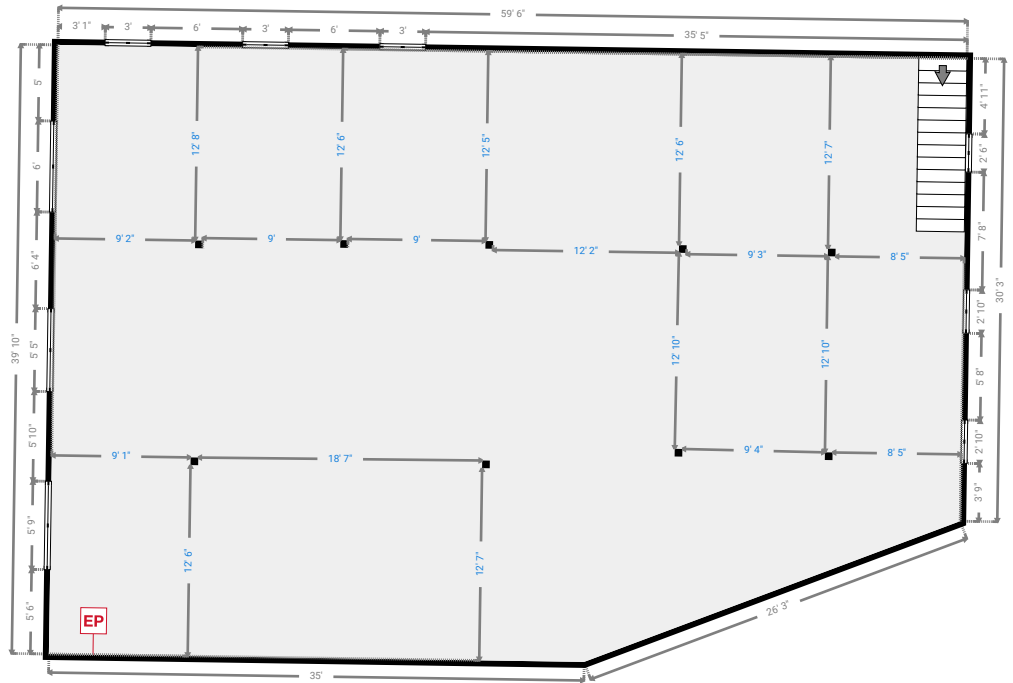
Building A

TOTAL AREA: 69728.96 sq ft • LIVING AREA: 69728.96 sq ft • FLOORS: 3 • ROOMS: 107



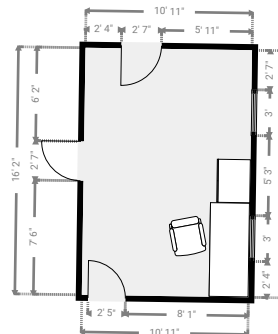
▼ Storage 2nd Floor

WIDTH: 59' 6" • LENGTH: 39' 10" • CEILING HEIGHT: 10' 8"
AREA: 2254.94 sq ft • PERIMETER: 191'

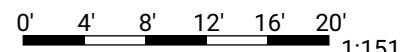


▼ Storage 2nd Floor

WIDTH: 10' 11" • LENGTH: 16' 2" • CEILING HEIGHT: 8' 6"
AREA: 176.32 sq ft • PERIMETER: 54' 2"



THIS FLOORPLAN IS PROVIDED WITHOUT WARRANTY OF ANY KIND. SENSOPIA DISCLAIMS ANY WARRANTY INCLUDING, WITHOUT LIMITATION, SATISFACTORY QUALITY OR ACCURACY OF DIMENSIONS.



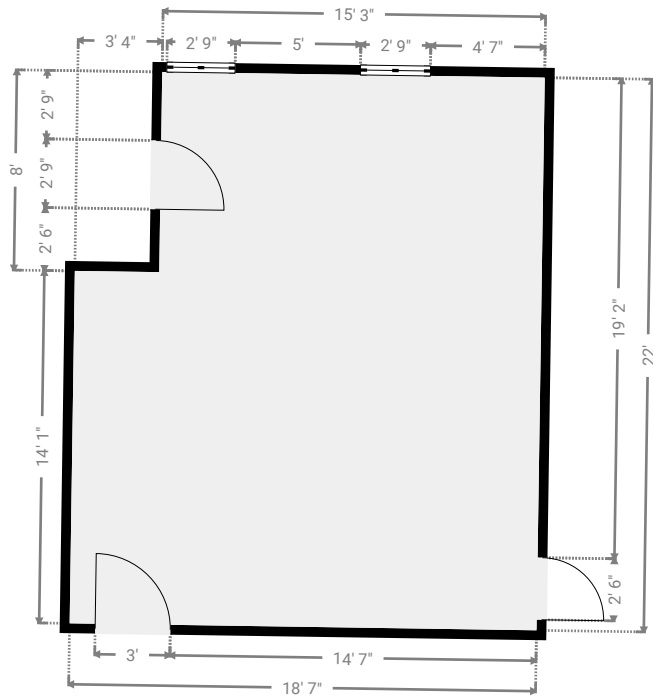
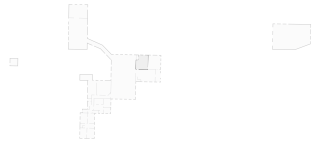
Building A

TOTAL AREA: 69728.96 sq ft • LIVING AREA: 69728.96 sq ft • FLOORS: 3 • ROOMS: 107



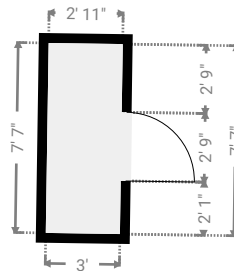
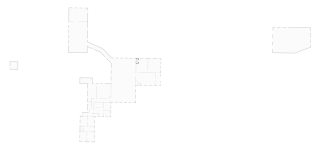
▼ Storage 2nd Floor

WIDTH: 18' 7" • LENGTH: 22' • CEILING HEIGHT: 10' 6"
AREA: 383.44 sq ft • PERIMETER: 81' 4"



▼ Closet 2nd Floor

WIDTH: 3' • LENGTH: 7' 7" • CEILING HEIGHT: 10' 11"
AREA: 22.39 sq ft • PERIMETER: 21' 1"



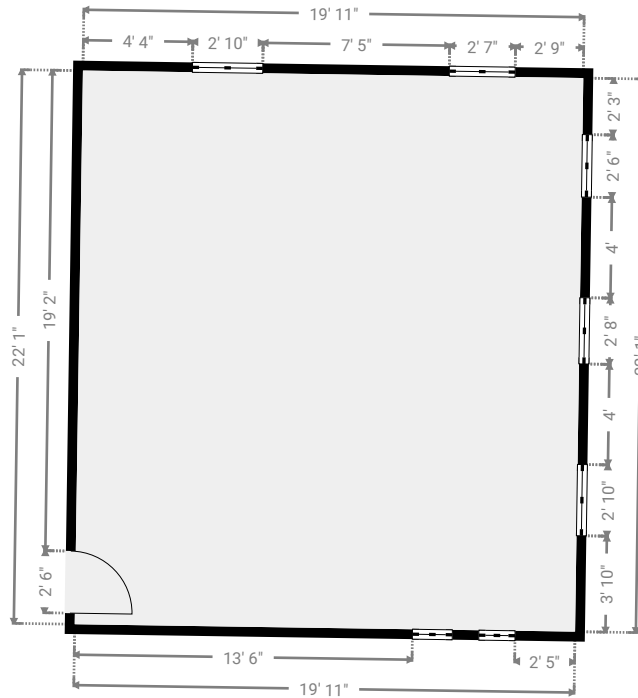
Building A

TOTAL AREA: 69728.96 sq ft • LIVING AREA: 69728.96 sq ft • FLOORS: 3 • ROOMS: 107



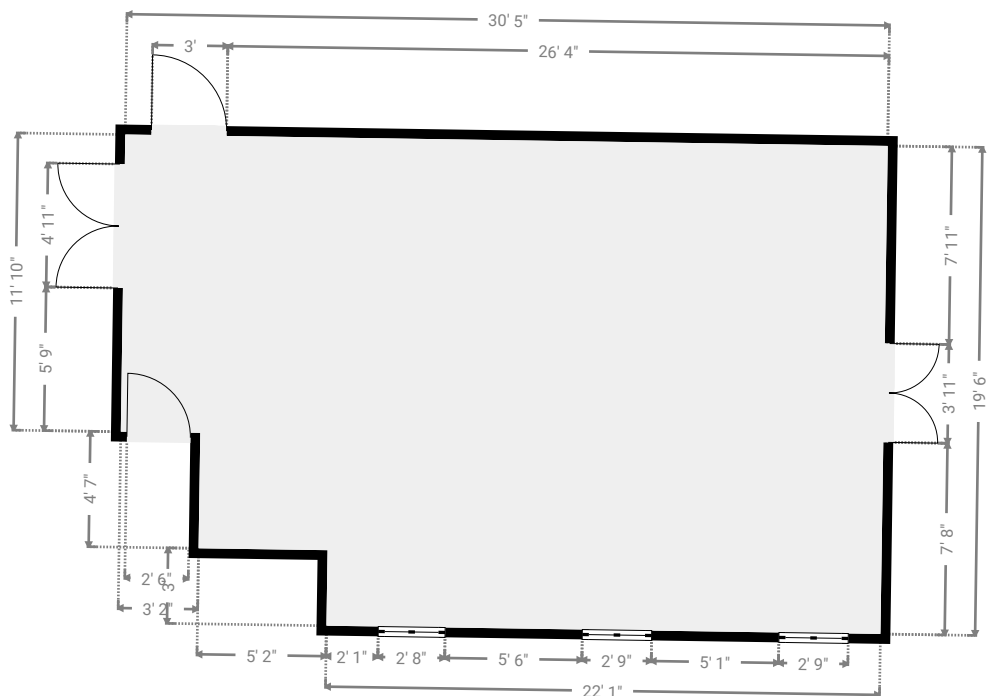
▼ Storage 2nd Floor

WIDTH: 19' 11" • LENGTH: 22' 1" • CEILING HEIGHT: 10' 10"
AREA: 440.46 sq ft • PERIMETER: 84' 1"

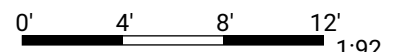


▼ Storage 2nd Floor

WIDTH: 30' 5" • LENGTH: 19' 6" • CEILING HEIGHT: 10' 9"
AREA: 552.19 sq ft • PERIMETER: 99' 9"



THIS FLOORPLAN IS PROVIDED WITHOUT WARRANTY OF ANY KIND. SENSOPIA DISCLAIMS ANY WARRANTY INCLUDING, WITHOUT LIMITATION, SATISFACTORY QUALITY OR ACCURACY OF DIMENSIONS.



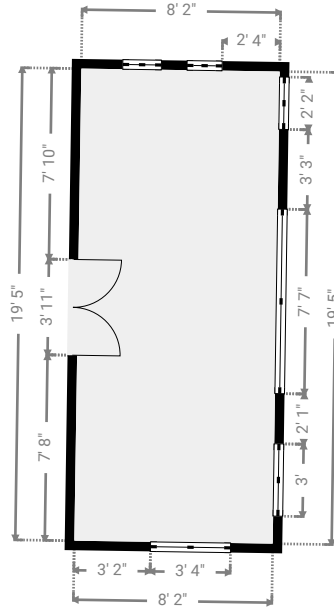
Building A

TOTAL AREA: 69728.96 sq ft • LIVING AREA: 69728.96 sq ft • FLOORS: 3 • ROOMS: 107



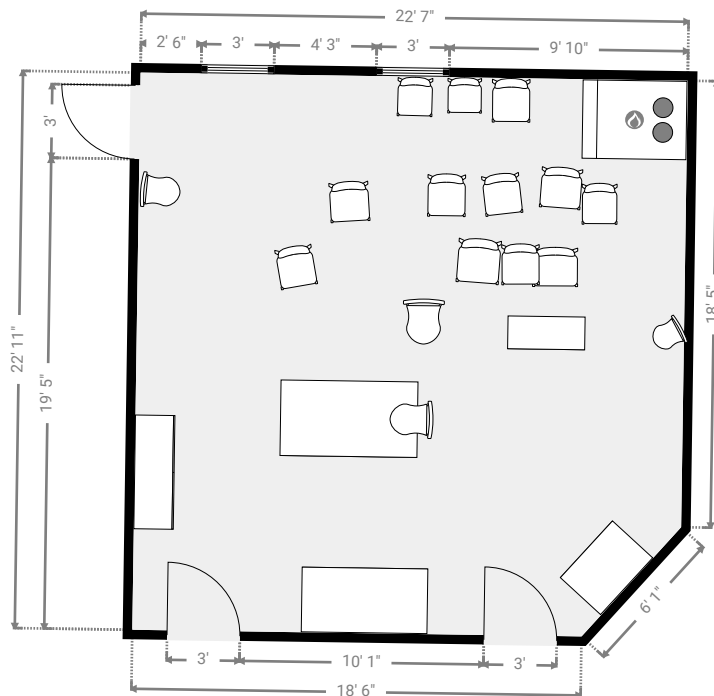
▼ Storage 2nd Floor

WIDTH: 8' 2" • LENGTH: 19' 5" • CEILING HEIGHT: 10' 11"
AREA: 158.86 sq ft • PERIMETER: 55' 3"

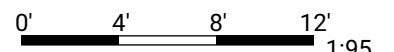


▼ Training Room 2nd Floor

WIDTH: 22' 6" • LENGTH: 22' 11" • CEILING HEIGHT: 9' 1"
AREA: 507.75 sq ft • PERIMETER: 88' 5"



THIS FLOORPLAN IS PROVIDED WITHOUT WARRANTY OF ANY KIND. SENSOPIA DISCLAIMS ANY WARRANTY INCLUDING, WITHOUT LIMITATION, SATISFACTORY QUALITY OR ACCURACY OF DIMENSIONS.



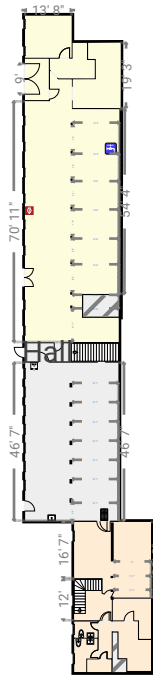
Building A

TOTAL AREA: 69728.96 sq ft • LIVING AREA: 69728.96 sq ft • FLOORS: 3 • ROOMS: 107



▼ Semi-Basement

TOTAL AREA: 5389.45 sq ft • LIVING AREA: 5389.45 sq ft • ROOMS: 16



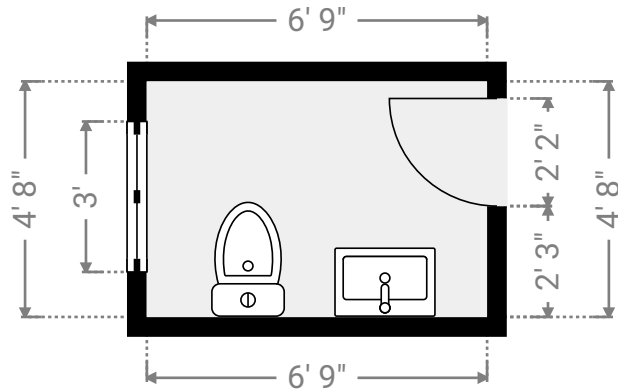
Building A

TOTAL AREA: 69728.96 sq ft • LIVING AREA: 69728.96 sq ft • FLOORS: 3 • ROOMS: 107



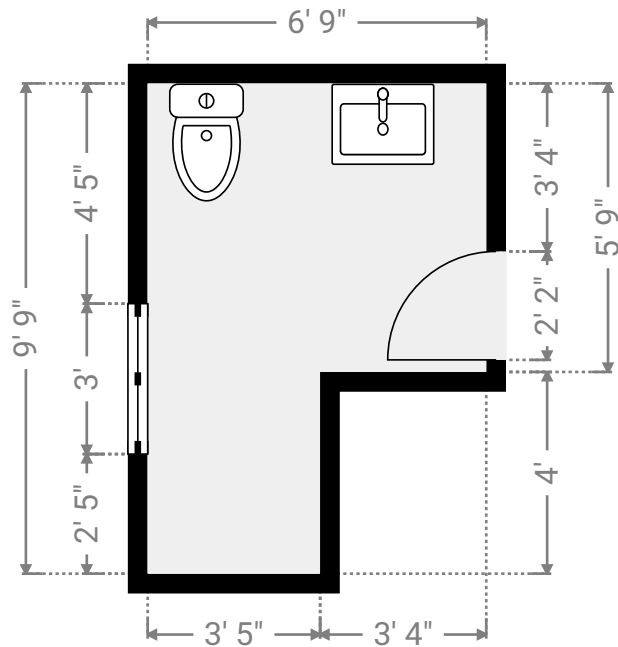
▼ Bathroom Semi-Basement

WIDTH: 6' 9" • LENGTH: 4' 8" • CEILING HEIGHT: 7' 1"
AREA: 31.86 sq ft • PERIMETER: 23'



▼ Bathroom Semi-Basement

WIDTH: 6' 9" • LENGTH: 9' 9" • CEILING HEIGHT: 7' 2"
AREA: 52.66 sq ft • PERIMETER: 33' 1"



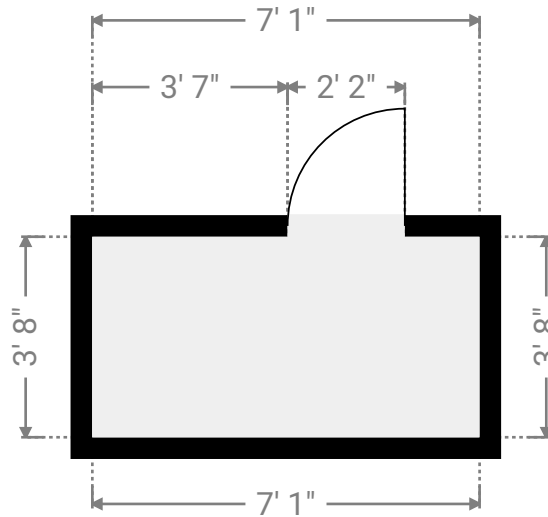
Building A

TOTAL AREA: 69728.96 sq ft • LIVING AREA: 69728.96 sq ft • FLOORS: 3 • ROOMS: 107



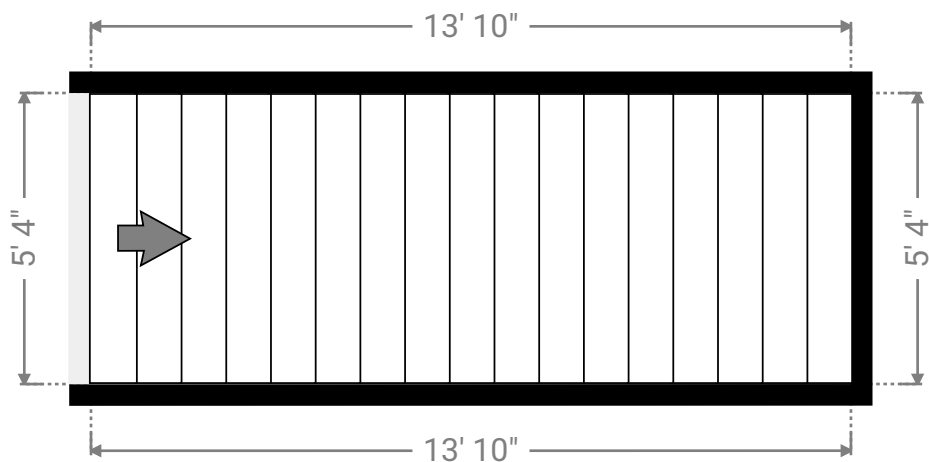
▼ Bathroom Semi-Basement

WIDTH: 7' 1" • LENGTH: 3' 8" • CEILING HEIGHT: 7' 6"
AREA: 25.73 sq ft • PERIMETER: 21' 5"



▼ Closet Semi-Basement

WIDTH: 13' 10" • LENGTH: 5' 4" • CEILING HEIGHT: 10' 8"
AREA: 73.28 sq ft • PERIMETER: 38' 3"



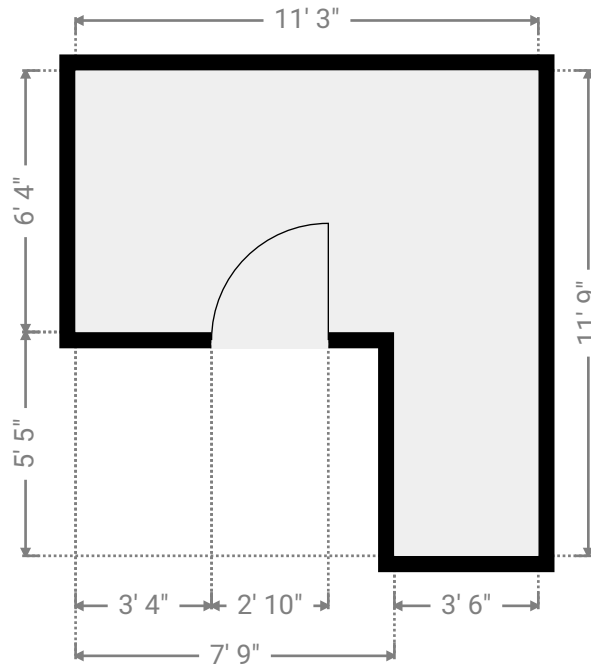
Building A

TOTAL AREA: 69728.96 sq ft • LIVING AREA: 69728.96 sq ft • FLOORS: 3 • ROOMS: 107



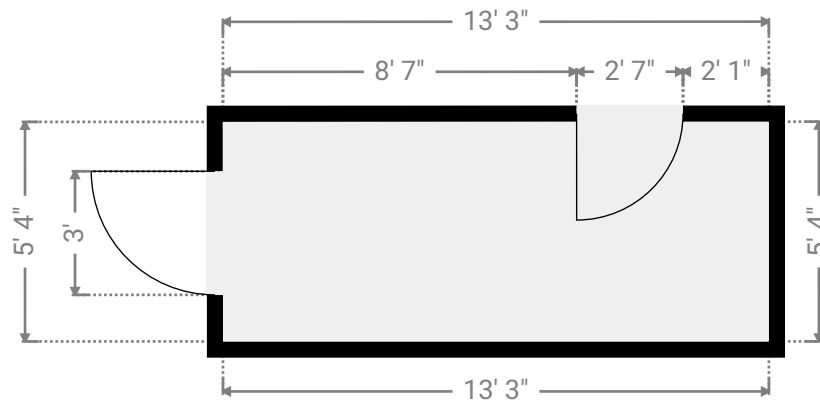
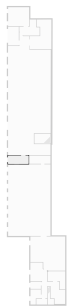
▼ Closet Semi-Basement

WIDTH: 11' 3" • LENGTH: 11' 9" • CEILING HEIGHT: 10' 8"
AREA: 90.26 sq ft • PERIMETER: 46'



▼ Hall Semi-Basement

WIDTH: 13' 3" • LENGTH: 5' 4" • CEILING HEIGHT: 10' 8"
AREA: 70.63 sq ft • PERIMETER: 37' 2"



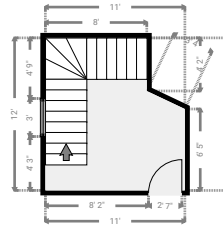
Building A

TOTAL AREA: 69728.96 sq ft • LIVING AREA: 69728.96 sq ft • FLOORS: 3 • ROOMS: 107



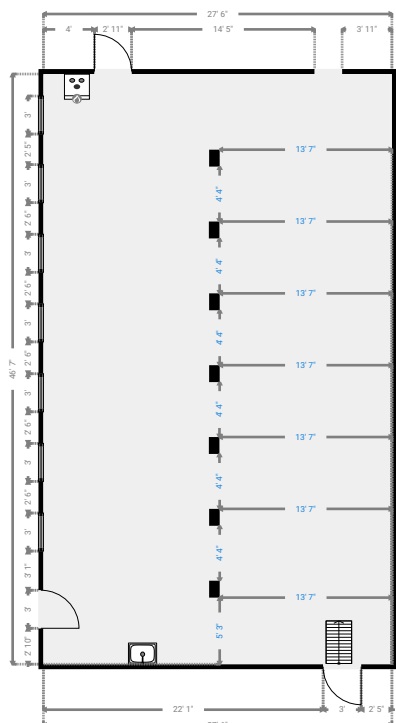
▼ Hall Semi-Basement

WIDTH: 11' • LENGTH: 12' • CEILING HEIGHT: 10' 8"
AREA: 117.66 sq ft • PERIMETER: 45'

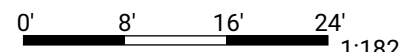


▼ Open Space Semi-Basement

WIDTH: 27' 6" • LENGTH: 46' 7" • CEILING HEIGHT: 10' 7"
AREA: 1279.48 sq ft • PERIMETER: 148' 1"



THIS FLOORPLAN IS PROVIDED WITHOUT WARRANTY OF ANY KIND. SENSOPIA DISCLAIMS ANY WARRANTY INCLUDING, WITHOUT LIMITATION, SATISFACTORY QUALITY OR ACCURACY OF DIMENSIONS.



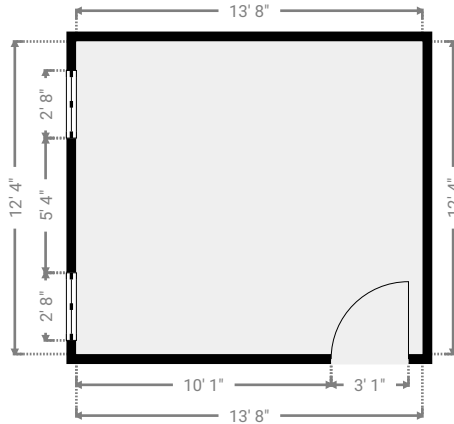
Building A

TOTAL AREA: 69728.96 sq ft • LIVING AREA: 69728.96 sq ft • FLOORS: 3 • ROOMS: 107



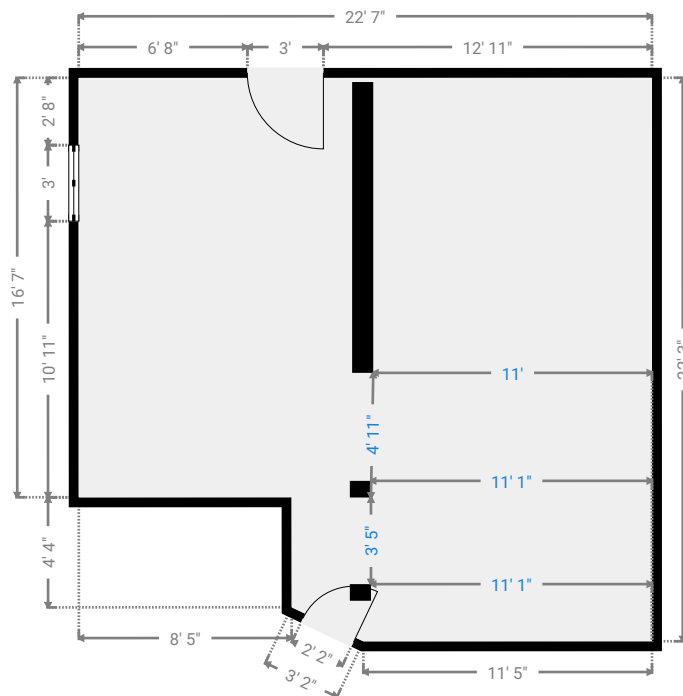
▼ Private Office Semi-Basement

WIDTH: 13' 8" • LENGTH: 12' 4" • CEILING HEIGHT: 7' 7"
AREA: 168.21 sq ft • PERIMETER: 51' 11"

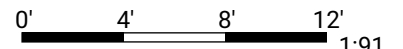


▼ Storage Semi-Basement

WIDTH: 22' 7" • LENGTH: 22' 3" • CEILING HEIGHT: 8' 7"
AREA: 452.78 sq ft • PERIMETER: 88' 7"



THIS FLOORPLAN IS PROVIDED WITHOUT WARRANTY OF ANY KIND. SENSOPIA DISCLAIMS ANY WARRANTY INCLUDING, WITHOUT LIMITATION, SATISFACTORY QUALITY OR ACCURACY OF DIMENSIONS.



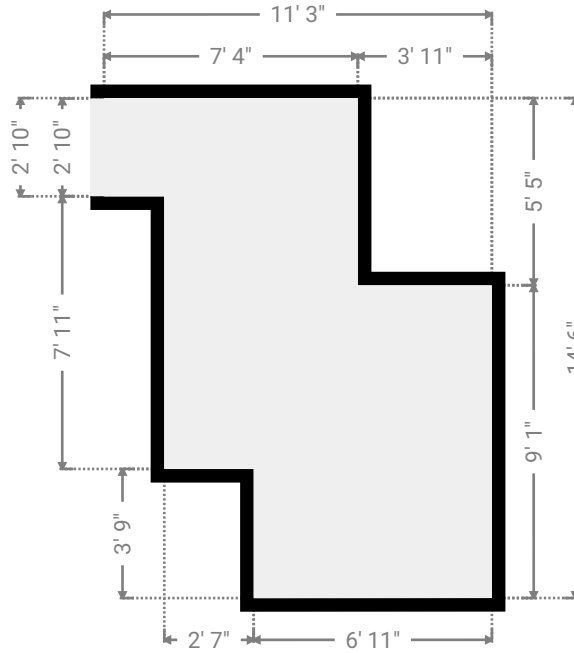
Building A

TOTAL AREA: 69728.96 sq ft • LIVING AREA: 69728.96 sq ft • FLOORS: 3 • ROOMS: 107



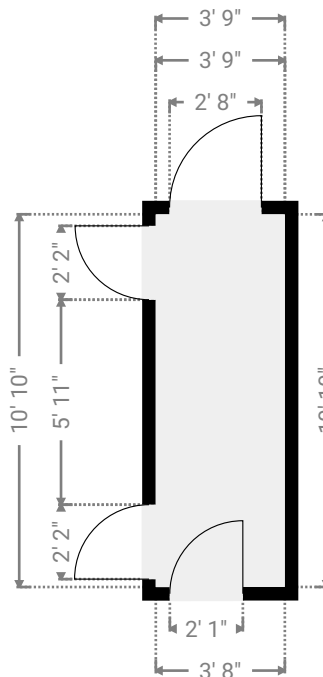
▼ Storage Semi-Basement

WIDTH: 11' 3" • LENGTH: 14' 6" • CEILING HEIGHT: 7'
AREA: 112.21 sq ft • PERIMETER: 51' 7"



▼ Storage Semi-Basement

WIDTH: 3' 9" • LENGTH: 10' 10" • CEILING HEIGHT: 7'
AREA: 40.57 sq ft • PERIMETER: 29' 2"



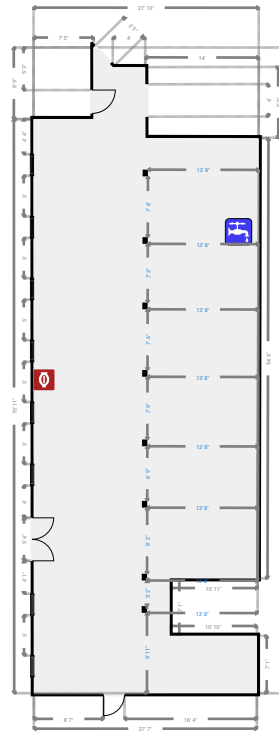
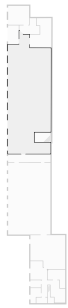
Building A

TOTAL AREA: 69728.96 sq ft • LIVING AREA: 69728.96 sq ft • FLOORS: 3 • ROOMS: 107



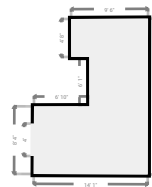
▼ Storage Semi-Basement

WIDTH: 27' 10" • LENGTH: 79' 9" • CEILING HEIGHT: 10' 8"
AREA: 1898.45 sq ft • PERIMETER: 235' 2"



▼ Storage Semi-Basement

WIDTH: 14' 1" • LENGTH: 19' 3" • CEILING HEIGHT: 9' 6"
AREA: 206.96 sq ft • PERIMETER: 71'



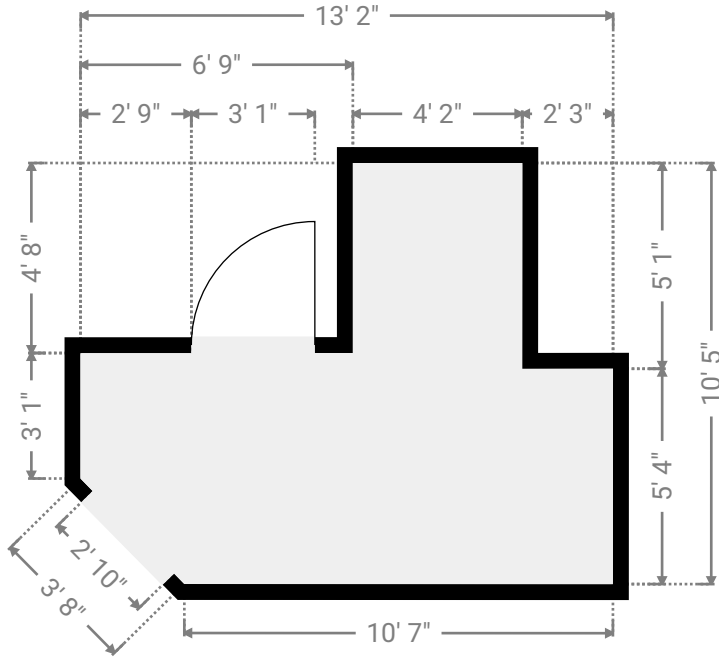
Building A

TOTAL AREA: 69728.96 sq ft • LIVING AREA: 69728.96 sq ft • FLOORS: 3 • ROOMS: 107



▼ Storage Semi-Basement

WIDTH: 13' 2" • LENGTH: 10' 5" • CEILING HEIGHT: 7' 7"
AREA: 90.48 sq ft • PERIMETER: 45' 7"



▼ Vestibule Semi-Basement

WIDTH: 6' 11" • LENGTH: 12' 2" • CEILING HEIGHT: 9' 5"
AREA: 84.42 sq ft • PERIMETER: 38' 2"

