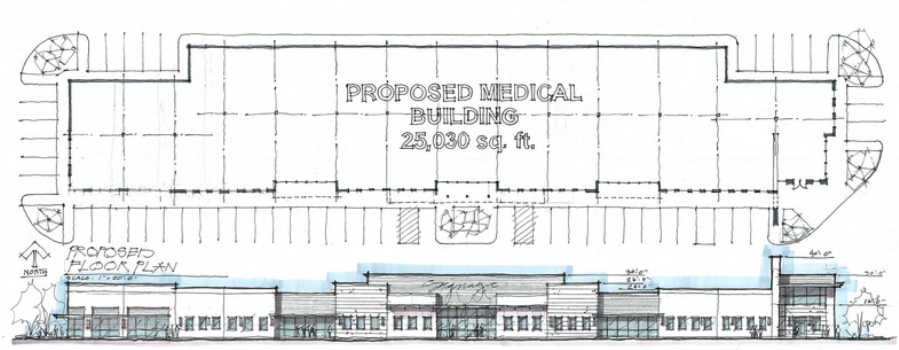




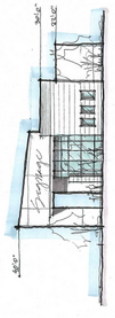
PROPOSED WEST ELEVATION
SCALE: 1/4" = 1'-0"



PROPOSED MEDICAL BUILDING
25,030 sq. ft.

PROPOSED FLOOR PLAN
SCALE: 1/8" = 1'-0"

PROPOSED SOUTH ELEVATION
SCALE: 1/4" = 1'-0"



PROPOSED EAST ELEVATION
SCALE: 1/4" = 1'-0"

