



#101-103, 7609 42 Street, Leduc

**Industrial Bays w/ 3 x 5T Cranes**

## PROPERTY DETAILS

Address:	#101-103, 7609 42 Street, Leduc
Legal:	Plan 0725902 Block 9 Lot 22
Zoning:	IM (Medium Industrial)
Total Size:	14,188 SF (+/-)
Warehouse Size:	11,500 SF (+/-)
Office Size:	2,688 SF (+/-)
Base Rent:	\$16.75 SF
Op Costs:	\$4.00 (TBC)
Available:	30 days notice

## PROPERTY HIGHLIGHTS

- 3 Industrial Bays with offices
- 3 Private offices + reception area and kitchen
- 3 x 5 Ton cranes
- 3 Oversize grade loading doors (20')
- Neat condition: ideal for many industrial users
- Large marshalling area with storage yard

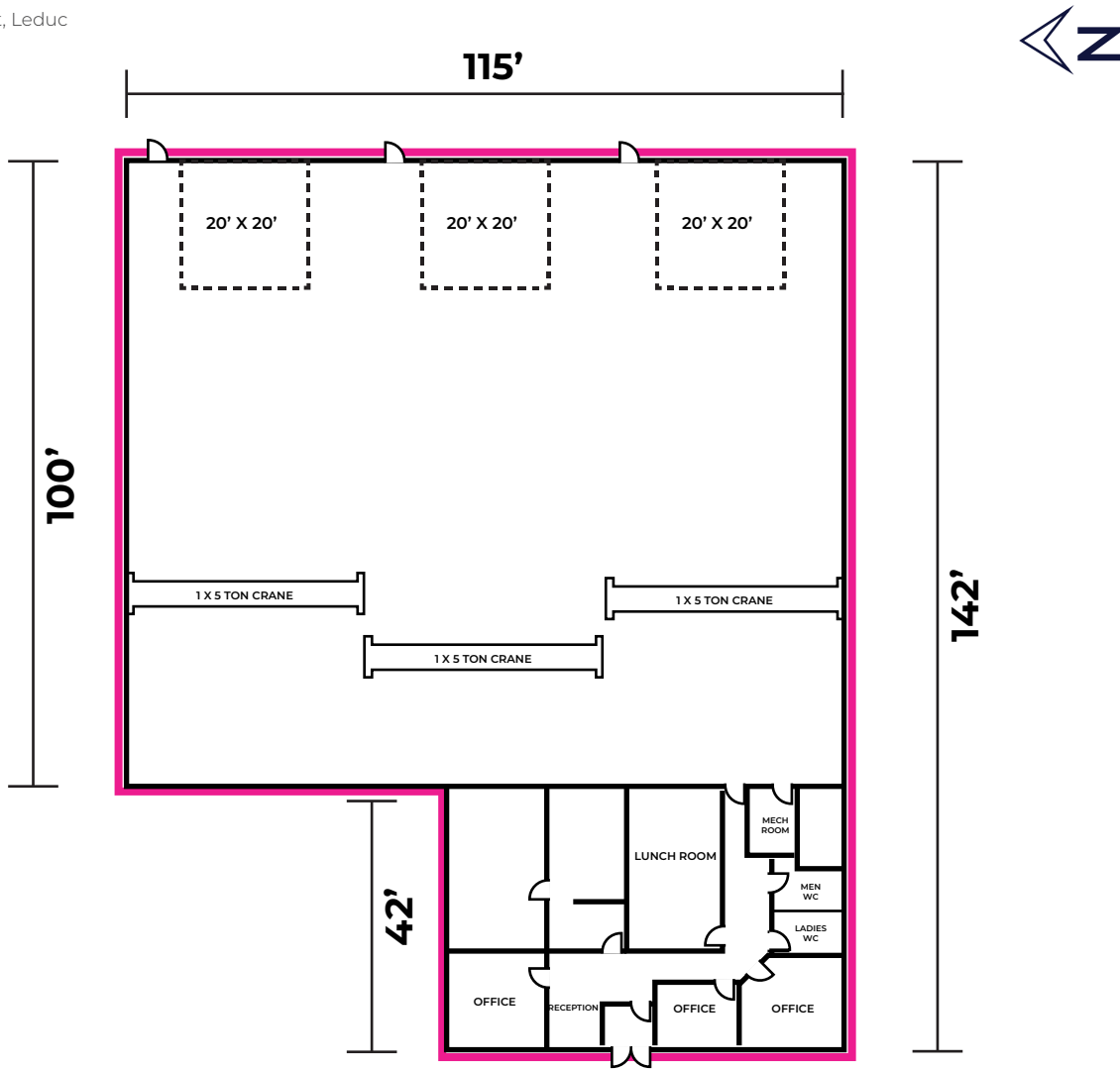


**Jim McKinnon**  
 Broker / Partner  
 780-719-8183  
 jim@aicrecommercial.com

**Erin Oatway**  
 Partner / Associate  
 780-218-7585  
 erin@aicrecommercial.com

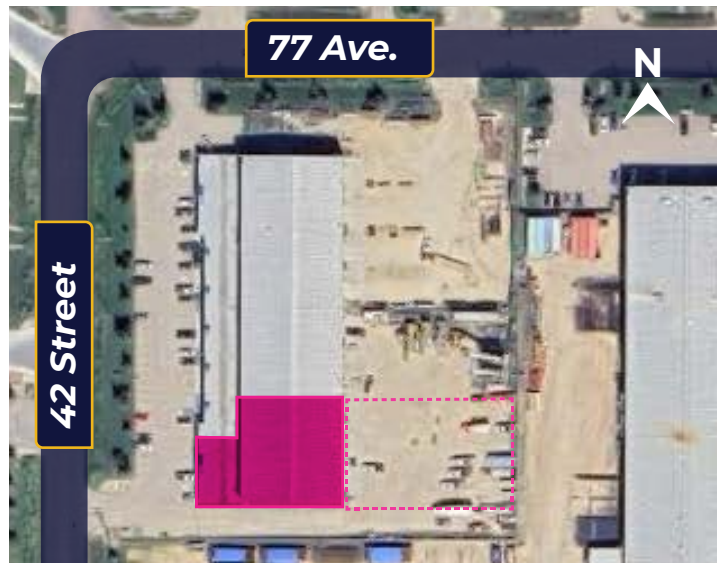
# FLOOR PLAN

#101-103, 7609 42 Street, Leduc



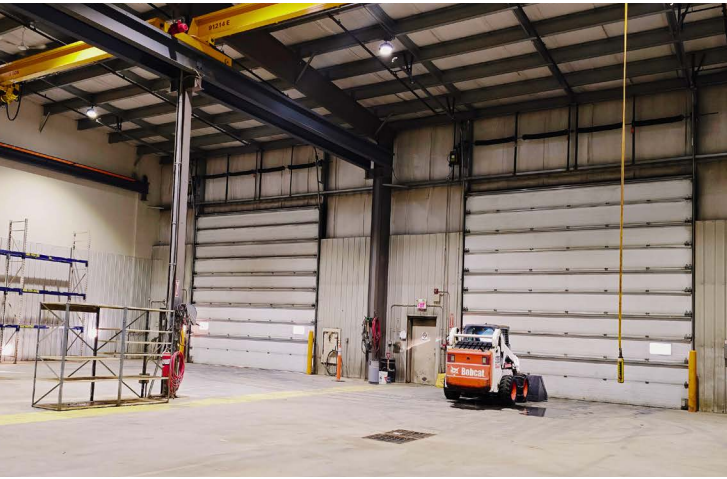
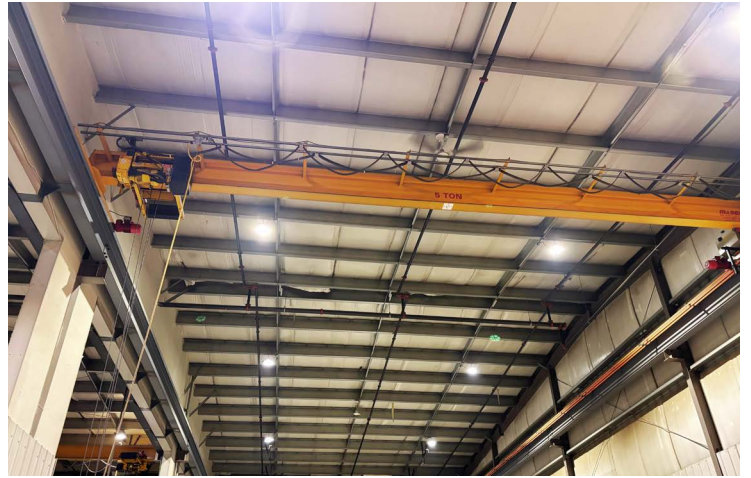
## PROPERTY DETAILS

Yard:	Yes / Compound
Heat:	In-Floor
A/C:	Yes / In Office
Power:	600 v / 400 Amp / 3 Phase – TBC by Tenant
Loading:	3 x 20' x 20' Loading Grade Doors
Sump:	Yes
Drain:	Floor Drains
Ceiling Height:	24' Clear
Crane:	3 x 5 Ton
Underhook Height:	18' (TBC)



Disclaimer: This floorplan is for illustrative purposes only and is not to scale. All measurements, dimensions, and layouts are approximate and should not be relied upon as exact or precise.

Property features:





**NEIGHBORHOOD HIGHLIGHTS**

- **Prime Location in Leduc Business Park:** Situated in a well-established industrial hub with easy access to major transportation routes.
- **Access to Major Highways:** Quick access to Highway 2, Highway 39, and the QEII Highway, connecting to Edmonton, Nisku, and other major Alberta regions.
- **Growing Industrial and Commercial Area:** Surrounded by a diverse range of businesses, making it ideal for manufacturing, logistics, and warehousing.
- **Nearby Amenities:** Close to hotels, restaurants, and service stations, providing convenience for employees and business operations.
- **Proximity to Leduc Downtown:** Offers easy access to local shopping centers, dining, and service-based businesses.



Jim McKinnon  
Broker / Partner  
780-719-8183  
jim@aicrecommercial.com

Erin Oatway  
Partner / Associate  
780-218-7585  
erin@aicrecommercial.com

