

McMinnville Market Center

625—699 SW Keck Drive, McMinnville OR 97128



Albertsons anchored shopping center located at the South end of McMinnville. **Linfield College neighbors the property** with an enrollment of over 1,600 students. Other tenants include Starbucks, Snap Fitness, Frozen Yogurt, Sushi, GNC, and AT&T Wireless.



Available:

Suite 625—1,400 SF

**\$25.00 PSF/Year, NNN
Approx. \$6.20 NNN**



**Craig Barnard | craig@barnardcommercial.com
Ashley Rhea | ashley@barnardcommercial.com**

www.barnardcommercial.com | 503.675.0900 | 5200 Meadows Rd, Suite 150, Lake Oswego, OR 97035

McMinnville Market Center

699 SW Keck Drive, McMinnville OR 97128



Craig Barnard | craig@barnardcommercial.com
Ashley Rhea | ashley@barnardcommercial.com

www.barnardcommercial.com | 503.675.0900 | 5200 Meadows Rd, Suite 150, Lake Oswego, OR 97035

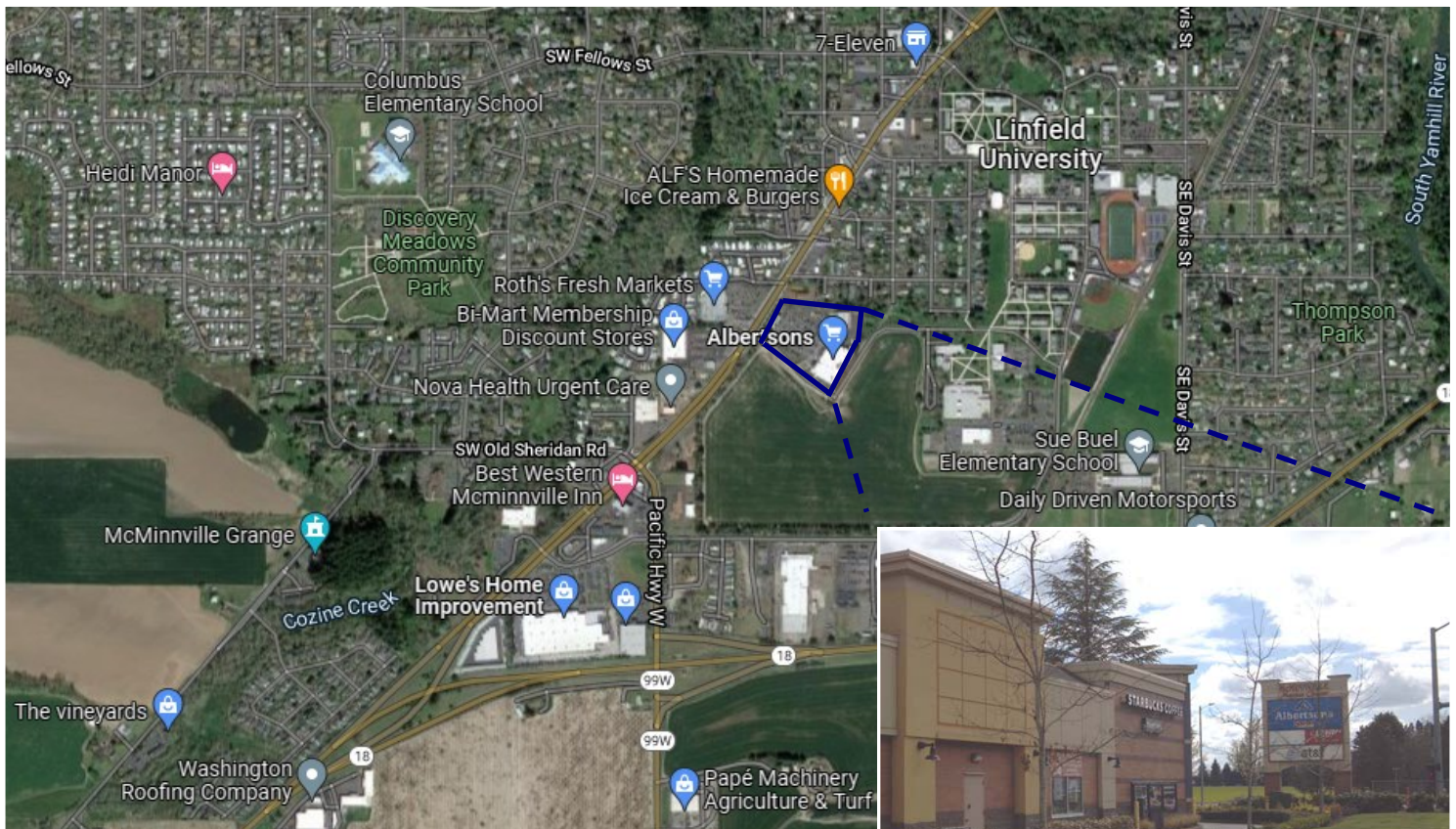
McMinnville Market Center

699 SW Keck Drive, McMinnville OR 97128

City of McMinnville:

McMinnville is located in the western portion of Oregon 's agriculturally rich Willamette Valley on U.S. Highway 99W, in the heart of Willamette Valley's wine country.

- McMinnville is home to Linfield College. This independent, comprehensive, liberal arts college is nationally recognized for its strong teaching faculty, outstanding science programs and distinctive international emphasis. Linfield is one of the oldest colleges in the west and offers 41 majors for bachelor degrees. The 193-acre residential campus serves over 1,600 students.
- Chemeketa Community College's McMinnville Campus offers a wide range of educational services in McMinnville and Yamhill County.



Craig Barnard | craig@barnardcommercial.com
Ashley Rhea | ashley@barnardcommercial.com

www.barnardcommercial.com | 503.675.0900 | 5200 Meadows Rd, Suite 150, Lake Oswego, OR 97035