

280 N. MIDLAND
AVENUE
SADDLE BROOK, NJ

Zuckerberg's
Industrial Park

2,640 SF | BUILDING C

**1 Acre
Parking!**

Warehouse /
Flex Space

Excellent
highway
access

Major
upgrades
throughout
park

Professionally
owned &
managed by

SITEX
GROUP








NAI James E. Hanson
COMMERCIAL REAL ESTATE SERVICES, WORLDWIDE

 For *more* information

Kenneth D. Lundberg, SIOR
Senior Vice President
201 488 5800 x138
klundberg@naihanson.com

Patrick Lennon
Senior Vice President
201 488 5800 x109
plennon@naihanson.com

Lorenzo Lambiase, MBA, CCIM
Vice President
201 488 5800 x176
llambiase@naihanson.com

FOLLOW US!      | NJ Offices: Teterboro | Parsippany | naihanson.com | Member of NAI Global with 325+ Offices Worldwide

The information contained herein has been obtained from sources considered to be reliable, but no guarantee of its accuracy is made by NAI James E. Hanson

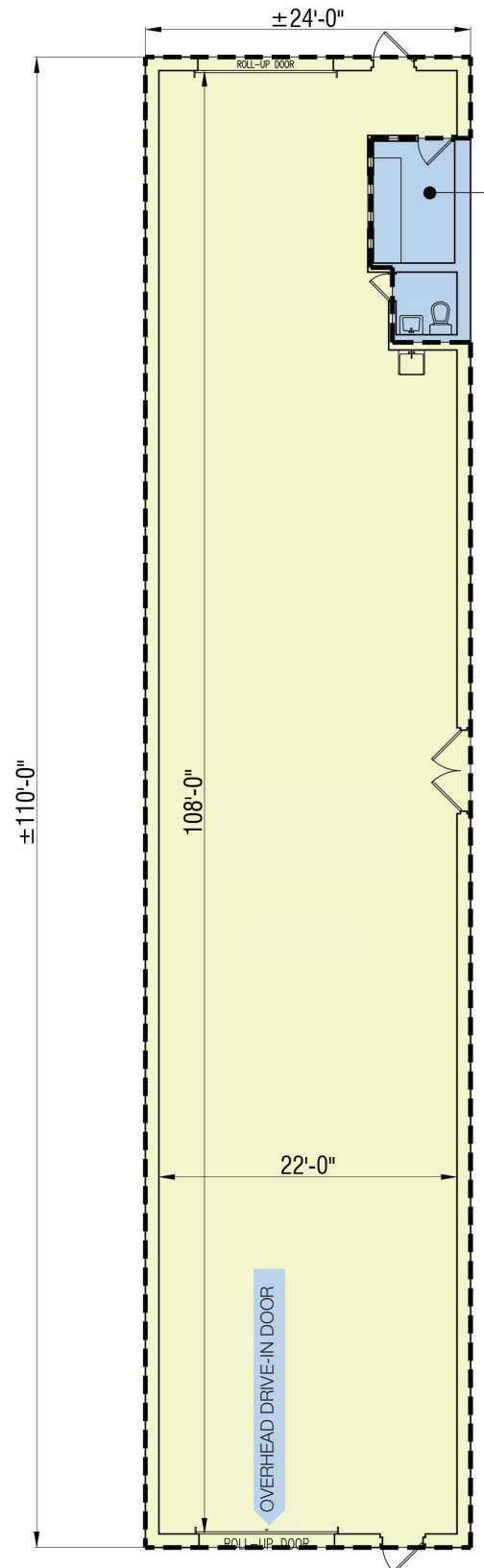
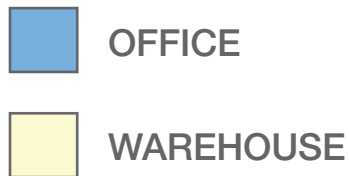
Total Space
±2,640 SF

Warehouse
±2,538 SF

Office
±102 SF

Two (2)
Drive-ins

Ceiling Height
12'3"



At the Crossroads of Bergen County

Access building via N. Midland Ave
Click [HERE](#) for directions



GW Bridge
10.5 miles



Lincoln Tunnel
14.7 miles



Pulaski Skyway
18.0 miles



Holland Tunnel
18.8 miles



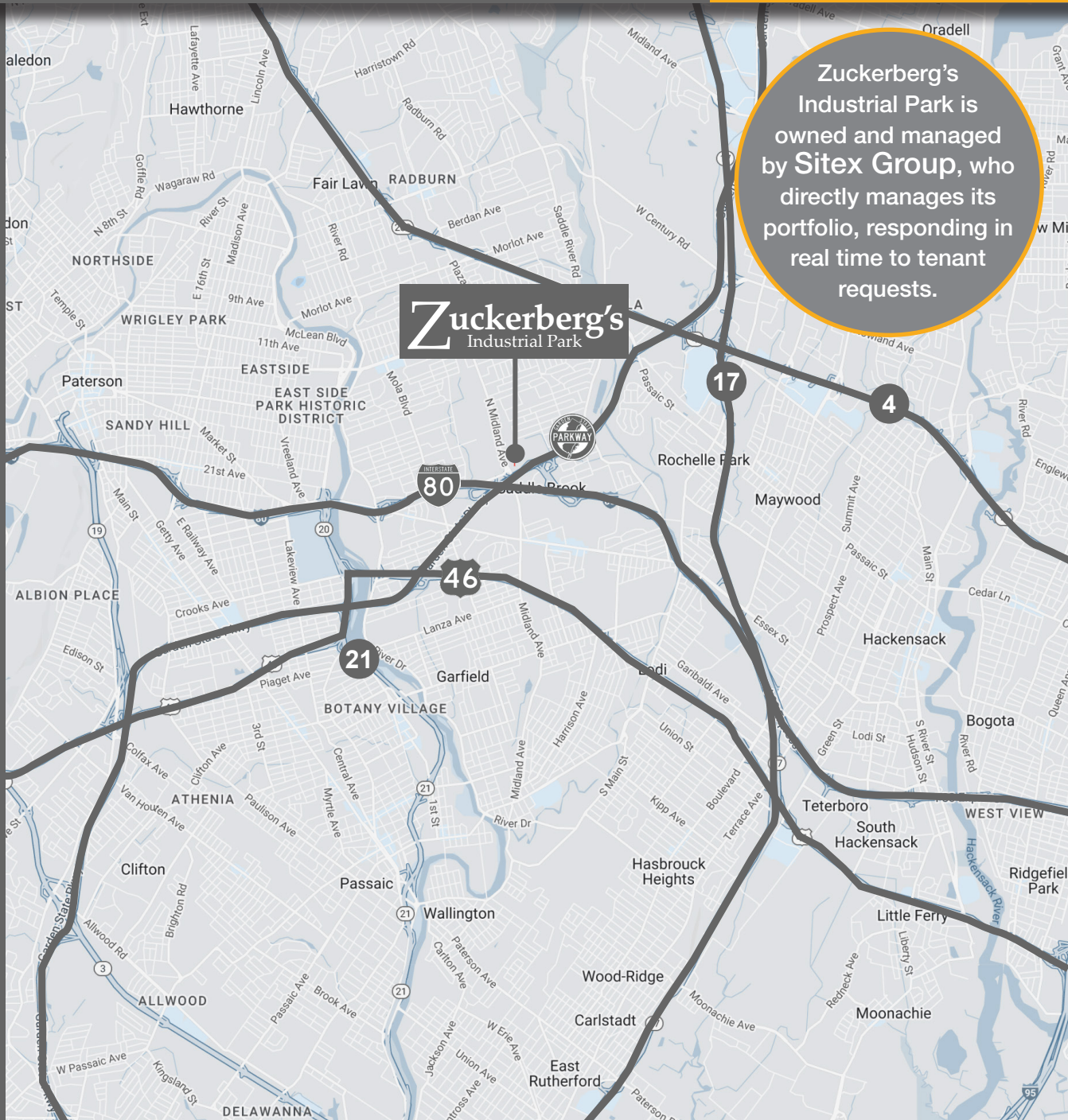
Mario Cuomo Bridge
22.4 miles



Newark Airport
23.7 miles



Port Newark
24.5 miles



Zuckerberg's Industrial Park is owned and managed by Sitex Group, who directly manages its portfolio, responding in real time to tenant requests.

For leasing information, call 201 488 5800
Ken Lundberg x138 / Pat Lennon x109 / Lorenzo Lambiase x176