

324 Ledge Rd
Macedonia, OH 44056

For Lease

Price:
\$1800/month



Overview

Price

\$1800/month

Address

324 Ledge Rd
Macedonia, OH 44056

Property Description

1610 SF

Building Highlights

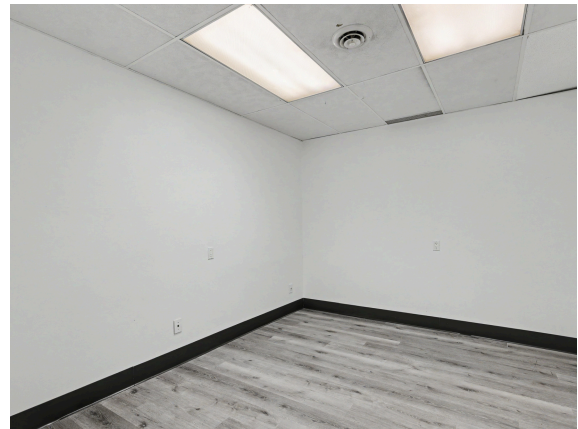
Ample Parking

This well-maintained 1610 square foot commercial space in Macedonia offers a functional and versatile layout ideal for a variety of business needs. The suite features three private offices, a dedicated storage room, and two restrooms, providing both convenience and efficiency for daily operations. An added benefit is the opportunity to lease adjacent flex space which is an additional 1225 square feet. This is perfect for warehouse use, storage, or future business expansion, allowing your operations to grow seamlessly in one location. Plenty of parking available. Strategically positioned with immediate access to major highways including I-271 and I-480. The property offers excellent regional connectivity, making commuting and logistics seamless for both employees and clients. The surrounding area is a strong commercial corridor with a wide range of nearby amenities.



CONTACT:
Manar Elkurd
330.807.8423
manarelkurd@howardhanna.com





CONTACT:
Manar Elkurd
330.807.8423
manarelkurd@howardhanna.com

