

AVAILABLE

1810 Erie Blvd East  
Syracuse, New York 13210



Versatile Building with Ample Parking

## 4,200± SF on 1.30± Acres for Sale or Lease

### Property Highlights

- Well maintained with modern finishes
- Close proximity to I-690 Teall Avenue interchange and major employers / universities
- 10 minutes from Syracuse Hancock International Airport
- Large lot offers expansion potential
- Desirable Erie Blvd retail corridor
- Zoned "MX-2" in the City of Syracuse

Demographic	1 Mile	3 Miles	5 Miles
Population	23,373	137,979	211,997
Households	9,256	55,779	87,883
Average H.H. Income	\$66,914	\$69,948	\$80,072
Daytime Employees	11,103	130,170	194,794

Source: ESRI Business Analyst 2024



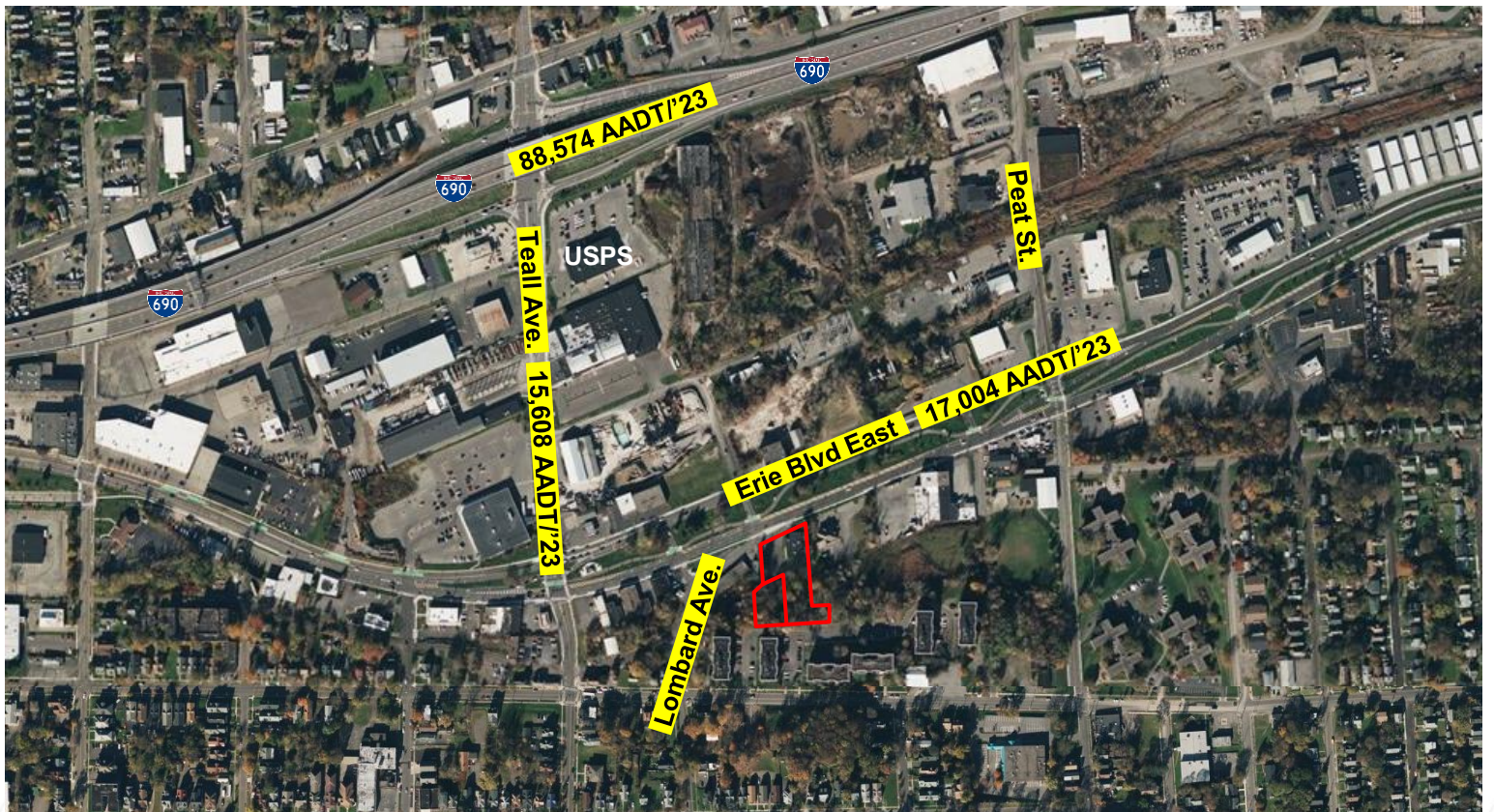
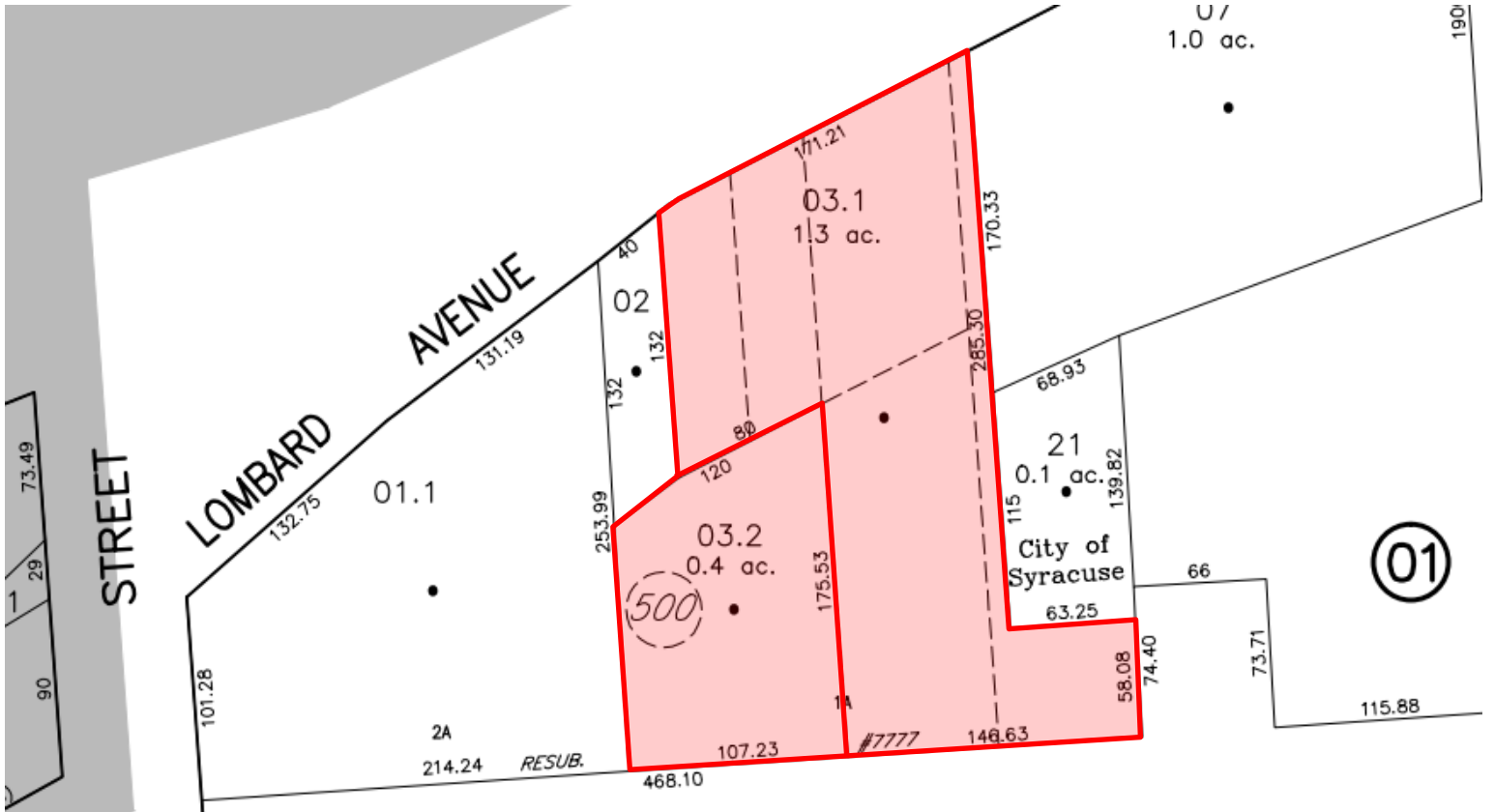
### Contact

**STEPHEN SCUDERI**  
Real Estate Salesperson  
+1 315 445 8517  
sscuderi@pyramidbrokerage.com

5845 Widewaters Pkwy, Suite 200  
East Syracuse, New York 13057  
+1 315 445 1030  
pyramidbrokerage.com

AVAILABLE

1810 Erie Blvd East | Syracuse, New York



AVAILABLE

1810 Erie Blvd East | Syracuse, New York



AVAILABLE

1810 Erie Blvd East | Syracuse, New York

