

2650 SOUTH HANLEY ROAD #300

ST. LOUIS, MO 63143



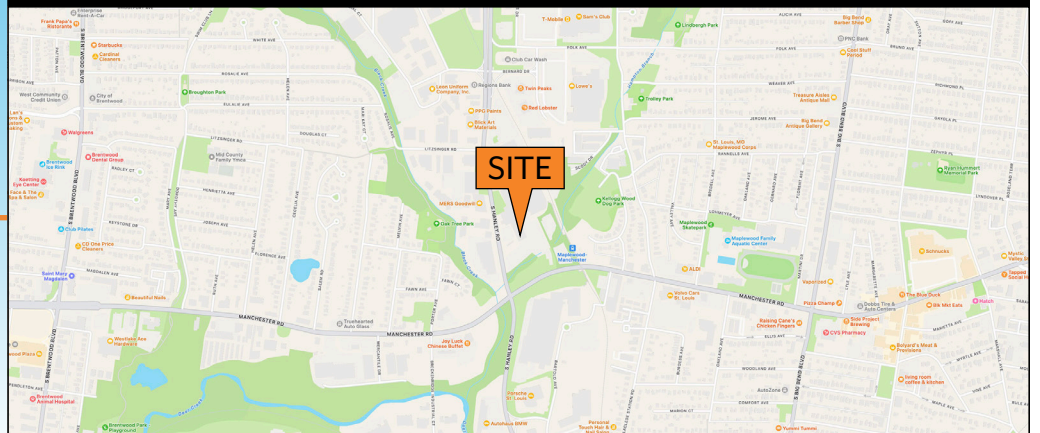
PROPERTY HIGHLIGHTS

- ▶ 4,390 SF Office Space at Hanley Complex
- ▶ Sublease Expiration: July 31, 2026
- ▶ Parking Ratio: 5 per 1,000 SF
- ▶ Adjacent to a MetroLink stop
- ▶ Great central location at Manchester Rd. and Hanley Rd.
- ▶ Easy access to I-44 and I-40
- ▶ Sublease Rate: \$16.95/sf FS

Contact Information

Michael Cozad
(314) 646-3307
mcozad@cozadgroup.com

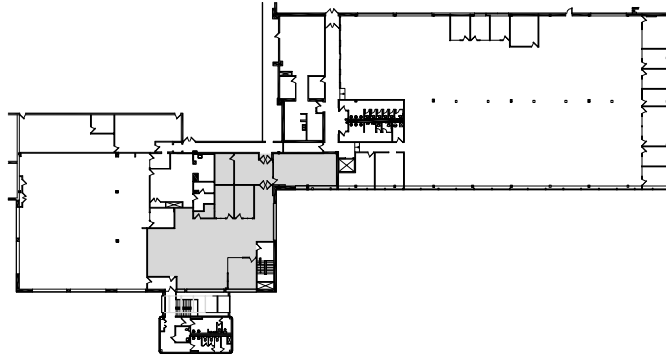
G.T. Cozad, III
(314) 646-3303
gt3@cozadgroup.com



Cozad Commercial Real Estate
MD Real Estate Advisors, LLC
16 Sunnen Drive, Ste. 164
St. Louis, Missouri 63143

2650 SOUTH HANLEY ROAD #300

ST. LOUIS, MO 63143



Information herein has been obtained from the owner of the property or from other sources. The brokers do not guarantee the accuracy of this information. Sellers and brokers make no representation as to the environmental or other conditions of the property and that purchaser investigate fully.

COZAD COMMERCIAL REAL ESTATE
MD REAL ESTATE ADVISORS
A subsidiary of Cozad Commercial Real Estate, Ltd.
16 Sunnen Dr., Ste. 164 • St. Louis, MO 63143