



# HIGH STREET MEDICAL SPACE IN BEVERLY HILLS FOR SUBLEASE (DESIGNER BUILT AND FURNISHED)

421 N. RODEO DRIVE, BEVERLY HILLS, CA 90210



**COMMERCIAL  
ASSET GROUP**

**DANIEL CHIPRUT**

CO-PRINCIPAL

310.275.8222

DANIEL@CAG-RE.COM

LIC. 01808709

**ADAM FUNK**

MANAGING DIRECTOR

310.666.0124

AFUNK@CAGRE.COM

LIC. 02129715



# PROPERTY HIGHLIGHTS



SIZE

**±200 - 1,600 SF**

RATE

**NEGOTIABLE**

LEASE TERMS (UNIT 15)

**PER DAY, PER MONTH, OR YEARLY LEASES**

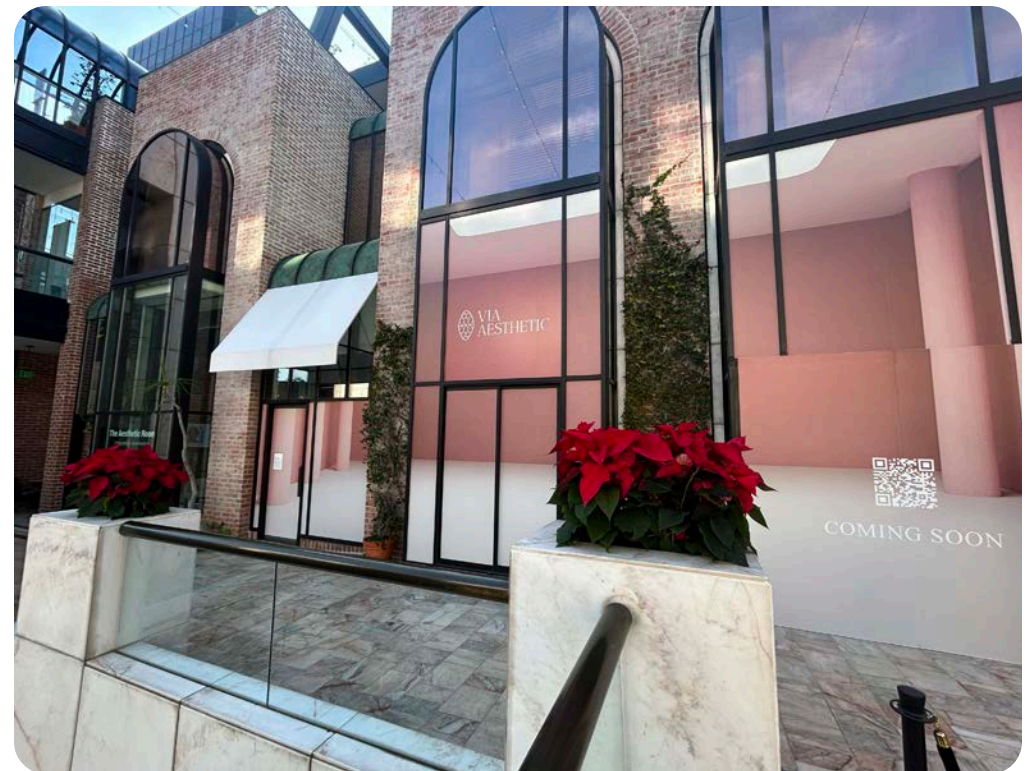
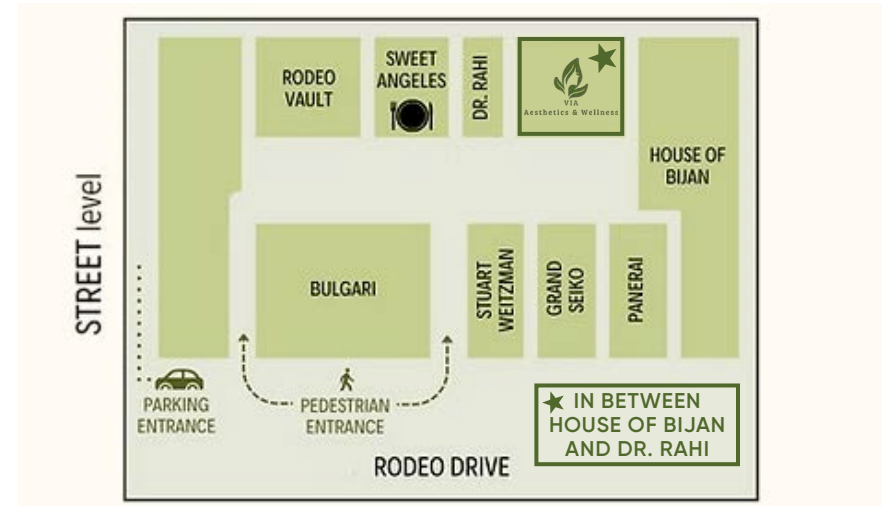
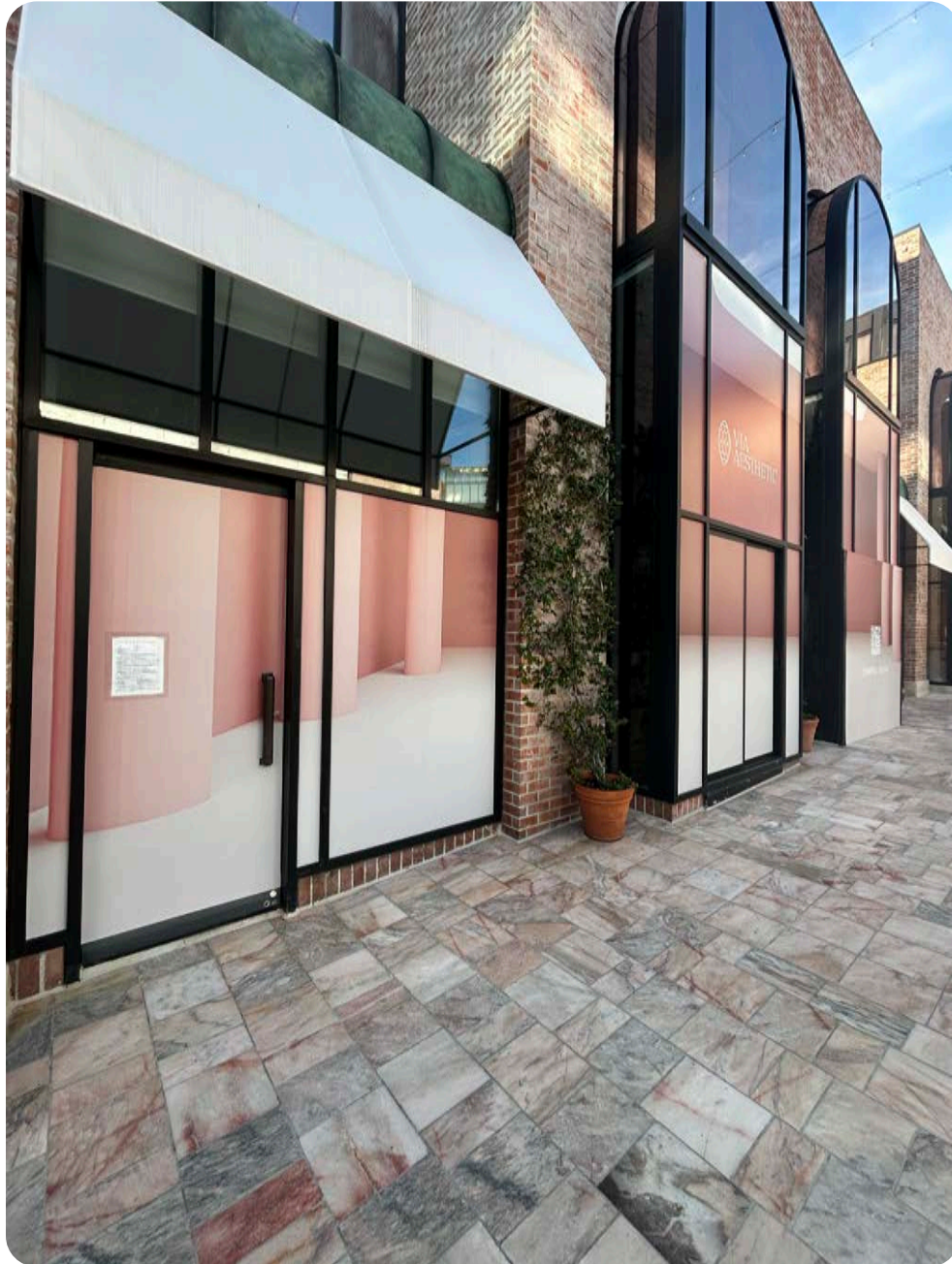


# INTERIOR PHOTOS

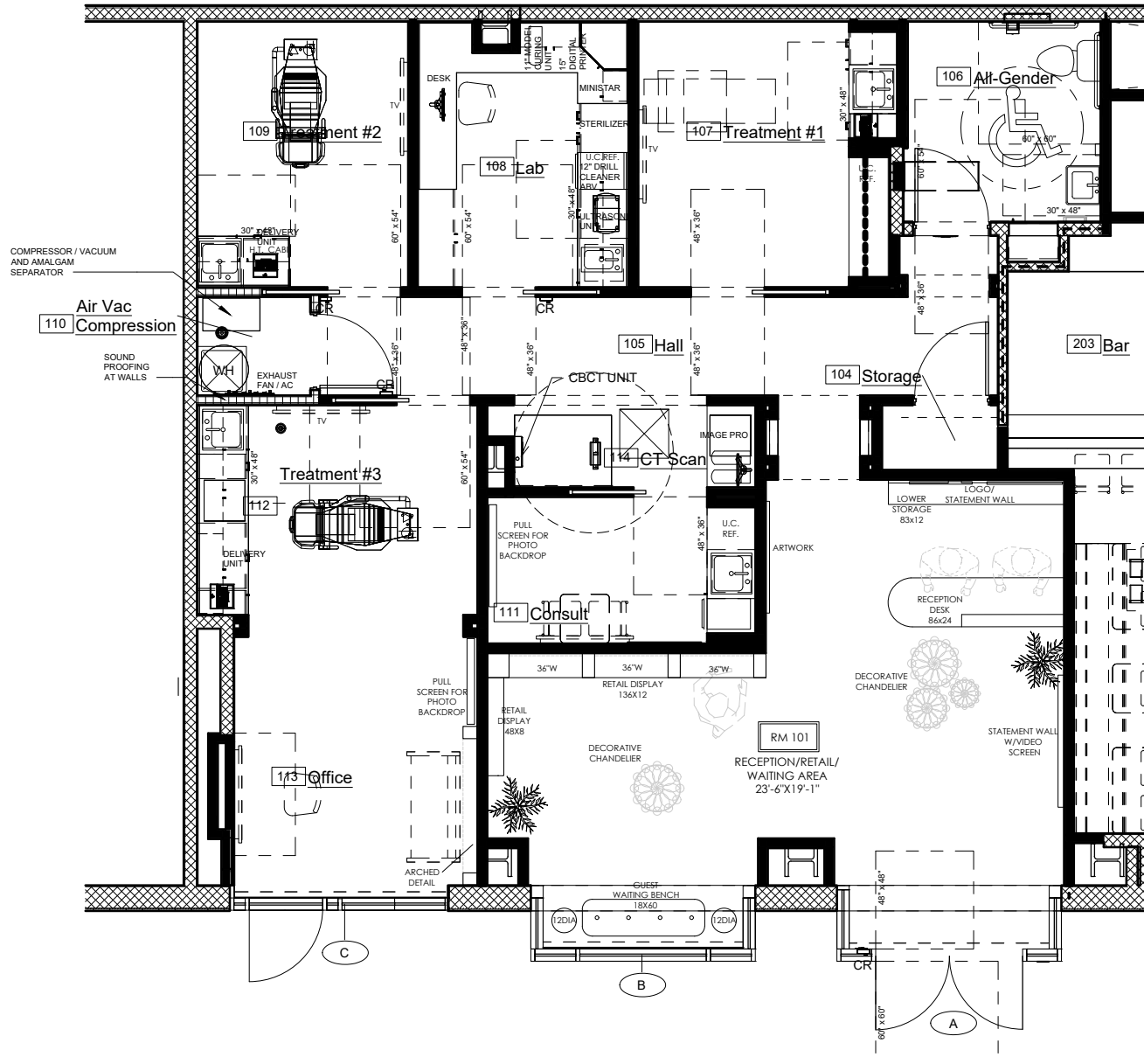




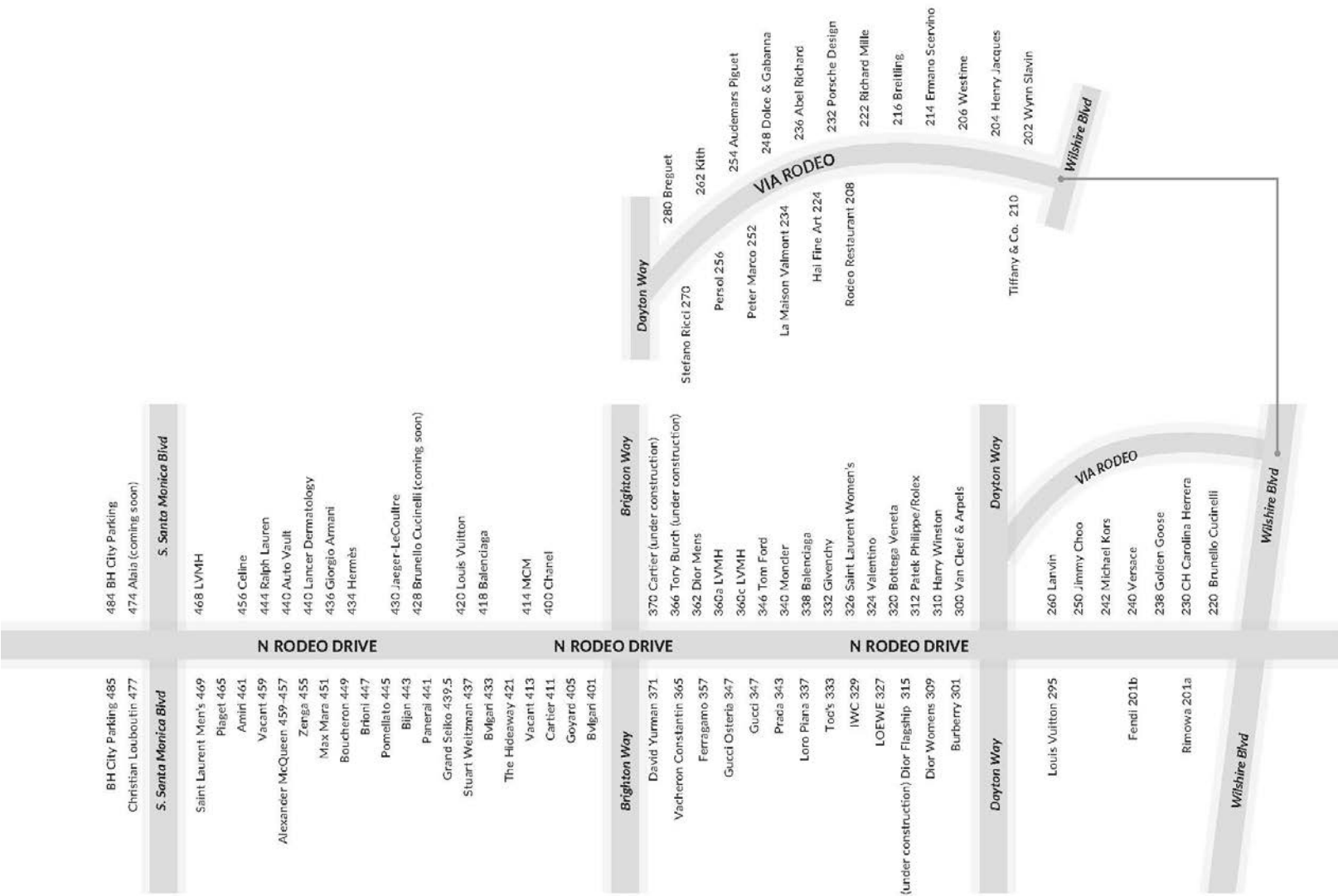
# EXTERIOR PHOTOS



# FLOOR PLAN



# STREET MAP





# AERIAL

---





**DANIEL CHIPRUT**

CO-PRINCIPAL

310.275.8222

DANIEL@CAG-RE.COM

LIC. 01808709

**ADAM FUNK**

MANAGING DIRECTOR

310.666.0124

AFUNK@CAGRE.COM

LIC. 02129715

**COMMERCIAL ASSET GROUP**

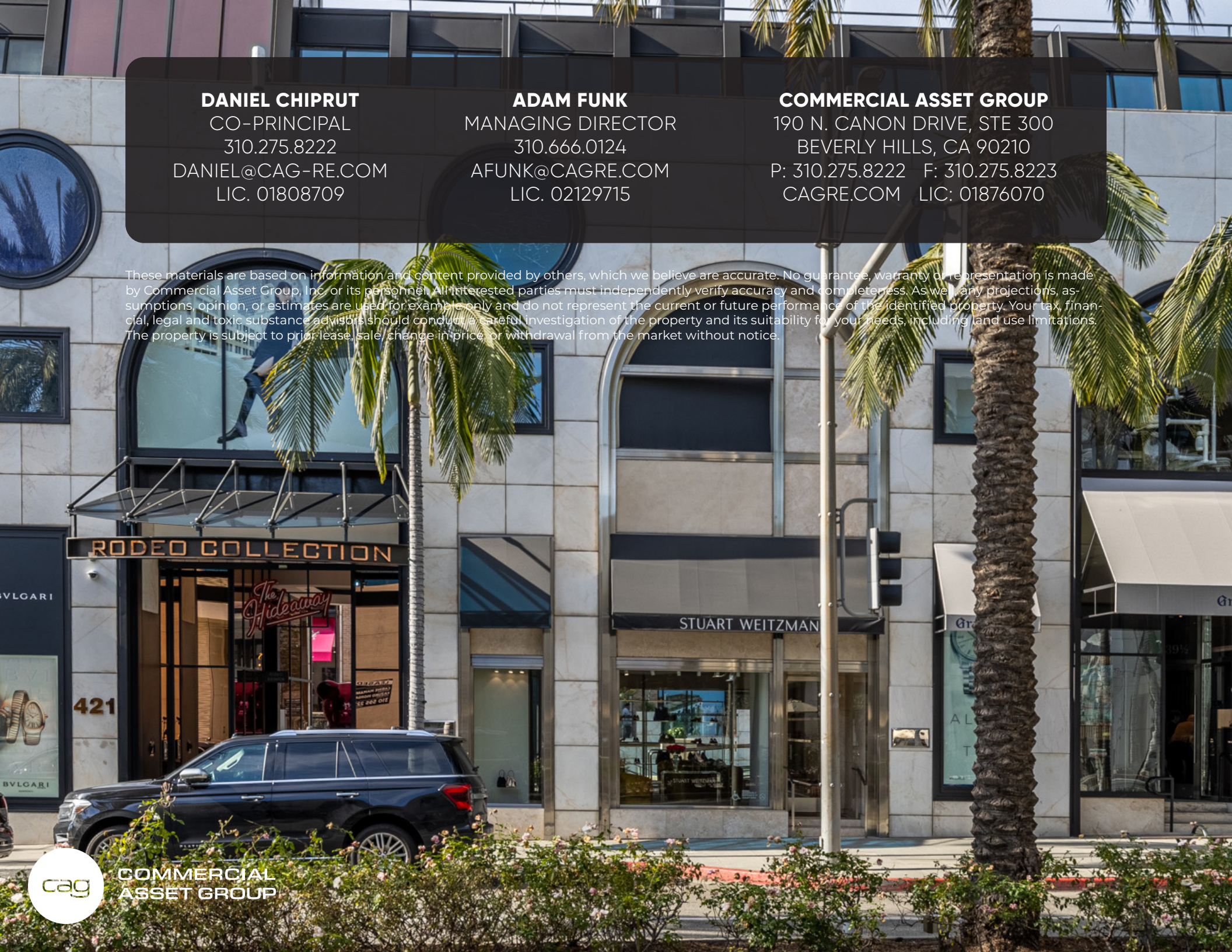
190 N. CANON DRIVE, STE 300

BEVERLY HILLS, CA 90210

P: 310.275.8222 F: 310.275.8223

CAGRE.COM LIC: 01876070

These materials are based on information and content provided by others, which we believe are accurate. No guarantee, warranty or representation is made by Commercial Asset Group, Inc. or its personnel. All interested parties must independently verify accuracy and completeness. As well, any projections, assumptions, opinion, or estimates are used for example only and do not represent the current or future performance of the identified property. Your tax, financial, legal and toxic substance advisors should conduct a careful investigation of the property and its suitability for your needs, including land use limitations. The property is subject to prior lease, sale, change in price, or withdrawal from the market without notice.

**COMMERCIAL  
ASSET GROUP**