



TRI·POINTE

P L A Z A

6365 - 6377 E Tanque Verde Rd

Tucson, AZ 85715



CBRE

Property Features

The map shows the Tri-Pointe Plaza area in Tucson, Arizona, with a yellow circle indicating a one-mile radius. The central location is marked with the Tri-Pointe Plaza logo. Surrounding streets include Glenn St., Grant Rd., Pima St., Sahuar Ave., Speedway Blvd., Tanque Verde Rd., Kolb Rd., and Sabino Canyon Rd. Various commercial establishments are labeled with their logos, including Wendy's, McDonald's, Burger King, Lotte's, Starbucks, Beyond Bread, Lotus Garden, Chipotle, Jersey Mike's, Chick-fil-A, McDonald's, and others. A blue arrow points from the Tri-Pointe Plaza logo to the text 'Daytime amenities within a one-mile radius' at the bottom right.


Daytime amenities within a one-mile radius

-  • Convenient East side location with easy access to Kolb Road going south and Speedway going west and east.
 -  • Variety of lunch and dinner venues within walking distance.
 -  • Tenant improvement dollars available to customize floorplans and finishes to tenant's specifications.
 -  • Office and medical suites available for immediate occupancy.
 -  • Well maintained and groomed landscaping with shaded grass and courtyard areas.
 -  • Excellent parking adjacent to buildings for visitors with covered reserved parking also available.




Available Space




Under 1,000 SF			
Building Number	Suite Number	Floor	Available ±SF
6367	100 B	1st	816
6369	170	1st	858
6375	110	1st	858
6367	50	LL	908
6365	204	2nd	939 
6377	225	2nd	948

1,000 SF to 1,499 SF			
Building Number	Suite Number	Floor	Available ±SF
6367	100 A	1st	1,154
6369	195	1st	1,285
6365	220	2nd	1,289

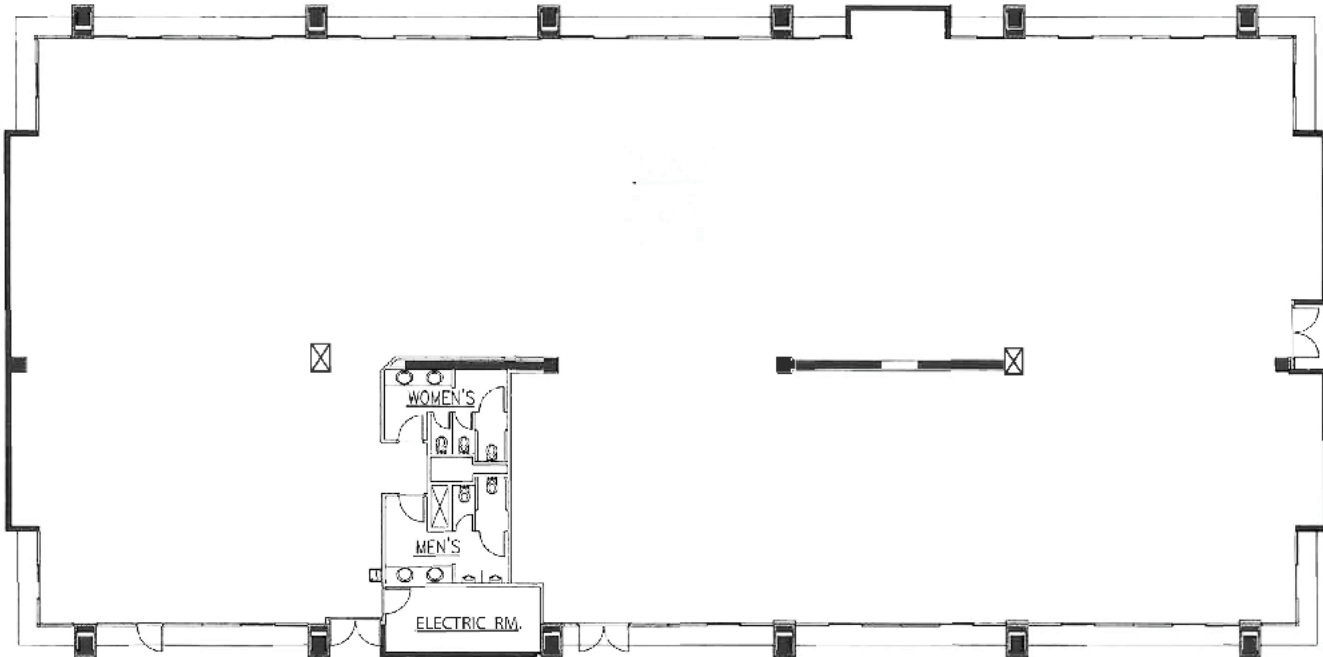
1,500 SF to 2,999 SF			
Building Number	Suite Number	Floor	Available ±SF
6367	30	LL	1,514
6373	280	2nd	1,625
6367	204	2nd	1,606
6365	210	2nd	1,740
6377	210	2nd	1,781
6377	240	2nd	1,823
6367	20	LL	2,026
6367	205	2nd	2,106
6377	205	2nd	2,156
6373	200B	2nd	2,267
6367	200	2nd	2,370
6375	45	LL	2,587

3,000 SF and Over			
Building Number	Suite Number	Floor	Available ±SF
6367	220	2nd	3,466 
6367	200/204/205	2nd	6,082

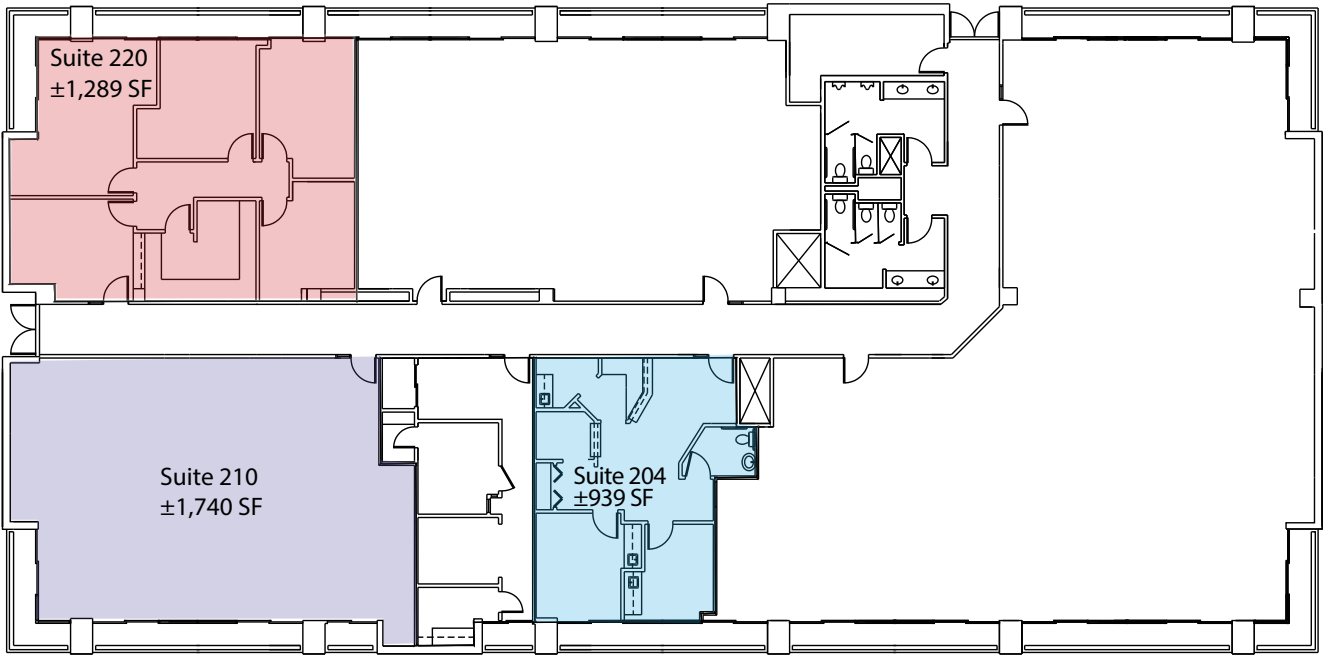
 medical offices

Building 6365 Floor Plan

FLOOR 1



FLOOR 2

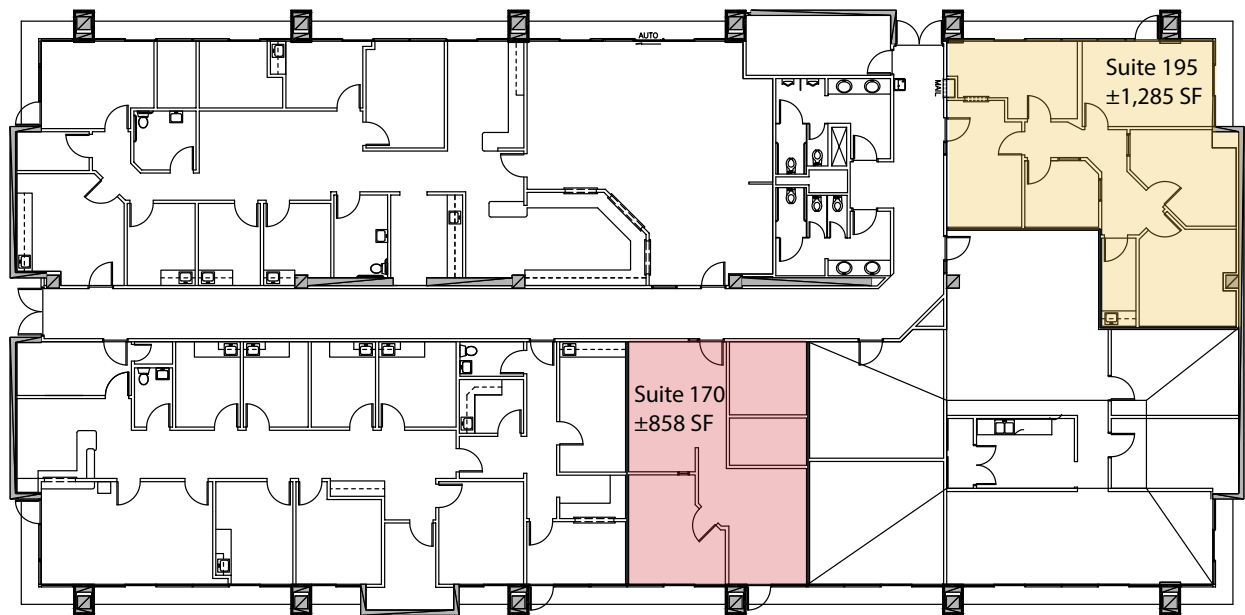


Building 6367 Floor Plan

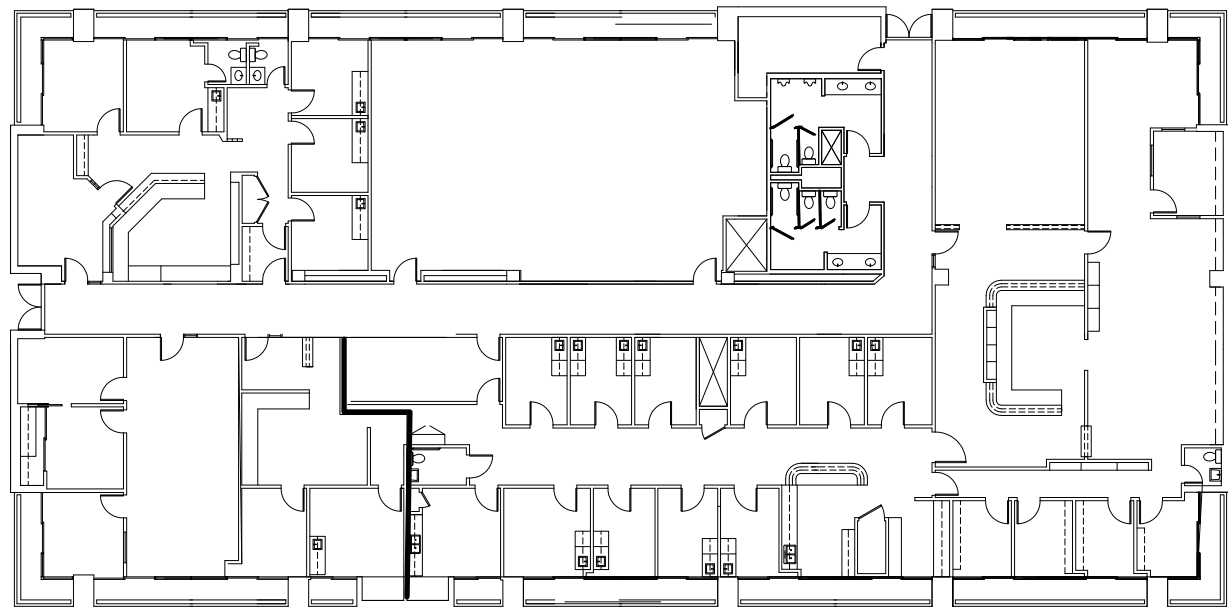


Building 6369 Floor Plan

FLOOR 1

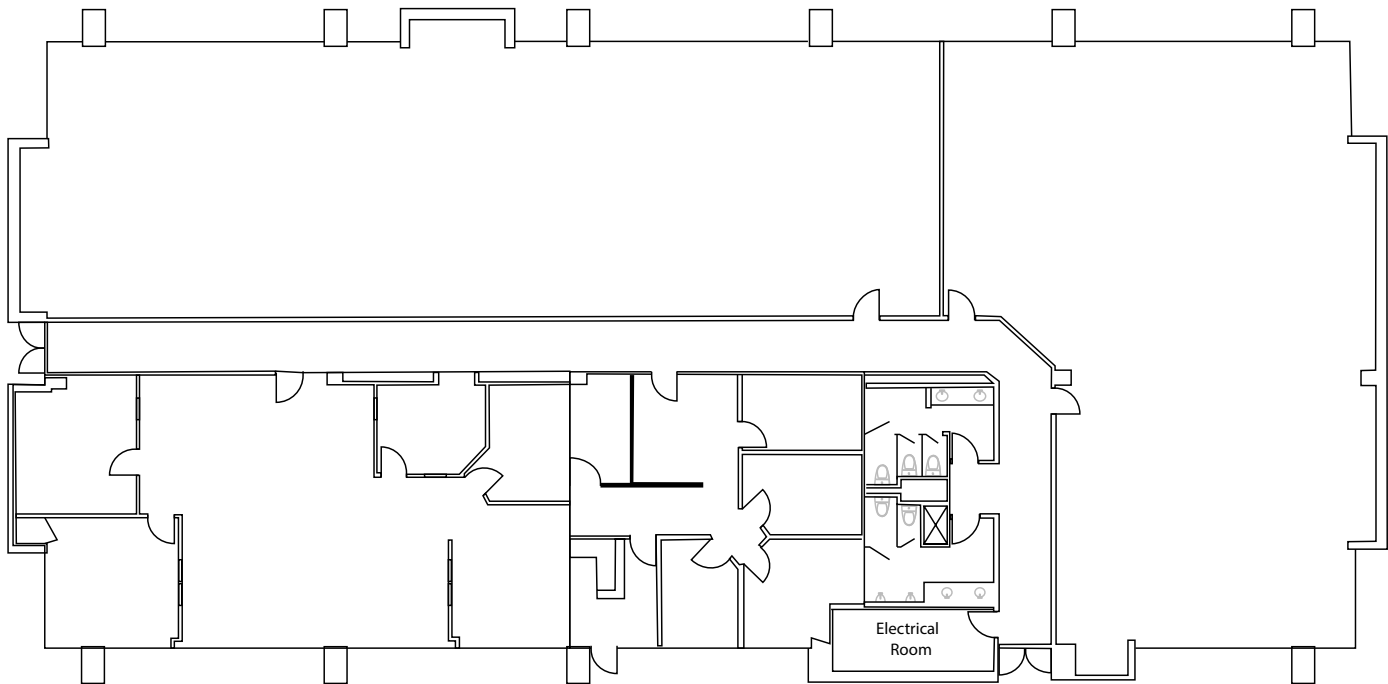


FLOOR 2

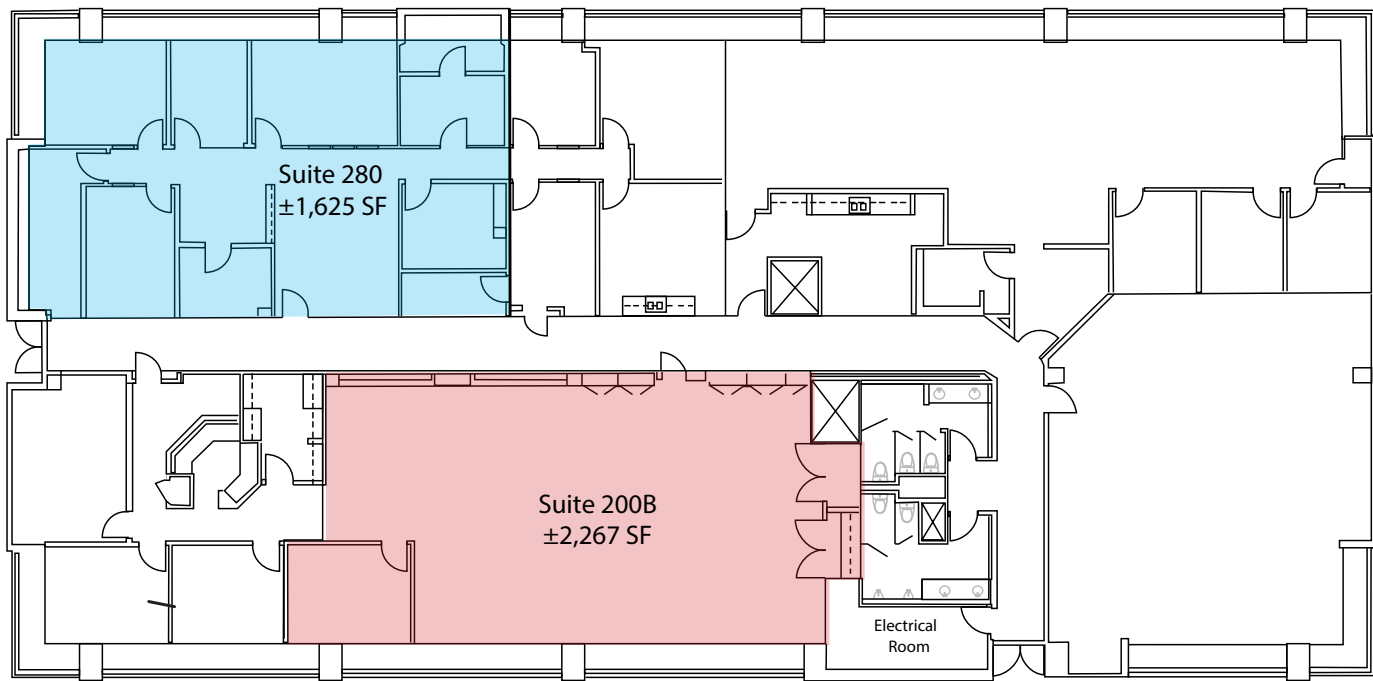


Building 6373 Floor Plan

FLOOR 1

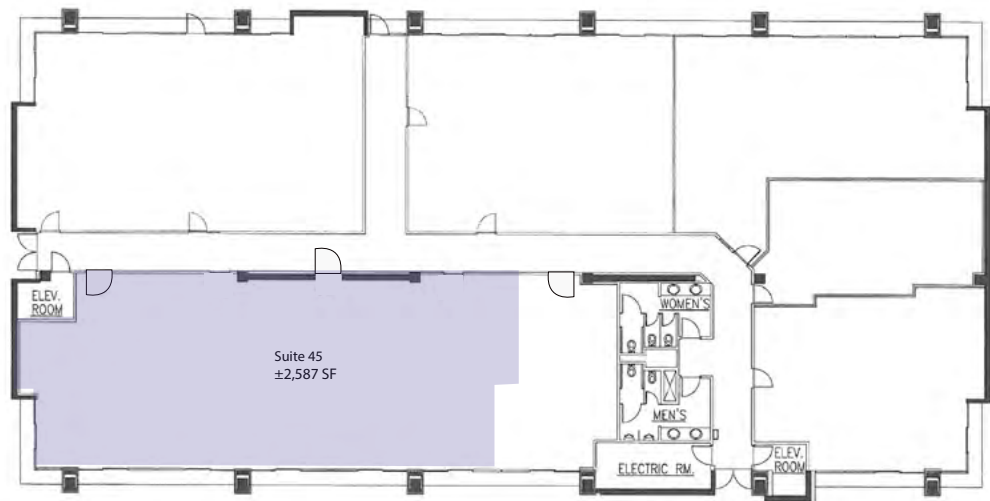


FLOOR 2

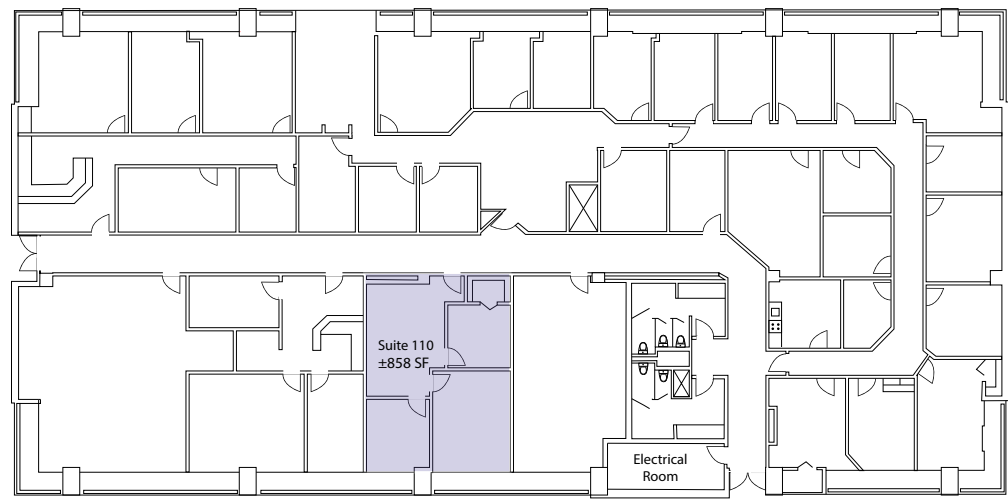


Building 6375 Floor Plan

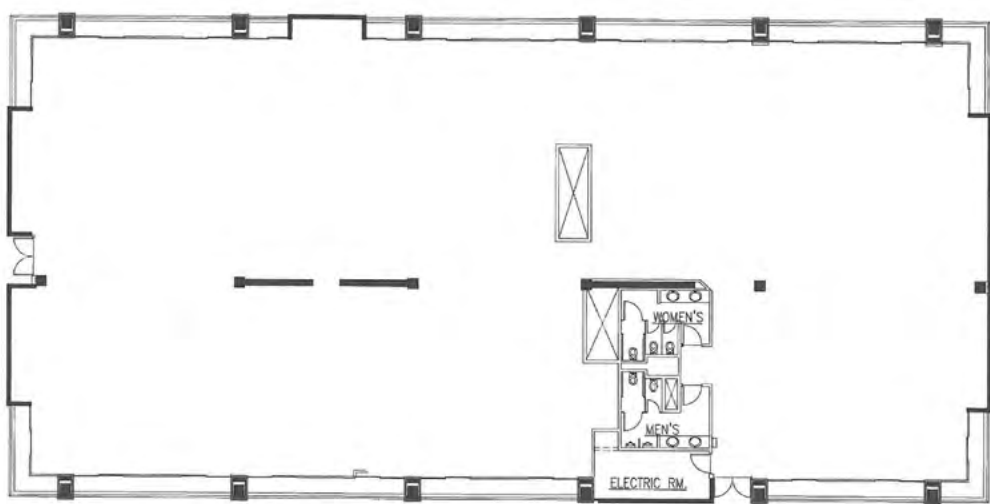
LOWER LEVEL



FLOOR 1

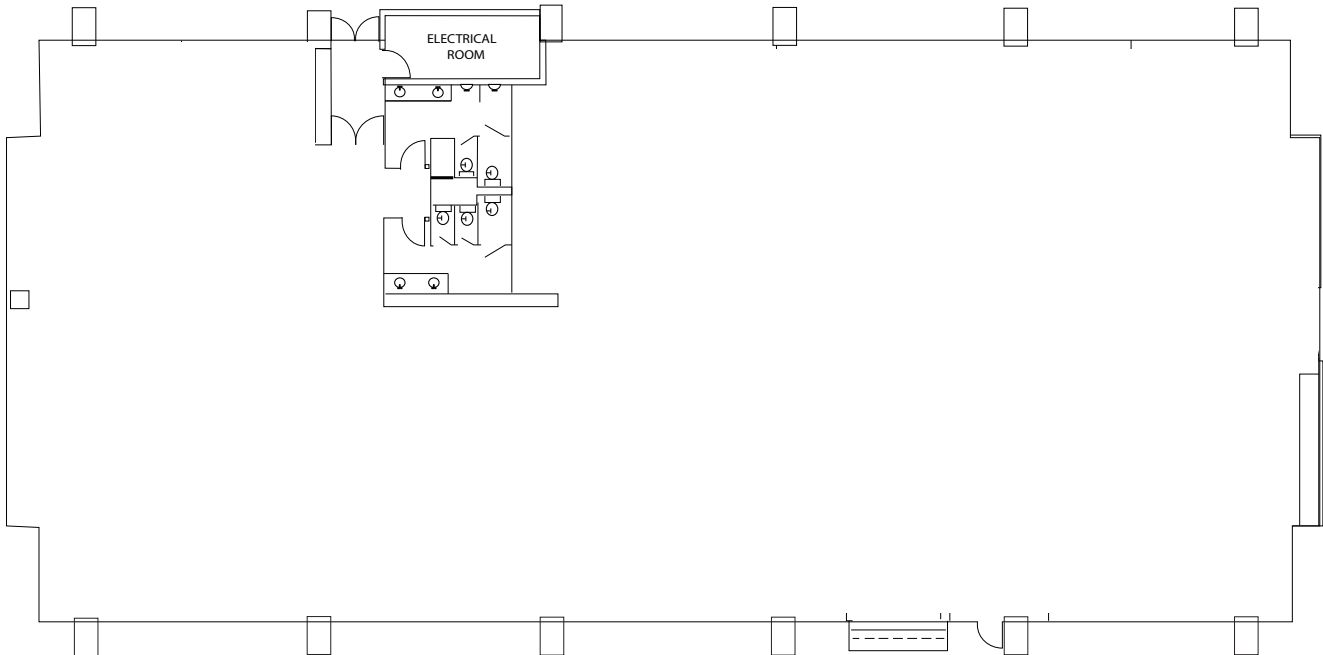


FLOOR 2

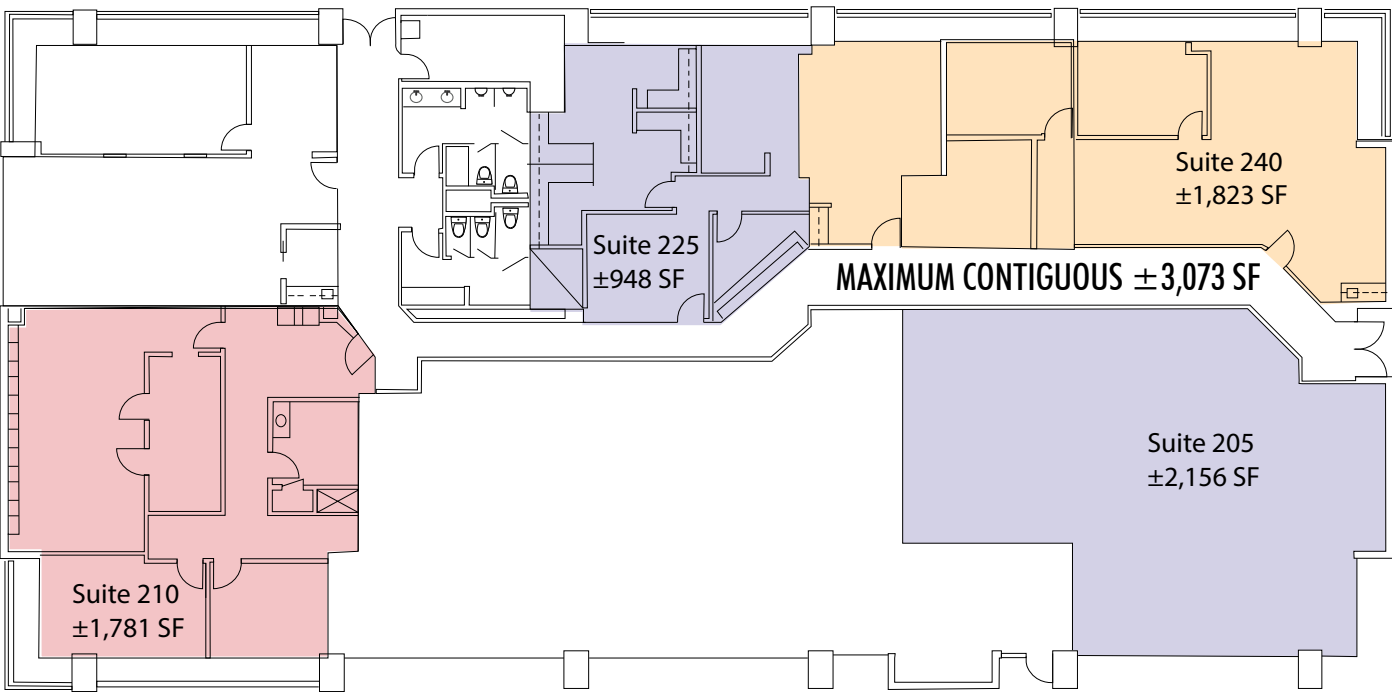


Building 6377 Floor Plan

FLOOR 1



FLOOR 2





CONTACT US

IAN STUART

Vice President

○ +1 520 323 5180

M +1 520 906 5183

ian.stuart@cbre.com

BRUCE SUPPES

Vice President

○ +1 520 323 5155

M +1 520 979 2967

bruce.suppes@cbre.com