



Colliers



# South Bay Professional Building

## Thacher Goodwin

Vice President  
License No. 01758949  
+1 310 321 1821  
thacher.goodwin@colliers.com

## Carter Rudnick

Senior Associate  
License No. 01978170  
+1 310 321 1835  
carter.rudnick@colliers.com

---

2141 Rosecrans Ave, Suite 1120  
El Segundo, CA 90245  
P: +1 310 787 1000  
F: +1 310 787 6869  
colliers.com

# 3655 Torrance Blvd Torrance, CA 90503

## For Lease > Office Spaces

### Property Highlights

- >> Close Proximity to City Hall & Torrance Financial District
- >> Walking distance to Del Amo Mall, restaurants, and other amenities
- >> High identity along Torrance Blvd.
- >> Across the street from Marriott Hotel
- >> Easy Access to 405 Freeway

### Asking Rate

>> \$2.35 per RSF - Full Service Gross

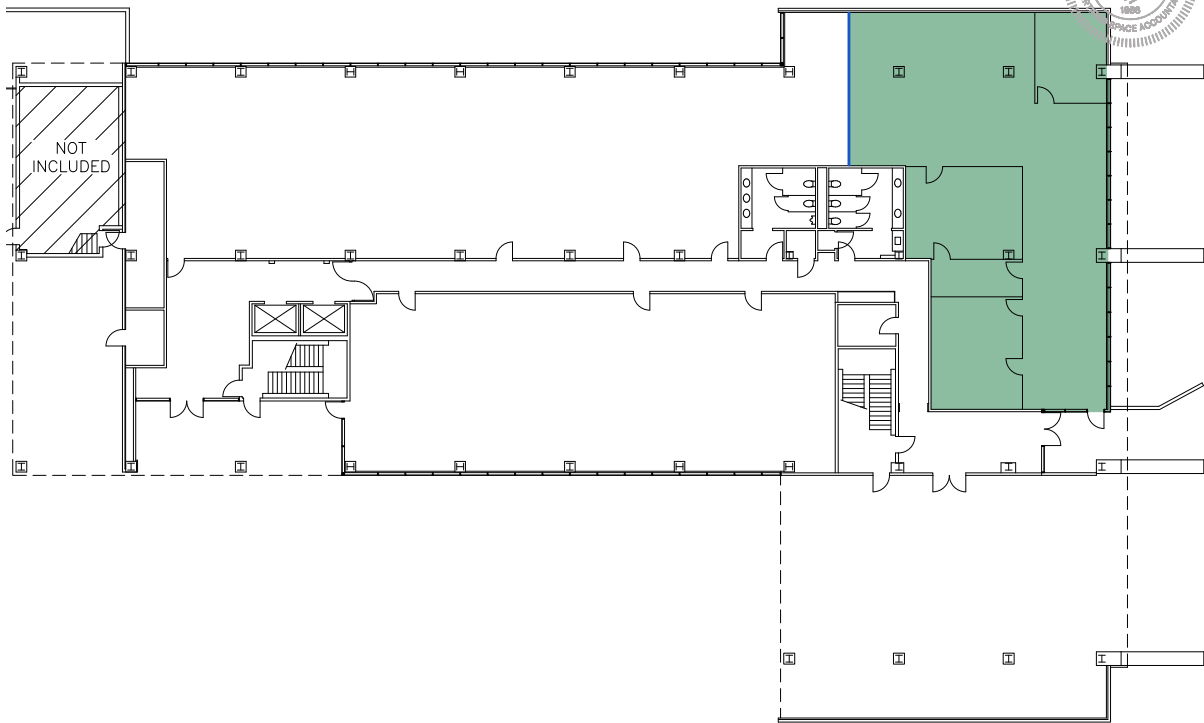
Copyright © 2025 Colliers International. Information herein has been obtained from sources deemed reliable, however its accuracy cannot be guaranteed. The user is required to conduct their own due diligence and verification.

# For Lease

Suite 100	3,124 RSF*
Suite 410	998 RSF*
Suite 435	1,690 RSF* (avail 10/1)
Suite 470	1,028 RSF*

## 3655 TORRANCE BLVD, TORRANCE, CA 90503

### SUITE 100 - 3,124 RSF



#### Thacher Goodwin

Vice President  
 License No. 01758949  
 +1 310 321 1821  
 thacher.goodwin@colliers.com

#### Carter Rudnick

Senior Associate  
 License No. 01978170  
 +1 310 321 1835  
 carter.rudnick@colliers.com

Total USF	SSI RSF
2,856.86	3,123.68

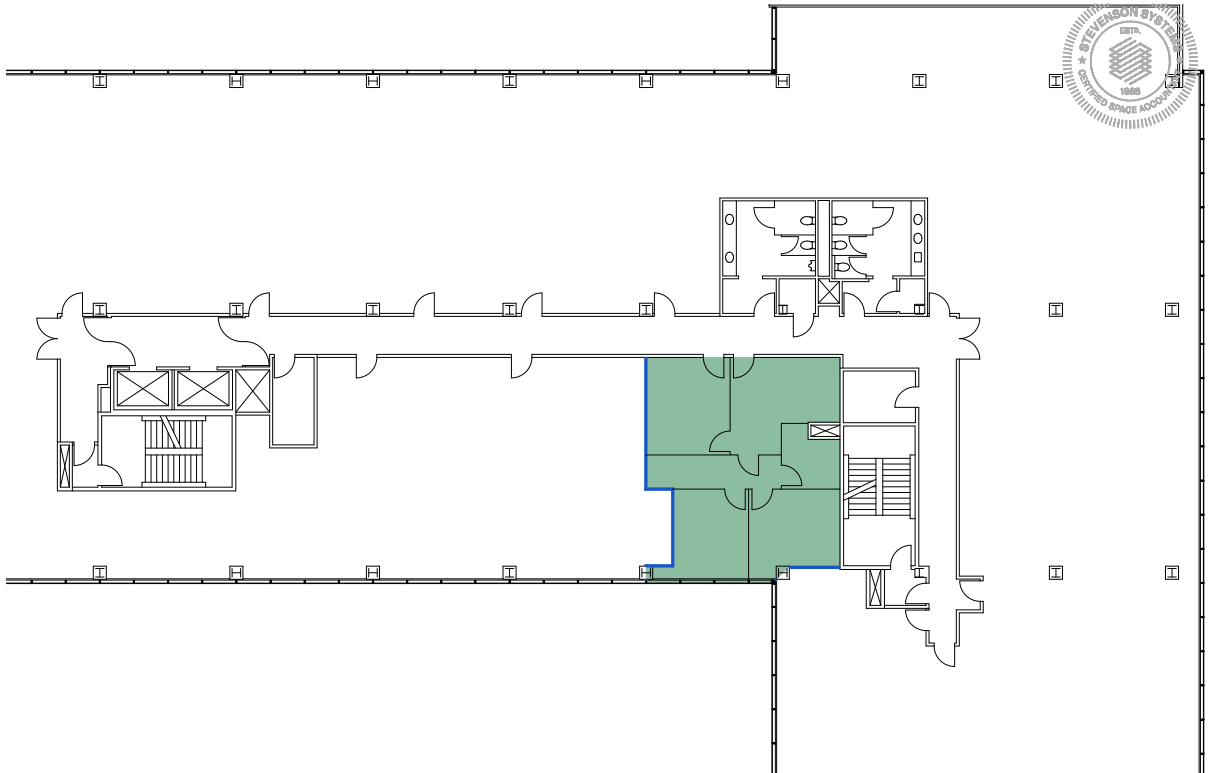


**Stevenson  
Systems**

\* All SF on attached are approximations and subject to Landlord's verifications.

# For Lease

## 3655 TORRANCE BLVD, TORRANCE, CA 90503 SUITE 410 - 998 RSF



**Thacher Goodwin**  
Vice President  
License No. 01758949  
+1 310 321 1821  
thacher.goodwin@colliers.com

**Carter Rudnick**  
Senior Associate  
License No. 01978170  
+1 310 321 1835  
carter.rudnick@colliers.com

Total USF	SSI RSF
862.95	997.99

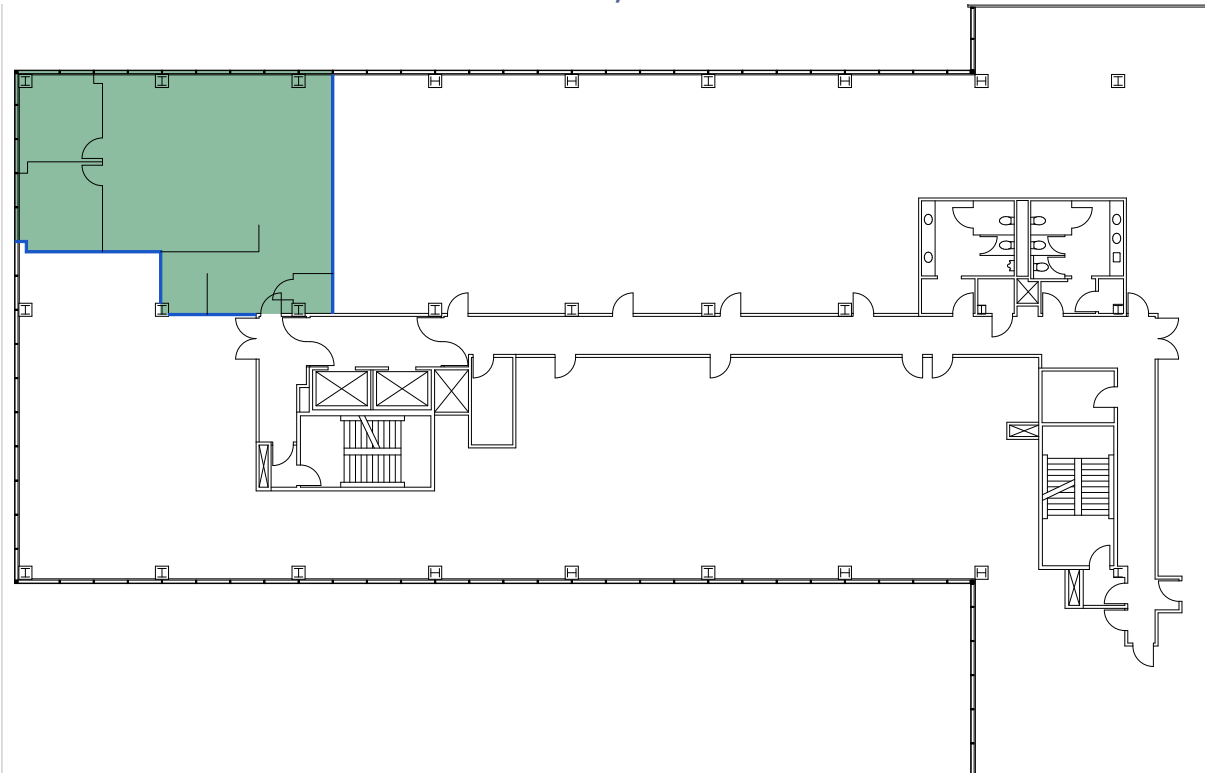


**Stevenson  
Systems**

\* All SF on attached are approximations and subject to Landlord's verifications.

For Lease

**3655 TORRANCE BLVD, TORRANCE, CA 90503**  
**SUITE 435 - 1,690 RSF**



**Thacher Goodwin**

Vice President  
License No. 01758949  
+1 310 321 1821  
thacher.goodwin@colliers.com

**Carter Rudnick**

Senior Associate  
License No. 01978170  
+1 310 321 1835  
carter.rudnick@colliers.com

Total USF	SSI RSF
1,461.07	1,689.71

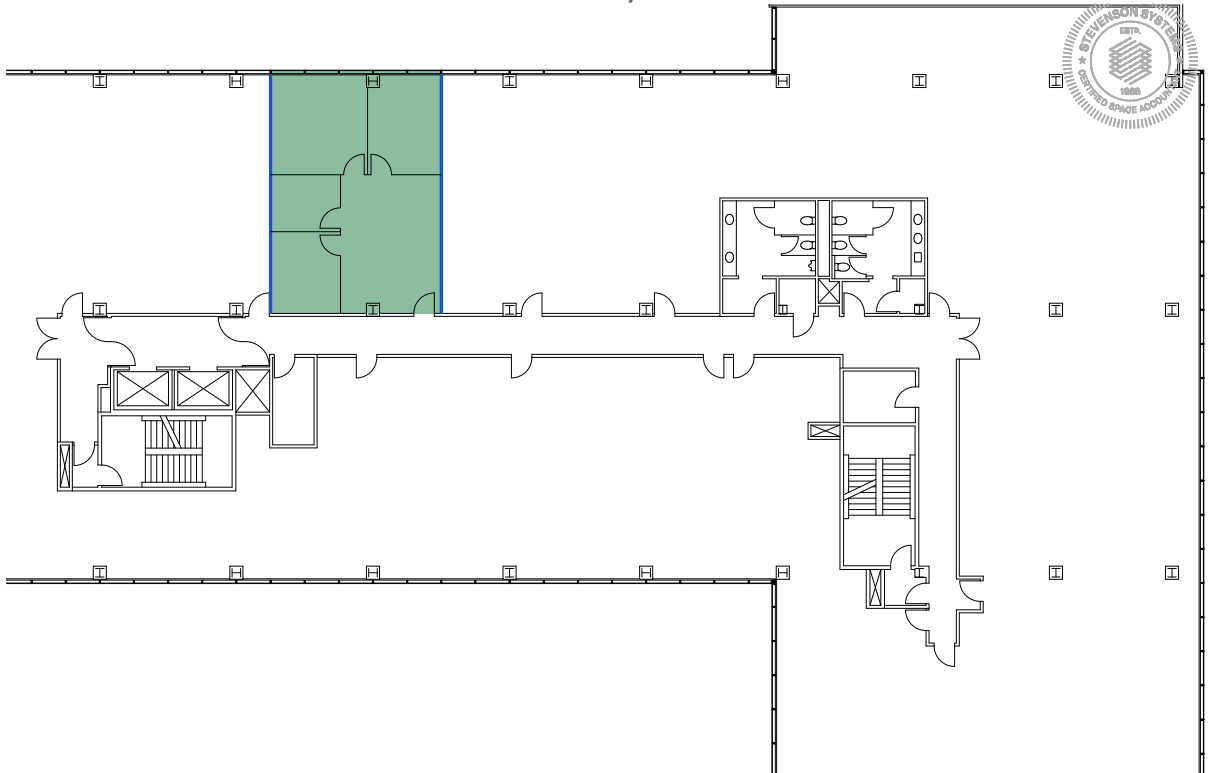


**Stevenson  
Systems**

\* All SF on attached are approximations and subject to Landlord's verifications.

# For Lease

## 3655 TORRANCE BLVD, TORRANCE, CA 90503 SUITE 470 - 1,028 RSF



### Thacher Goodwin

Vice President  
License No. 01758949  
+1 310 321 1821  
thacher.goodwin@colliers.com

### Carter Rudnick

Senior Associate  
License No. 01978170  
+1 310 321 1835  
carter.rudnick@colliers.com

Total USF	SSI RSF
888.80	1,027.88



**Stevenson  
Systems**

\* All SF on attached are approximations and subject to Landlord's verifications.

# Building Standard Finishes and Photos

