



FOR SALE

3020 Carbon Place
Suite 204
Boulder, CO 80301



SIZE
1,828 RSF



SALE PRICE
\$905,000



PRICE PSF
\$495 / SF

FOR SALE

Aaron Evans

303-725-1202

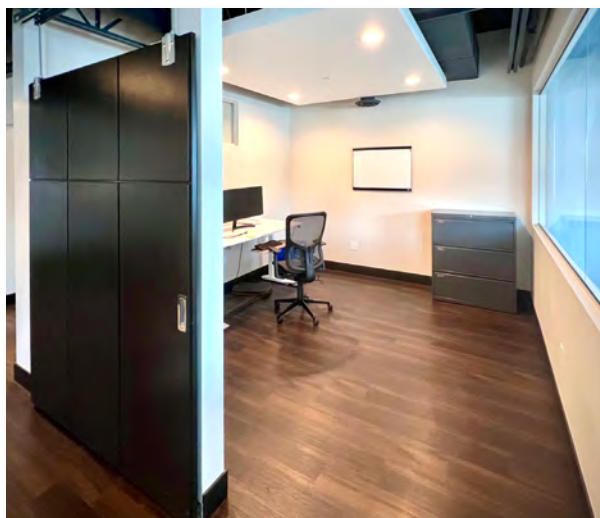
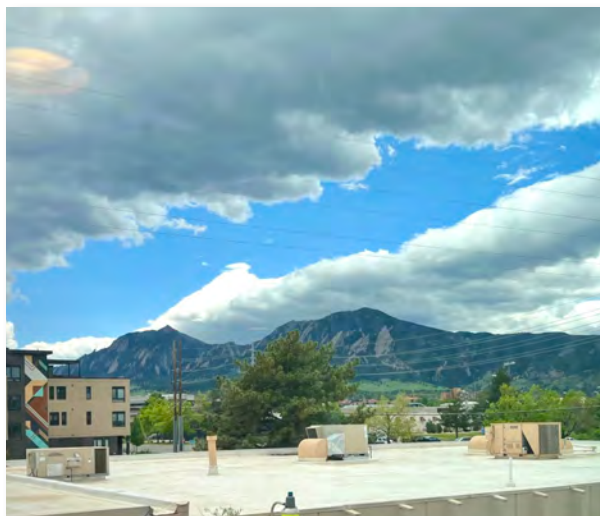
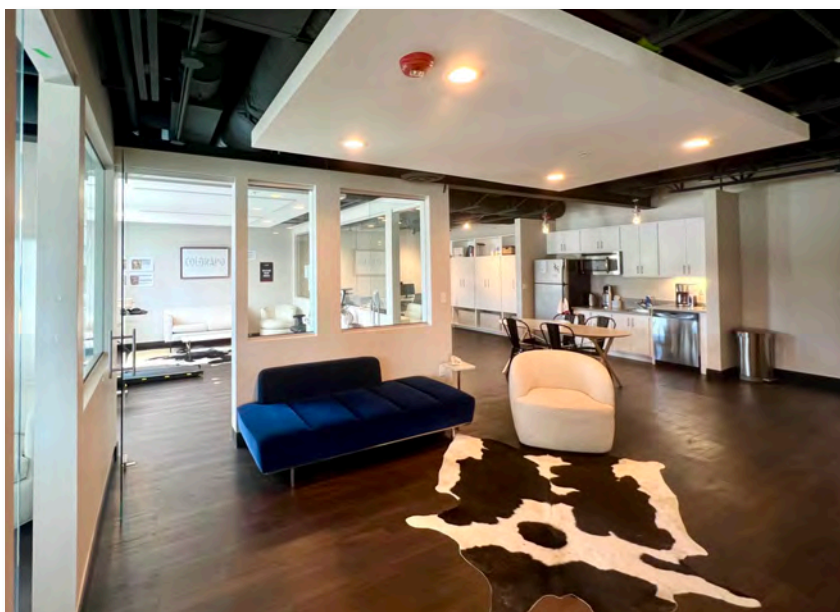
aevans@newoptionpartners.com

Great opportunity to purchase an office condo in The Steel Yards in Boulder. This functional floor plan provides open area, four offices, a conference room, a kitchen and glass partitions that carry lots of natural light throughout the space. Enjoy a great central Boulder location and stunning flatiron views.

- 1,828 RSF
- 3 Parking Spaces
- Estimated Op Ex \$16.82 / SF

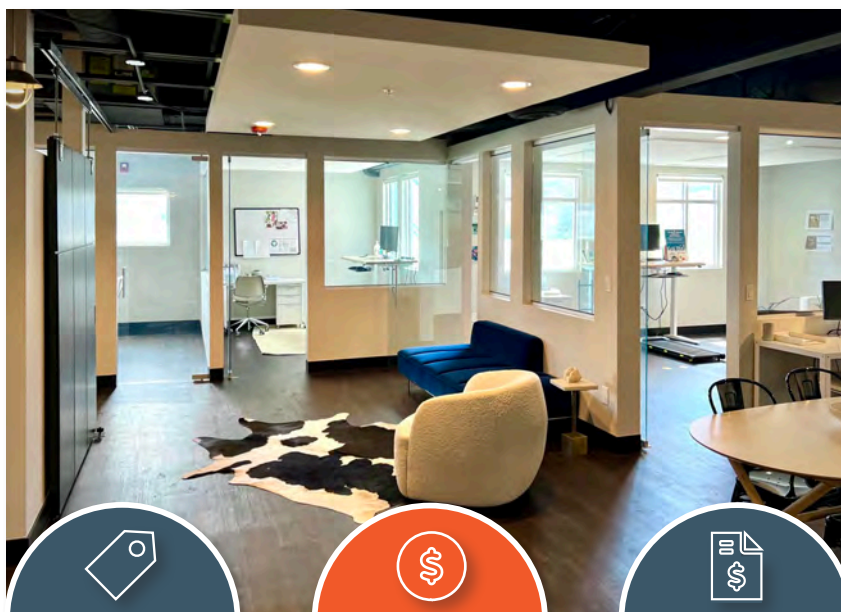
**FOR
SALE**

3020 Carbon Place
Suite 204
Boulder, CO 80301



**FOR
SALE**

3020 Carbon Place
Suite 204
Boulder, CO 80301



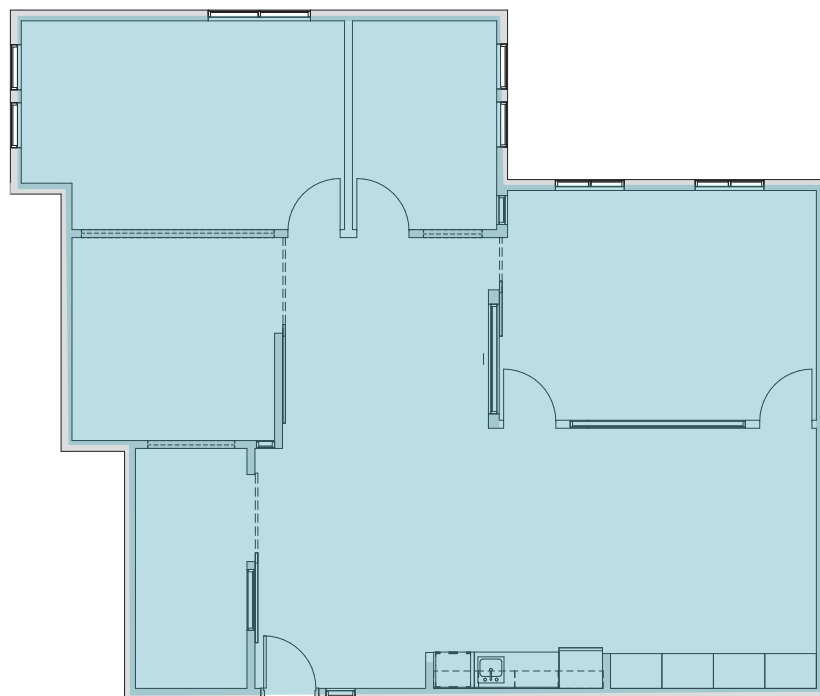
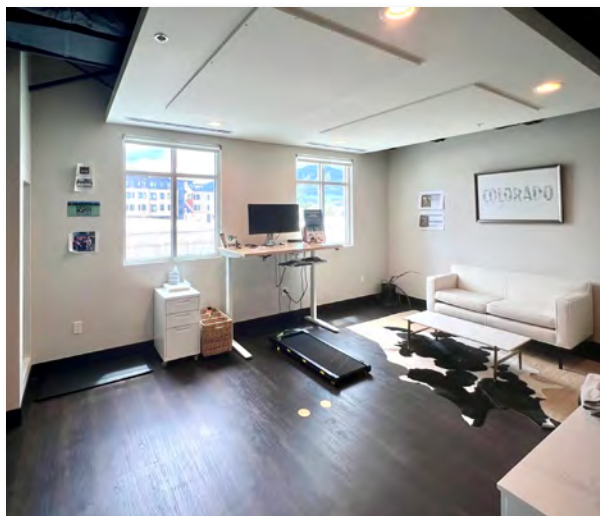
PRICE PSF
\$495 / SF



SALE PRICE
\$905,000



EST. OP EX
\$16.82 / SF



SIZE
1,828 RSF



**3 PARKING
SPACES**



**AVAILABLE
NOW**



newoption
NEW SPACE

1007 Pearl Street | Suite 290
Boulder, CO 80302

303-998-1100

FOR SALE

3020 Carbon Place
Suite 204
Boulder, CO 80301

LOCATION DETAILS

Offering a great central Boulder location near the signalized corner of Pearl Street & 30th Street, 3020 Carbon Place is also easily accessible from either direction and provides direct access to numerous amenities including but not limited to Verb Coffee Roasters, Whole Foods Market, Boulder Depot Restaurant, The RTD Park & Ride and The Goose Creek Bike Path.

