

FOR *SUBLEASE*

HIGH EXPOSURE RETAIL SHOWROOM



PROPERTY INFORMATION

Address: Unit 2117, 239 Griffin Road E
Cochrane, Alberta T4C 2B9

Land Use Zoning: Business Industrial District (I-B)

Availability: Immediately

MLS Number: A21966363

LEASING DETAILS

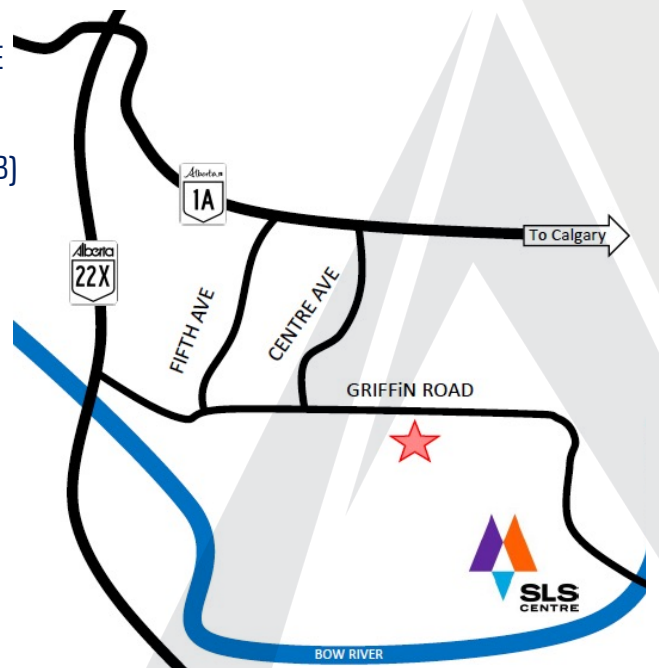
Unit Size: 1,551 square feet (25'W x 62'D)

Lease Rate: \$26.00 psf with yearly escalations

Additional Rent: \$9.91 psf (2025)

Term: To December 2028

Loading: Rear Access Man Door

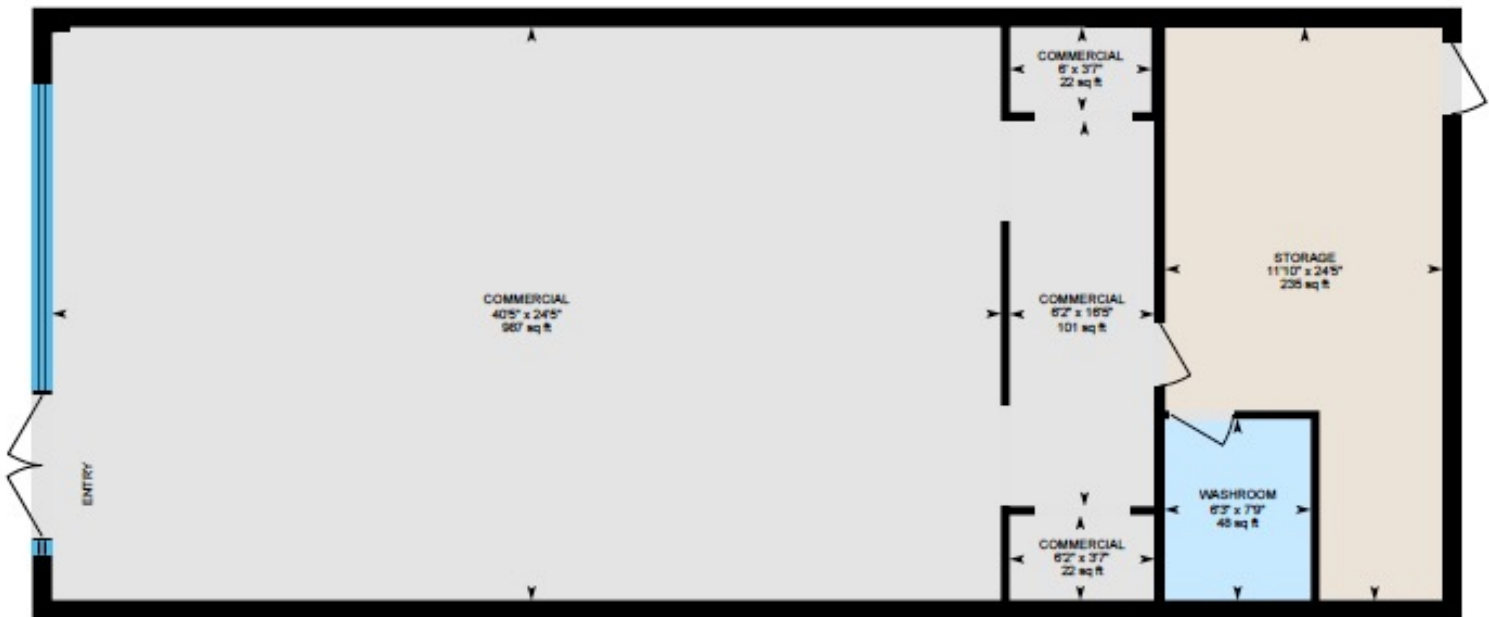


PARAMOUNT
REAL ESTATE CORPORATION

Mike Anisimovicz, President & Broker
Paramount Real Estate Corporation
205, 422 – 11th Avenue SE
Calgary, Alberta T2G 0Y4
403-650-3571
mike@paramountcorp.ca

FOR *SUBLEASE*

GRIFFIN BUSINESS PARK, COCHRANE, ALBERTA



PARAMOUNT
REAL ESTATE CORPORATION

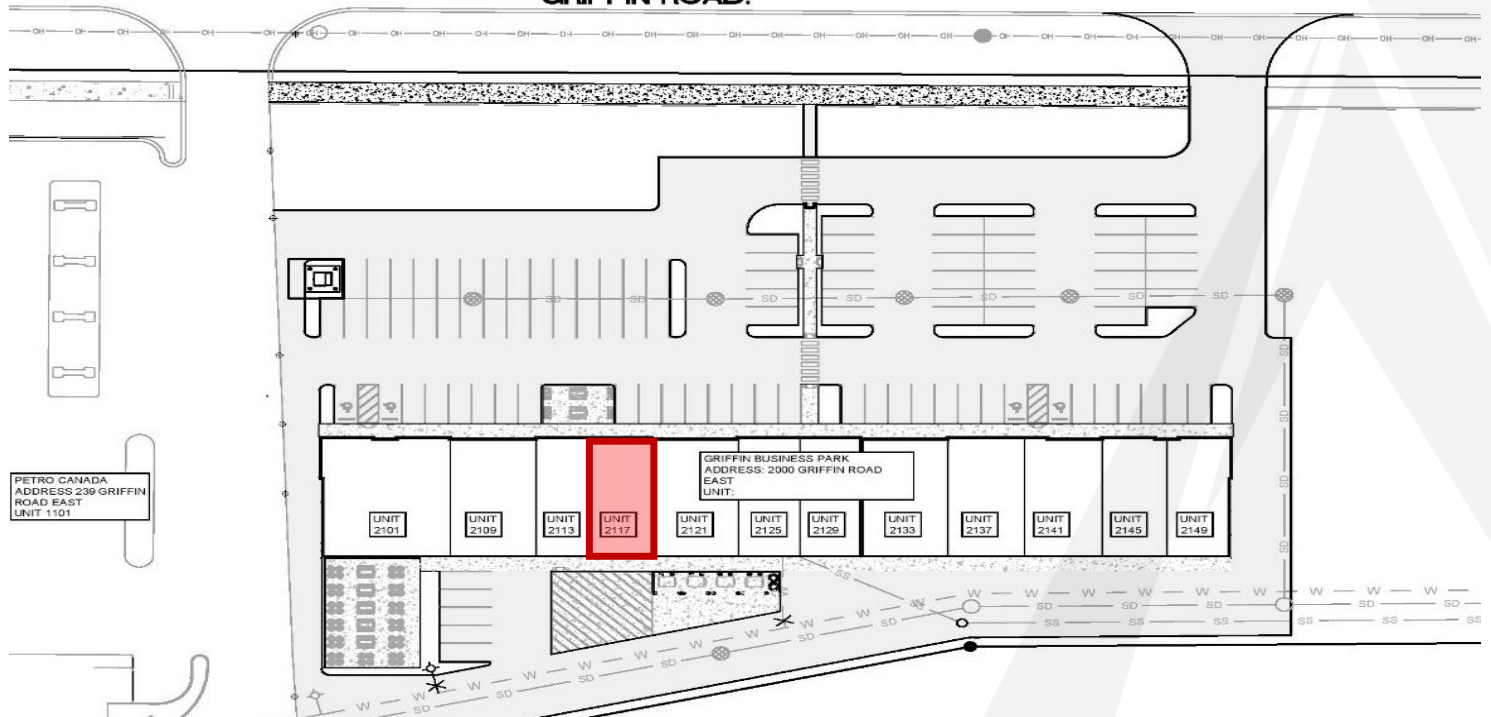
Mike Anisimovicz, President & Broker
Paramount Real Estate Corporation
205, 422 – 11th Avenue SE
Calgary, Alberta T2G 0Y4
403-650-3571
mike@paramountcorp.ca

FOR *SUBLEASE*

GRIFFIN BUSINESS PARK, COCHRANE, ALBERTA



GRIFFIN ROAD.



PARAMOUNT
REAL ESTATE CORPORATION

Mike Anisimovicz, President & Broker
403-650-3571
mike@paramountcorp.ca

Disclaimer: The information contained herein was obtained from sources deemed to be reliable and is believed to be true; however, Paramount Real Estate Corporation makes no guarantees, warranties or representations, expressed or implied, as to the completeness or accuracy thereof. The presentation of this property is submitted subject to errors, omissions, change of price or conditions prior to any sale or lease negotiations. This property is subject to withdrawal of this offering without notice. This document is solely intended for advertising and general purposes only and does not constitute an offer or the solicitation of any offer to purchase or lease the property. Any interested party who requires further information or verification of fact shall be responsible to conduct their own independent review of the property.