

6150-6200 E. HIGHWAY 66  
EL RENO, OK 73036

OKC West Industrial Complex For Sale

40,715 SF on 44.342 Acre MOL

\$9,800,000

NAIRED

COMMERCIAL  
REAL ESTATE



NAIRED

405.840.0600  
NAIRED.COM

BOB SULLIVAN, CCIM  
405.641.9798  
RSULLIVAN@CCIM.NET

CLARK EVERETT  
405.985.8424  
CLARK@NAIRED.COM



## PROPERTY HIGHLIGHTS

- Warehouse-16,000 SF
- Bulk Mixing Plant-11,960 SF
- Lab Building-6,250 SF
- C1D1 Building-4,032 SF
- Wash Building-1,456 SF
- Small Office Building-1,017 SF
- 2 Oil/Water Separators
- Warehouse has Full Containment Design
- Approximately 14 Acres of Reinforced Concrete
- Zoned: I-3, Heavy Industrial

**NAIRED**

**405.840.0600**  
**NAIRED.COM**

**BOB SULLIVAN, CCIM**  
405.641.9798  
RSULLIVAN@CCIM.NET

**CLARK EVERETT**  
405.985.8424  
CLARK@NAIRED.COM



NAI Red is pleased to present OKC West Industrial Park in El Reno, Oklahoma. Twenty miles west of Oklahoma City, fronting on Interstate 40 and Route 66, OKC West Industrial Park was originally built by Halliburton Oil Field Services in 2015 and expanded in 2018 as a field camp for their frac operations and fleet maintenance.

6150 E. Highway 66 features unique industrial assets, abundant heavy-duty concrete, and land for expansion. This state-of-the-art facility has six buildings totaling 40,715 SF on 44.342 acres, and includes approximately 14 acres of 8-inch, 4,000 psi reinforced concrete.

- Laboratory building: 6,250 SF includes office space, a training room and laboratory infrastructure.



**NAIRED**

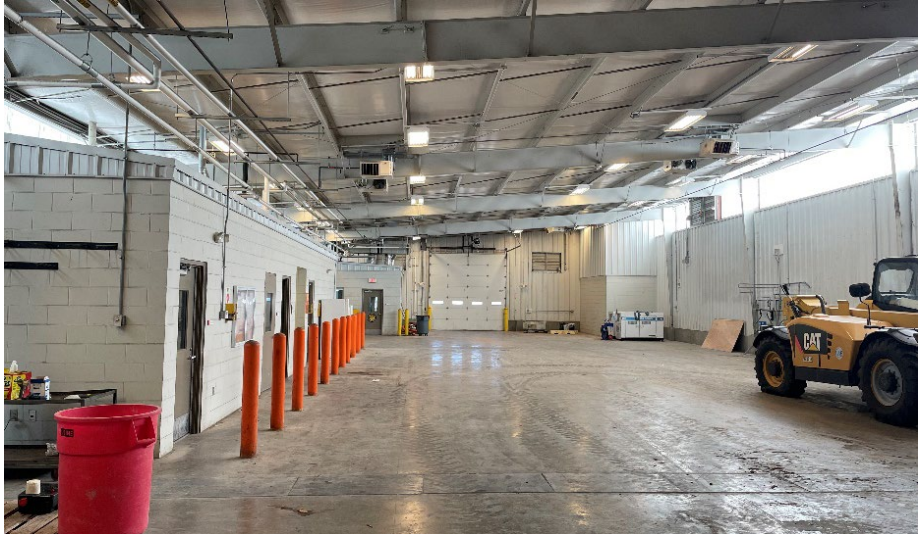
**405.840.0600**  
**NAIRED.COM**

**BOB SULLIVAN, CCIM**  
405.641.9798  
RSULLIVAN@CCIM.NET

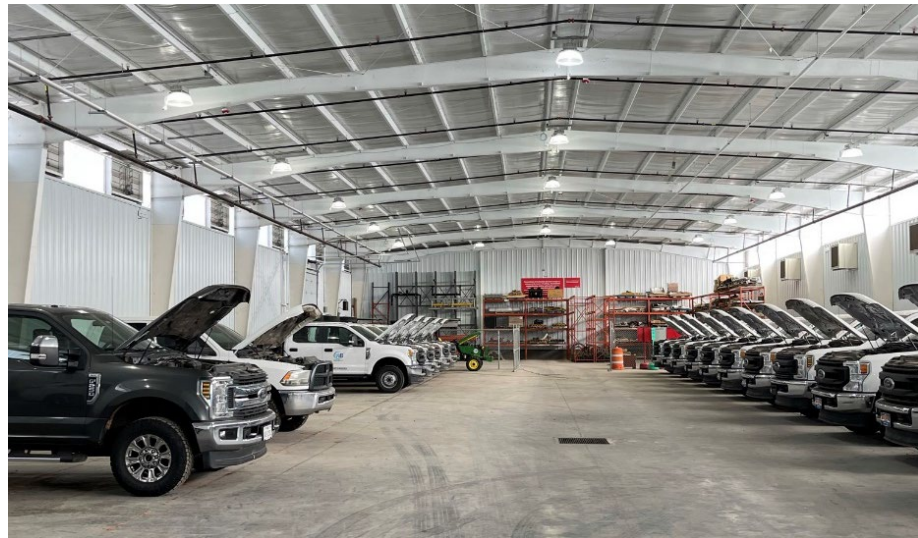
**CLARK EVERETT**  
405.985.8424  
CLARK@NAIRED.COM



- Bulk mixing plant: 11,960 SF bulk mixing plant could be used for mixing aggregates or other materials (silos sold separately) or could be repurposed to warehouse space with drive-through doors and office space.



- Warehouse: 16,000 SF warehouse features a full-containment design.



- Explosive-proof loading building: 4,032 SF C1D1 building houses a 2-ton bridge crane and two air compressors.



**NAIRED**

**405.840.0600**  
**NAIRED.COM**

**BOB SULLIVAN, CCIM**  
405.641.9798  
RSULLIVAN@CCIM.NET

**CLARK EVERETT**  
405.985.8424  
CLARK@NAIRED.COM



- Wash building: 1,456 SF  
wash building was designed for washing heavy equipment such as fork lifts, but could be potentially repurposed for other uses such as a paint booth.



- Small office building: 1,017 SF  
small office building receives the networking infrastructure for this parcel.



This Class-A industrial property is a perfect solution for fleet maintenance purposes, oil field services, or could be easily repurposed for manufacturing. Over 12 acres of land is suitable for expansion/development.

**NAIRED**

405.840.0600  
NAIRED.COM

BOB SULLIVAN, CCIM  
405.641.9798  
RSULLIVAN@CCIM.NET

CLARK EVERETT  
405.985.8424  
CLARK@NAIRED.COM



DEMOGRAPHICS

	1 MILE	3 MILE	5 MILE
POPULATION	132	1,192	14,988
AVERAGE HOUSEHOLD INCOME	\$87,202	\$79,171	\$63,471
TOTAL HOUSEHOLDS	48	431	5,661



405.840.0600

NAIRED.COM

FOLLOW US @NAIRED\_CRE



No warranty or representation, express or implied, is made as to the accuracy of the information contained herein, and the same is submitted subject to errors, omissions, change of price, rental or other conditions, prior to sale, lease, or financing, or withdrawal without notice, and of any special listing conditions imposed by our principals no warranties or representations are made as to the condition of the property or any hazards contained therein are any to be implied.