

FOR SALE OR LEASE

Freestanding Building or Redevelopment Site



Former UMB Bank Building 20652 W. 151st Street, Olathe, Kansas



Estimated Population
134,079

Average Household Income
\$94,686

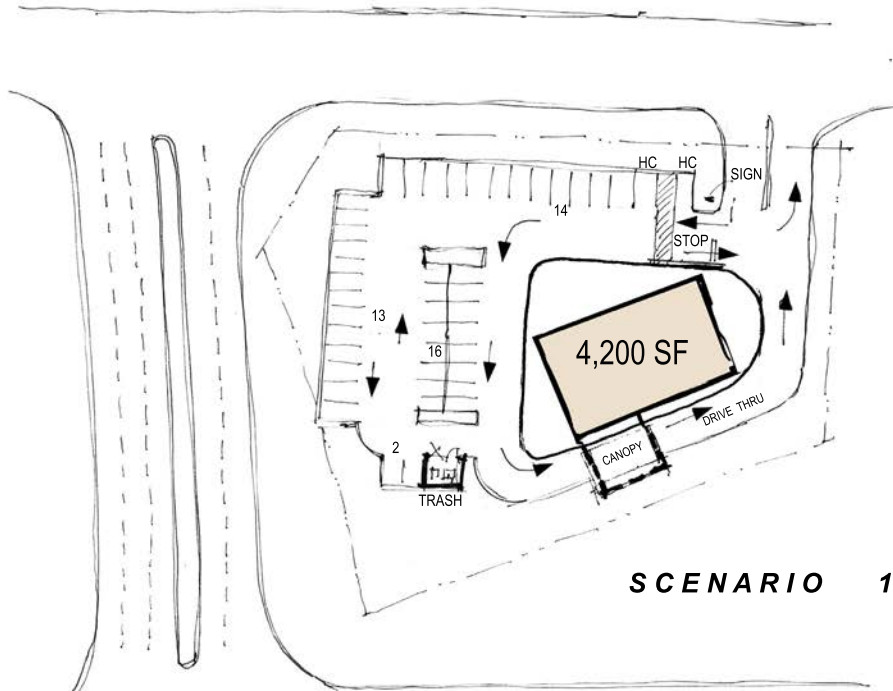
Five Mile Radius

- Corner site at lighted intersection
- Existing building available or site could be redeveloped, ground leased, or built-to-suit
- 3,553 sq ft building on 1.15 acres of land
- Adjacent to Olathe Medical Center, currently undergoing a \$100 million expansion
- Potential for medical, office, retail, or restaurant use
- Prime Johnson County Location
- Garmin International Headquarters less than two miles away (3,500 employees), currently undergoing a \$200 million expansion

BLOCK & COMPANY, INC., Realtors 816.753.6000
In the Skelly Building on the Country Club Plaza
605 West 47th Street, Suite 200, Kansas City, Missouri 64112

For Information Contact:

Mark McConahay 816.412.7386
mmcconahay@blockandco.com
David Block 816.412.7400
dblock@blockandco.com



SCENARIO 1

Tabulation of Areas

Site Area +/- 1.0 acres
 Building Area 4,200 sf
 Parking provided 45 cars



Location Map

September 7 2017

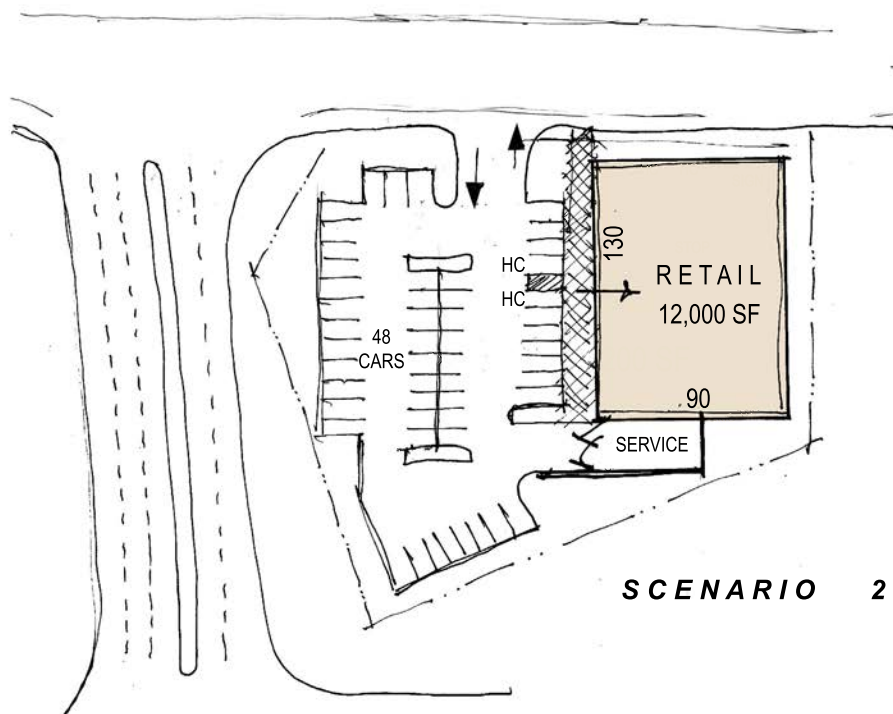
D R A F T

The KRAUSZ COMPANIES, Inc.

Krausz GM Out Parcels LLC
 44 Montgomery St., Suite 3200, San Francisco, CA 94104 | Tel. 415.732.6000

STOUTENBOROUGH

Architects and Planners
 400 81st Street, Suite 100, Olathe, MO 66061 | Tel. 913.251.2221 | Fax 913.251.2224 | www.stoutenborough.com



SCENARIO 2

Tabulation of Areas

Site Area +/- 1.0 acres
 Building Area 12,000 sf
 Parking provided 48 cars



Location Map

September 7 2017

D R A F T

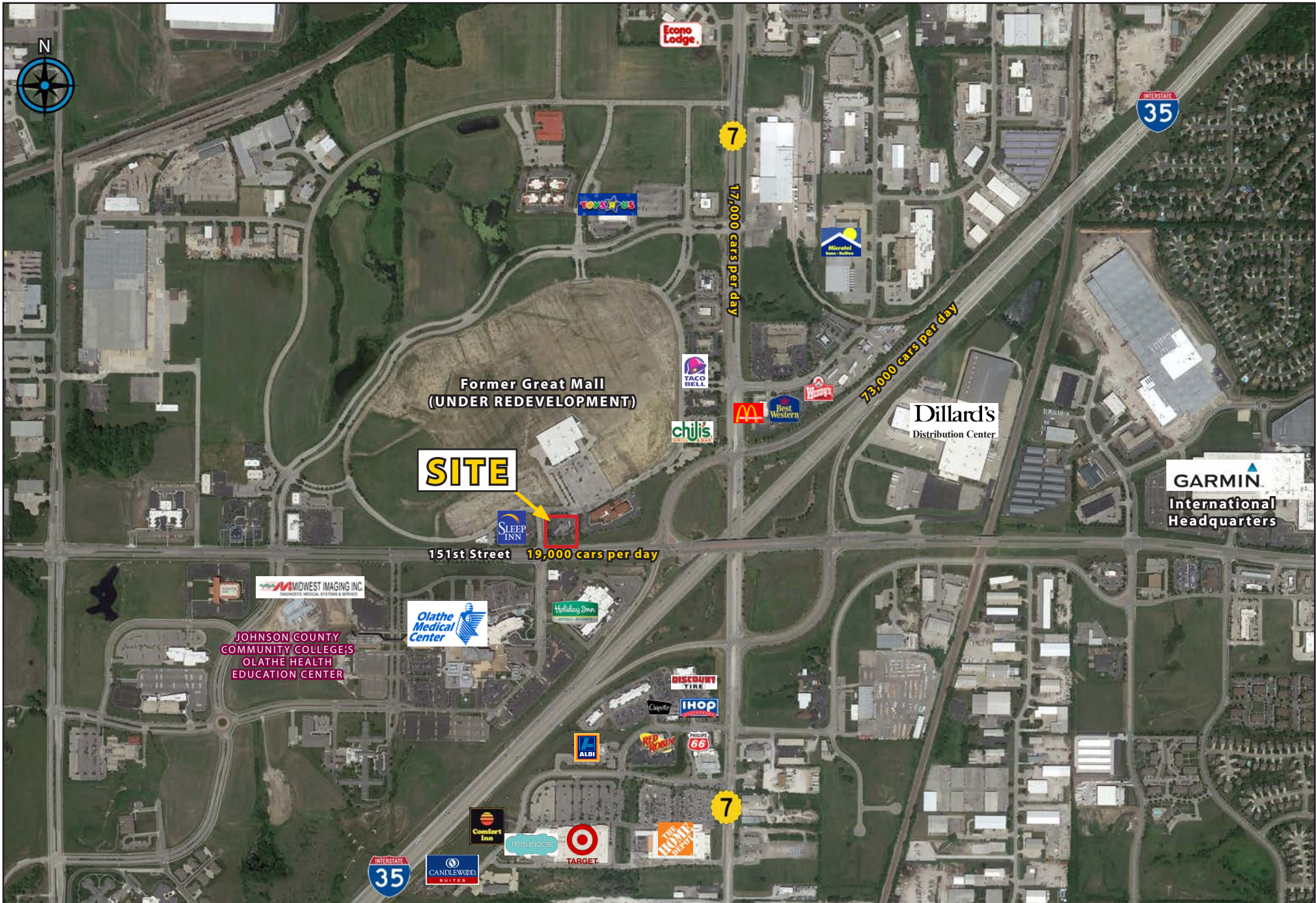
The KRAUSZ COMPANIES, Inc.

Krausz GM Out Parcels LLC
 44 Montgomery St., Suite 3200, San Francisco, CA 94104 | Tel. 415.732.6000

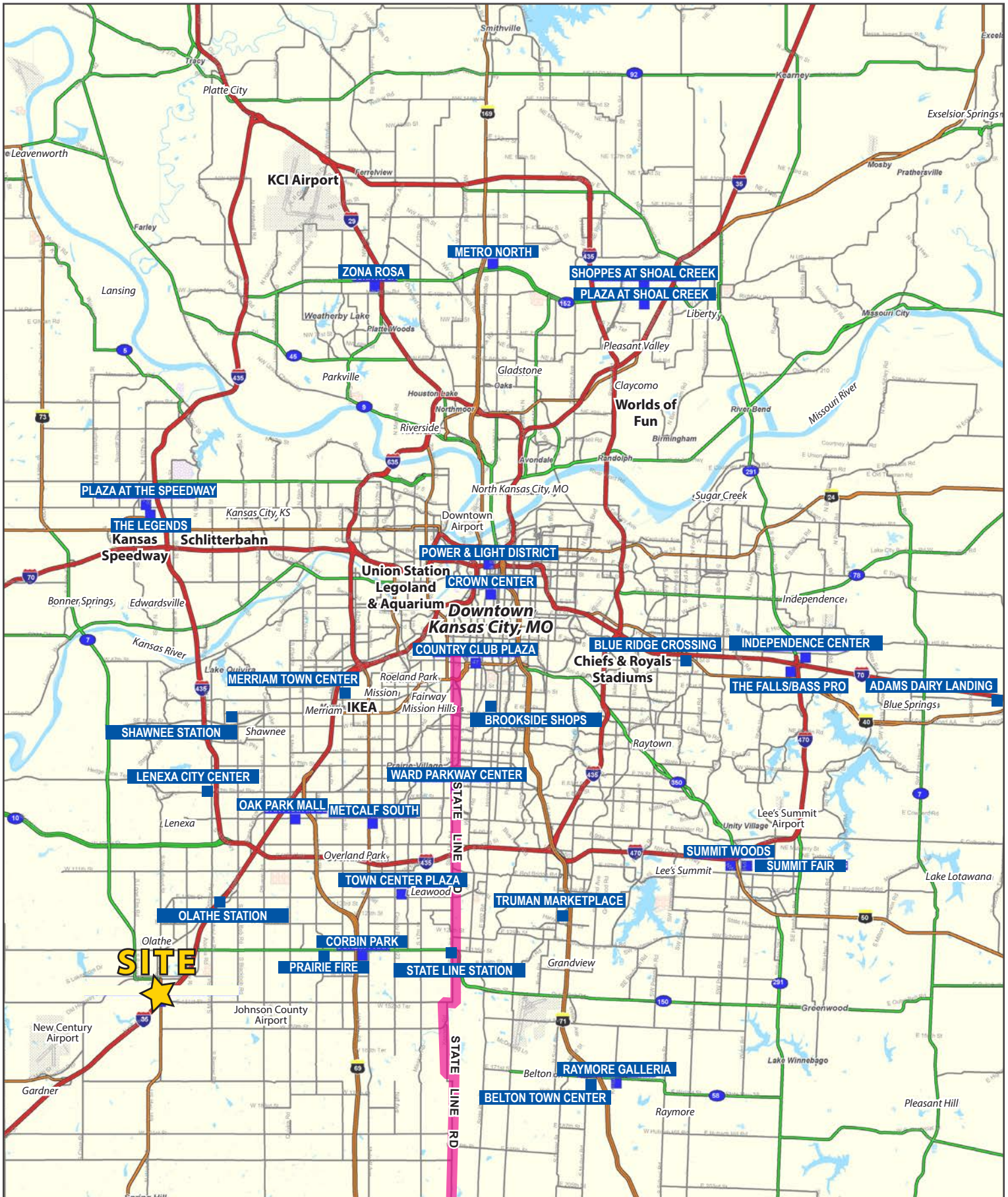
STOUTENBOROUGH

Architects and Planners
 400 81st Street, Suite 100, Olathe, MO 66061 | Tel. 913.251.2221 | Fax 913.251.2224 | www.stoutenborough.com

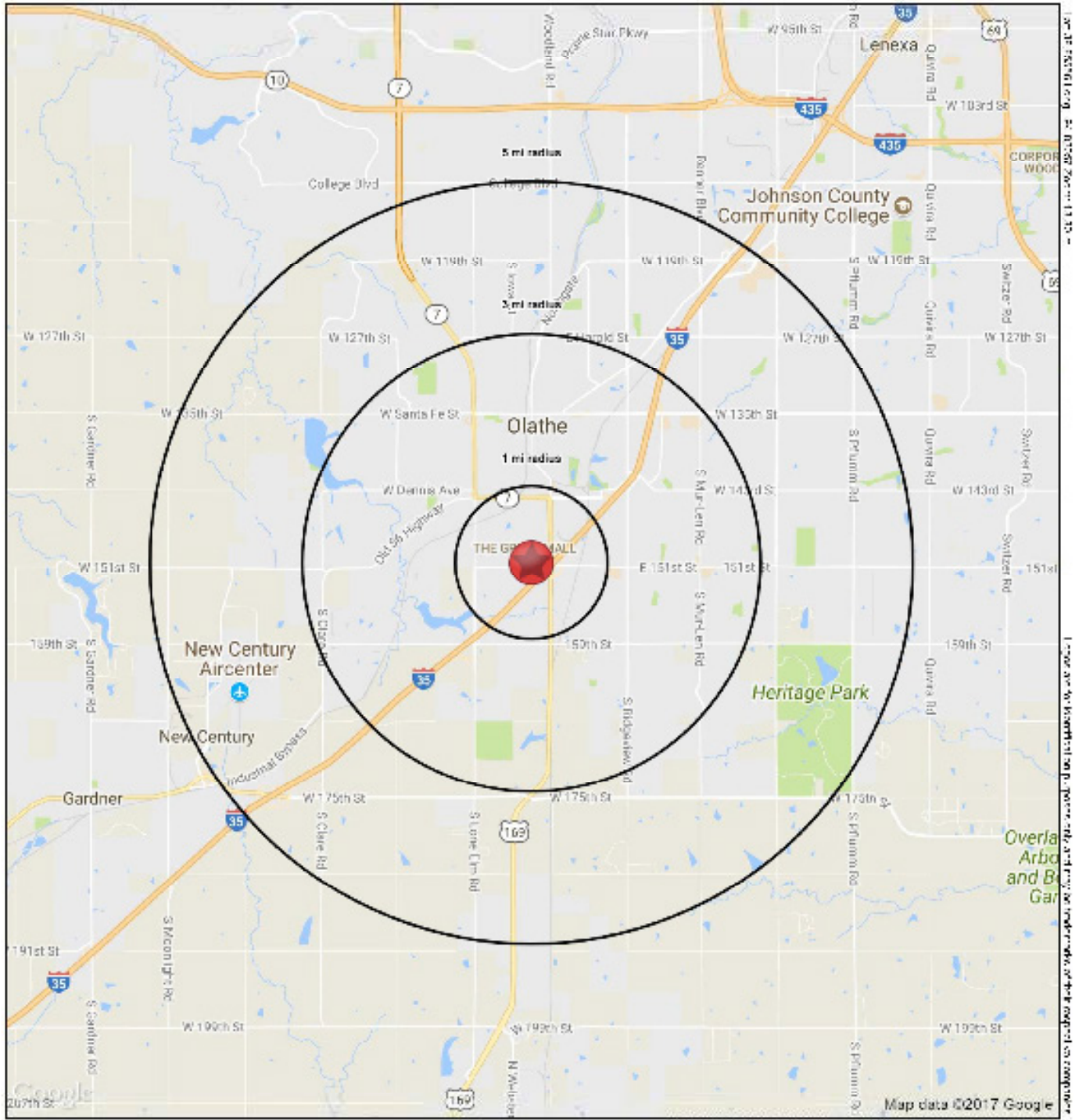
20652 W. 151st Street, Olathe, Kansas



Greater Kansas City Metropolitan Area | Locator Map



SITE



20652 W. 151st Street
Olathe, KS 66061

September 2017

Information provided is for informational purposes only and does not constitute an offer. The information herein is provided for informational purposes only.

SUMMARY PROFILE

2000-2010 Census, 2017 Estimates with 2022 Projections

Calculated using Weighted Block Counts from Block Groups

Lat/Lon: 38.9552/-94.9208

791

20652 W. 151st Street

1 mi radius 3 mi radius 5 mi radius

Olathe, KS 66061

	1 mi radius	3 mi radius	5 mi radius	
POPULATION	2017 Estimated Population	682	62,088	129,580
	2022 Projected Population	717	65,101	135,807
	2010 Census Population	670	58,880	120,807
	2000 Census Population	452	46,870	88,888
	Projected Annual Growth 2017 to 2022	0.7%	1.0%	1.0%
	Historical Annual Growth 2000 to 2017	3.1%	1.4%	2.6%
	2017 Median Age	47.3	33.8	33.4
HOUSEHOLDS	2017 Estimated Households	274	21,845	45,588
	2022 Projected Households	288	23,105	48,588
	2010 Census Households	260	20,282	41,843
	2000 Census Households	128	17,204	31,145
	Projected Annual Growth 2017 to 2022	1.0%	1.3%	1.3%
	Historical Annual Growth 2000 to 2017	6.8%	1.5%	2.7%
RACE AND ETHNICITY	2017 Estimated White	54.1%	51.0%	51.1%
	2017 Estimated Black or African American	3.4%	6.0%	6.1%
	2017 Estimated Asian or Pacific Islander	3.0%	3.8%	4.0%
	2017 Estimated American Indian or Native Alaskan	0.5%	0.4%	0.4%
	2017 Estimated Other Races	8.0%	8.8%	7.4%
	2017 Estimated Hispanic	12.6%	13.3%	10.8%
INCOME	2017 Estimated Average Household Income	\$104,188	\$55,875	\$85,330
	2017 Estimated Median Household Income	\$59,888	\$78,462	\$88,584
	2017 Estimated Per Capita Income	\$42,300	\$30,048	\$33,881
EDUCATION (AGE 25+)	2017 Estimated Elementary (Grade Level 0 to 8)	5.4%	4.2%	2.8%
	2017 Estimated Some High School (Grade Level 9 to 11)	12.4%	4.7%	3.4%
	2017 Estimated High School Graduate	22.3%	21.2%	18.8%
	2017 Estimated Some College	15.1%	22.3%	21.8%
	2017 Estimated Associates Degree Only	10.8%	9.8%	8.1%
	2017 Estimated Bachelors Degree Only	17.8%	27.1%	30.1%
	2017 Estimated Graduate Degree	15.8%	11.0%	14.1%
BUSINESS	2017 Estimated Total Businesses	817	2,801	4,345
	2017 Estimated Total Employees	9,858	35,322	58,048
	2017 Estimated Employee Population per Business	16.0	12.8	13.8
	2017 Estimated Residential Population per Business	1.1	22.2	28.8

All information is provided for informational purposes only. It is not intended to be used for any other purpose. All information is provided as of the date of the report.