

HALEKUI CENTER RETAIL FOR LEASE

563-565
FARRINGTON HWY
KAPOLEI, HAWAII



CBRE

PROPERTY HIGHLIGHTS



997 – 1,300 SF

Retail Suites for Lease



Abundant Parking and Access

Ample On-Site Parking and Easy Ingress and Egress.



Major Retail Thoroughfare:

Excellent Frontage Along High-Traffic Farrington Hwy (31,824 VPD) and Surrounded by A Strong Mix of National and Local Retailers.



Strong Demographics

Located In an Affluent Trade Area with High Income and Population Within 1 Mile.



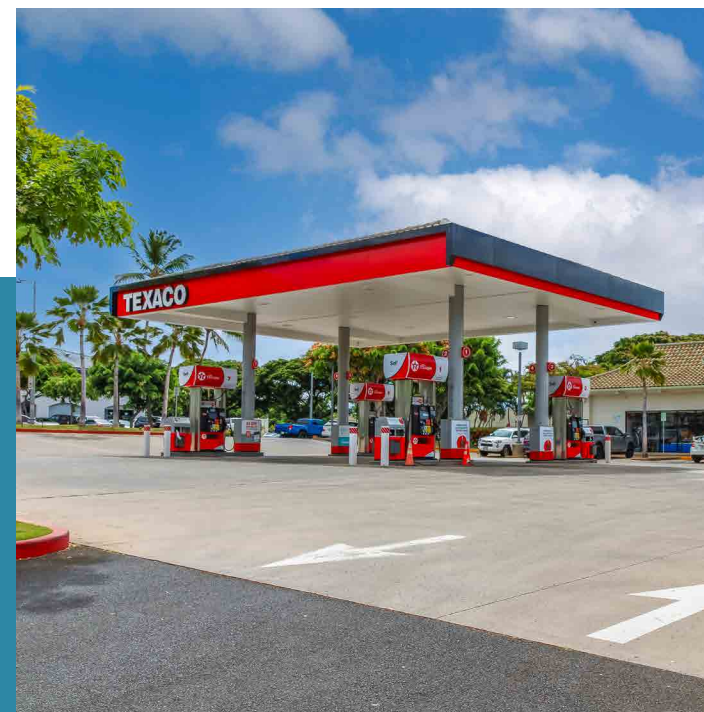
Thriving Kapolei Location

Surrounded by A Growing Residential Population, Schools, and Amenities.

AVAILABILITIES



Suite	Size	Base Rent + CAM
101	Sacred Art Tattoo	
101A	1,278 SF	Upon Request
101B	My Cafe	
102	808 Snax	
103	Thai Lao Restaurant	
104	1,281 SF	Upon Request
105	Mak Agency - GEICO	
106	US Army Engineer Honolulu	
107	The Barbershop	
108	997 SF	Upon Request
201	Anytime Fitness	
202	1,300 SF	Upon Request
203	Kapolei Karaoke	
204	Kapolei Karaoke	
205	Family Vision Care	
206	Family Vision Care	
207	Kapolei Karaoke	
208	Kapolei Karaoke	
PAD	Texaco	



Welcome to Kapolei!

Kapolei, often referred to as Hawaii's "second city," is a vibrant and rapidly growing community located on the island of Oahu. Known for its modern amenities and family-friendly atmosphere, Kapolei boasts a diverse population and a rich cultural heritage. The area features a mix of residential neighborhoods, shopping centers, and recreational facilities, making it an attractive destination for both residents and visitors. With its strategic location near major highways and proximity to beautiful beaches, Kapolei has become a hub for commerce, education, and entertainment. The ongoing development and investment in infrastructure continue to enhance its appeal as a thriving place to live, work, and play.



66,023
Population

(3 Miles)

19,713
Households

(3 Miles)

\$153,944
Avg. Household Income

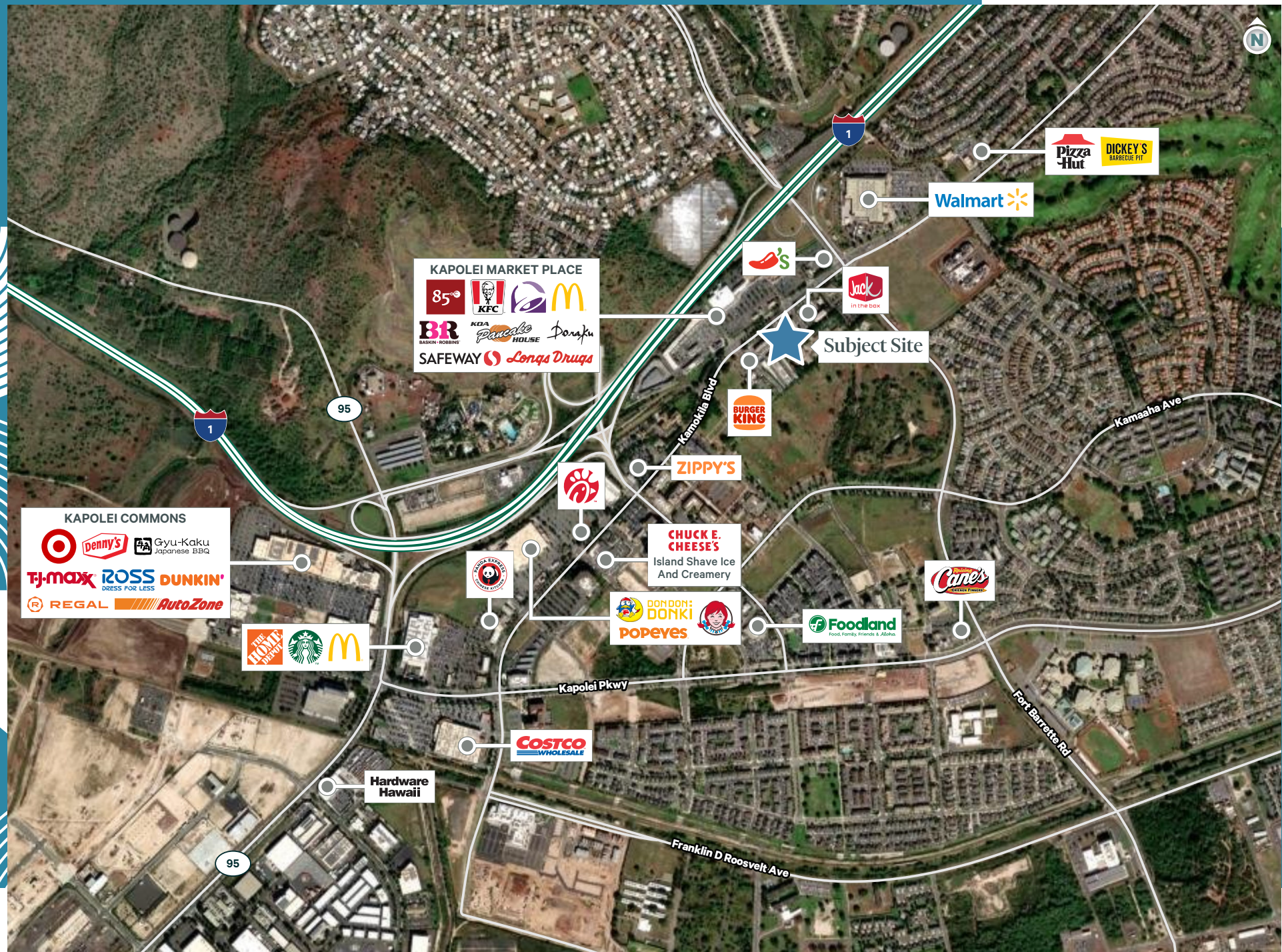
(1 Mile)

60,349
Daytime Population

(3 Miles)



RETAILERS IN THE AREA



563-565
FARRINGTON HWY
KAPOLEI, HAWAII

WENDELL F. BROOKS, III (S)

Executive Vice President
+1 808 541 5101
wendell.brooks@cbre.com
Lic. RS-32651

JAMES L. "KIMO" GREENWELL (S)

Senior Vice President
+1 808 541 5102
kimo.greenwell@cbre.com
Lic. RS-57966

KENNETH G. "KENNY" WHITING (S)

Associate
+1 808 541 5110
kennywhiting@cbre.com
Lic. RS-82297

CONNOR PATTERSON (S)

Associate
+1 817 946 5940
connor.patterson@cbre.com
Lic. RS-86889



© 2025 CBRE, Inc. All rights reserved. This information has been obtained from sources believed reliable but has not been verified for accuracy or completeness. You should conduct a careful, independent investigation of the property and verify all information. Any reliance on this information is solely at your own risk. CBRE and the CBRE logo are service marks of CBRE, Inc. All other marks displayed on this document are the property of their respective owners, and the use of such logos does not imply any affiliation with or endorsement of CBRE. Photos herein are the property of their respective owners. Use of these images without the express written consent of the owner is prohibited.

CBRE