

5601 WHITWORTH ROAD

LAVONIA, GA
30553

FOR SALE
23.89+/- Total Acres

JOWELL THOME

Advisor
404.316.6158
jthome@kingindustrial.com

JASON MCCART, SIOR

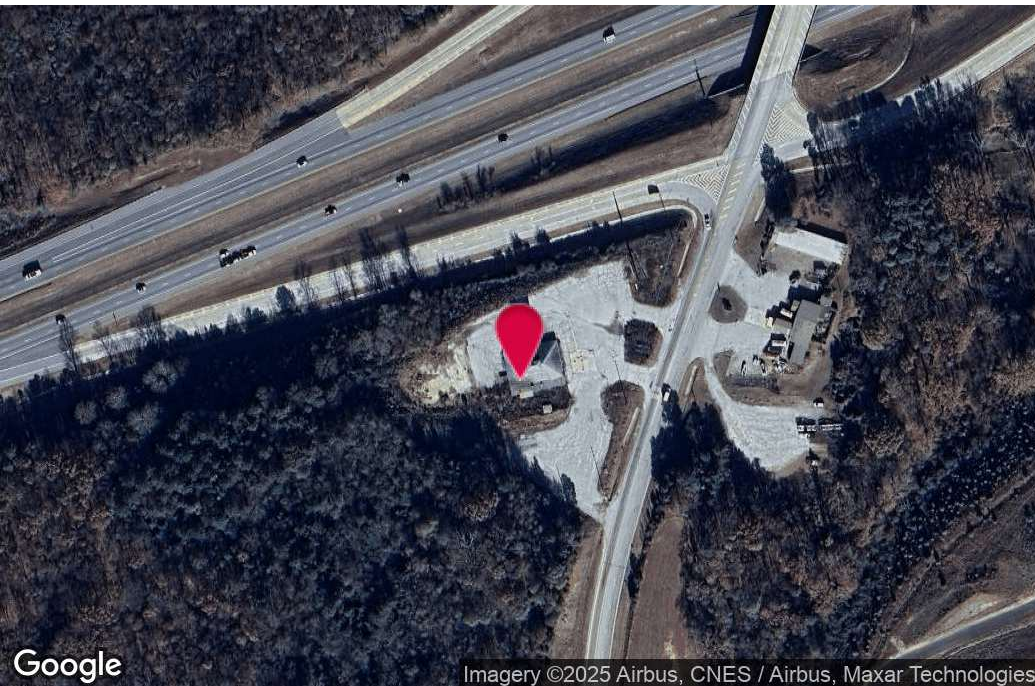
Senior Vice President
770.601.5451
jmccart@kingindustrial.com

King Industrial
Realty, Inc.

Industrial • Commercial • Investment
404.942.2000 | kingindustrial.com



FOR SALE
23.89+/-
TOTAL ACRES



PROPERTY HIGHLIGHTS

- 3.19+/- Acres: Pin Corner on Southeast Corner of I-85 & Whitworth Rd
- 448 ft. of Frontage on Whitworth Rd & 190 ft. of Frontage along the on ramp onto I-85
- 20.7+/- Acres: Pin Corner of I-85 & Whitworth Rd
- 850 ft. of Frontage Along the Off Ramp of I-85
- 1,650 ft. on Whitworth Rd & 500 ft. on Knox Bridge Crossing Rd
- Ideal for a Truck Shop
- Willing to Subdivide

OFFERING SUMMARY

Lot Size:	23.89 Acres
Zoning:	C

JOWELL THOME

Advisor

404.316.6158

jthome@kingindustrial.com

JASON MCCART, SIOR

Senior Vice President

770.601.5451

jmccart@kingindustrial.com

Every effort has been made to provide accurate information, but no liability is assumed for errors or omissions.



Industrial • Commercial • Investment
404.942.2000 | kingindustrial.com

ADDITIONAL PHOTOS



JOWELL THOME

Advisor

404.316.6158

jthome@kingindustrial.com

JASON MCCART, SIOR

Senior Vice President

770.601.5451

jmccart@kingindustrial.com

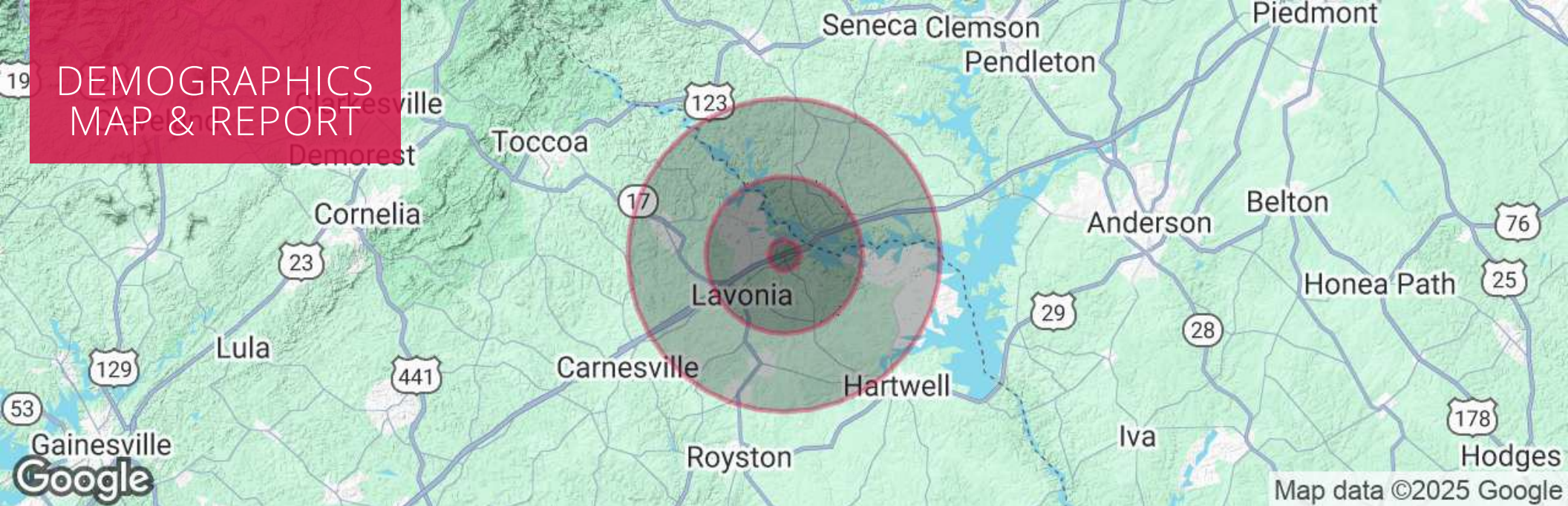
Every effort has been made to provide accurate information, but no liability is assumed for errors or omissions.

king Industrial
Realty, Inc. **CORFAC**
INTERNATIONAL

Industrial • Commercial • Investment
404.942.2000 | kingindustrial.com

404.942.2000 | kingindustrial.com

DEMOGRAPHICS MAP & REPORT



POPULATION

	1 MILE	5 MILES	10 MILES
Total Population	283	7,811	32,090
Average Age	39.1	40.4	41.5
Average Age (Male)	37.5	38.9	40.4
Average Age (Female)	39.4	40.7	41.8

HOUSEHOLDS & INCOME

	1 MILE	5 MILES	10 MILES
Total Households	100	2,965	12,571
# of Persons per HH	2.8	2.6	2.6
Average HH Income	\$52,595	\$53,718	\$53,132
Average House Value	\$190,712	\$185,277	\$177,782

JOWELL THOME

Advisor

404.316.6158

jthome@kingindustrial.com

JASON MCCART, SIOR

Senior Vice President

770.601.5451

jmccart@kingindustrial.com

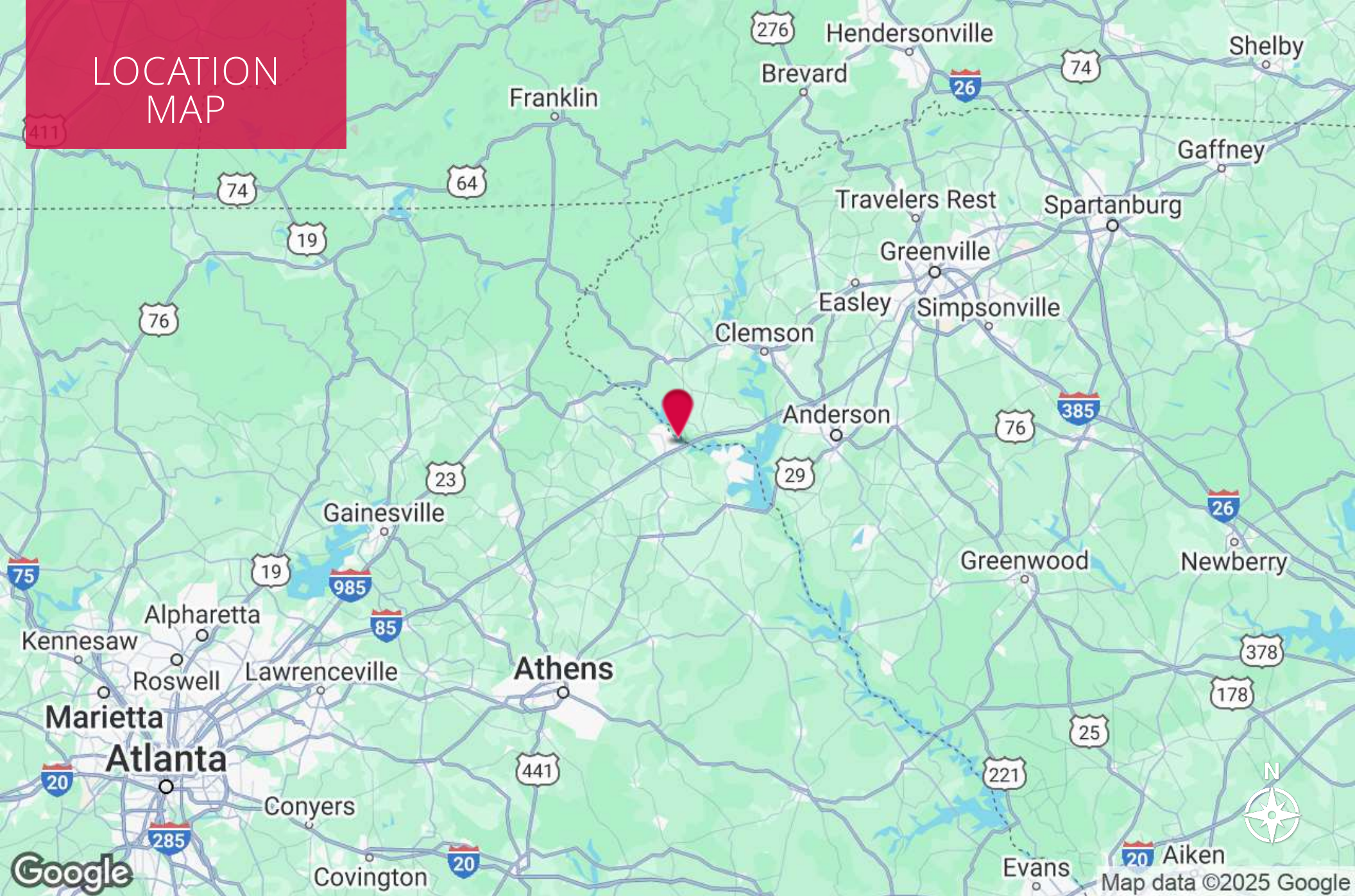
Every effort has been made to provide accurate information, but no liability is assumed for errors or omissions.

king Industrial
Realty, Inc.

CORFAC
INTERNATIONAL

Industrial • Commercial • Investment
404.942.2000 | kingindustrial.com

LOCATION MAP



Advisor

404.316.6158

jthome@kingindustrial.com

Senior Vice President

770.601.5451

jmccart@kingindustrial.com

Every effort has been made to provide accurate information, but no liability is assumed for errors or omissions.

King Industrial Realty, Inc. **CORFAC**
INTERNATIONAL

Industrial • Commercial • Investment
404.942.2000 | kingindustrial.com

Exit 177



3.19+/- Acres

20.7+/- Acres

EXCLUSIVELY LISTED BY:

JOWELL THOME

Advisor

jthome@kingindustrial.com

404.316.6158

JASON MCCART, SIOR

Senior Vice President

jmccart@kingindustrial.com

770.601.5451

King Industrial
Realty, Inc.

Industrial • Commercial • Investment
404.942.2000 | kingindustrial.com