

CARY MEDICAL PAVILLION

105 SW CARY PKWY

CARY | NORTH CAROLINA



CONTACT

ELAINE BOYLE
VP, Leasing and Brokerage
D. 919-348-7943
elaine@FlagshipHP.com



©2023 The information contained herein was obtained from sources believed reliable; however, Flagship Healthcare Properties makes no guarantees, warranties, or representations as to the completeness or accuracy thereof. The presentation of this property is submitted subject to errors, omissions, changes of price or conditions prior to sale or lease, or withdrawal without notice.

FOR LEASE

PROPERTY OVERVIEW

105 SW Cary Parkway

- Built in 1999 and redeveloped in 2019-2020
- Situated in one of the Triangle market's most dynamic areas
- Located at a prominent intersection between Downtown Cary and the intersection of US-1/64 and Tryon Road
- Great visibility and traffic counts of approximately 28,000 VPD
- Abundant walkable amenities, with two shopping centers, Shoppers of Kildaire and Saltbox Village, immediately across Kildaire Farm Road
- Located near WakeMed Cary Hospital and the well-established Cary residential neighborhoods in the area
- Suite 300, a newly updated 2nd generation medical space is available for short term leases for healthcare providers awaiting completion of new construction

SUITE 300 UPDATES:

- Modern, fresh updates by a local interior design expert
- New LVT flooring and carpet throughout
- New LED lighting
- Freshly painted walls and trim in fresh modern palette
- New Countertops

[Click Here For](#)
VIRTUAL TOUR



Available Space:
3,400-6,908 SF



Total Building Area:
± 18,195 SF



Year Built/Renovated:
1986/2020



Stories:
Three (3)



Parking:
4.41/1,000



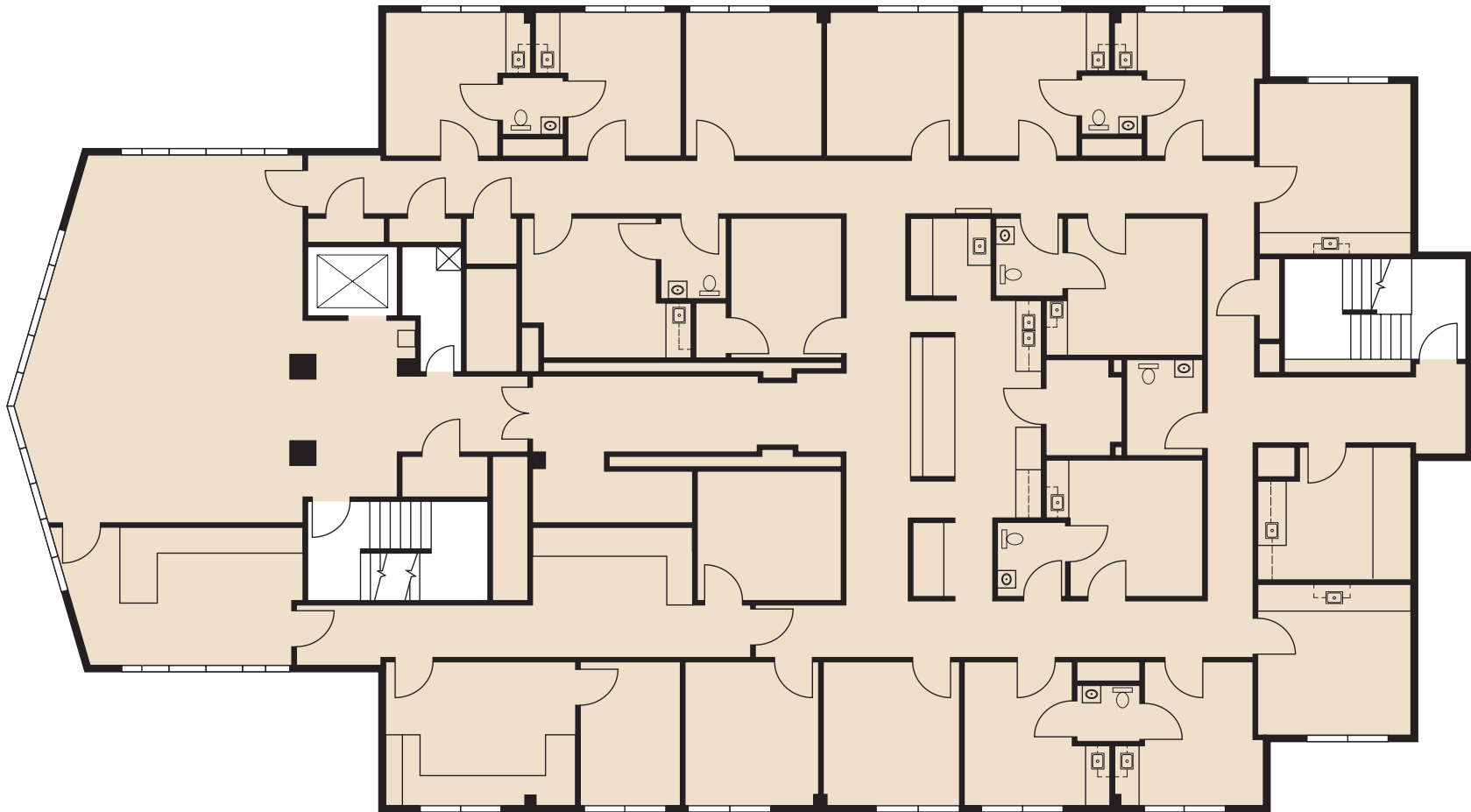
Zoning:
Town of Cary "PDD
Major"



Lease Rate:
\$23.00/SF, NNN



FLOOR PLAN



*Minimum Divisible Space: 3,400 SF

TEST FIT

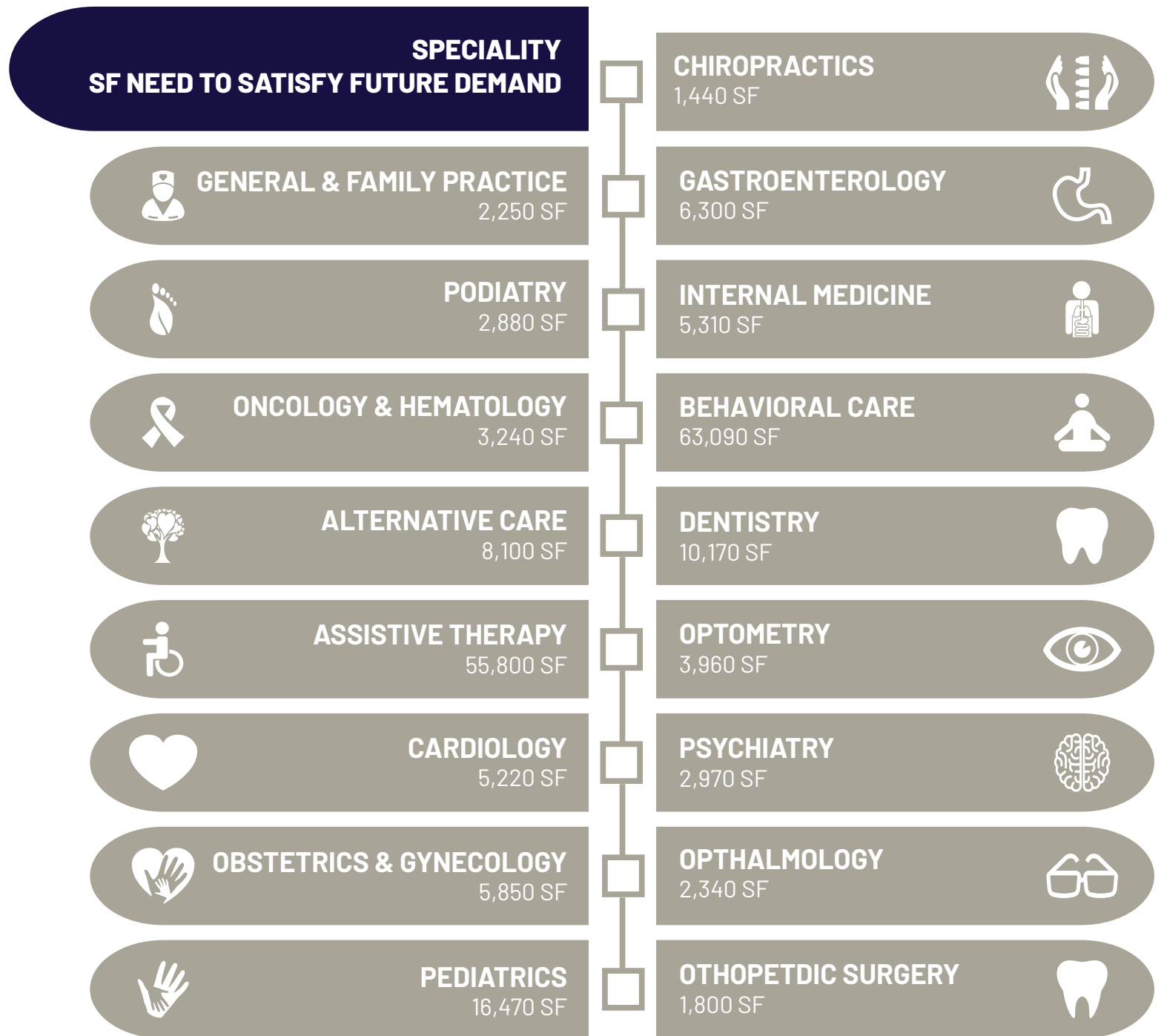
2 PROVIDERS



TEST FIT 3 PROVIDERS



CLINICIAN SF FOR UNDERSERVED DEMAND BY SPECIALTY



Above depicts the anticipated square foot needed to satisfy future demand based on projected five year population growth.

AREA OVERVIEW

