



**MARTIN
COMMERCIAL
GROUP**
Commercial Real Estate Services



AVAILABLE FOR LEASE

2,605 SQ. FT. INDUSTRIAL UNIT



41755-A Rider Way, Temecula

- Large Open Reception / Showroom
- 4 Private Offices
- Large Open Warehouse
- Fully Air Conditioned Offices
- Fully Refurbished
- Mezzanine For Additional Storage
- 1 Rear GL Loading Door
- 15' Warehouse Clearance
- Professionally Managed
- Easy Access 215/15 Freeways



For More Information
Please Contact:

JACKIE BEAUCHAMP

jbeauchamp@mcgre.com
DRE#01461175

951.684.1251

*Since 1953...
Orange County ~ Inland Empire*

The information contained herein has been obtained from sources we deem reliable. While we have no reason to doubt its accuracy, we do not guarantee it.



MARTIN
COMMERCIAL
GROUP

Commercial Real Estate Services



For More Information
Please Contact:

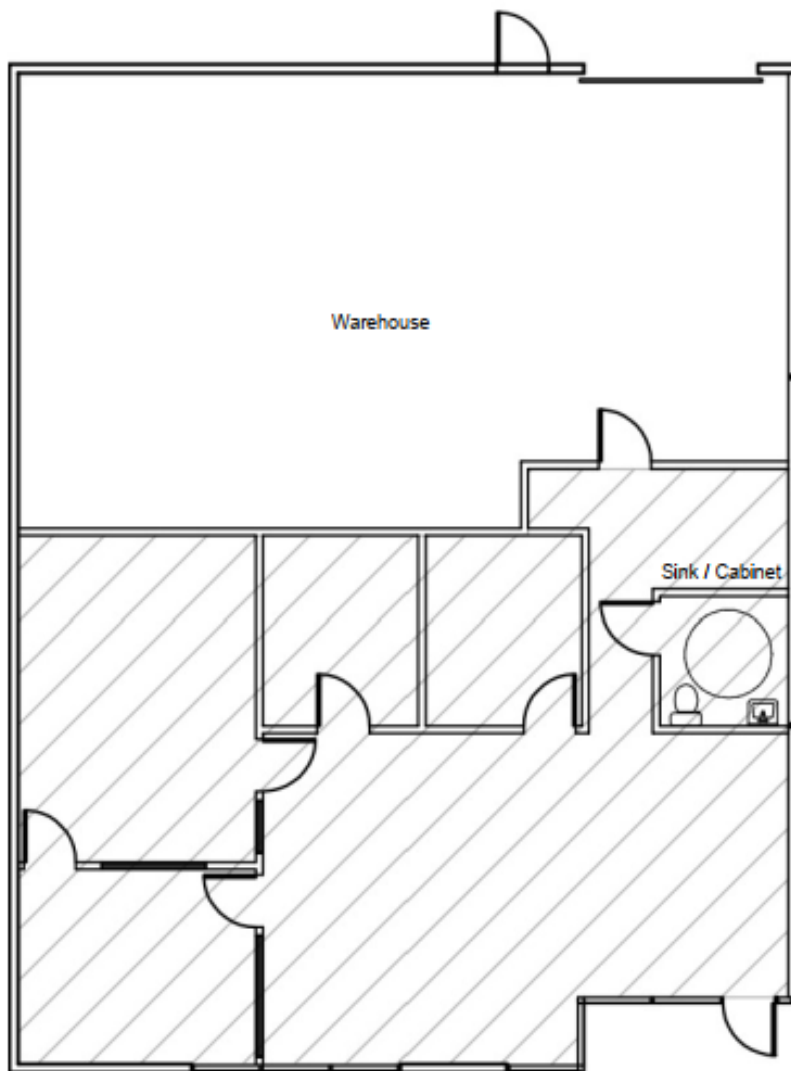
JACKIE BEAUCHAMP

jbeauchamp@mcgre.com
DRE#01461175

951.684.1251

*Since 1953...
~Orange County~
Inland Empire*

41755-A Rider Way, Temecula



WWW.MCGRE.COM

ORANGE COUNTY: 714.241.1141 FAX 714.241.0847

INLAND EMPIRE: 951.684.1251 FAX 951.684.9041

Corporate Office: 1495 E. WARNER AVENUE ~ SANTA ANA, CA 92705