



W E L C O M E T O H A R B O R P O I N T

# 2187

ATLANTIC / STREET

STAMFORD, CONN.



**NEWMARK**



# HARBOR POINT LIVE. WORK. PLAY.



**2+**

Miles of waterfront boardwalk

**4**

Marinas



**15+**

Restaurants

**20+**

Acres of actively programmed parks



**4K+**

Apartments



Contact Exclusive Brokers:

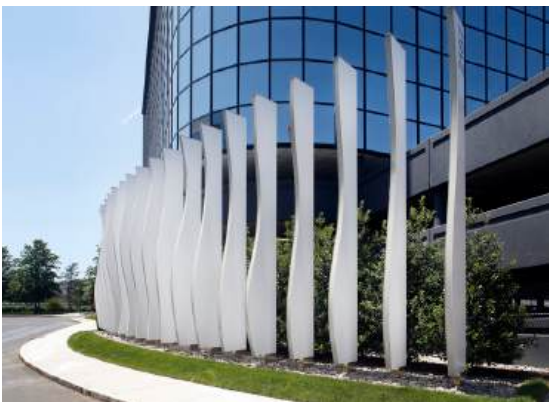
**BENJAMIN GOLDSTEIN**  
914-610-5954 | benjamin.goldstein@nrmk.com

**CORY GUBNER**  
203-531-3626 | cory.gubner@nrmk.com

**NEWMARK**



# 2187



## PROPERTY HIGHLIGHTS

- Located in the heart of Harbor Point
- Surrounded by retail & restaurants
- 5 minute walk to train, 53-minute ride to NYC
- Spectacular water views
- Shuttle rides to the train station
- Fully equipped fitness center

## AVAILABLE SPACES

Partial 4 <sup>th</sup>	7,599 SF	High-end second generation buildout
Partial 6 <sup>th</sup>	3,271 SF	Prebuild ready for occupancy
Entire 7 <sup>th</sup>	13,598 SF	Prebuilds of various sizes under construction



# BRAND NEW MODERN LOBBY





# PRE-BUILD FINISHES

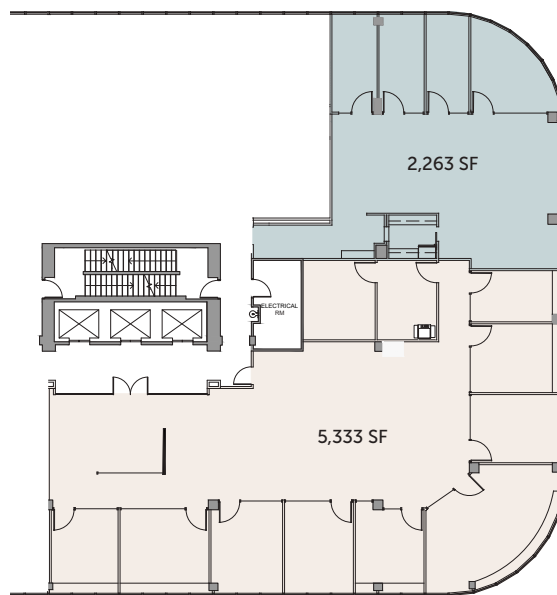
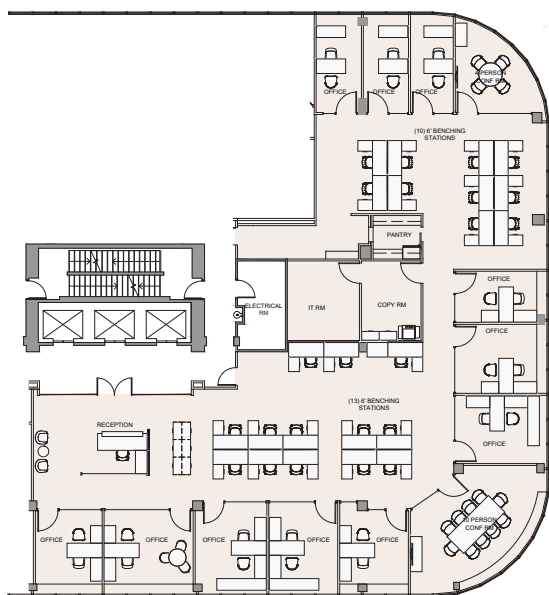




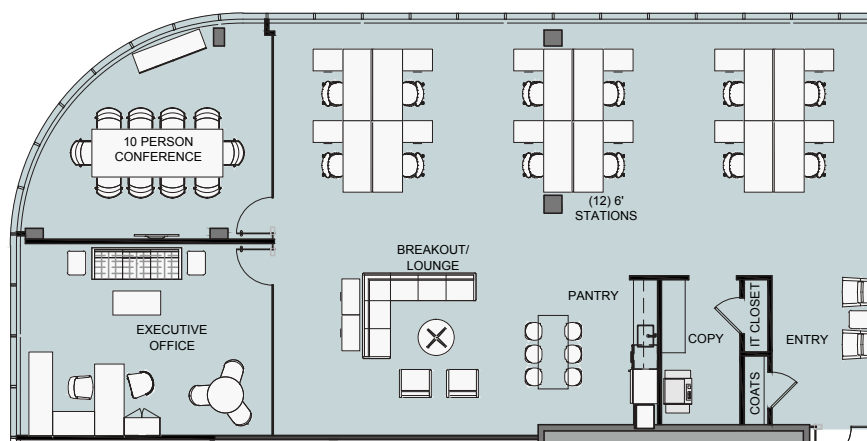
# PRE-BUILD FINISHES



## PARTIAL 4<sup>TH</sup> FLOOR: 7,599 SF (HIGH-END 2<sup>ND</sup> GENERATION BUILDOUT)



## PARTIAL 6<sup>TH</sup> FLOOR: 3,271 SF (PREBUILD READY FOR OCCUPANCY)



Contact Exclusive Brokers:

**BENJAMIN GOLDSTEIN**  
914-610-5954 | benjamin.goldstein@nmrk.com

**CORY GUBNER**  
203-531-3626 | cory.gubner@nmrk.com

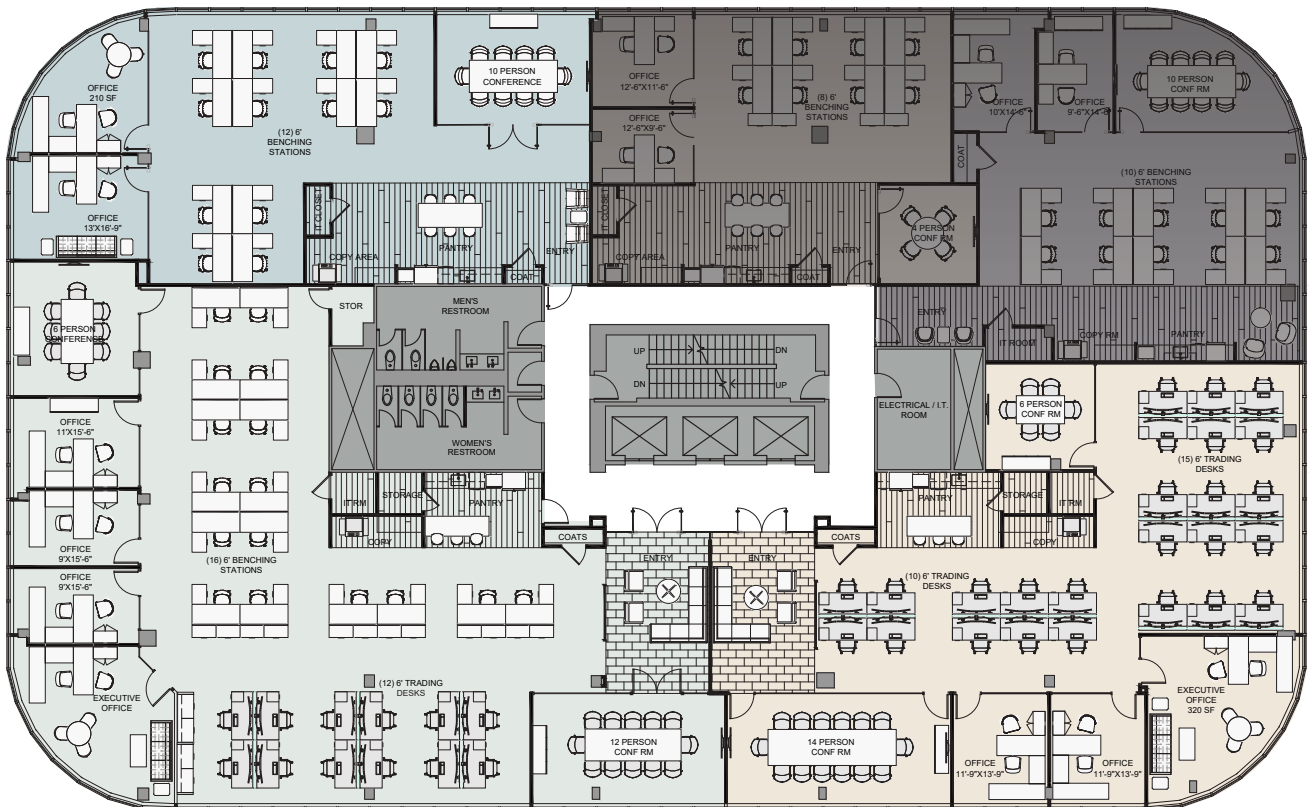
**NEWMARK**

## PARTIAL 7<sup>TH</sup> FLOOR: 13,598 SF (PREBUILDS UNDER CONSTRUCTION)

**SUITE 701**  
3,134 SF

**SUITE 702**  
LEASED

**SUITE 703**  
LEASED



**SUITE 705**  
5,959 SF

**SUITE 704**  
4,505 SF

Contact Exclusive Brokers:

**BENJAMIN GOLDSTEIN**  
914-610-5954 | benjamin.goldstein@nmrk.com

**CORY GUBNER**  
203-531-3626 | cory.gubner@nmrk.com

**NEWMARK**