

450 - 470 ENTERPRISE COURT
BLOOMFIELD TWP., MICHIGAN



**SIGNATURE
ASSOCIATES**
KNOW SIGNATURE | KNOW RESULTS

HI-TECH FOR LEASE
6,000 Square Feet Available



PROPERTY FEATURES

- 6,000 square feet available
- 1,200 square feet office
- 12' clear height
- (1) 8' x 8' grade level door
- 1000 amps, 220 volts power, Generator
- Professionally finished offices can be reconfigured/reduced
- Clear span, LED lighting, painted floors and walls in warehouse with windows on the west wall
- Unique opportunity in Bloomfield Twp. for industrial or flex space
- Centrally located with easy access to Telegraph, Woodward & I-75



For more information, please contact:

JEFF LEMANSKI

(248) 359 0641

jlemanski@signatureassociates.com

KRIS PAWLOWSKI

(248) 359 3801

kpawlowski@signatureassociates.com

SIGNATURE ASSOCIATES

One Towne Square, Suite 1200

Southfield, MI 48076

www.signatureassociates.com

450 - 470 Enterprise Court – Bloomfield Twp., Michigan

Industrial/Flex Space For Lease

6,000
Square Feet
AVAILABLE

Interior Photos



For more information, please contact:

JEFF LEMANSKI
(248) 359 0641
jlemanski@signatureassociates.com

KRIS PAWLOWSKI
(248) 359 3801
kpawlowski@signatureassociates.com

SIGNATURE ASSOCIATES
One Towne Square, Suite 1200
Southfield, MI 48076
www.signatureassociates.com

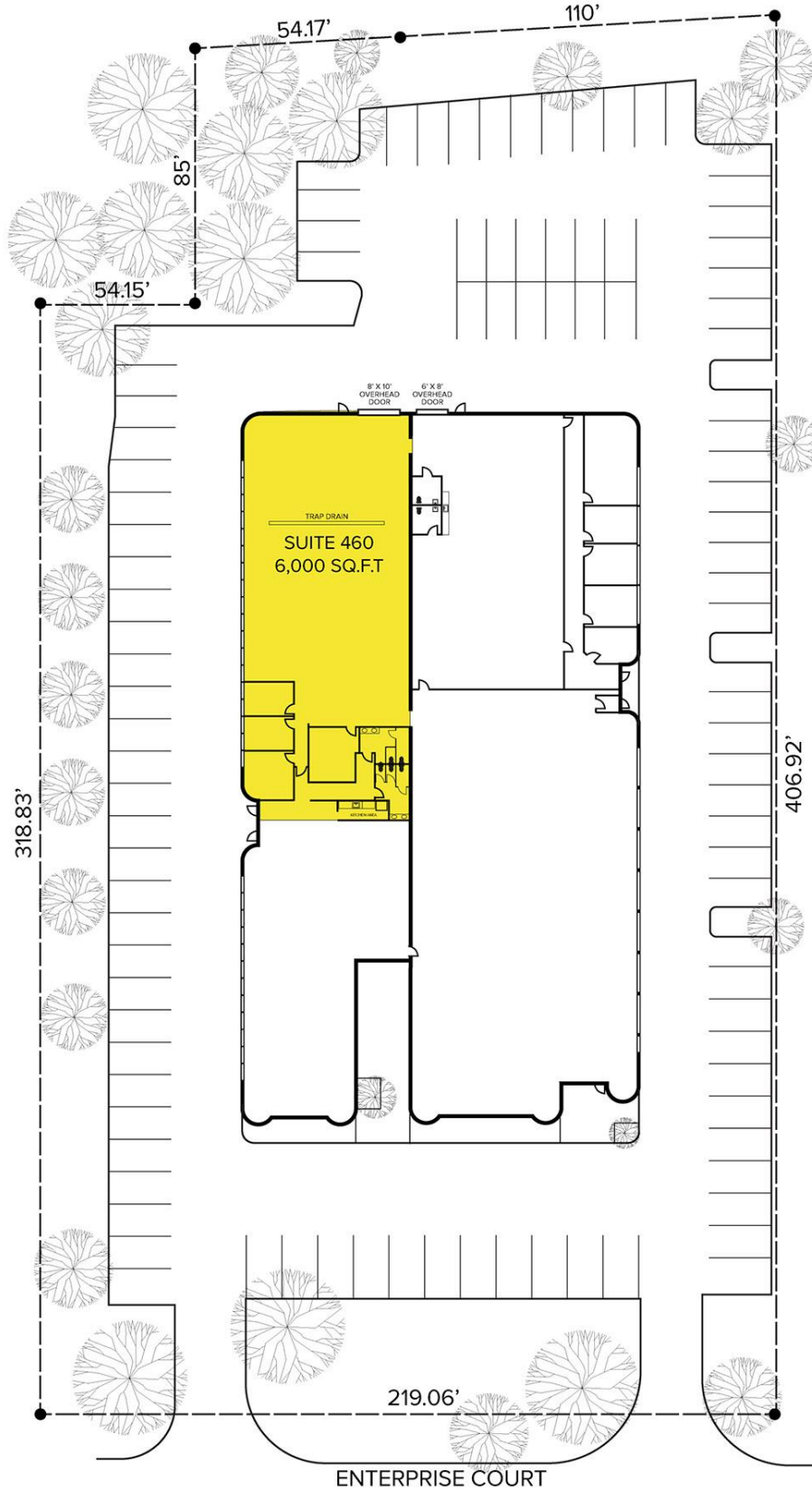
Information is subject to verification and no liability for errors or omissions is assumed. Price is subject to change and listing withdrawal.

450 - 470 Enterprise Court – Bloomfield Twp., Michigan

Industrial/Flex Space For Lease

6,000
Square Feet
AVAILABLE

Site Plan



For more information, please contact:

JEFF LEMANSKI

(248) 359 0641

jlemanski@signatureassociates.com

KRIS PAWLOWSKI

(248) 359 3801

kpawlowski@signatureassociates.com

SIGNATURE ASSOCIATES

One Towne Square, Suite 1200

Southfield, MI 48076

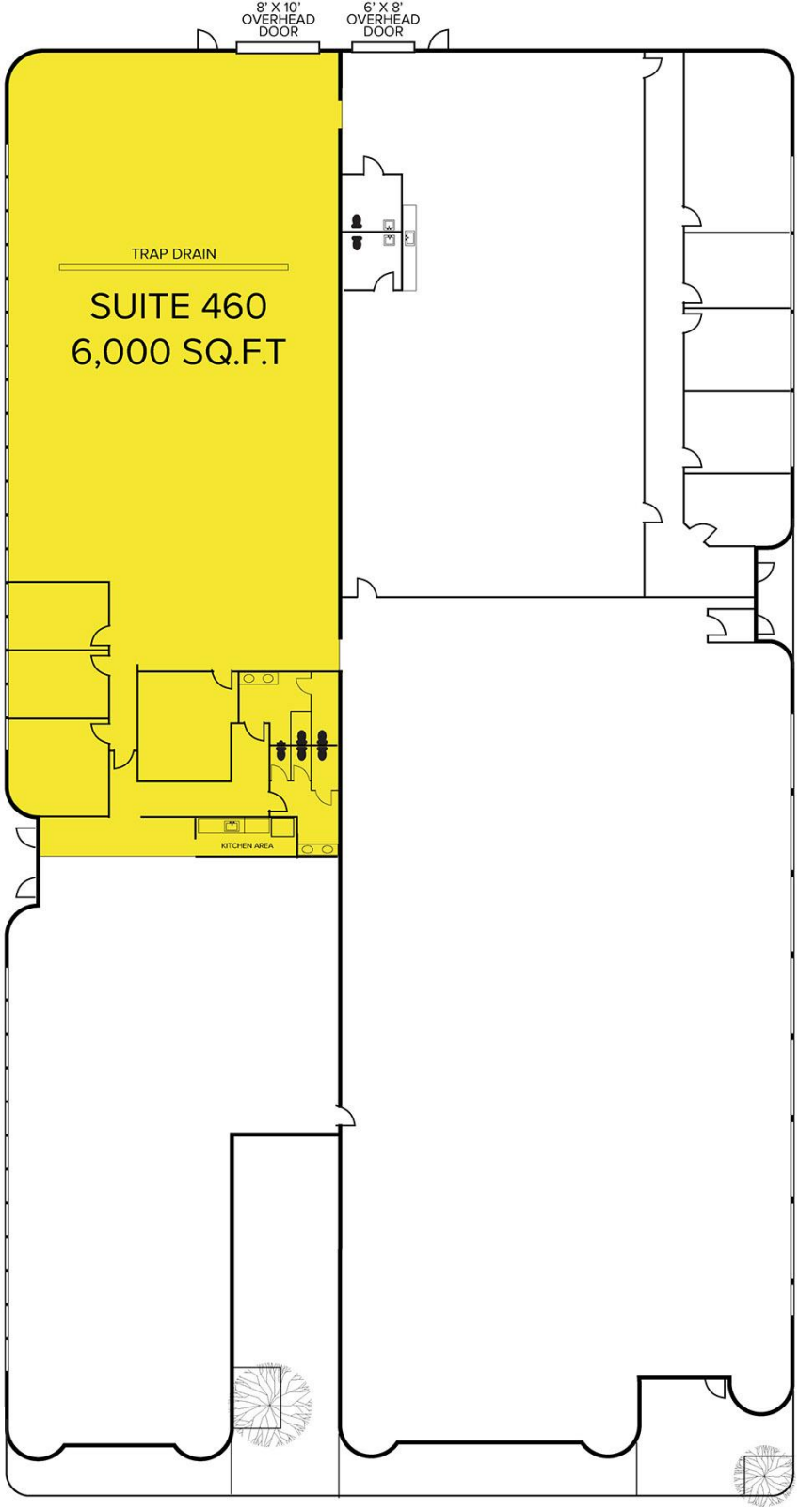
www.signatureassociates.com

450 - 470 Enterprise Court – Bloomfield Twp., Michigan

Industrial/Flex Space For Lease

6,000
Square Feet
AVAILABLE

Floor Plan



For more information, please contact:

JEFF LEMANSKI
(248) 359 0641
jlemanski@signatureassociates.com

KRIS PAWLOWSKI
(248) 359 3801
kpawlowski@signatureassociates.com

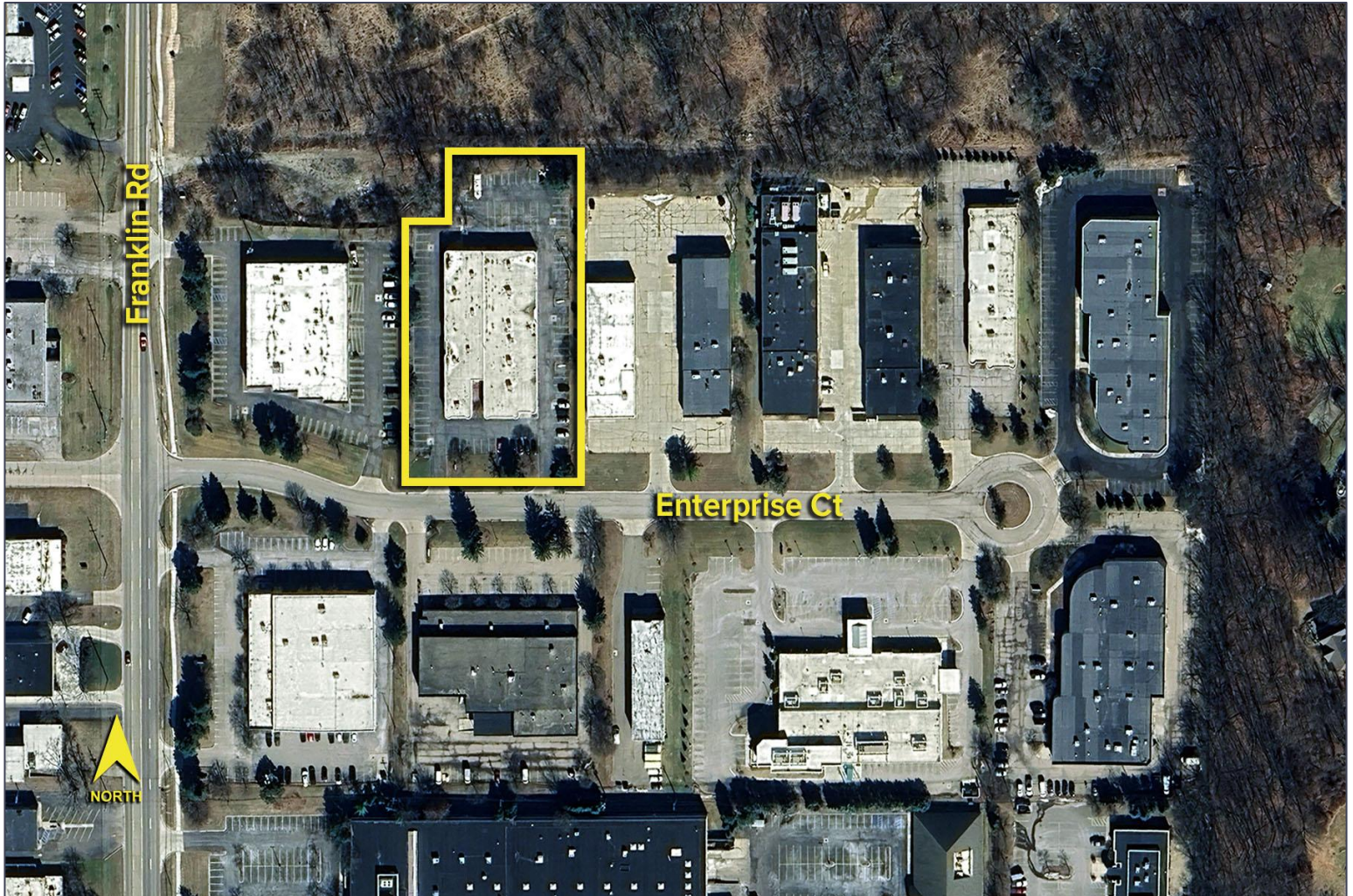
SIGNATURE ASSOCIATES
One Towne Square, Suite 1200
Southfield, MI 48076
www.signatureassociates.com

450 - 470 Enterprise Court – Bloomfield Twp., Michigan

Industrial/Flex Space For Lease

6,000
Square Feet
AVAILABLE

Aerial



For more information, please contact:

JEFF LEMANSKI

(248) 359 0641

jlemanski@signatureassociates.com

KRIS PAWLOWSKI

(248) 359 3801

kpawlowski@signatureassociates.com

SIGNATURE ASSOCIATES

One Towne Square, Suite 1200

Southfield, MI 48076

www.signatureassociates.com