

WAREHOUSE

# FOR SUBLEASE



PREMIER LOCATION



**183 Three Brooks Road**  
Freehold, New Jersey

**12,500 SF AVAILABLE**

**SUBLEASE THROUGH 12/2028**

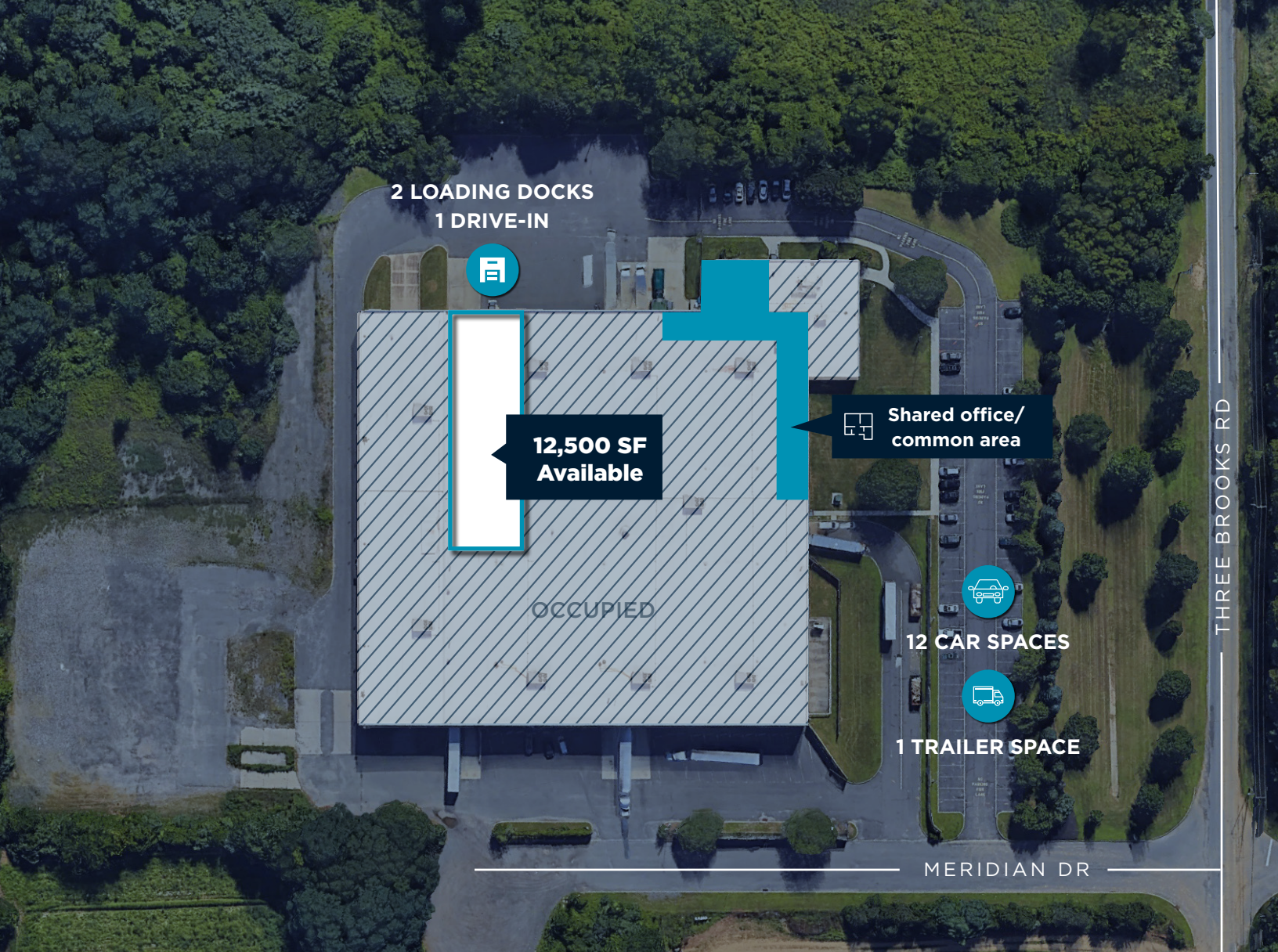


Close Proximity to  
Route 33 & Route 9



Partially Racked





# PROPERTY OVERVIEW



**Sublease Term:**  
Through 12/2028



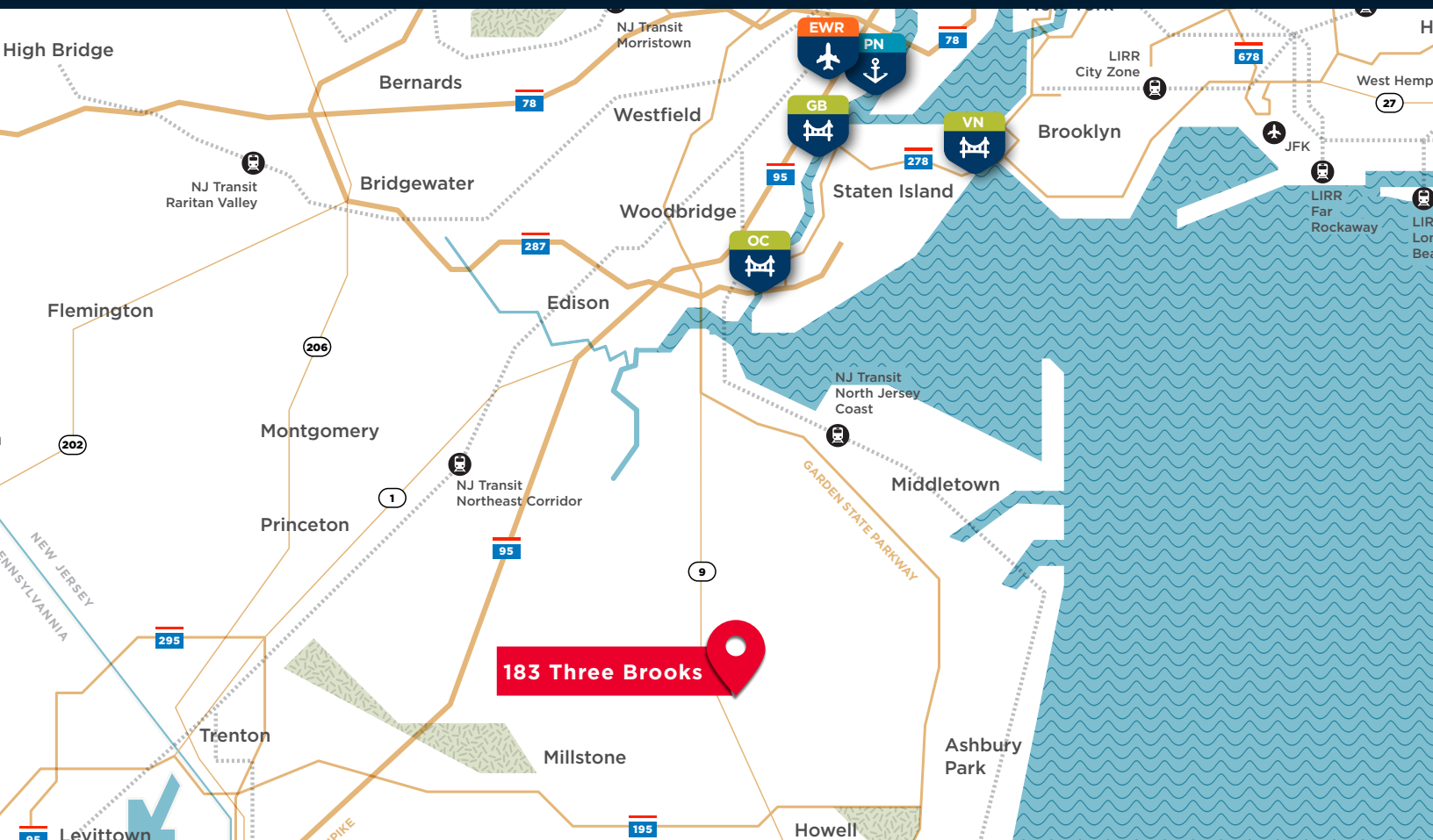
**Partially Racked**

<b>Available SF</b>	12,500 SF
<b>Office</b>	400 SF
<b>Year Built</b>	1989
<b>Acreage</b>	10.53 Acres
<b>Column Spacing</b>	40' x 40'
<b>Loading</b>	2 Loading Docks 1 Drive-In
<b>Parking</b>	12 Car Spaces 1 Trailer Space
<b>Clear Height</b>	21'
<b>Lighting</b>	LED
<b>Sprinkler</b>	ESFR

# PREMIER LOCATION

A premier Freehold location that is directly off of Route 33 and Route 9. This property is uniquely located to provide a broad supply chain solution for both Northern Jersey and NYC and is well positioned for any last mile ecommerce use.

Route 33	0.8 mi
Route 9	1 mi
Interstate 195	5.5 mi
Garden State Pkwy	9 mi
NJ Turnpike	15 mi
Newark Airport	38 mi
Port Newark/Elizabeth	40 mi



**40 Minutes**  
to Newark Airport



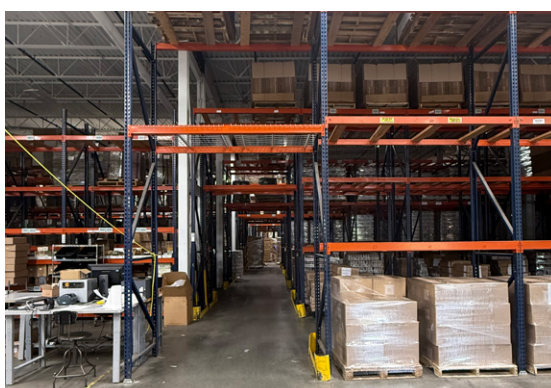
**45 Minutes**  
to Port of Newark



**60 Minutes**  
to Midtown NYC







183 THREE BROOKS RD  
FREEHOLD, NJ

# CONTACT US

**Michael Ugarte**

*Senior Associate*

+1 732 690 1588

michael.ugarte@cushwake.com

**Morgan Nitti**

*Director*

+1 908 377 5327

morgan.nitti@cushwake.com

©2025 Cushman & Wakefield. All rights reserved. The information contained in this communication is strictly confidential. This information has been obtained from sources believed to be reliable but has not been verified. NO WARRANTY OR REPRESENTATION, EXPRESS OR IMPLIED, IS MADE AS TO THE CONDITION OF THE PROPERTY (OR PROPERTIES) REFERENCED HEREIN OR AS TO THE ACCURACY OR COMPLETENESS OF THE INFORMATION CONTAINED HEREIN, AND SAME IS SUBMITTED SUBJECT TO ERRORS, OMISSIONS, CHANGE OF PRICE, RENTAL OR OTHER CONDITIONS, WITHDRAWAL WITHOUT NOTICE, AND TO ANY SPECIAL LISTING CONDITIONS IMPOSED BY THE PROPERTY OWNER(S). ANY PROJECTIONS, OPINIONS OR ESTIMATES ARE SUBJECT TO UNCERTAINTY AND DO NOT SIGNIFY CURRENT OR FUTURE PROPERTY PERFORMANCE.

