

AVAILABLE



FOR LEASE

922 State Avenue
Marysville, Washington



MARYSVILLE CENTER

Steve Erickson | Dale Goong

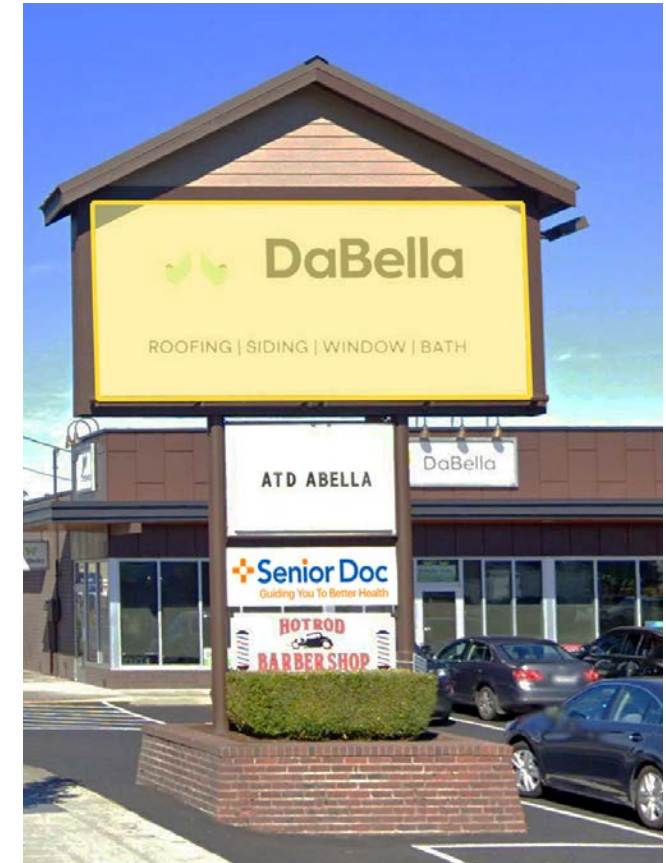
First Western Properties, Inc. | 425.822.5522 | fwp-inc.com
11621 97th Lane NE, Kirkland, Washington 98034

922 STATE AVENUE:

- End Cap: 2,400 SF Available 12/14/2024, \$24.00 PSF + \$4.40 PSF NNN
- Senior Doc Coming Soon!
- Pylon Signage Panel Available
- High Visibility Strip Retail Building & Freestanding Office Building
- Easy Access On/Off Busy State Avenue



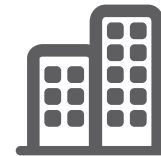
SIGNAGE



Population



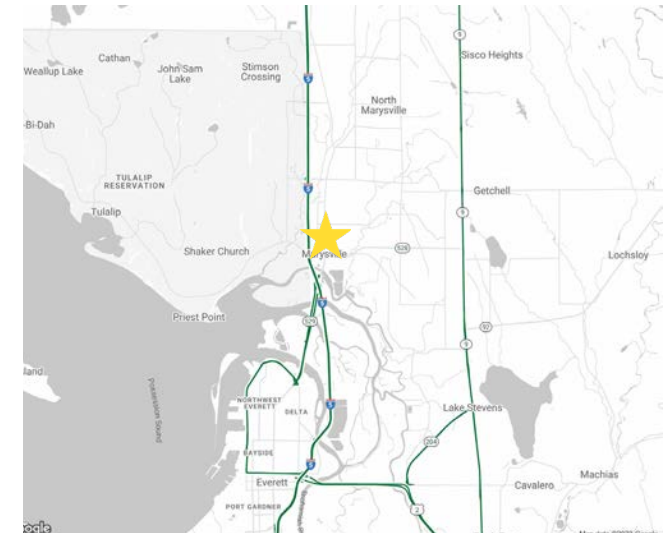
Median HH Income

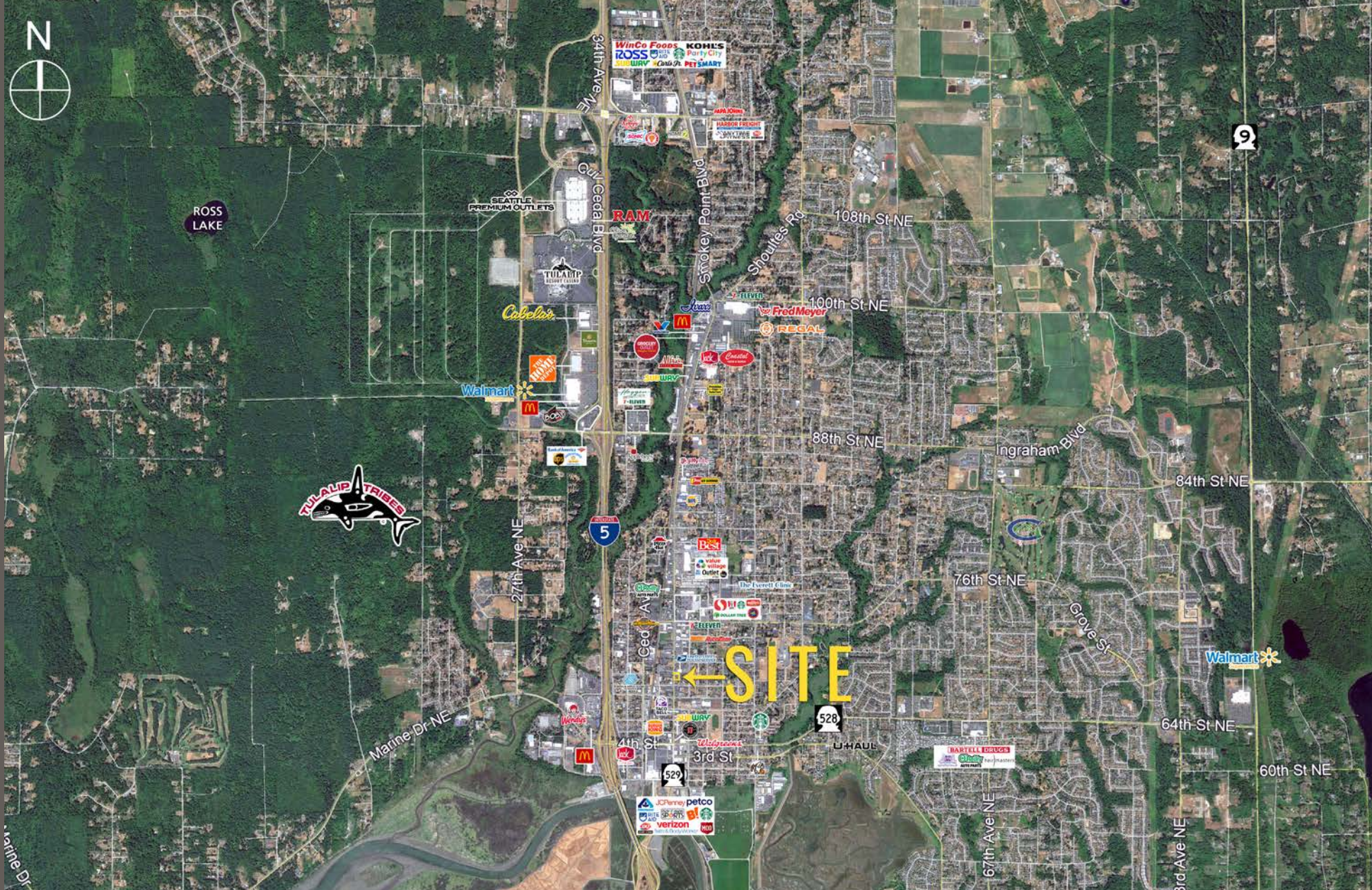


Daytime Population

Regis - 2024

	Population	Median HH Income	Daytime Population
Mile 1	10,532	\$73,162	4,830
Mile 3	55,470	\$101,198	12,640
Mile 5	107,233	\$103,335	28,269





Boeing Expanding 1M SF
in Snohomish County



Located Minutes
from Interstate 5



15,411 ADT
State Avenue



39,646 Households
5 Mile Radius

KIRKLAND | TACOMA | PORTLAND | SEATTLE



RELATIONSHIP FOCUSED. RESULTS DRIVEN.

STEVE ERICKSON

425.822.5522
serickson@fwp-inc.com

DALE GOONG

425.250.3275
dale@fwp-inc.com



First Western Properties, Inc. | 425.822.5522
11621 97th Lane NE Kirkland, WA 98034 | fwp-inc.com

© First Western Properties, Inc. DISCLAIMER: The above information has been secured from sources believed to be reliable, however, no representations are made to its accuracy. Prospective tenants or buyers should consult their professional advisors and conduct their own independent investigation. Properties are subject to change in price and/or availability without notice.