

# 129 COMMERCIAL STREET

Malden, Massachusetts

13,330 SF INDUSTRIAL/FLEX AVAILABLE





# 129 COMMERCIAL STREET

Malden, Massachusetts



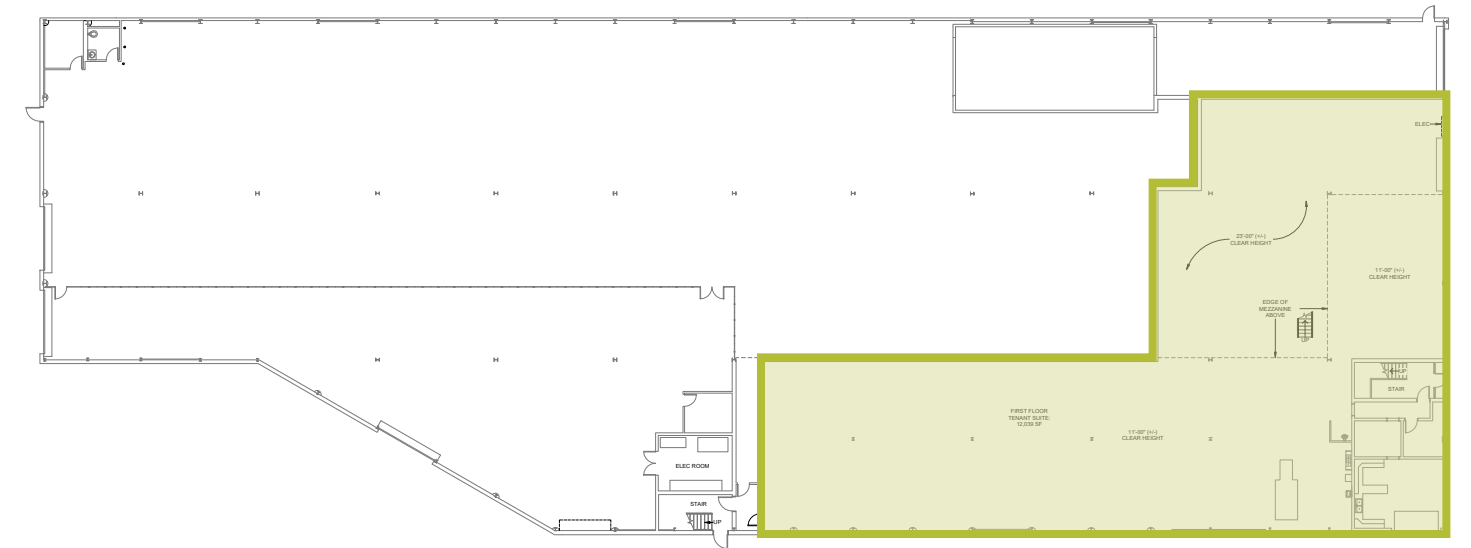
## PROPERTY SPECIFICATIONS

<b>LAND AREA:</b>	1.96 acres
<b>AVAILABLE SF:</b>	Floor 1: 12,039 SF Floor 2: 1,291 SF
<b>PROPERTY TYPE:</b>	Industrial/ Manufacturing
<b>ZONING:</b>	Industrial I
<b>PARKING:</b>	1.00/1,000 SF
<b>CLEAR HEIGHT:</b>	11'-23'
<b>POWER:</b>	1200 Amp @ 480 V, 3-Phase
<b>LOADING:</b>	One (1) Drive In
<b>SPRINKLER:</b>	Wet
<b>UTILITIES:</b>	Water/Sewer: City of Malden Gas: National Grid Electric: Municipal

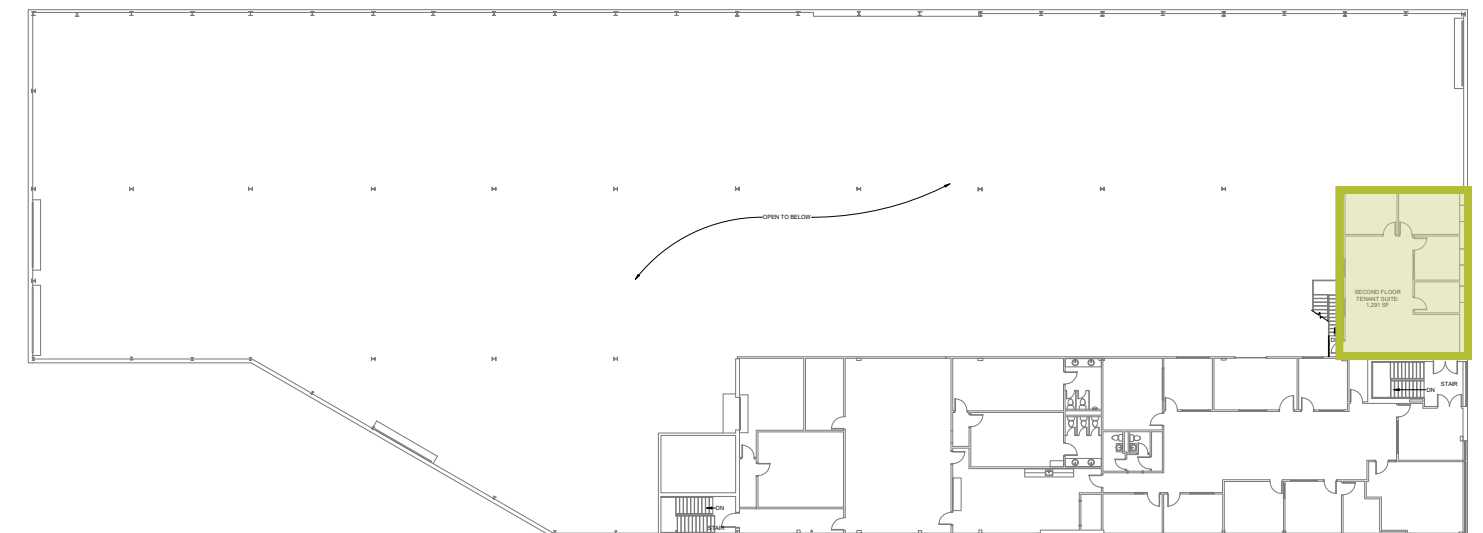


## FLOOR PLANS

### FLOOR 1 | 12,039 SF



### FLOOR 2 | 1,291 SF





# 129 COMMERCIAL STREET

Malden, Massachusetts



## ACCESS



**0.3 Miles** from the Orange Line (Malden Center Station)



**0.3 Miles** from Malden Center Commuter Rail (Haverhill Line)



**Close proximity** to I-93



**15 Minute Drive** to Logan International Airport

## AREA AMENITIES



**Ample Restaurants** in the area



**Hotel options** nearby



Several **Parking** opportunities in walking distance

## CONTACT US TO ARRANGE A TOUR

**TREY AGNEW**

617.549.5149

tagnew@hunnemanre.com

**MICHAEL ALLEN**

617.457.3276

mallen@hunnemanre.com

**TYLER EWING**

617.457.3281

tewing@hunnemanre.com



303 Congress Street, Boston, MA 02210 | 617.457.3400 | [www.hunnemanre.com](http://www.hunnemanre.com)