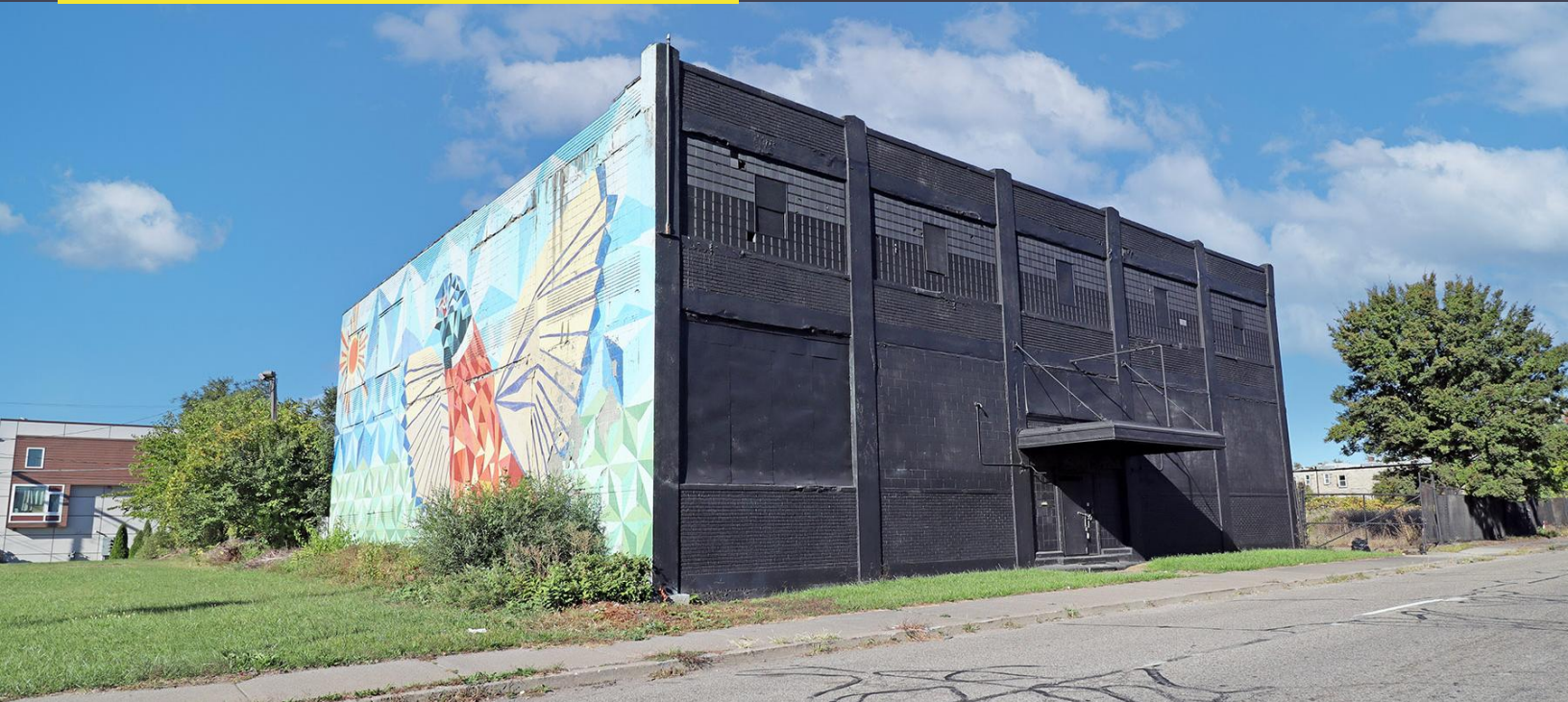


2615 ROSA PARKS BLVD.
DETROIT, MICHIGAN

INDUSTRIAL FOR SALE
13,177 Square Feet Available



**SIGNATURE
ASSOCIATES**
KNOW SIGNATURE | KNOW RESULTS



PROPERTY FEATURES

- 13,177 square feet available
- 10' – 22' clear height
- Corktown redevelopment opportunity
- Prime location
- Sale Price: \$795,000 (\$60.33/sq. ft.)



For more information, please contact:

JOE STACK
(248) 359 0615
jstack@signatureassociates.com

CHRIS MONSOUR
(248) 948 0107
cmonsour@signatureassociates.com

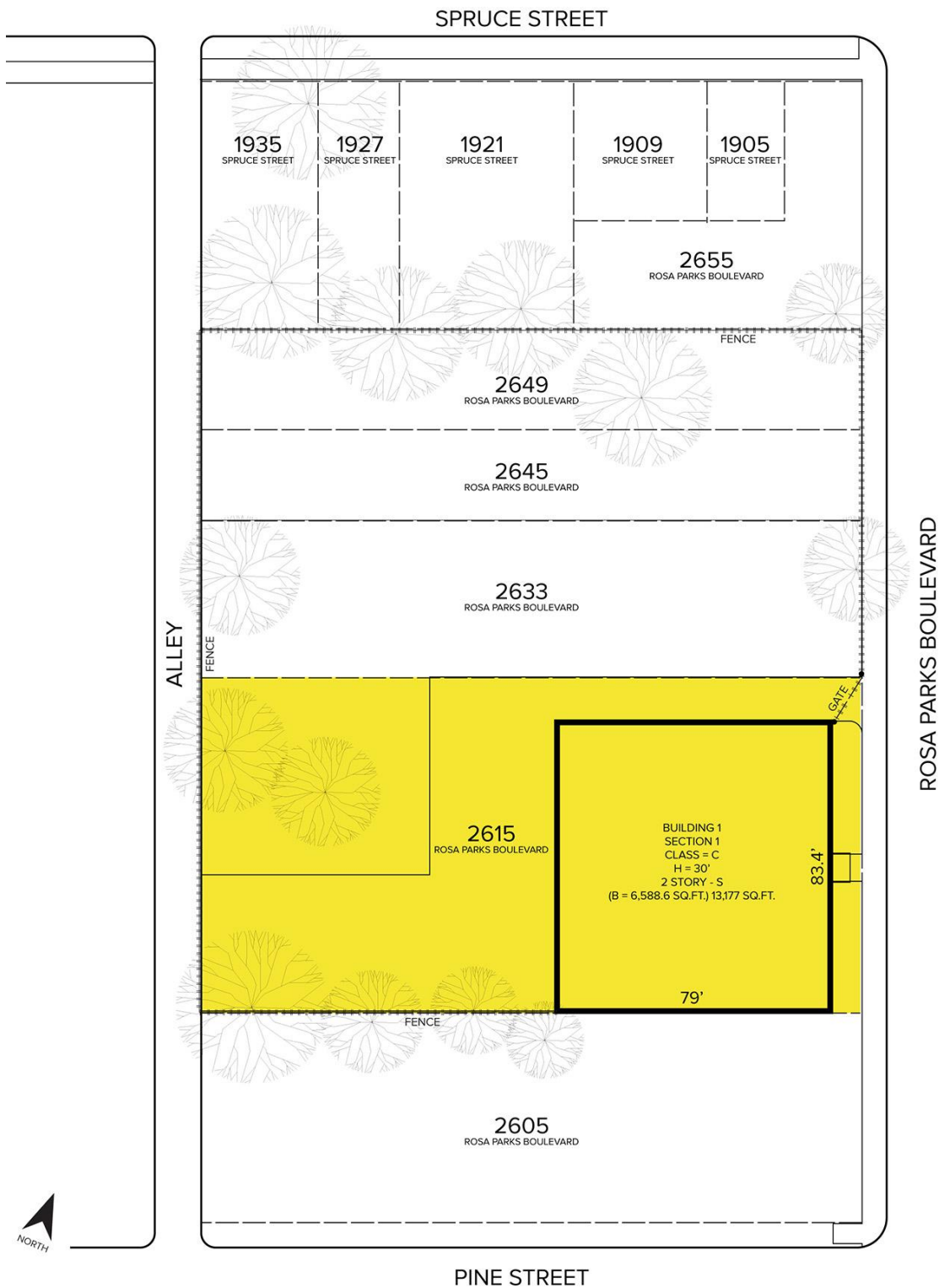
SIGNATURE ASSOCIATES
One Towne Square, Suite 1200
Southfield, MI 48076
www.signatureassociates.com

2615 Rosa Park Boulevard – Detroit, Michigan

Industrial For Sale

13,177
Square Feet
AVAILABLE

Site Plan



For more information, please contact:

JOE STACK
(248) 359 0615
jstack@signatureassociates.com

CHRIS MONSOUR
(248) 948 0107
cmonsour@signatureassociates.com

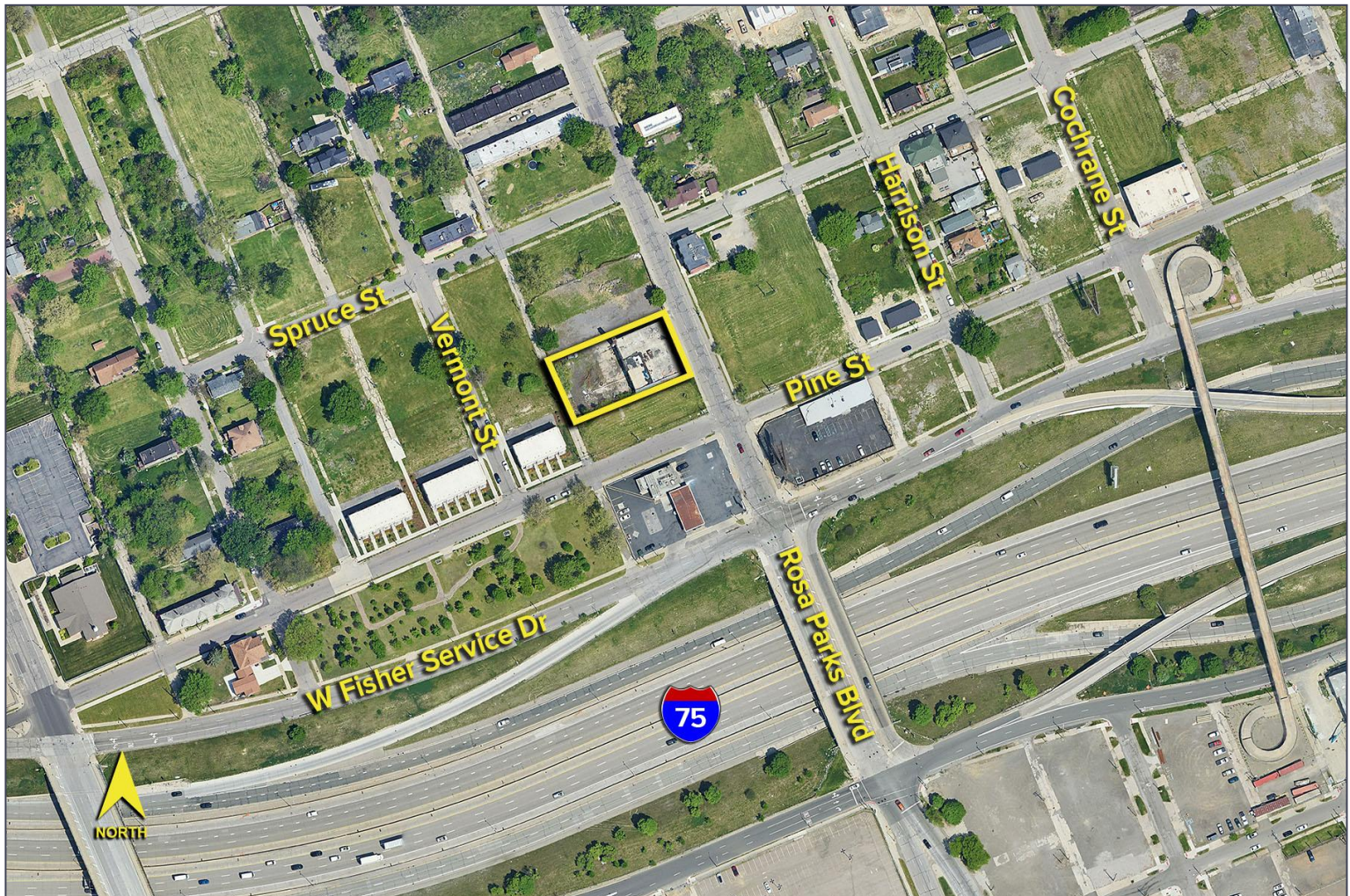
SIGNATURE ASSOCIATES
One Towne Square, Suite 1200
Southfield, MI 48076
www.signatureassociates.com

2615 Rosa Park Boulevard – Detroit, Michigan

Industrial For Sale

13,177
Square Feet
AVAILABLE

Aerial



For more information, please contact:

JOE STACK
(248) 359 0615
jstack@signatureassociates.com

CHRIS MONSOUR
(248) 948 0107
cmonsour@signatureassociates.com

SIGNATURE ASSOCIATES
One Towne Square, Suite 1200
Southfield, MI 48076
www.signatureassociates.com

Information is subject to verification and no liability for errors or omissions is assumed. Price is subject to change and listing withdrawal.