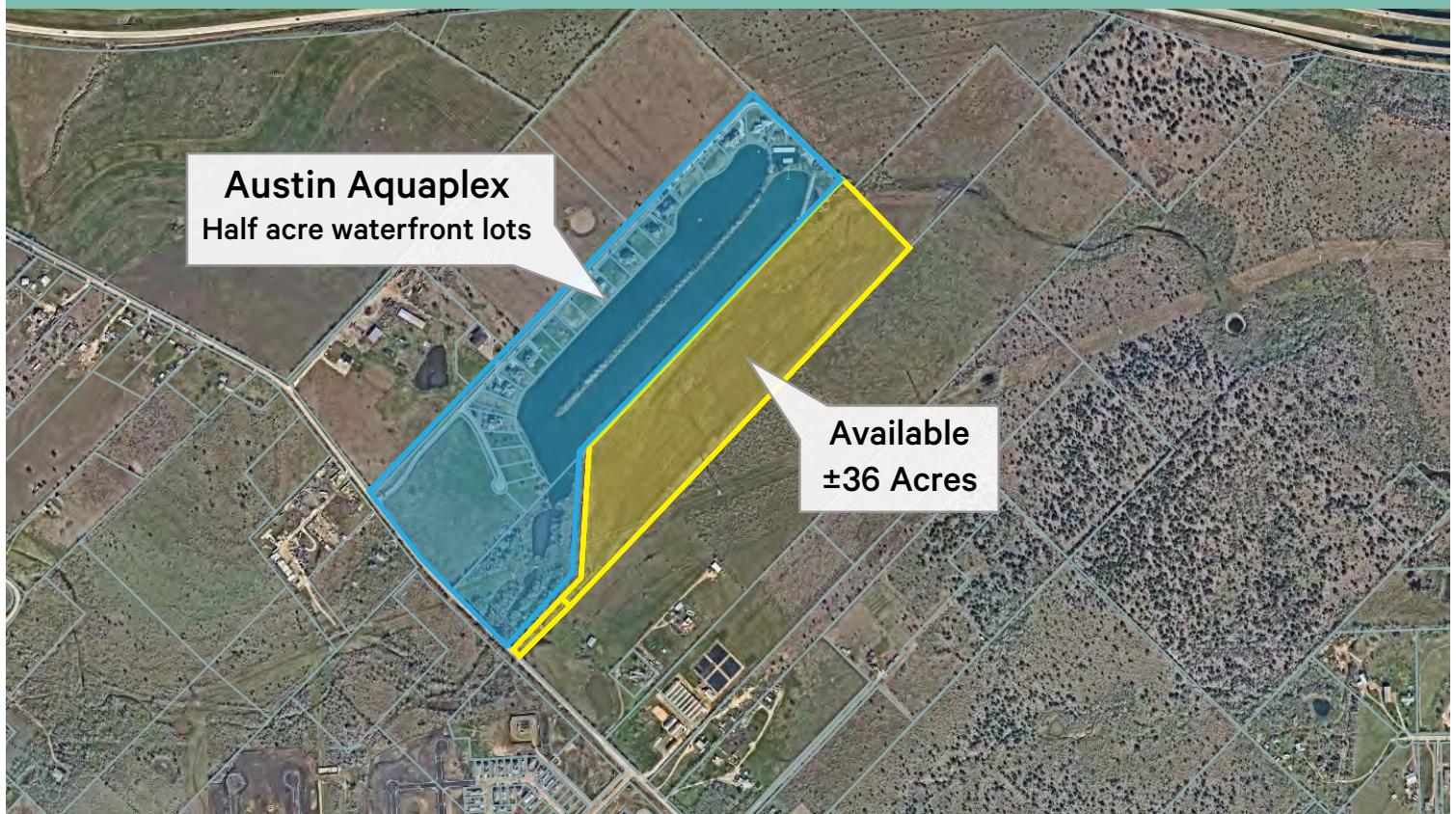


Mustang Ridge Land

SWQ OF TX-45 & HWY 183
6600 Old Lockhart Rd
Buda, TX 78610
www.cbre.com

AVAILABLE LAND - ±36 Acres



Property Highlights

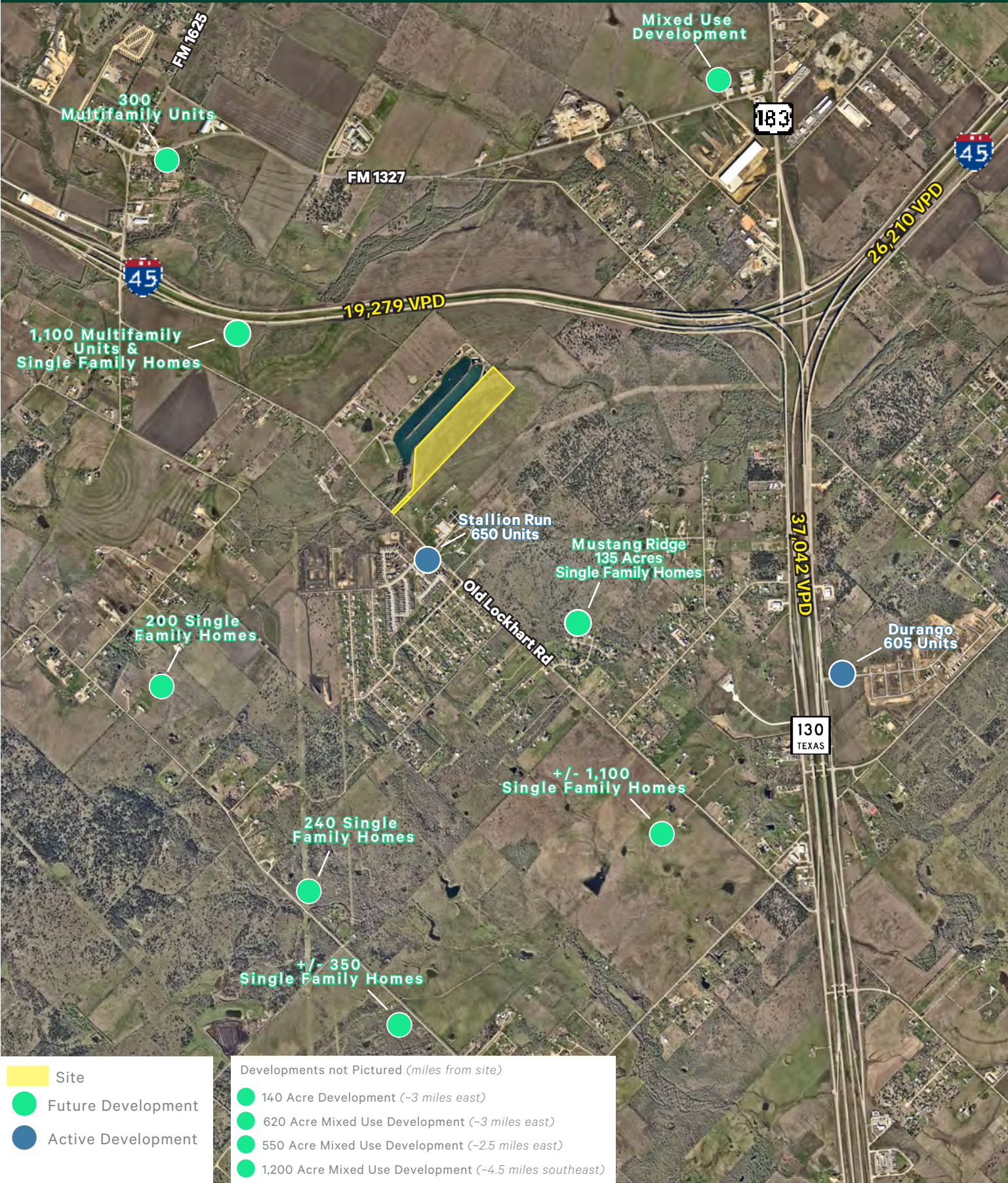
- + Poised for rapid growth
- + Close proximity to Austin-Bergstrom International Airport, downtown Austin, and Tesla Gigafactory
- + Unrestricted Land
- + Located in Mustang Ridge ETJ
- + Utilities available 3Q 2025
- + +/- 30 buildable acres
- + **Sale Price: \$1,450,000**
- + Across from brand new Stallion Run
- 650+ homes at completion

Nearby Retailers



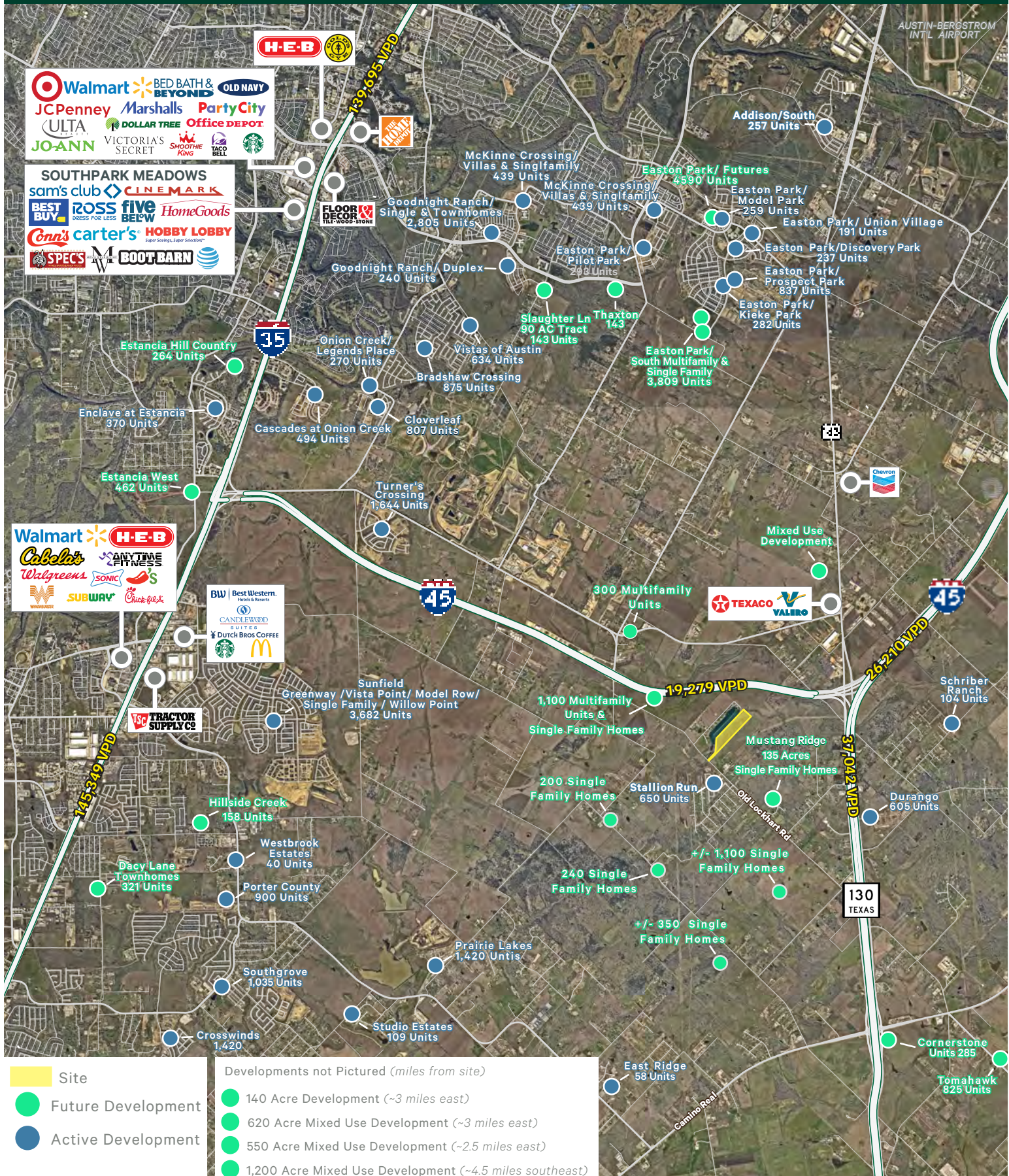
Mustang Ridge Land

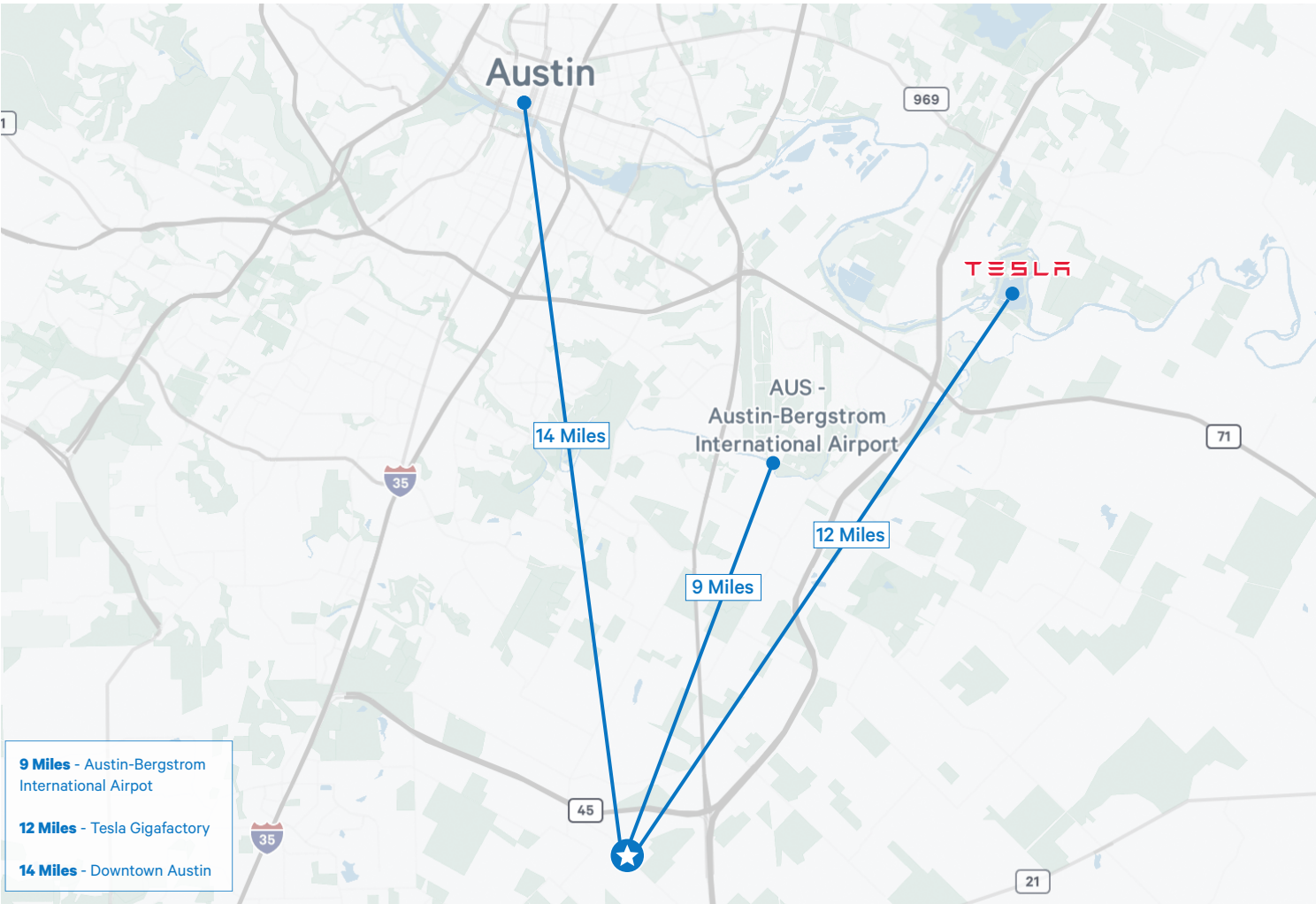
SWQ OF TX-45 & HWY 183
6600 OLD LOCKHART ROAD | BUDA, TX 78610



Mustang Ridge Land

SWQ OF TX-45 & HWY 183
6600 OLD LOCKHART ROAD | BUDA, TX 78610





2024 Demographics	1 Mile	3 Miles	5 Miles
Population	1,415	4,639	14,786
Daytime Population	955	4,286	11,277
Median Age	36.0	35.4	34.3
Average Household Income	\$114,616	\$114,955	\$125,728
Average Household Size	3.45	3.31	3.25
2024-2029 Annual Population Growth Rate	17.13%	12.88%	7.77%

Traffic Counts	
State HWY 130	37,042 VPD
I-45	26,210 VPD
Source: TxDot	

Contact Us

Carson Hawley
Vice President
+1 512 482 5601
carson.hawley@cbre.com

© 2025 CBRE, Inc. All rights reserved. This information has been obtained from sources believed reliable, but has not been verified for accuracy or completeness. You should conduct a careful, independent investigation of the property and verify all information. Any reliance on this information is solely at your own risk. CBRE and the CBRE logo are service marks of CBRE, Inc. All other marks displayed on this document are the property of their respective owners, and the use of such logos does not imply any affiliation with or endorsement of CBRE. Photos herein are the property of their respective owners. Use of these images without the express written consent of the owner is prohibited.