

# 64 WEST 125TH

BETWEEN 5TH & LENOX AVE | HARLEM



# 64 WEST 125TH

BETWEEN 5TH & LENOX AVE | HARLEM

## PROPERTY HIGHLIGHTS

- Former *Arkade NYC*
- Can be divided into two 1,200 SF spaces
- Dense commercial & residential area
- Heavy foot traffic on 125th St
- Accessible by all major transportation
- Great for Coffee Shop, Cafe, Bakery, Spa, Boutique, Nails, Hair, Office, Service related business
- Neighboring tenants include: *TJ Maxx, Checkers, Carver Savings, Buffalo Wild Wings, Cohen's Optical, Shake Shack, City MD, Whole Foods, Kennedy Fried Chicken, Nike United, Fluffies Hot Chicken, Raising Caine's, Panda Express, Pandora, Sephora, Trader Joe's, Target*

### SIZE

Ground Floor 2,400 SF  
+ Full Basement

### FRONTAGE

20'

### CEILING HEIGHTS

15'

### ASKING RENT

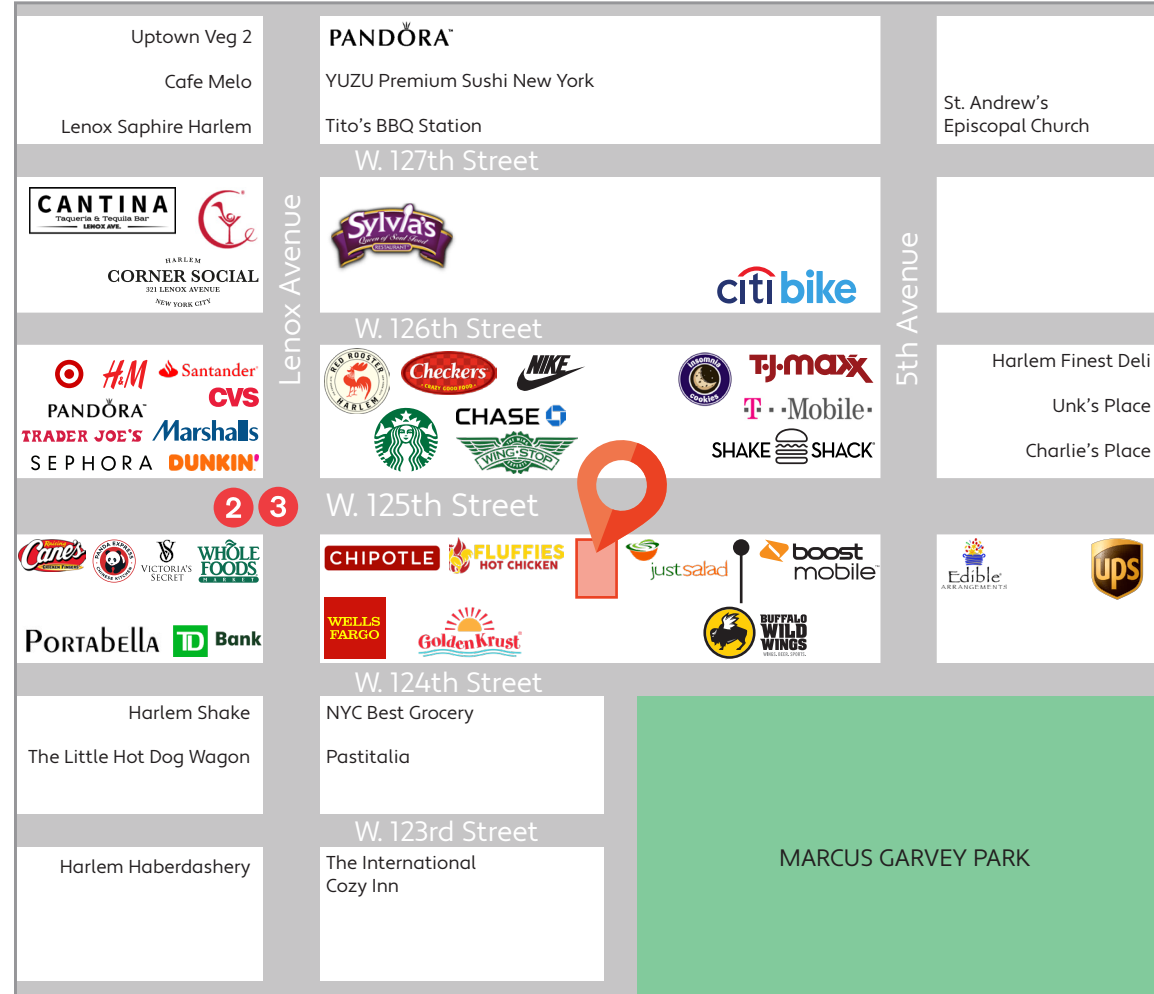
Upon Request

### POSSESSION

Immediate

### TRANSPORTATION

2 3



CONTACT OUR BROKERS FOR MORE INFORMATION

**ALBERT MANOPLA**  
AManopla@ksrny.com

212.380.8369

**JACK KHASKI**  
JackK@ksrny.com

917.355.0559

**HUNTER LAZAN**  
HLazan@ksrny.com

772.559.5195

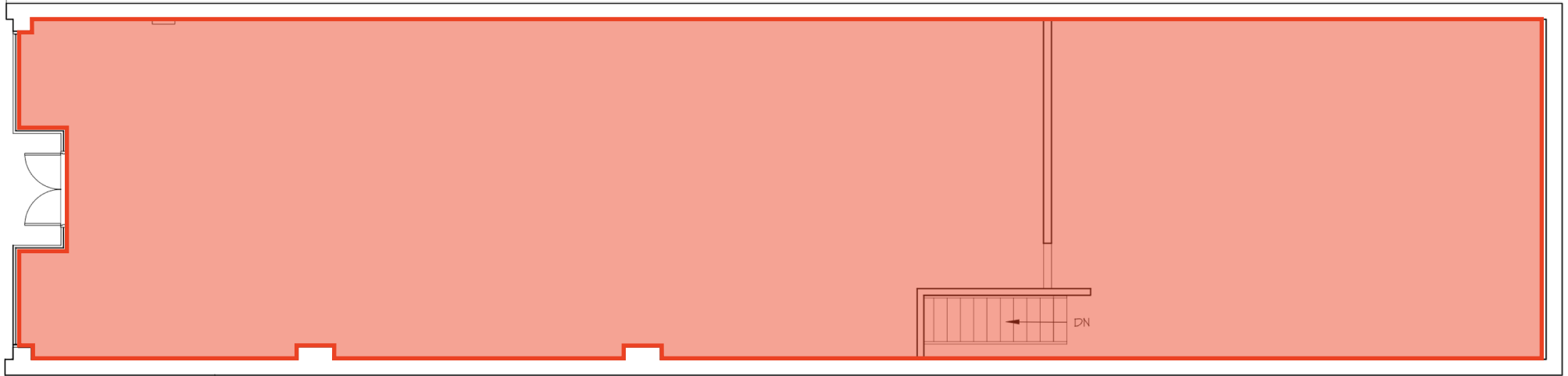


All information supplied in this marketing presentation and/or flyer is from sources deemed reliable and is furnished subject to errors, omissions, modifications, removal of listings from sale/lease and to any listing condition. Any square footage, dimensions, floor plans and/or technical data set forth are approximations and are subject to further elaboration/confirmation.

# 64 WEST 125<sup>TH</sup>

BETWEEN 5<sup>TH</sup> & LENOX AVE | HARLEM

GROUND FLOOR - 2,400 SF



BASEMENT



CONTACT OUR BROKERS FOR MORE INFORMATION

**ALBERT MANOPLA**  
AManopla@ksrny.com

212.380.8369

**JACK KHASKI**  
JackK@ksrny.com

917.355.0559

**HUNTER LAZAN**  
HLazan@ksrny.com

772.559.5195

All information supplied in this marketing presentation and/or flyer is from sources deemed reliable and is furnished subject to errors, omissions, modifications, removal of listings from sale/lease and to any listing condition. Any square footage, dimensions, floor plans and/or technical data set forth are approximations and are subject to further elaboration/confirmation.

