



STREET COMMERCIAL REAL ESTATE, LLC

522 Lander St #200 Reno, NV 89509

(775) 852-5225

www.street-cre.com

FOR LEASE

**7930 SUGAR PINE CT
RENO, 89523**

STE A & STE B



Matthew Harris
Principal - Broker
Matt.Harris@street-cre.com
NV RE #B.1002868
O: (775) 852-5225 Ext 1002
C: (775) 250-4684



Ben Harris
Principal
Ben.Harris@street-cre.com
NV RE #S.0187049
O: (775) 852-5225 Ext 1001
C: (775) 221-6846



Christian Stolo
Industrial Associate
Christian.Stolo@street-cre.com
NV RE #S.0196067
O: (775) 852-5225 Ext 1003
C: (775) 842-7450

Property Details



Street Commercial Real Estate is pleased to present this 23,244 flex industrial building for lease. This multi-tenanted building is located in the desirable West Reno sub-market and is 1.5 Mi to I-80, making it conveniently close to the main vessel into Northern California and Downtown Reno. This property is currently comprised of a 7,693 SF unit and a 15,551 SF unit but can be combined for a single occupier. Neighboring tenants include Patagonia, BeaverFit, and Nutrient Survival.

- APN 212-050-09
- 23,244 Total SF
- 5 Grade Level Doors 1400+
- Amps 3 Phase Power Built in
- Built 1997
- Option for Fenced Yard

Location

I-80 Freeway



Location Highlights

- West Reno Industrial Submarket
- Quick Access to I-80
- Along West Bank of Truckee River
- MUW4 Zoning allows for wide range of uses

7930 Sugar Pine Ct



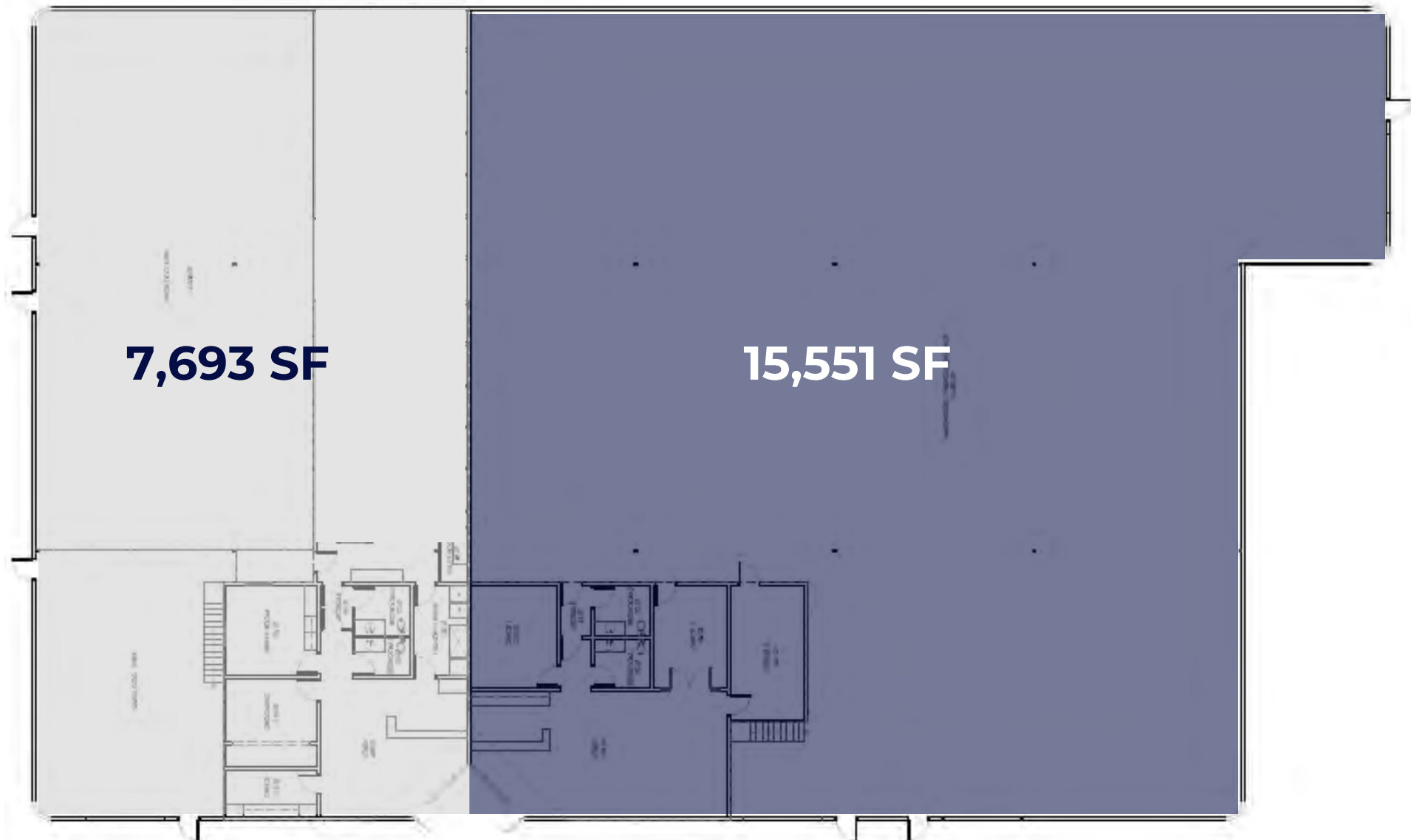
Truckee River

Property Details



SUITE A

SUITE B



7,693 SF

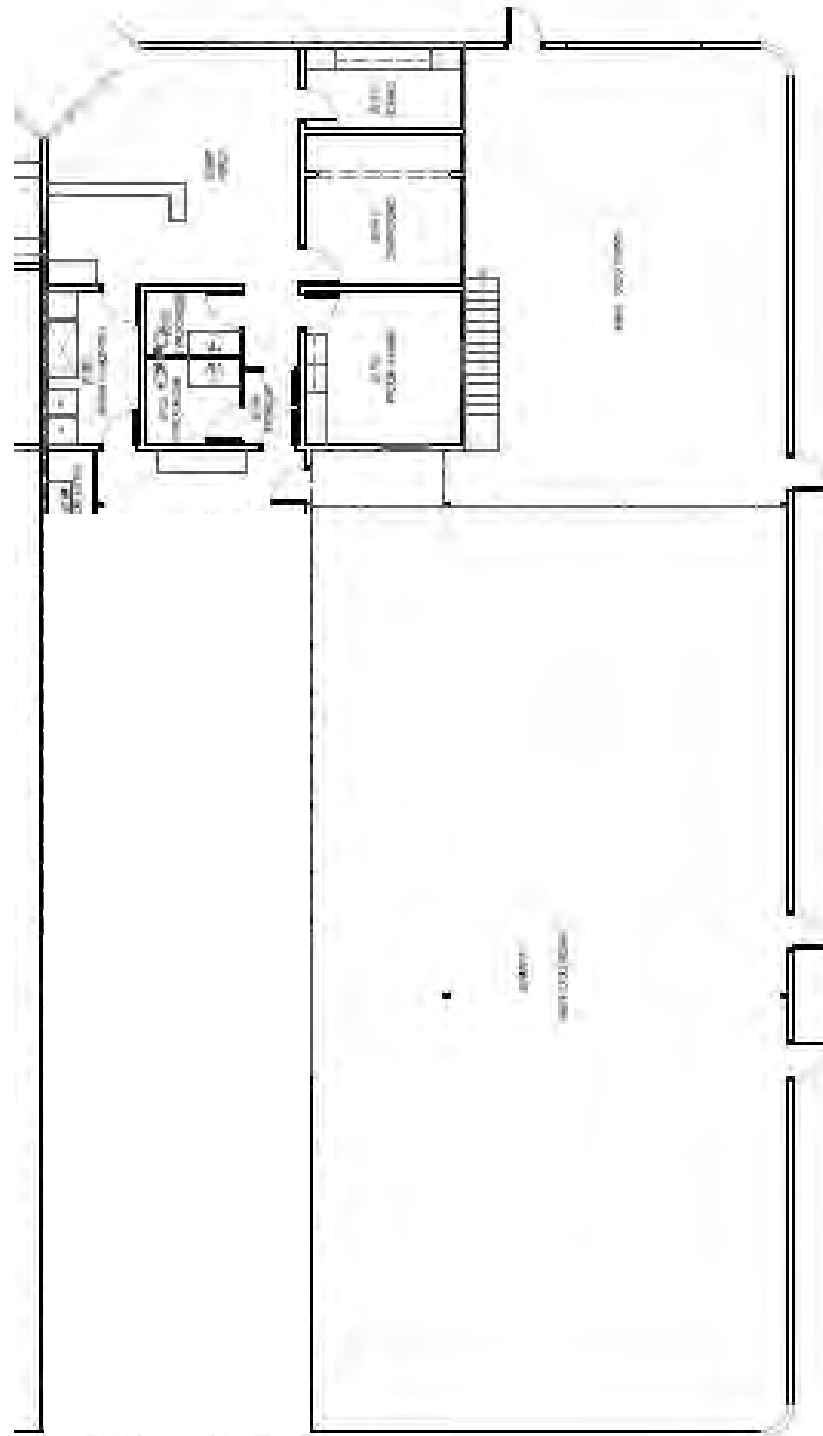
15,551 SF

Suite A



Unit Features

- 7,693 SF
- +/- 1,272 SF of Office
- 18' Clear Height
- 400 AMP (TBV)
- (2) Drive in Doors

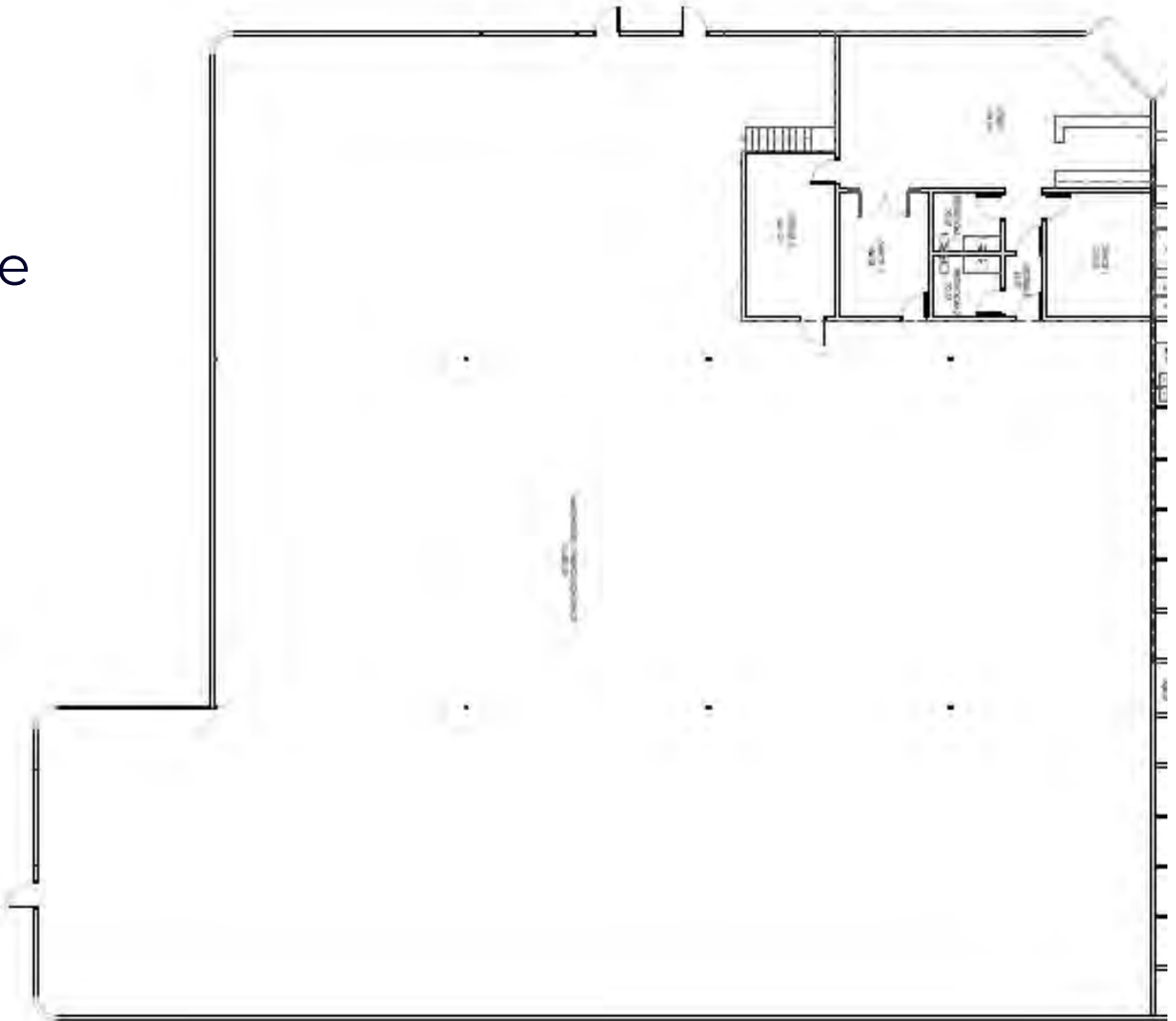


Suite B



Unit Features

- 15,551 SF
- +/- 1,600 SF of Office
- 18' Clear Height
- 1,600 AMP (TBV)
- (4) Drive in Doors
- Option for (1) Dock High
- Option for Fenced Yard



Photos



Contact Us



522 Lander St #200
Reno, NV 89509



(775) 852-5225



www.street-cre.com



admin@street-cre.com



For any questions regarding the industrial market here in the Reno area, or inquiries on a specific property, contact us today!



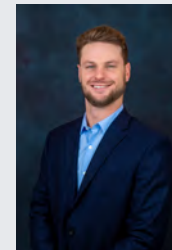
Matthew Harris

Principal - Broker
Matt.Harris@street-cre.com
NV RE #B.1002868
O: (775) 852-5225 Ext 1002
C: (775) 250-4684



Ben Harris

Principal
Ben.Harris@street-cre.com
NV RE #S.0187049
O: (775) 852-5225 Ext 1001
C: (775) 221-6846



Christian Stolo

Industrial Associate
Christian.Stolo@street-cre.com
NV RE #S.0196067
O: (775) 852-5225 Ext 1003
C: (775) 842-7450