

6480 STATE STREET SAGINAW, MICHIGAN

RETAIL FOR SALE
2,500 Square Feet Available



**SIGNATURE
ASSOCIATES**
KNOW SIGNATURE | KNOW RESULTS



PROPERTY FEATURES

- 2,500 square feet available
- (3) 12' x 10' grade level doors
- 136' of frontage
- Yard space
- Great exposure
- Can be purchased with adjoining properties 6464 State Street and 6470 State Street
- Sale Price: \$225,000 (\$90.00/sq. ft.)



For more information, please contact:

JOE HAMWAY
(248) 948 0113
jhamway@signatureassociates.com

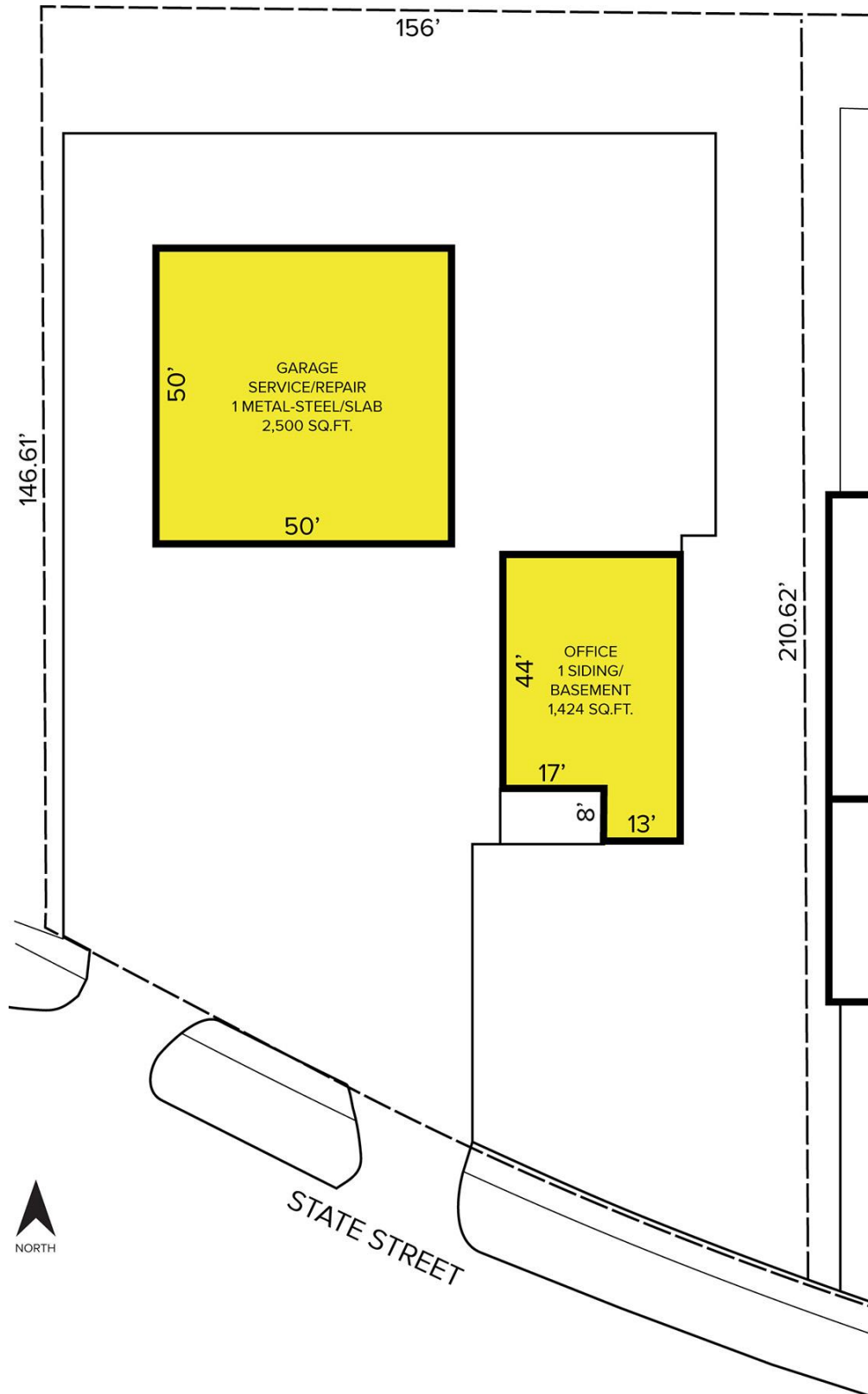
SIGNATURE ASSOCIATES
One Towne Square, Suite 1200
Southfield, MI 48076
www.signatureassociates.com

6480 State Street – Saginaw, Michigan

Retail For Sale

2,500
Square Feet
AVAILABLE

Site Plan



For more information, please contact:

JOE HAMWAY
(248) 948 0113
jhamway@signatureassociates.com

SIGNATURE ASSOCIATES
One Towne Square, Suite 1200
Southfield, MI 48076
www.signatureassociates.com

6480 State Street – Saginaw, Michigan

Retail For Sale

2,500
Square Feet
AVAILABLE



DEMOGRAPHICS

	POPULATION	MED. HH INCOME
1 MILE	6,046	\$69,807
3 MILE	42,738	\$78,039
5 MILE	83,319	\$65,414

TRAFFIC COUNTS (TWO-WAY)

42,050	State St. E. of Midland Rd.
26,586	State St. W. of Midland Rd.
24,379	Midland Rd. N. of State St.
34,480	Midland Rd. S. of State St.



For more information, please contact:

JOE HAMWAY
(248) 948 0113
jhamway@signatureassociates.com

SIGNATURE ASSOCIATES
One Towne Square, Suite 1200
Southfield, MI 48076
www.signatureassociates.com