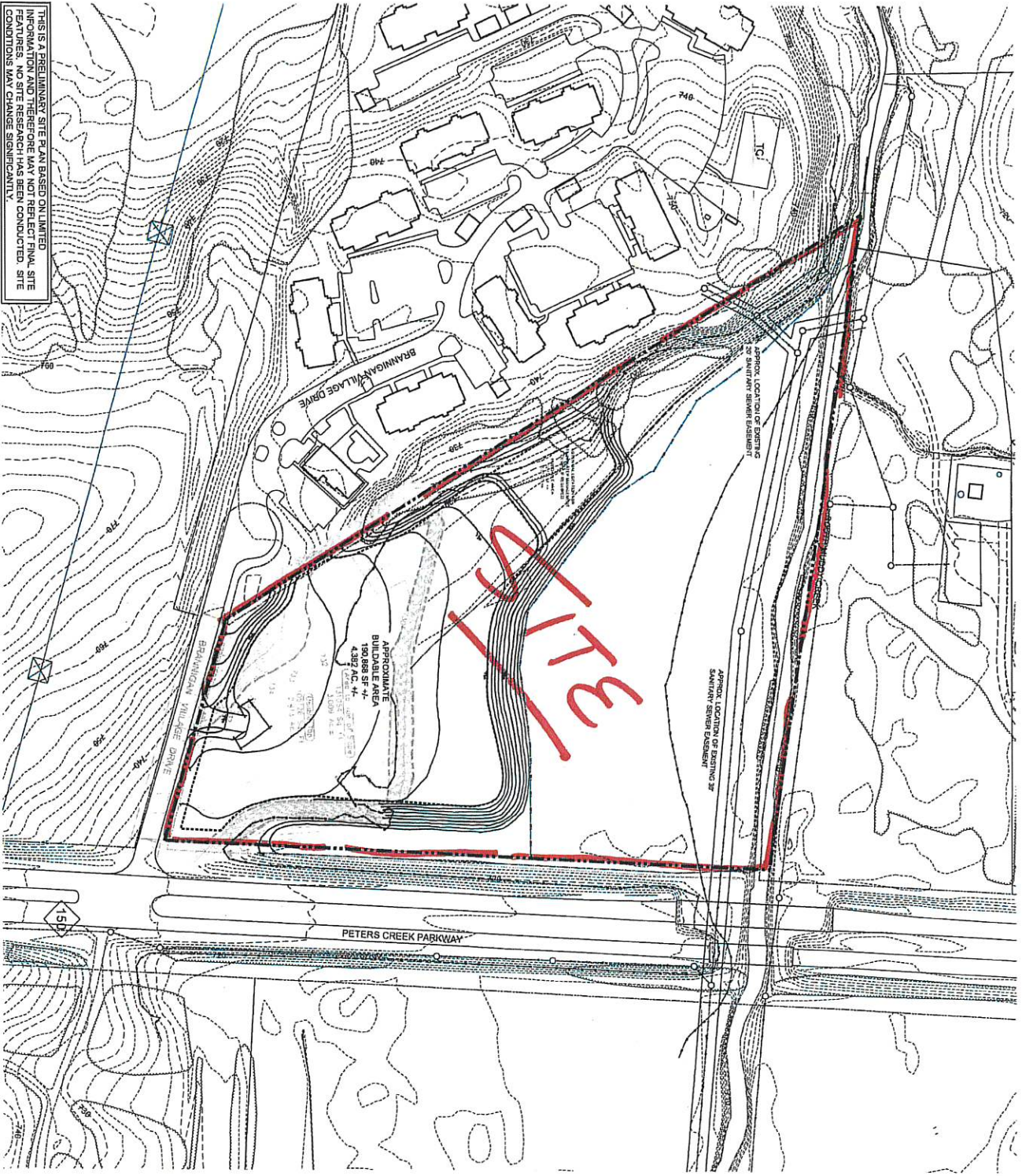


THIS IS A PRELIMINARY SITE PLAN BASED ON LIMITED INFORMATION AND THEREFORE MAY NOT REFLECT FINAL SITE FEATURES. NO SITE RESEARCH HAS BEEN CONDUCTED. SITE CONDITIONS MAY CHANGE SIGNIFICANTLY.



SITE DATA

SITE ACRES: 15.07 AC +/-
EXISTING PAVED ACRES: 15.07 AC +/-

BUILDABLE AREA: 4,302 AC +/-
 IF IMPERVIOUS AREA FOR THE TOTAL SITE IS GREATER THAN 24% 0.75 AC +/- STORMWATER MANAGEMENT SHALL BE REQUIRED

BUILDABLE AREA WITH STORMWATER: 4,302 AC +/-
 (Impervious area allowed shall be determined by zoning district.)

BUILDABLE AREA WITHOUT STORMWATER: 4,302 AC +/-
 (Allows up to 76.75% of buildable area to be impervious.)

**Brannigan Partners -
 Peters Creek Pkwy.**
 Forsyth County, NC 94/06/10

Buildable Area Map

Prepared for:
 Brannigan Partners, LLC
 5003 County Club Road
 Winston-Salem, NC 27154
 (336) 733-1517

Project #: 10-059
 Prepared by:

Stimmel
 Landscape Architecture
 Civil Engineering
 Stimmel Associates, PA Land Planning

501 N. Stone Street
 Suite 200
 Winston-Salem, NC 27101-2515
 P 336 733 1517
 F 336 733 1088

