

24-25 46th Street

Astoria, New York

13,363 SF Available for Sub-Lease



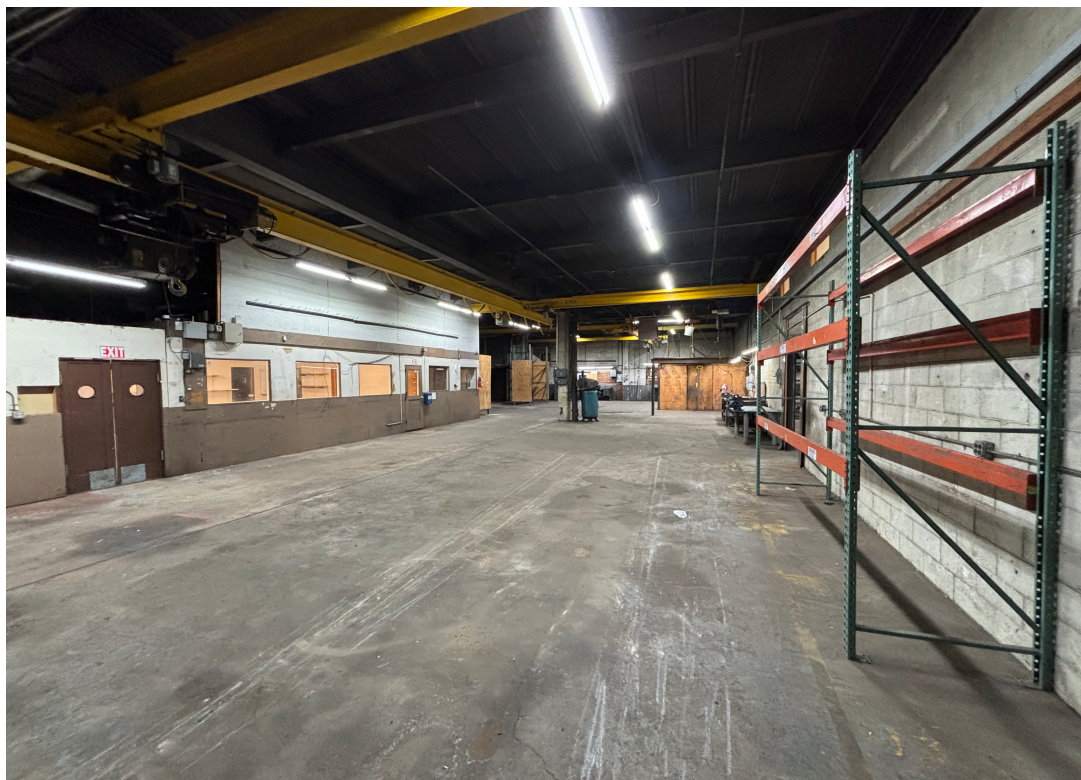
Space Details

- + Available Space: 13,363 SF
- + Sublease Thru March 2029 - Long term options available
- + Loading: 3 Drive In's 12FTx 12FT
- + Ceiling Height: 14.5' Clear, Multiple Cranes 1T to 3T Weight capacity
- + Small Office component
- + Asking Rent: Upon request

Location Details

- + Located just off the Grand Central Pkwy
- + 1.6 Miles to LaGuardia Airport
- + 2.8 Miles to the on ramp for Ed Koch Queensboro Bridge
- + 11.5 Miles to JFK Airport

Space Photos

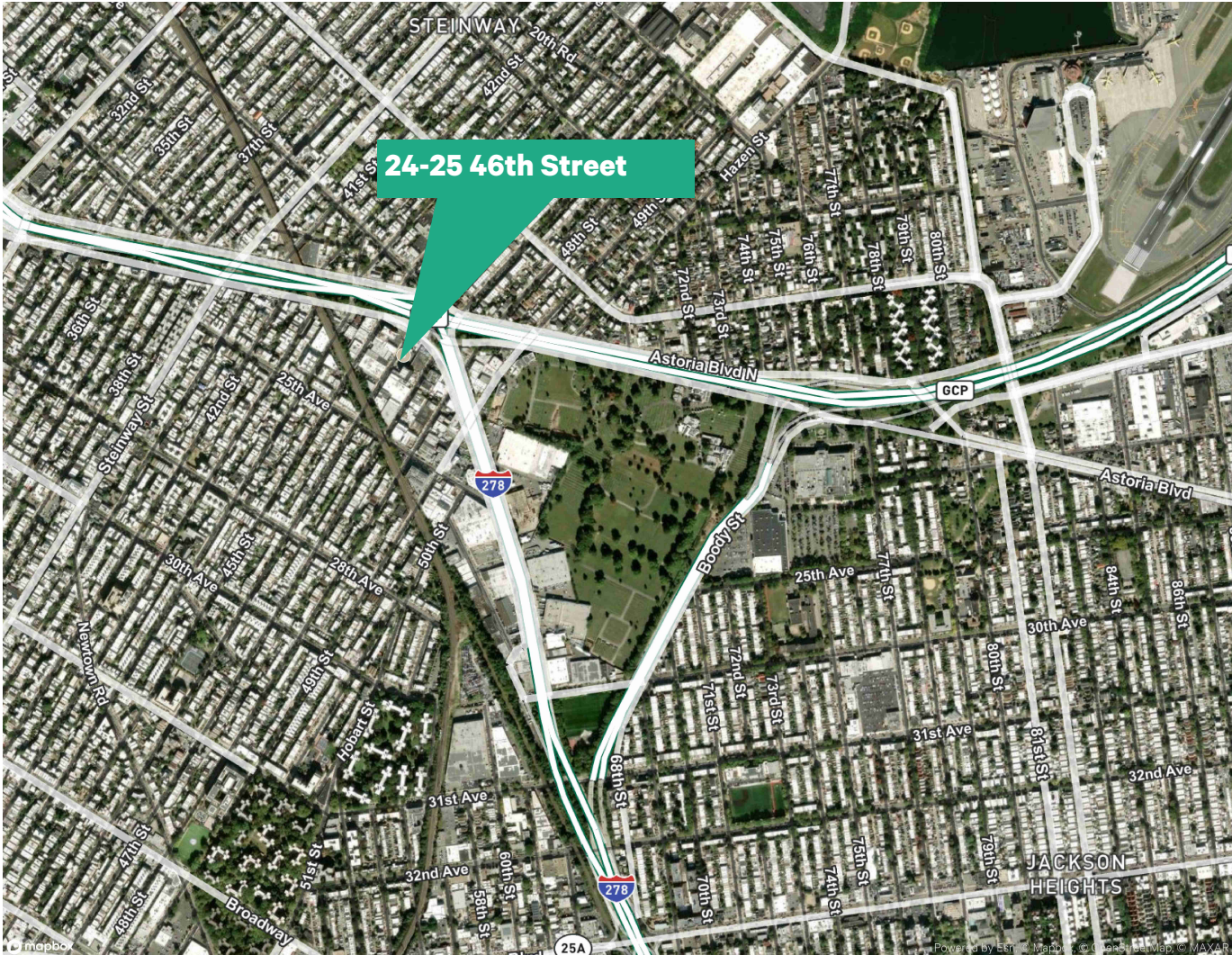


24-25 46th Street

Astoria, New York

For Lease

Location Map



Contact Us

Paul Leone

Senior Vice President

+1 516 582 2663

paul.leone@cbre.com

Jonathan Blake

Senior Associate

+1 516 884 0631

jonathan.blake@cbre.com

© 2025 CBRE, Inc. All rights reserved. This information has been obtained from sources believed reliable, but has not been verified for accuracy or completeness. You should conduct a careful, independent investigation of the property and verify all information. Any reliance on this information is solely at your own risk. CBRE and the CBRE logo are service marks of CBRE, Inc. All other marks displayed on this document are the property of their respective owners, and the use of such logos does not imply any affiliation with or endorsement of CBRE. Photos herein are the property of their respective owners. Use of these images without the express written consent of the owner is prohibited.

