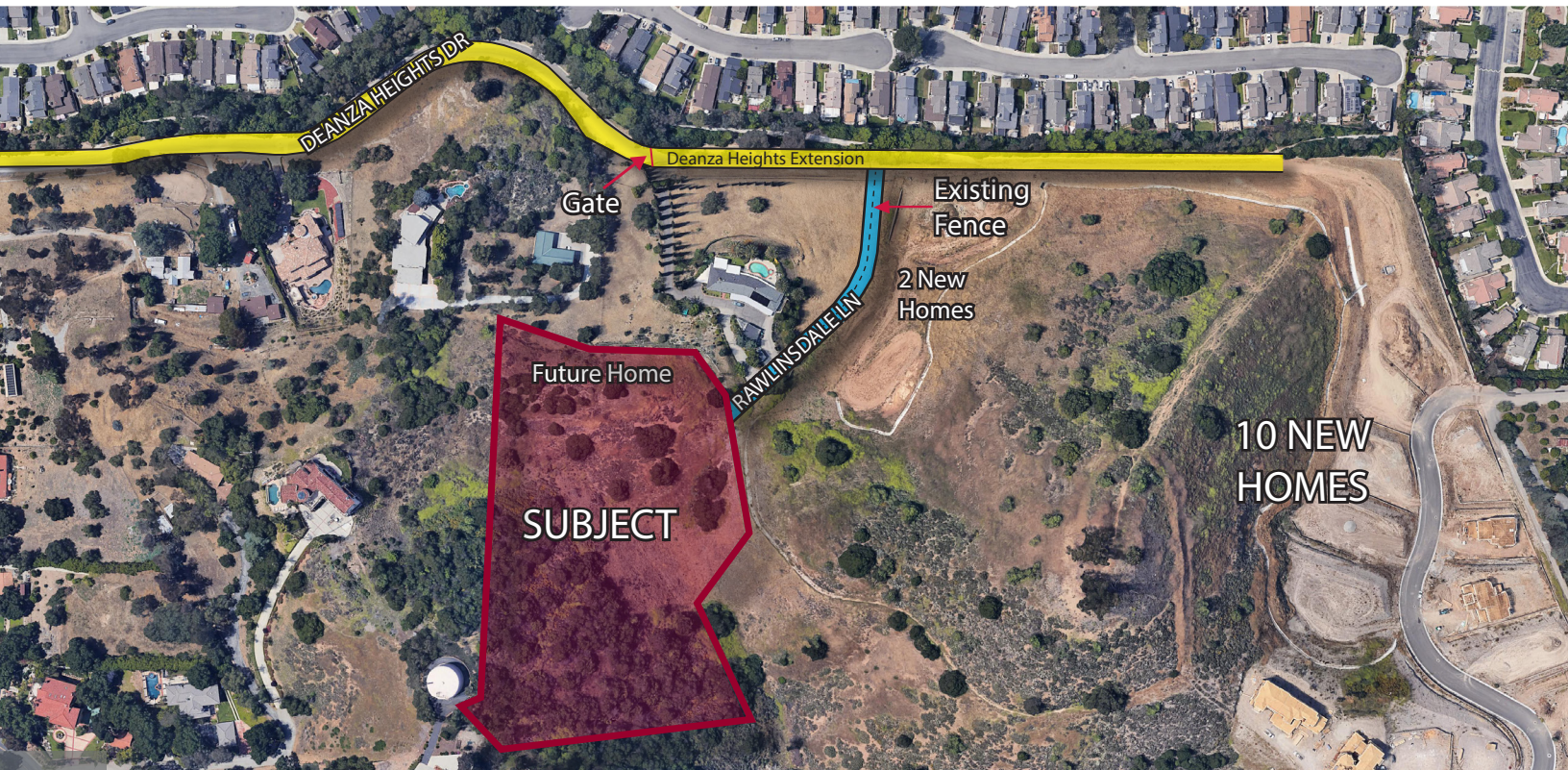


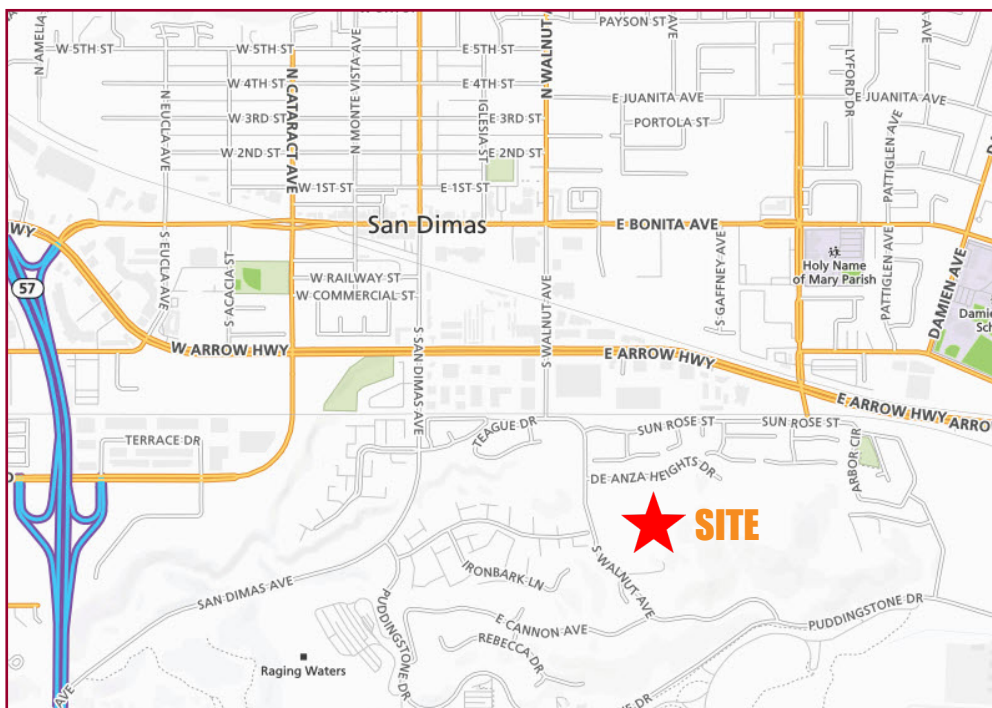


100 RAWLINSDALE LN. SAN DIMAS, CA. 91773



FEATURES:

- 6.23 Acres of Land
- Single Family Zoning
- 1.5 - 3 Acre Lots
- Adjacent to 15 Lot Development
- SF-H/PH Zoning
- APN: 8382-011-022



LEE & ASSOCIATES

COMMERCIAL REAL ESTATE SERVICES

3535 Inland Empire Blvd. • Ontario, CA 91764
ph: 909.989.7771 fx: 909.944.8250
www.lee-assoc.com | Corporate ID # 00976995

TODD LAUNCHBAUGH

909.373.2911

tlaunchbaugh@lee-assoc.com

License #01059250

All information furnished regarding property for sale, rental or financing is from sources deemed reliable, but no warranty or representation is made to the accuracy thereof and same is submitted to errors, omissions, change of price, rental or other conditions prior to sale, lease or financing or withdrawal without notice. No liability of any kind is to be imposed on the broker herein.



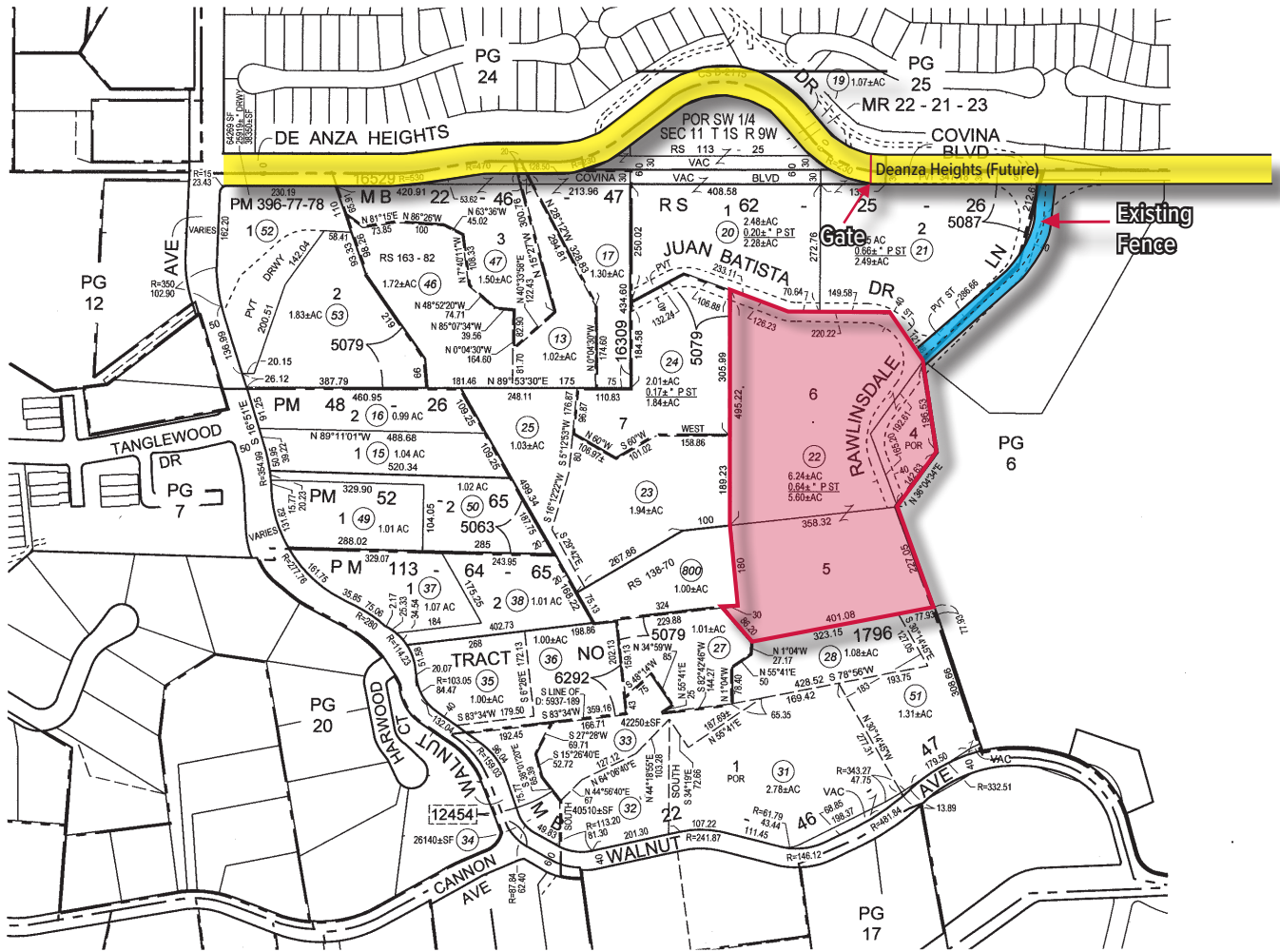
100 RAWLINSDALE LN. SAN DIMAS, CA. 91773

8382	11 SHEET	P. A. 8382-11	TRA 5087 16309 5063 6292 16529 5079 12454	REVISED 91052902015001-06 92040102006001-06	93032502019002-06 93032502019004-06 93111804003001-06	960816 1998121103 2001011708001001-06	20021118 20060216 20150105	20160302 2018050973005001-06 2018111328-06	SEARCH NO	OFFICE OF THE ASSESSOR COUNTY OF LOS ANGELES COPYRIGHT © 2002
------	----------	---------------	---	---	---	---	----------------------------------	--	-----------	---

2019



MAPPING AND GIS SERVICES
SCALE 1" = 200'



ate Printed: 11/13/2018 11:20:05 AM



LEE & ASSOCIATES

COMMERCIAL REAL ESTATE SERVICES

3535 Inland Empire Blvd. • Ontario, CA 91764
ph: 909.989.7771 fx: 909.944.8250
www.lee-assoc.com | Corporate ID # 00976995

TODD LAUNCHBAUGH

909.373.2911

tlaunchbaugh@lee-assoc.com

License #01059250

All information furnished regarding property for sale, rental or financing is from sources deemed reliable, but no warranty or representation is made to the accuracy thereof and same is submitted to errors, omissions, change of price, rental or other conditions prior to sale, lease or financing or withdrawal without notice. No liability of any kind is to be imposed on the broker herein.