

PEA RIDGE COMMONS

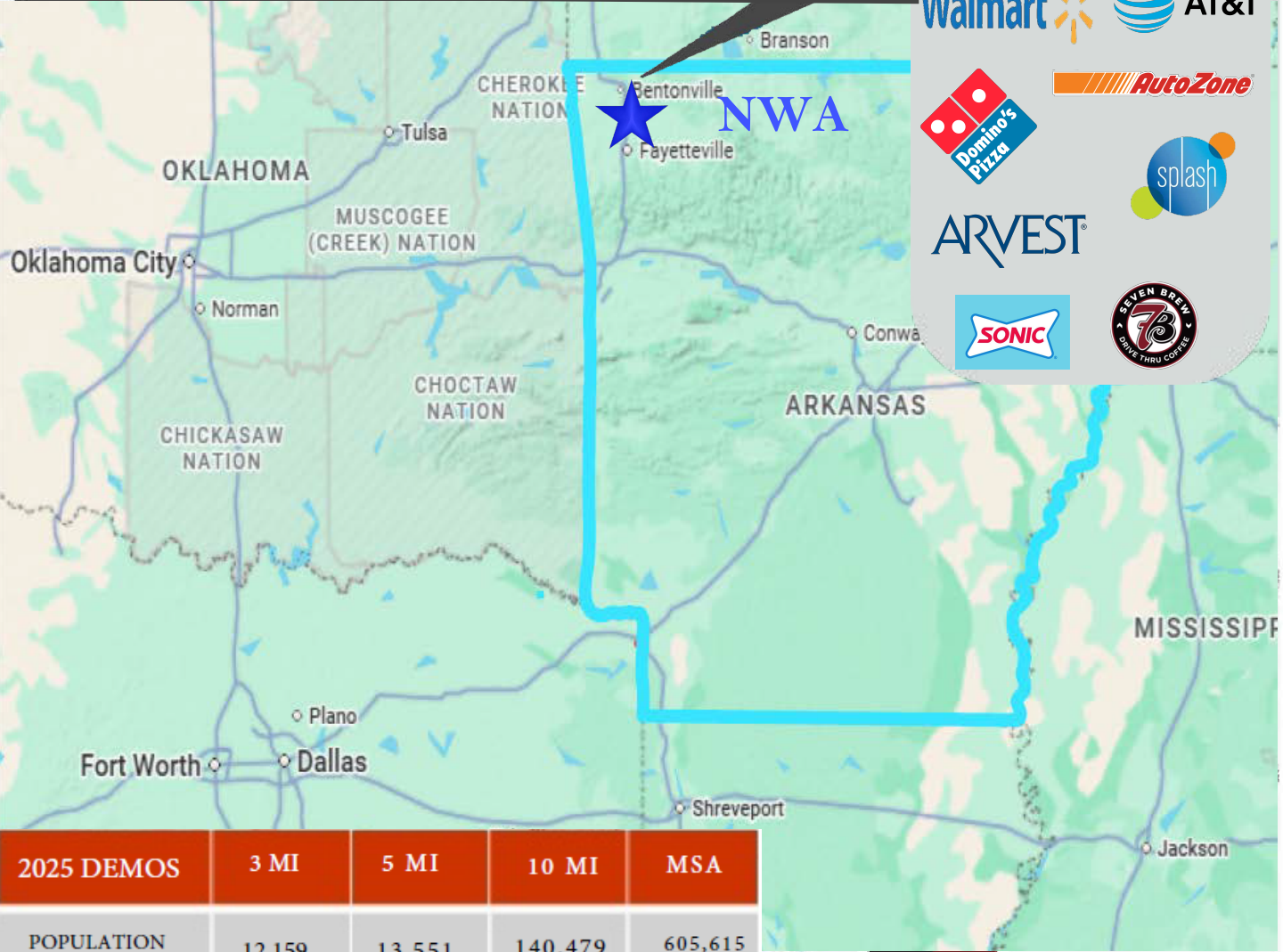
HWY 72 (Slack St.) & Weston St. Pea Ridge Arkansas

+ Highlights

- Pea Ridge has invested in planning and infrastructure resulting in an annual average population growth of 17% over the last 5 years. The highest growth area in NWA!
- Pea Ridge Commons is located in the heart of the commercial district on HWY 72 with walk ability to 150 new apartment units, recreational fields, schools, and shopping.

+ Come join this booming bedroom community of NW Arkansas!

Area Retailers:



2025 DEMOS	3 MI	5 MI	10 MI	MSA
POPULATION	12,159	13,551	140,479	605,615
AVE HH INCOME	\$118,649	\$145,600	\$122,155	\$97,000
HOUSEHOLDS	4,296	4,908	55,274	224,357



JOIN THE PEA RIDGE COMMONS TODAY!

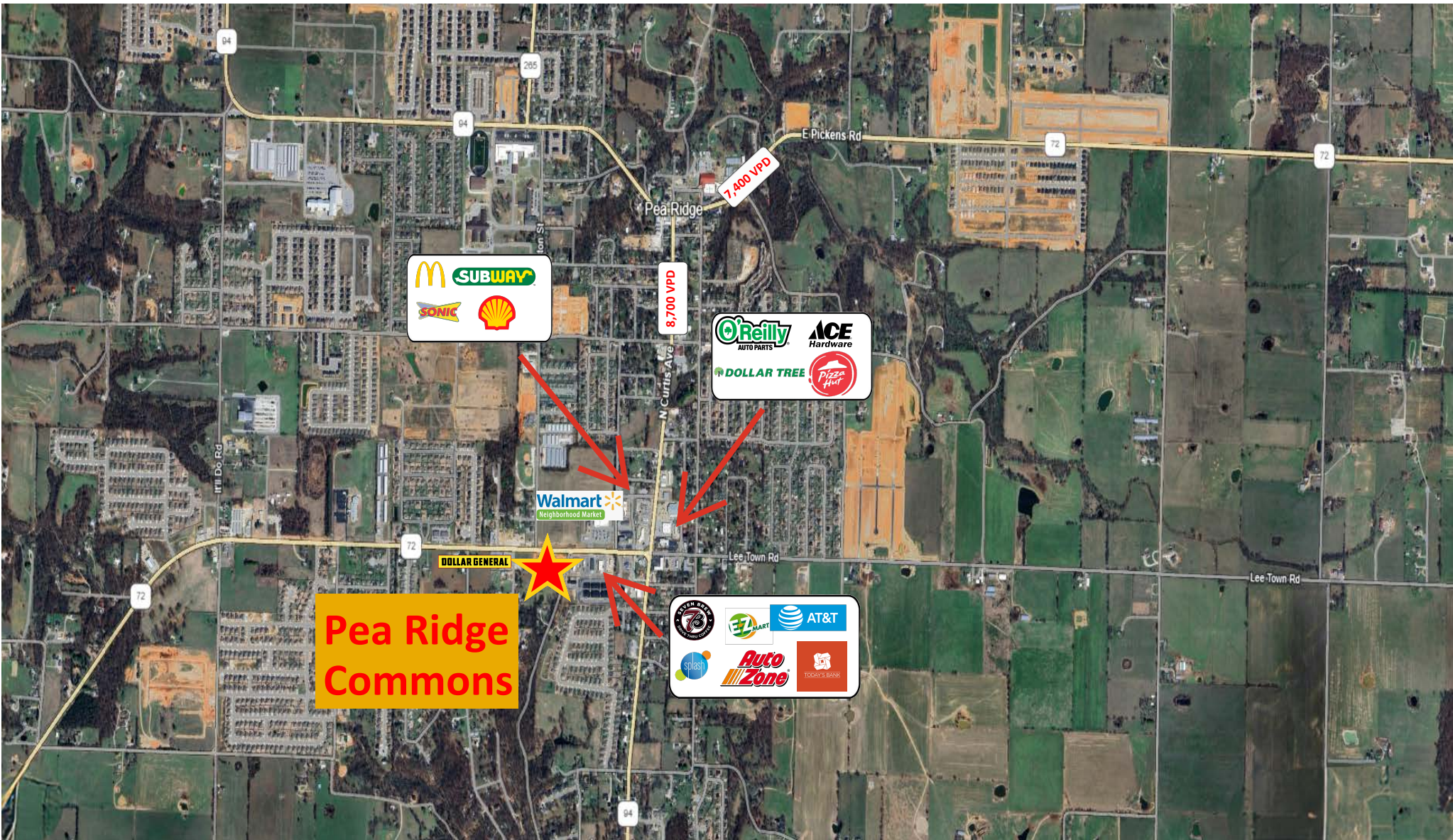
Pea Ridge to Downtown Bentonville – 10 Miles
Pea Ridge to Downtown Rogers – 9 Miles

**Pea Ridge
Commons**

Bentonville

Rogers

2025 DEMOS	3 MI	5 MI	10 MI	MSA
POPULATION	12,159	13,551	140,479	605,615
AVE HH INCOME	\$118,649	\$145,600	\$122,155	\$97,000
HOUSEHOLDS	4,296	4,908	55,274	224,357



8,700 VPD



7,400 VPD



DOLLAR GENERAL

Pea Ridge Commons





Weston Street

Slack Street – Hwy. 72

11,000 VPD

SOLD



Ozark Eye



Future
Build-to-Suit
Available



Weston Street

Ryan Road

1,200 to 7,225 sf

BUILDING 1
6,000 SQ. FT.

Under Construction

Detention
Pond

PROJECT INFORMATION

TOTAL BUILDING SIZE:
PROVIDED PARKING:

6,900± SQ.
STANDARD
ADA PARK
TOTAL PA