

Cassell Street

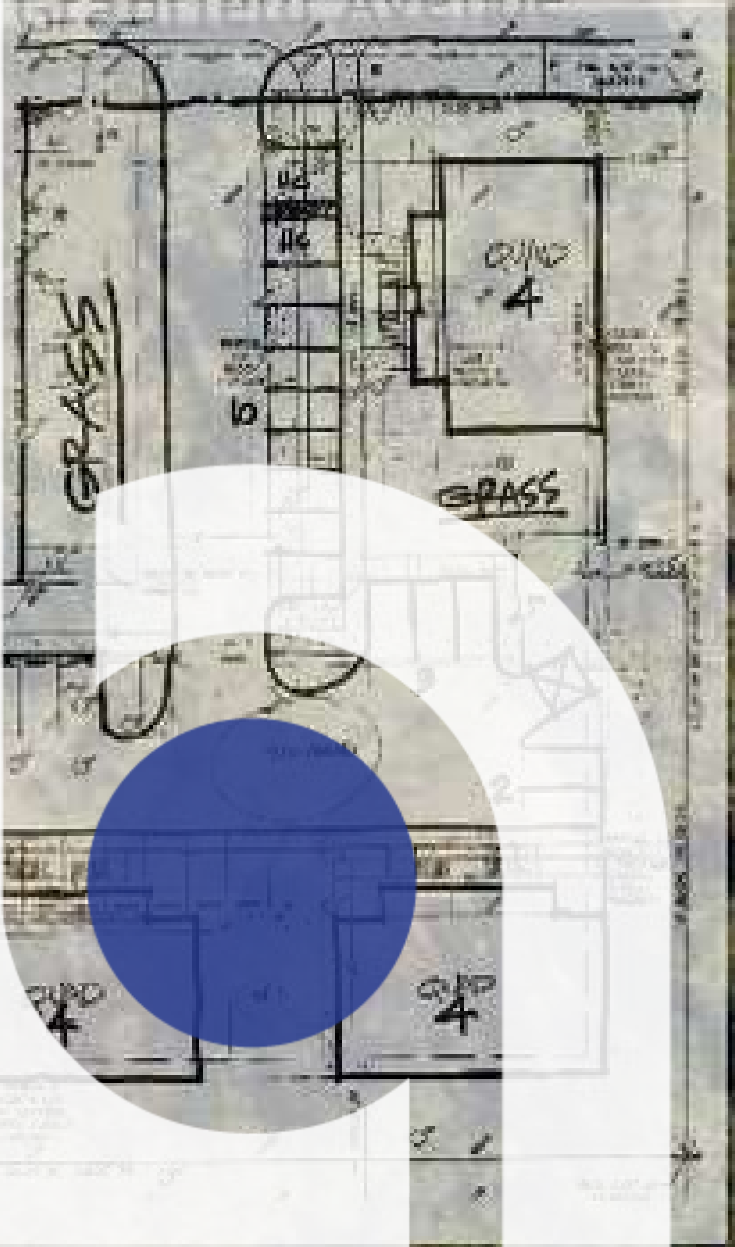
# Eastwood Village

2901 & 2001 W GRANFIELD AVE  
PLANT CITY, FL 33563

*Presented By:*

Nick Ganey, CCIM  
813.967.6077  
nick@bounat.com

Tommy Szarvas  
813.495.3143  
tommy@bounat.com



**bounat**

Boutique Firm | National Reach



## Table Of Contents

All materials and information received or derived from Boutique National, LLC its directors, officers, agents, advisors, affiliates and/or any third party sources are provided without representation or warranty as to completeness, veracity, or accuracy, condition of the property, compliance or lack of compliance with applicable governmental requirements, developability or suitability, financial performance of the property, projected financial performance of the property for any party's intended use or any and all other matters.

Neither Boutique National, LLC its directors, officers, agents, advisors, or affiliates makes any representation or warranty, express or implied, as to accuracy or completeness of the any materials or information provided, derived, or received. Materials and information from any source, whether written or verbal, that may be furnished for review are not a substitute for a party's active conduct of its own due diligence to determine these and other matters of significance to such party. Boutique National, LLC will not investigate or verify any such matters or conduct due diligence for a party unless otherwise agreed in writing.

EACH PARTY SHALL CONDUCT ITS OWN INDEPENDENT INVESTIGATION AND DUE DILIGENCE.

Any party contemplating or under contract or in escrow for a transaction is urged to verify all information and to conduct their own inspections and investigations including through appropriate third party independent professionals selected by such party. All financial data should be verified by the party including by obtaining and reading applicable documents and reports and consulting appropriate independent professionals. Boutique National, LLC makes no warranties and/or representations regarding the veracity, completeness, or relevance of any financial data or assumptions. Boutique National, LLC does not serve as a financial advisor to any party regarding any proposed transaction. All data and assumptions regarding financial performance, including that used for financial modeling purposes, may differ from actual data or performance. Any estimates of market rents and/or projected rents that may be provided to a party do not necessarily mean that rents can be established at or increased to that level. Parties must evaluate any applicable contractual and governmental limitations as well as market conditions, vacancy factors and other issues in order to determine rents from or for the property.

Legal questions should be discussed by the party with an attorney. Tax questions should be discussed by the party with a certified public accountant or tax attorney. Title questions should be discussed by the party with a title officer or attorney. Questions regarding the condition of the property and whether the property complies with applicable governmental requirements should be discussed by the party with appropriate engineers, architects, contractors, other consultants and governmental agencies. All properties and services are marketed by Boutique National, LLC in compliance with all applicable fair housing and equal opportunity laws.



# Executive Summary



## OFFERING SUMMARY

Sale Price:	\$799,000
Lot Size:	1.5 Acres
Zoning:	R-2 Multi-Family Dwelling (Plant City)

## PROPERTY OVERVIEW

Great opportunity to acquire 1.5 acres in Plant City, FL. The site is zoned R-2 allowing 16 multi-family units. Located just south of the Florida Strawberry Festival grounds, I-4, and many national retailers.

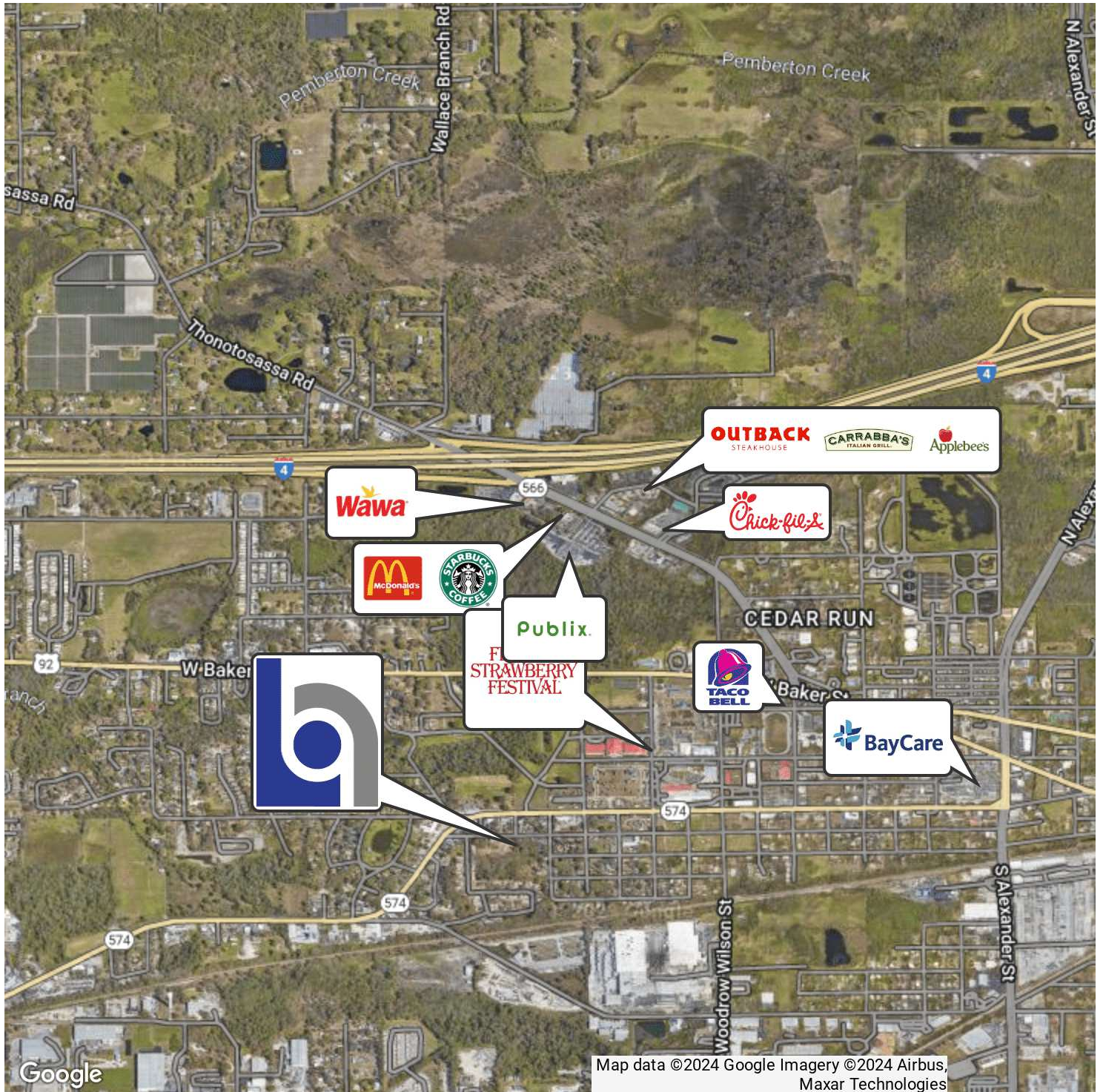
## PROPERTY HIGHLIGHTS

- Prime location
- Utilities in front of site
- Concept plans showing 4 quads with 16 units





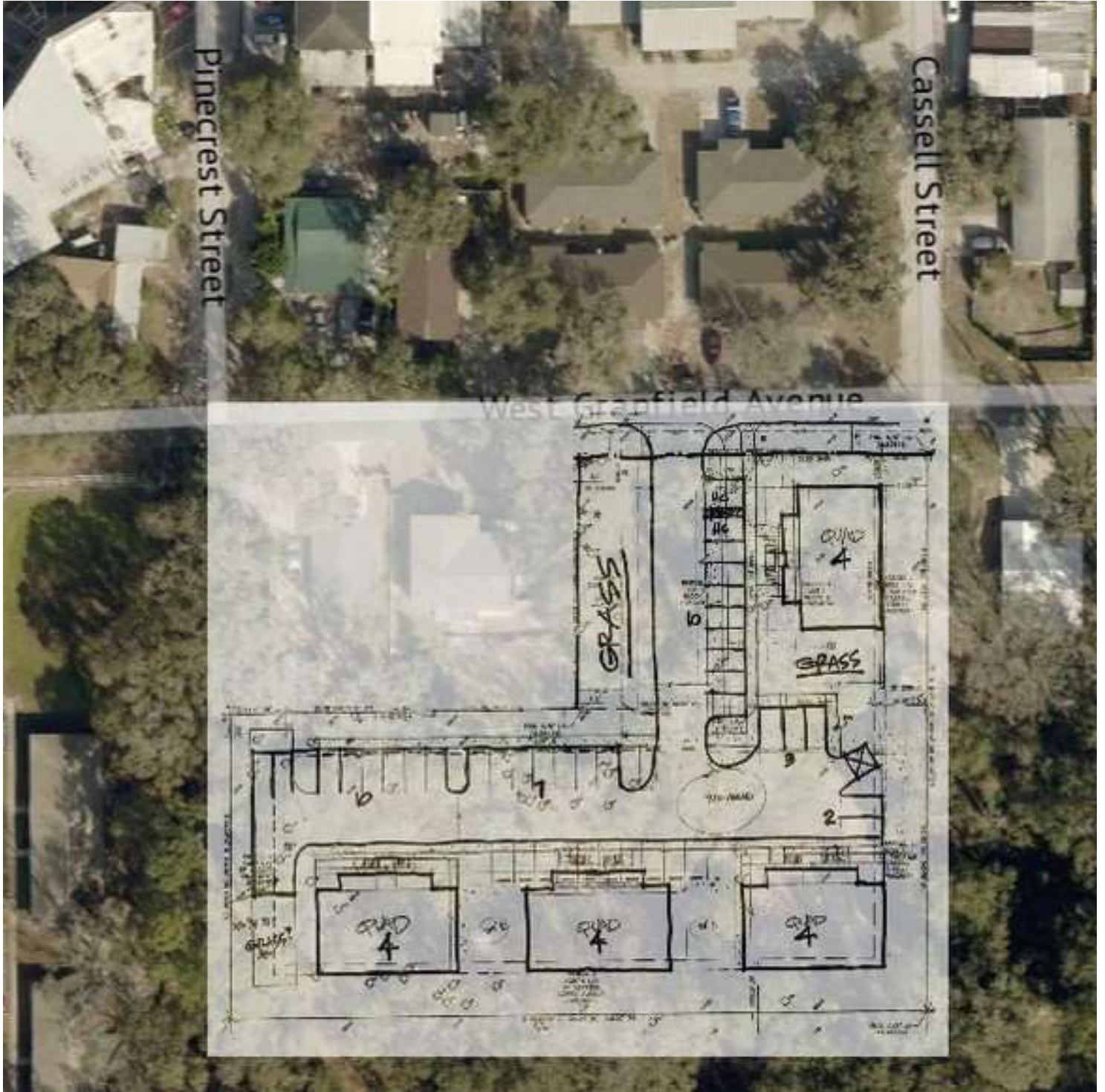
# Aerial Map







# Site Plan 1





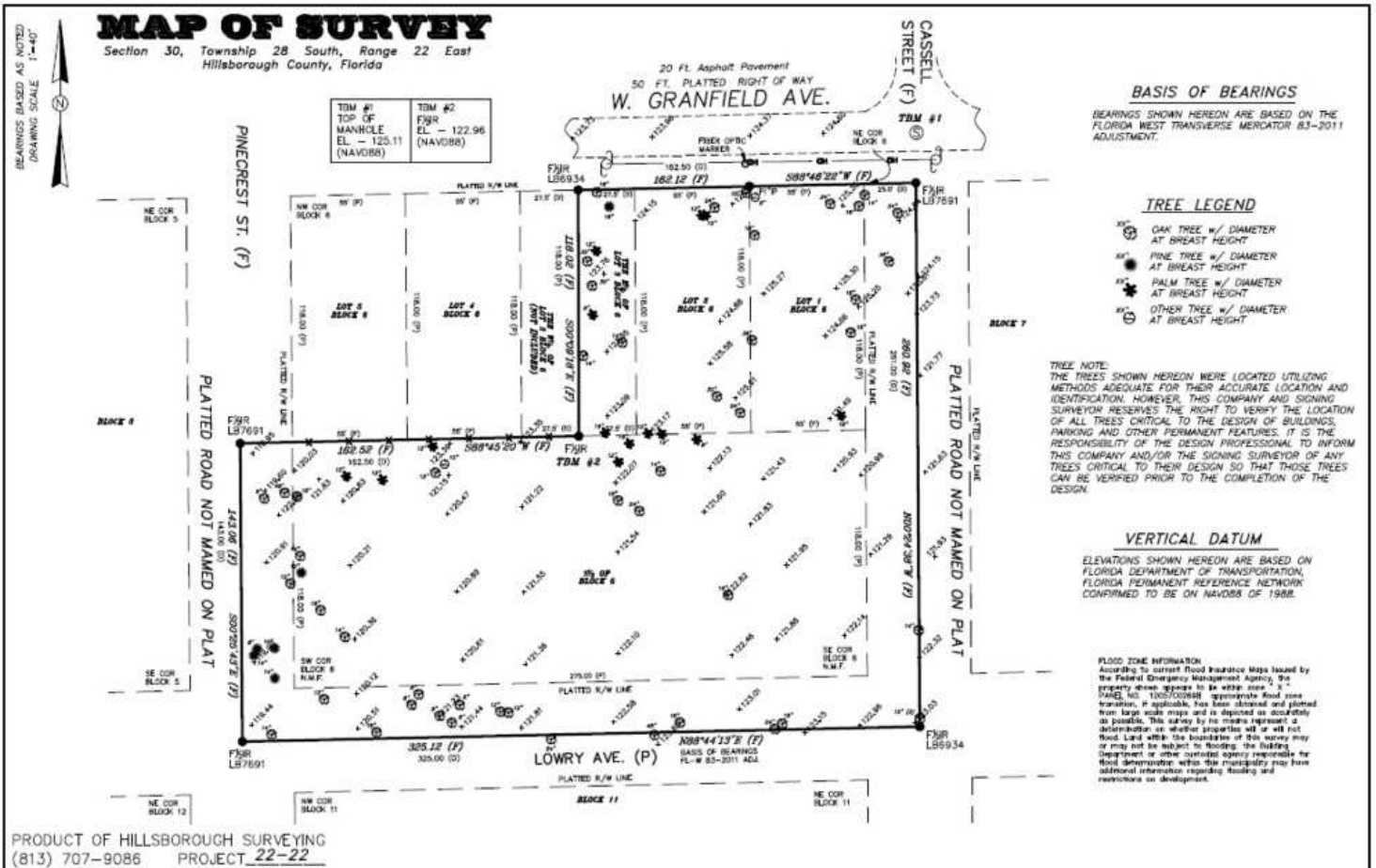
# Site Plan 2





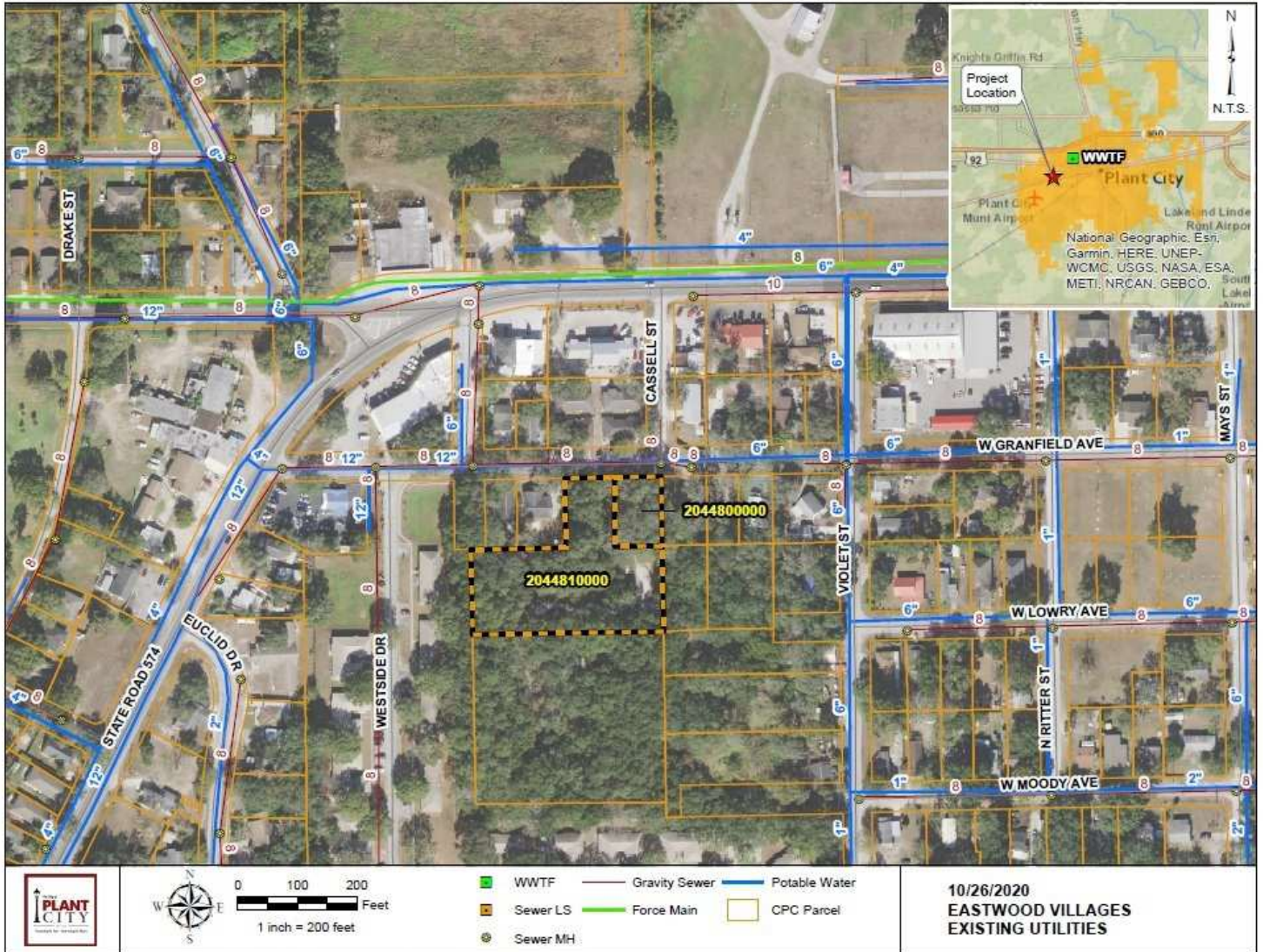


# Survey





# Utilities Map

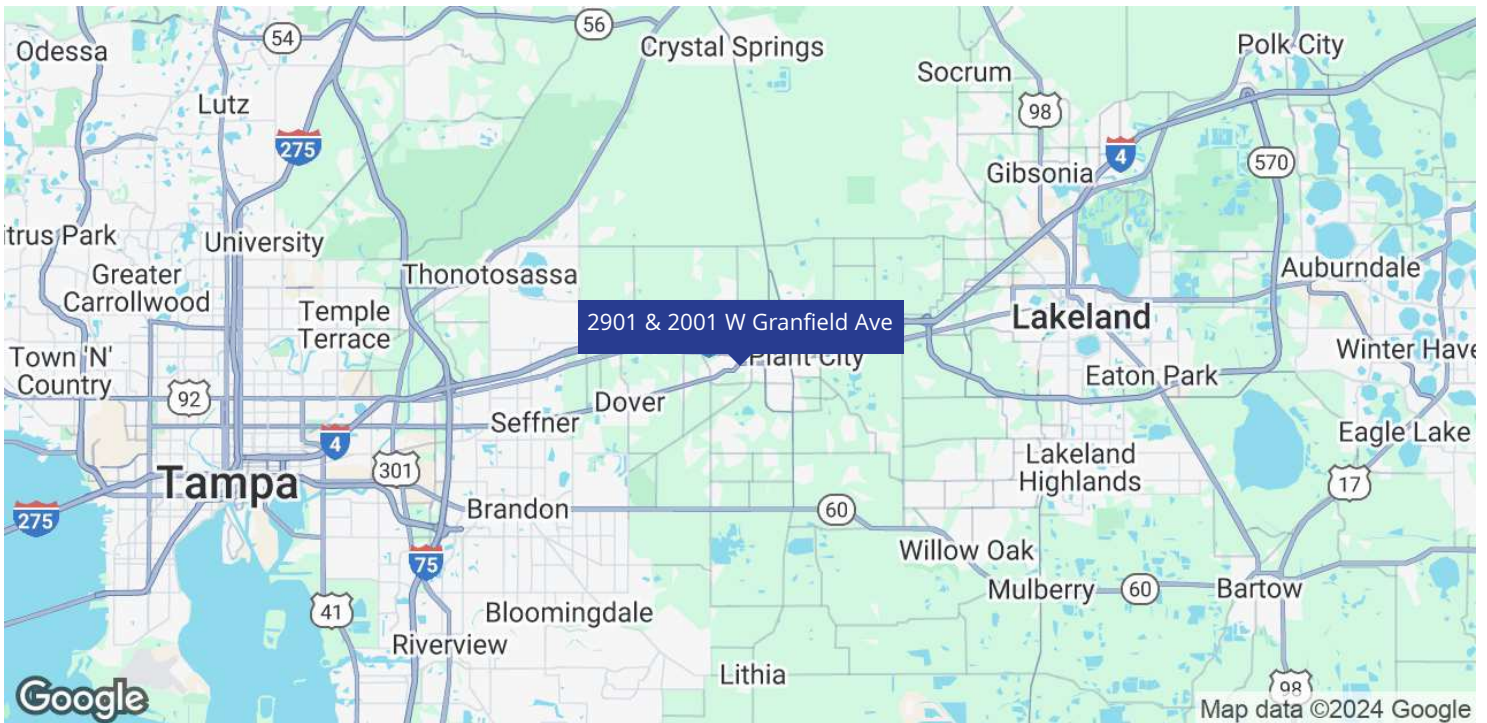
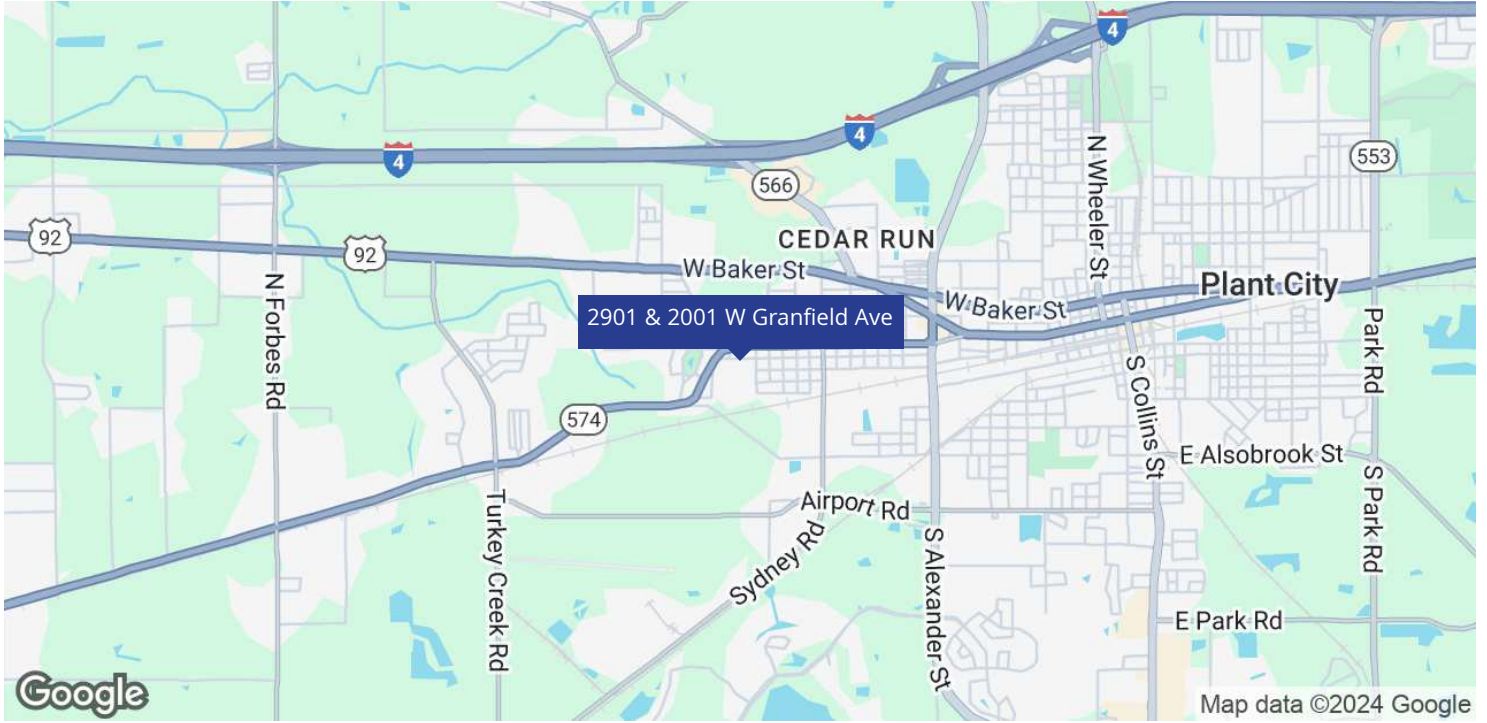


C:\Dropbox (Hydro Solutions)\PlantCity\_HSC\GIS Layer CPC\MXD\SiteReview\_20201026\_Eastwood\_Villages.mxd



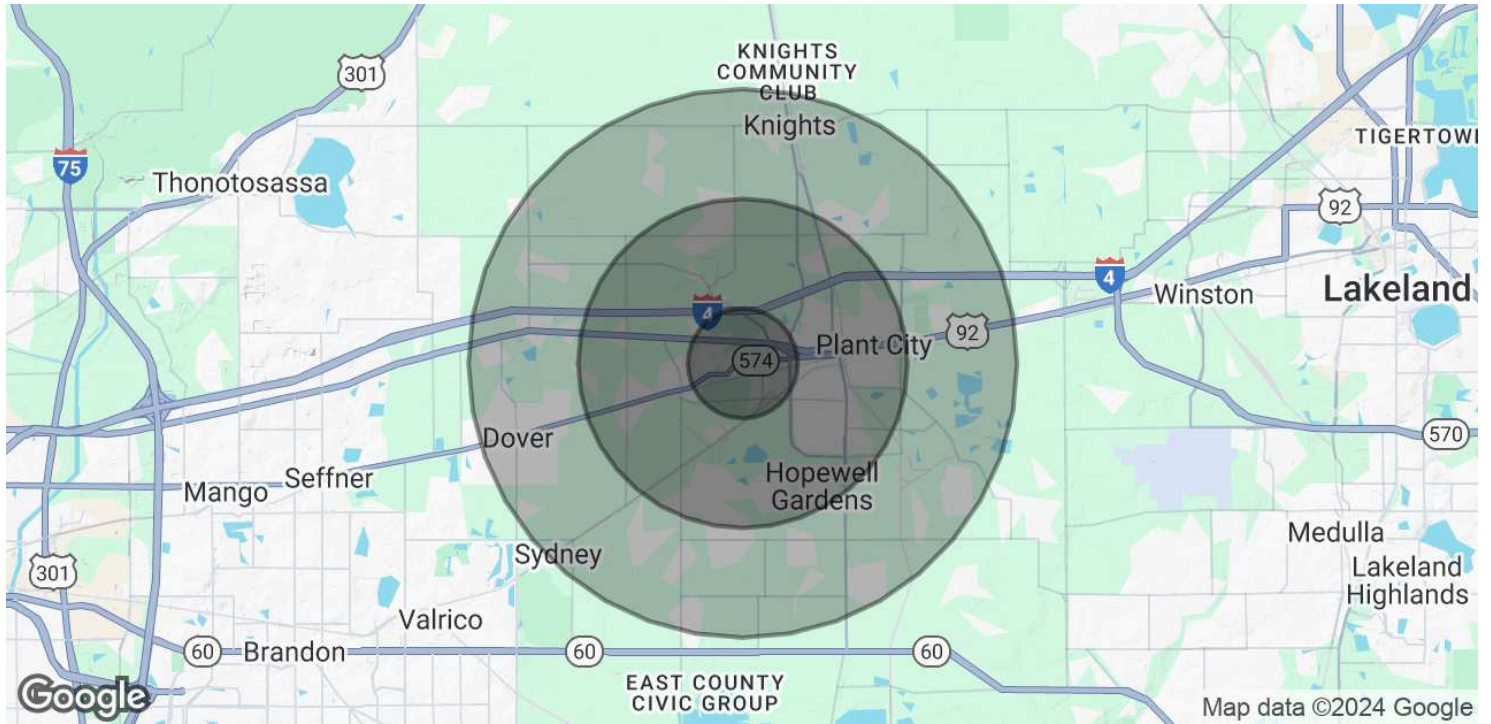


# Location Map





# Demographics Map & Report



<b>POPULATION</b>	<b>1 MILE</b>	<b>3 MILES</b>	<b>5 MILES</b>
Total Population	6,993	39,410	66,651
Average Age	30.3	33.6	34.9
Average Age (Male)	30.1	33.3	34.3
Average Age (Female)	30.6	34.3	35.9
<b>HOUSEHOLDS &amp; INCOME</b>	<b>1 MILE</b>	<b>3 MILES</b>	<b>5 MILES</b>
Total Households	2,145	13,498	22,870
# of Persons per HH	3.3	2.9	2.9
Average HH Income	\$45,967	\$59,987	\$60,802
Average House Value		\$280,229	\$193,333