

Estate Lots/Acreage For Sale

105 Woodland Meadows / 99999 Woodland Meadows

Total of 51.65 ac (Tract 5A 27.84/ac & Tract 5B 23.81/ac)



Oh My...
The Views

**DEVELOPMENT
OPPORTUNITY
\$3,873,750.00**

105 Woodland Meadows / 99999 Woodland Meadows

- Access to Sweeten Creek Road with a shared traffic light
- Property located behind new Ellison at The Preserve Apartments on Sweeten Creek Rd
- Access to public water and sewer on the street
- Approved for 11 Single Family Homes by the Buncombe County Board of Adjustments. PUD was approved.
- Paved Road, Curb, Streetlights and Gutters in place
- Long Range Mountain Views
- 2 PINs, Tract A and Tract B on both sides of Woodland Meadows Dr
- Combined 51.65 acres for \$3,873,750
- Tracts can be sold separately. Contact Broker for more information.

[360 Degree Panoramic View of Location](#)

Pulliam Properties Inc.
James Wilson, Broker
1970 Hendersonville Rd

www.pulliamproperties.com
jwilson@pulliamproperties.com
Asheville, NC 28803

office: (828) 684-4344
mobile: (828) 768-7098

Estate Lots/Acreage For Sale

105 Woodland Meadows / 99999 Woodland Meadows

Total of 51.65 ac (Tract 5A 27.84/ac & Tract 5B 23.81/ac)



VIDEO LINK TO YOUTUBE



Pulliam Properties Inc.
James Wilson, Broker
170 Hendersonville Rd

www.pulliamproperties.com
jwilson@pulliamproperties.com
Asheville, NC 28803

office: (828) 684-4344
mobile: (828) 768-7098

ALL INFORMATION FURNISHED REGARDING PROPERTY FOR SALE OR LEASE IS FROM SOURCES DEEMED RELIABLE, BUT NO WARRANTY OR REPRESENTATION IS MADE AS TO THE ACCURACY THEREOF AND THE SAME IS SUBMITTED SUBJECT TO ERRORS, OMISSIONS, PRIOR SALE OR LEASE, CHANGE OR WITHDRAWAL WITHOUT NOTICE. NO LIABILITY OF ANY KIND IS TO BE IMPOSED ON THE BROKER HEREIN.

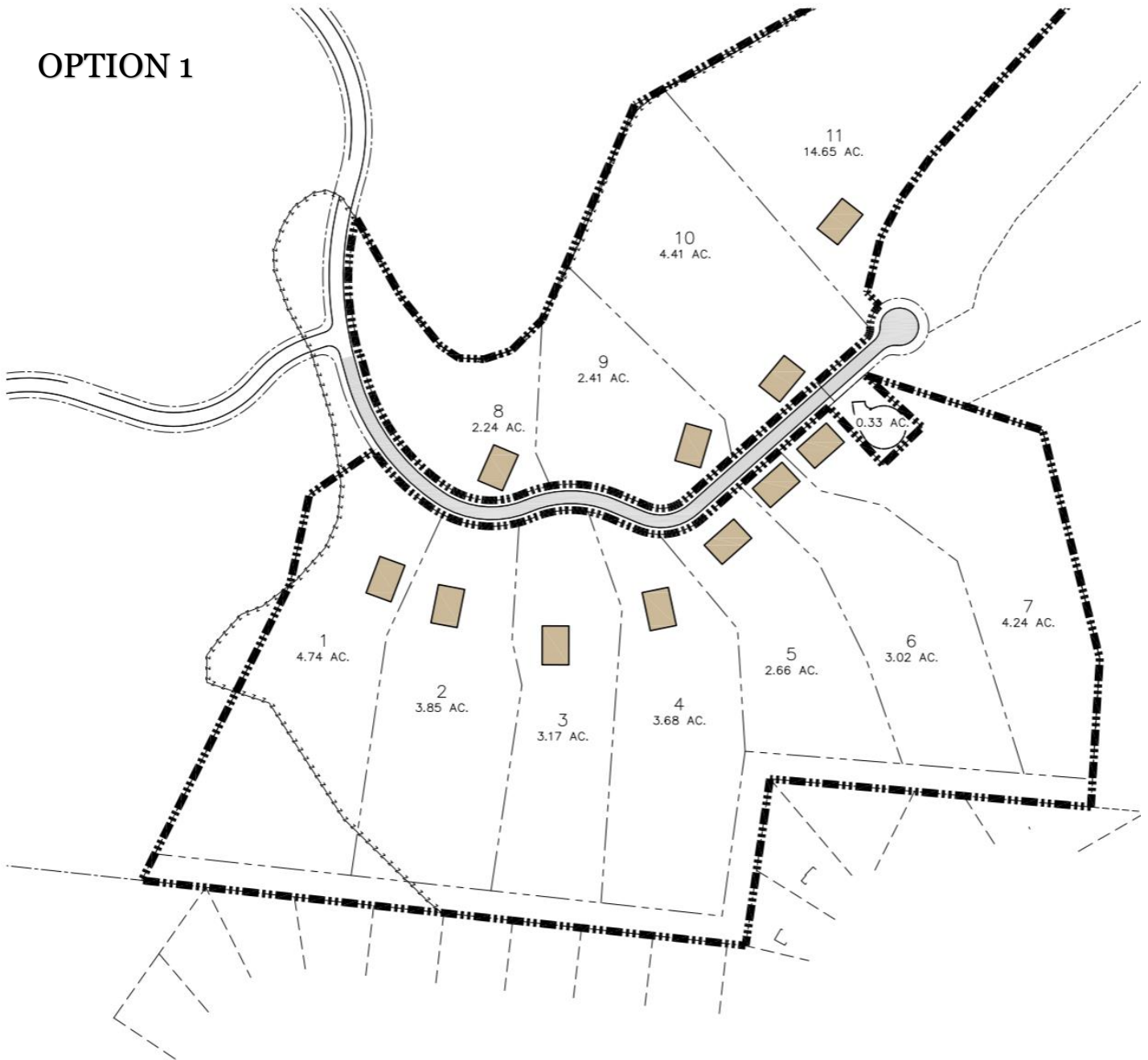
Estate Lots/Acreage For Sale

105 Woodland Meadows / 99999 Woodland Meadows

Total of 51.65 ac (Tract 5A 27.84/ac & Tract 5B 23.81/ac)



OPTION 1



Pulliam Properties Inc.

James Wilson, Broker

1970 Hendersonville Rd

www.pulliamproperties.com

jwilson@pulliamproperties.com

Asheville, NC 28803

office: (828) 684-4344

mobile: (828) 768-7098

360-266-1234 for a view of location

ALL INFORMATION FURNISHED REGARDING PROPERTY FOR SALE OR LEASE IS FROM SOURCES DEEMED RELIABLE, BUT NO WARRANTY OR REPRESENTATION IS MADE AS TO THE ACCURACY THEREOF AND THE SAME IS SUBMITTED SUBJECT TO ERRORS, OMISSIONS, PRIOR SALE OR LEASE, CHANGE OR WITHDRAWAL WITHOUT NOTICE. NO LIABILITY OF ANY KIND IS TO BE IMPOSED ON THE BROKER HEREIN.

Estate Lots/Acreage For Sale

105 Woodland Meadows / 99999 Woodland Meadows

Total of 51.65 ac (Tract 5A 27.84/ac & Tract 5B 23.81/ac)



OPTION 2



Pulliam Properties Inc.
James Wilson, Broker
1970 Hendersonville Rd

www.pulliamproperties.com
jwilson@pulliamproperties.com
Asheville, NC 28803

office: (828) 684-4344
mobile: (828) 768-7098

ALL INFORMATION FURNISHED REGARDING PROPERTY FOR SALE OR LEASE IS FROM SOURCES DEEMED RELIABLE, BUT NO WARRANTY OR REPRESENTATION IS MADE AS TO THE ACCURACY THEREOF AND THE SAME IS SUBMITTED SUBJECT TO ERRORS, OMISSIONS, PRIOR SALE OR LEASE, CHANGE OR WITHDRAWAL WITHOUT NOTICE. NO LIABILITY OF ANY KIND IS TO BE IMPOSED ON THE BROKER HEREIN.

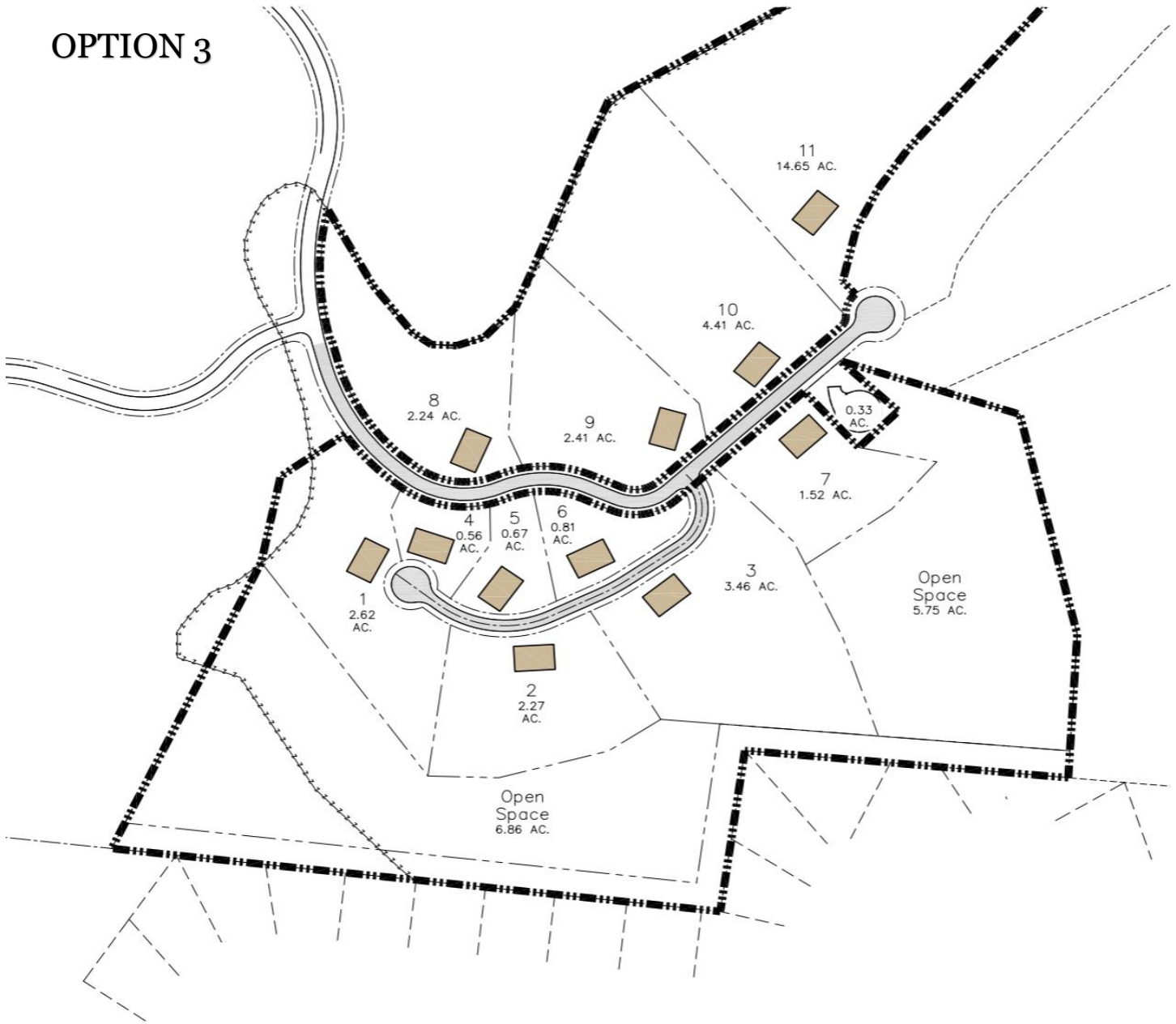
Estate Lots/Acreage For Sale

105 Woodland Meadows / 99999 Woodland Meadows

Total of 51.65 ac (Tract 5A 27.84/ac & Tract 5B 23.81/ac)



OPTION 3



Pulliam Properties Inc.
James Wilson, Broker
1970 Hendersonville Rd

www.pulliamproperties.com
jwilson@pulliamproperties.com
Asheville, NC 28803

office: (828) 684-4344
mobile: (828) 768-7098

ALL INFORMATION FURNISHED REGARDING PROPERTY FOR SALE OR LEASE IS FROM SOURCES DEEMED RELIABLE, BUT NO WARRANTY OR REPRESENTATION IS MADE AS TO THE ACCURACY THEREOF AND THE SAME IS SUBMITTED SUBJECT TO ERRORS, OMISSIONS, PRIOR SALE OR LEASE, CHANGE OR WITHDRAWAL WITHOUT NOTICE. NO LIABILITY OF ANY KIND IS TO BE IMPOSED ON THE BROKER HEREIN.