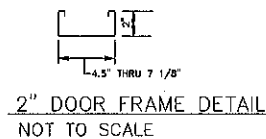
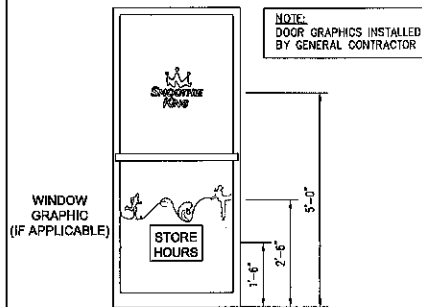


EASY SWING DOOR W/ 2" FRAME
NOT TO SCALE

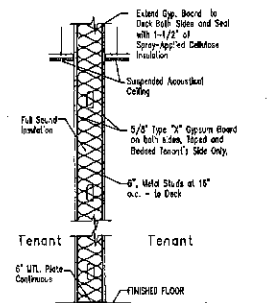
2 EASY SWING DOOR
A-2 NOT TO SCALE



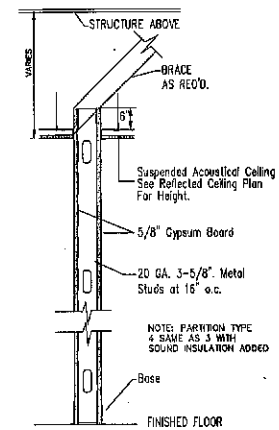
2" DOOR FRAME DETAIL
NOT TO SCALE



3 FRONT DOOR GRAPHICS
A-2 NOT TO SCALE



4 ONE HOUR FIRE RATED WALL, UL DESIGN #U425 WALL TYPE 2a & 2b
A-2 NOT TO SCALE



5 INT. WALL SECTION WALL TYPE 3 & 4
A-2 NOT TO SCALE

CONSTRUCTION NOTES:

- DIMENSIONS ON FLOOR PLANS ARE FINISH WALL SURFACE TO FINISH WALL SURFACE.
- VERTICAL DIMENSIONS AND NUMERICAL ELEVATIONS ARE TO THE FINISH SURFACE.
- METAL STUD PARTITIONS SHALL HAVE REINFORCEMENT FOR ATTACHMENT OF WALL MOUNTED ITEMS AS REQUIRED, AND SHALL BE BRACED TO STRUCTURE ABOVE FOR HEAVY ITEMS AS REQUIRED FOR SUPPORT. IF WATER HEATER IS SCHEDULED TO BE INSTALLED OFF THE FLOOR, WALLS TO HAVE 16 GA. 12" STUD ON CENTER TO ACCOMMODATE THE WATER HEATER. PROVIDE 5/8" TYPE "X" GREEN BOARD AT NET LOCATIONS.
- DIMENSIONS MARKED "CLEAR" INDICATE A MINIMUM CLEARANCE THAT MUST BE MAINTAINED. ANY DISCREPANCIES MUST BE REPORTED TO SMOOTHIE KING BEFORE CONSTRUCTION BEGINS.
- CONTRACTOR TO PROVIDE DOORS, FRAMES, STOPS, MUTES, AND BUTTS THROUGHOUT FOR A COMPLETE INSTALLATION.
- INFORMATION CONTAINED IN THESE DOCUMENTS IS BASED ON EXISTING DOCUMENTS AND LISTED FIELD MEASUREMENTS AND THERE MAY BE REQUIRED ADJUSTMENTS AND/OR MODIFICATIONS TO CONFORM TO EXISTING CONDITIONS. SMOOTHIE KING SHALL APPROVE ADJUSTMENTS IN ACCORDANCE WITH DESIGN INTENT. IN NO CASE SHALL SAID ADJUSTMENTS REDUCE THE QUALITY OF CONSTRUCTIONS OR REDUCE THE PROJECTS CONFORMANCE TO STATE AND LOCAL CODES AND ORDINANCES.
- IF EXISTING FIREPROOFING OR FIRE ASSEMBLIES ARE DAMAGED DURING CONSTRUCTIONS, THEY SHALL BE RESTORED TO CONFORM TO ORIGINAL FIRE PROTECTION REQUIREMENTS.
- VERIFY THAT CONSTRUCTION OF EXISTING WALLS, FLOORS AND OPENINGS WITHIN THE PROJECT SCOPE MEET THE FIRE PROTECTION RATING DESIGNATED ON THESE DRAWINGS. MAKE ANY REPAIRS OR MODIFICATIONS NECESSARY TO BRING SAID WALLS, FLOORS, DOORS, DUCT PENETRATIONS, ETC. UP TO DESIGNATED RATING.
- DO NOT SCALE DRAWINGS, IF DRAWINGS ARE IN QUESTION, OBTAIN CLARIFICATION FROM SMOOTHIE KING (985)635-6973, DESIGN DEPT., PRIOR TO CONTINUING CONSTRUCTION.
- WORK SHALL COMPLY WITH THE A.D.A. REQUIREMENTS. CONSULT ARCHITECT IF MOUNTING HEIGHTS AND CLEARANCES ARE IN DOUBT.
- CONTRACTOR TO REMOVE OLD FLOORING, IF APPLICABLE, FLASH PATCH AREAS WHERE FLOOR IS NOT LEVEL OR TRUE.
- ALL TELEPHONE AND COMMUNICATIONS WIRING MUST BE AIR PLUMB APPROVED OR IN CONDUIT. IF AUTOMATIC SPRINKLER SYSTEM IS EXISTING, MODIFICATIONS AND DOCUMENTATION FOR OBTAINING PERMITS IS RESPONSIBILITY OF THE CONTRACTOR. ADJUST LOCATION OF SPRINKLER HEADS AND DROPS TO ACCOMMODATE PARTITIONS AND CEILING SYSTEM, AS REQUIRED BY CODE. PROVIDE "ARM OVERS" FROM THE EXISTING BRANCH OUTLETS TO THE NEW SPRINKLER HEADS. ALL SPRINKLER WORK SHALL COMPLY WITH NFPA.
- CONTRACTOR TO REPLACE ALL MISSING ESCUTCHEON PLATES. NEW PLATES TO MATCH EXISTING.
- IF HVAC IS EXISTING, RELOCATE DUCTWORK TO CONFORM TO REVISED WALL LOCATIONS, FURNISH AND INSTALL NEW DIFFUSERS AND RETURN GRILLES, AS REQUIRED. CONTRACTOR TO RE-BALANCE HVAC SYSTEM.
- MISCELLANEOUS HVAC AND PLUMBING WORK NOT SPECIFICALLY NOTED ON THE DRAWINGS SHALL COMPLY WITH THE APPLICABLE FEDERAL, STATE AND LOCAL CODES.
- IF APPLICABLE, CONTRACTOR TO CLEAN AND REPAIR ALL EXISTING PLUMBING FIXTURES AND TOILET ACCESSORIES TO A NEW APPEARANCE AND GOOD WORKING CONDITION. REPLACE PLUMBING FIXTURES AND/OR TOILET ACCESSORIES NOT MEETING CURRENT A.D.A. OR LOCAL CODE REQUIREMENTS WITH FIXTURES SCHEDULED ON THIS SHEET.
- ALL 5/8" G.M.B. (MOISTURE RESISTANT IN RESTROOMS) IN THE LEASED PREMISES SHALL BE FURNISHED, INSTALLED, TAPED AND SPACKLED BY G.C.

PARTITION LEGEND

| MARK | DESCRIPTION |
|------|---|
| ◊ | EXISTING EXTERIOR WALL (G.C. RESPONSIBLE FOR INSULATION AND SHEETROCK 5" ABOVE CEILING IN ANY GIVEN ROOM) |
| ◊ | NEW 1-HR PARTITION TO BE CONSTRUCTED TO UNDERSIDE OF EXISTING ROOF DECK. UL #425. SEE DETAIL 4/A-2. |
| ◊ | 1-HR PARTITION EXISTING SEE DETAIL 4/A-2. |
| ◊ | NEW STANDARD INTERIOR WALL TO 6" ABOVE LAY IN CEILING WITHOUT INSULATION. BRACE TO STRUCTURE ABOVE. REF DETAIL 5/A-2. |
| ◊ | NEW STANDARD INTERIOR WALL TO 6" ABOVE LAY IN CEILING WITH INSULATION. BRACE TO STRUCTURE ABOVE. |
| ◊ | FINISHED FURRED OUT 1/2" WALL. TOP OF 1/2" WALL TO EXTEND TO 4'-0" AFF. REF DET. 5/A-2. |
| ◊ | NEW STANDARD INTERIOR WALL TO EXTEND TO HOT WATER HEATER SHELF. REF DETAIL 11/A-B. |
| ◊ | EXISTING INTERIOR WALL TO REMAIN AND BE REPAIRED AS NECESSARY TO RECEIVE NEW FINISHES. |

*** WHERE PLUMBING IS SHOWN, CONTRACTOR TO ALLOW FOR SPECIAL WALL THICKNESS REQUIRED FOR SAME

PARTITION SYMBOL

| MARK | DESCRIPTION |
|------|-------------------------|
| ▨ | NEW WALL |
| ▩ | EXISTING WALL TO REMAIN |
| ▧ | DEMO WALL |

DOOR SCHEDULE

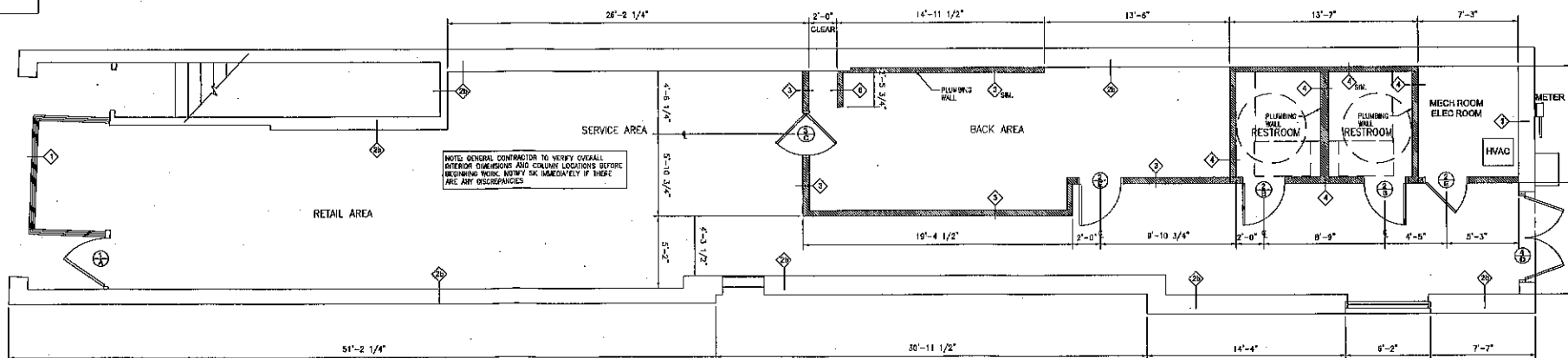
| MARK | PROVIDED BY | INSTALL BY | DOOR | MATERIAL | FRAME | THRESHOLD | REMARKS |
|------|-------------|------------|---|----------------------------------|--------------------------------|-----------|---|
| 1 | G.C. | G.C. | EXISTING SINGLE STORE FRONT | TEMPERED GLASS, STORE FRONT | ALUM. | ALUM. | LOCATE NEW DOOR AS SHOWN ON PLAN. SEE DETAIL 3/A-2 FOR DOOR GRAPHICS |
| 2 | G.C. | G.C. | NEW 3'-0" X 7'-0" VENEER DOOR | SOLID CORE FLUSH OAK VENEER DOOR | HOLLOW METAL TO BE PAINTED P-3 | | USED AT RESTROOM AND OFFICE |
| 3 | G.C. | G.C. | NEW-EASY SWING STD. 3' X 7'- CONFORM. WALL CONSTRUCTION W/ G.C. | S20000 MODEL ALUM. | HOLLOW METAL TO BE PAINTED P-3 | | THE CHASE DOOR COMES INSTALLED WITH 9" X 30" CLEAR ACRYLIC VISION PANEL, KICK AND PUSH PLATE BOTH SIDES AND HINGES EXTERNAL TO JAMB. THE CHASE DOOR FRAME COMES IN 3 PIECES HOLLOW METAL KNOCK DOWN STYLE- SEE DETAIL 2/A-2 THIS SHEET. CONTACT ANH 800-543-4455, EXT. 2925 |
| 4 | | | EXISTING OBL 3'-0" X 7'-0" | HOLLOW CORE METAL TO BE PAINTED | HOLLOW METAL TO BE PAINTED P-3 | ALUM. | REAR EXIT DOOR |
| 5 | | | EXISTING 3'-0" X 7'-0" | SOLID CORE FLUSH OAK VENEER DOOR | HOLLOW METAL TO BE PAINTED P-3 | | EXISTING DOOR TO REMAIN. |

HANDICAP ACCESSIBLE GUIDELINES 4.27.4 OPERATION CONTROLS AND OPERATING MECHANISMS SHALL BE OPERABLE WITH ONE HAND AND SHALL NOT REQUIRE TIGHT GRASPING, PINCHING, OR TWISTING OF THE WRIST. THE FORCE REQUIRED TO ACTIVATE CONTROLS SHALL BE NO GREATER THAN 5 LBF (22.2 N).

HARDWARE SCHEDULE

| MARK | PROVIDED BY | INSTALL BY | DESCRIPTION |
|------|-------------|------------|---|
| A | ZEC | G.C. | CLOSER, MORTISED CYLINDER WITH INTERCHANGEABLE CORE COORDINATE WITH LOCKSET MECHANISM. OPERATE FROM OUTSIDE BY KEY AND INSIDE BY LATCH. |
| B | G.C. | G.C. | 1-1/2 PAIR HINGES, MUTES, PRIVACY, CLOSER, AND FLOOR STOP. |
| C | G.C. | G.C. | 1-1/2 PAIR HINGES, PUSH AND KICK PLATES. HINGES: CHASE "DOUBLE ACTING" PLATES: PLEXIGLASS PUSH PLATE (ON BOTH SIDES) |
| D | G.C. | G.C. | 1-1/2 PAIR HINGES, MUTES, LOCKSET, CLOSER AND FLOOR STOP. REKEY AS REQUIRED BY TENANT. PROVIDE HARDWARE WITH PANIC DEVICE AND OUTSIDE LEVER WHERE REQUIRED-PROVIDE PEEP HOLE. |
| E | G.C. | G.C. | 1-1/2 PAIR HINGES, MUTES, LOCKSET, AND FLOOR STOP. |
| F | ZEC | G.C. | EXISTING HARDWARE TO REMAIN AS IS |

DOOR HARDWARE INFORMATION
FLOOR STOP 438260
EACH DOOR 3 HINGES 031950 4-1/2 X 4-1/2 NRP-US320
EACH DOOR 3 MUTES
EXTERIOR THRESHOLD, NATIONAL GUARD 894VV ALUMINUM OR EQUAL.
WEATHERSTRIPPING, NATIONAL GUARD 180 NCP
PRIVACY SET-SARGENT 7065/ LL LEVER / US250 OR EQUAL.
LOCKSET-SARGENT 7005/ LL LEVER / US250 OR EQUAL.
CLOSER AT EXTERIOR DOOR TO BE SARGENT 1400 SERIES 8243/LL LEVER US320 OR EQUAL.
CLOSER AT INTERIOR DOOR TO BE SARGENT 1431 OR EQUAL.



1 FLOOR PLAN
A-2 3/16" = 1'-0"

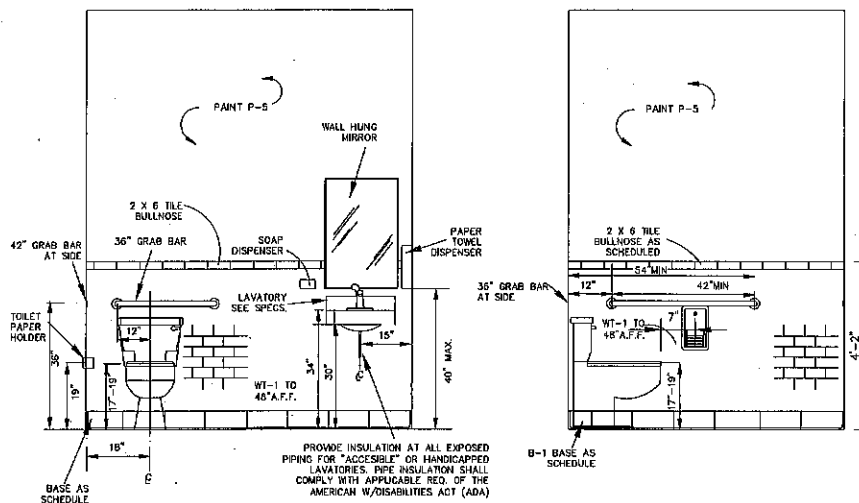
DESIGN DOCUMENTS
SMOOTHIE KING #1283
JEFFREY & PAULA CONWAY & DAVID HALPERN
351 KING ST. CHARLESTON, SC 29401

SMOOTHIE KING FRANCHISES, INC.
3900 N. CAUSEWAY BLVD.
SUITE 1300
METAIRIE, LA 70002
PH (985) 635-6973 FAX (985) 635-6987

Date: 10/20/2014
Drawn by: DKS
Chkd/Revised by: RRS

FLOOR PLAN
Sheet No.

A-2



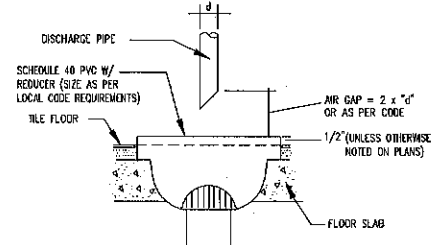
2 TYP. RESTROOM ELEVATION
A-3 NOT TO SCALE

3 TYP. RESTROOM SIDE ELEVATION
A-3 NOT TO SCALE

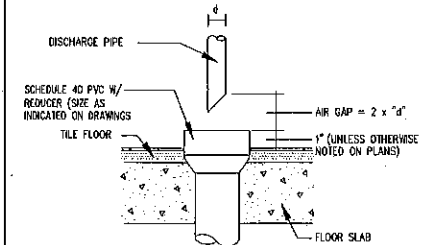
RESTROOM NOTES:
 THE RESTROOM LAYOUT IS BASED ON AND COMPLIES WITH THE "AMERICAN WITH DISABILITIES ACT" LATEST REGULATIONS. PLEASE NOTE THE FOLLOWING SECTIONS:
 4.16.5 FLUSH CONTROLS. FLUSH CONTROLS SHALL BE HAND OPERATED OR AUTOMATIC AND SHALL COMPLY WITH 4.27.4. CONTROLS FOR FLUSH VALVES SHALL BE MOUNTED ON THE WIDE SIDE OF TOILET AREAS NO MORE THAN 44" (1120mm) ABOVE THE FLOOR.
 4.19.4 EXPOSED PIPES AND SURFACES. HOT WATER AND DRAIN PIPES UNDER LAVATORIES SHALL BE INSULATED OR SHALL BE NO SHARP OR ABRASIVE SURFACES UNDER LAVATORIES.
 4.16.5 FAUCETS. FAUCETS SHALL COMPLY WITH 4.27.4. LEVER-OPERATED PUSH-TYPE, AND ONICALLY CONTROLLED MECHANISMS ARE EXAMPLES OF PLEASIBLE DESIGNS. SELF-CLOSING VALVES ARE ALLOWED IF THE FAUCET REMAINS OPEN FOR AT LEAST 10 SECONDS.
 4.26.2 GRAB BARS. OUTSIDE DIAMETER - MIN. 1 1/4", MAX 1 1/2". SPACE BETWEEN WALL AND GRAB BAR - 1 1/2".
 4.27.4 OPERATION. CONTROLS AND OPERATING MECHANISMS SHALL BE OPERABLE WITH ONE HAND AND SHALL NOT REQUIRE TIGHT GRASPING, PINCHING, OR TWISTING OF THE WRIST. THE FORCE REQUIRED TO ACTIVATE CONTROLS SHALL BE NO GREATER THAN 5 LBF (22.2 N).

| MARK | QTY | PROVIDED BY | INSTALL BY | DESCRIPTION | MANUFACTURER/ MODEL # |
|------|-----|-------------|------------|---------------------------------------|------------------------|
| 1 | 2 | G.C. | G.C. | 42" GRAB BAR | BOBRICK B-8808 SERIES |
| 2 | 2 | G.C. | G.C. | 36" GRAB BAR | BOBRICK B-6808 SERIES |
| 3 | 2 | G.C. | G.C. | SURFACE-MOUNTED MULTI-ROLL DISPENSER | BOBRICK B-2888 |
| 4 | 2 | G.C. | G.C. | FRAMED MIRROR | BOBRICK SIZE 18" X 36" |
| 5 | 4 | WASSERSTROM | G.C. | SURFACE-MOUNTED PAPER TOWEL DISPENSER | BOBRICK B-2922 |
| 6 | 4 | WASSERSTROM | G.C. | SURFACE-MOUNTED LIQUID SOAP DISPENSER | BOBRICK B-2111 |

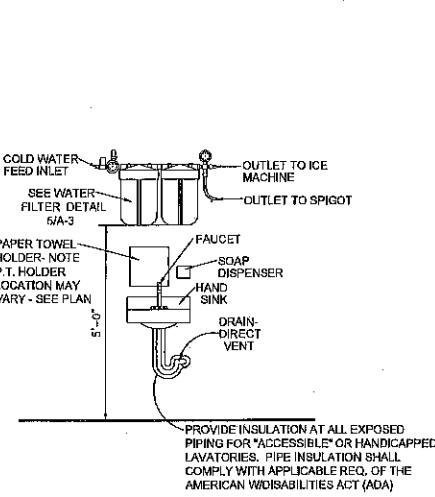
- NOTES:**
 1. MOUNTING HEIGHTS SHALL COMPLY WITH ADA GUIDELINES.
 2. INSTALL ACCORDING TO MANUFACTURER'S INSTRUCTIONS.
 3. PROVIDE BLOCKING IN WALLS TO RECEIVE FIXTURES AND ACCESSORIES
 4. PAPER TOWEL AND LIQUID SOAP DISPENSERS SHALL BE INSTALLED AT EVERY LAVATORY AND/OR HAND SINK



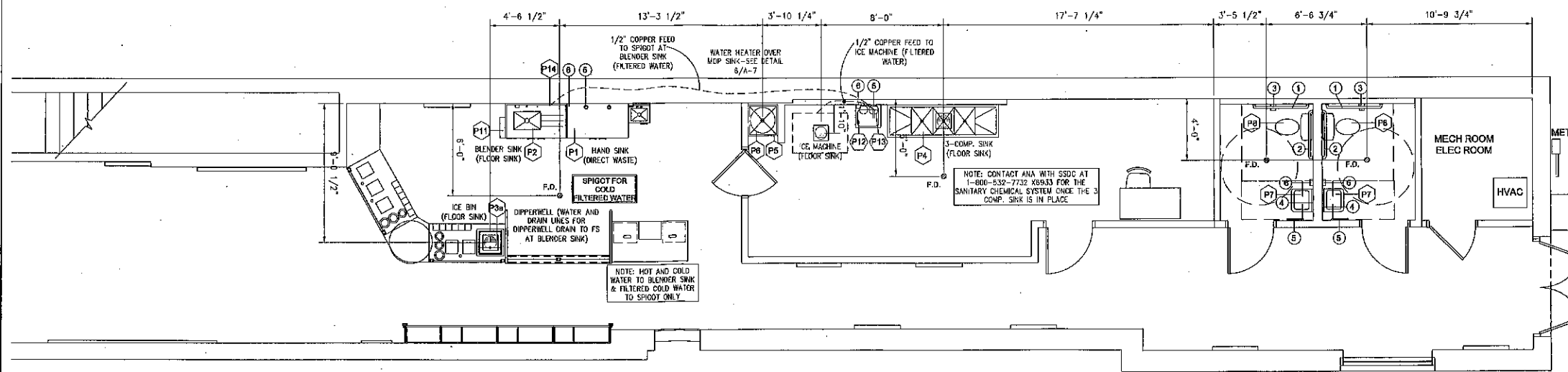
4 FLOOR SINK DETAIL W/ AIR GAP
A-3 NOT TO SCALE



4a HUB DRAIN DETAIL
A-3 NOT TO SCALE



6 TYP. DETAIL OF WATER FILTER ABOVE HAND SINK IN BACK AREA
A-3 N.T.S.



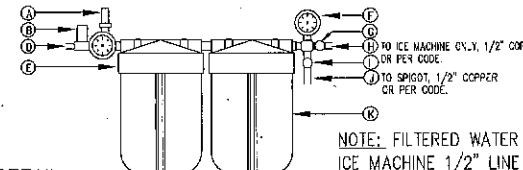
1 PLUMBING PLAN
A-3 1/4" = 1'-0"

PLUMBING SCHEDULE

| MARK | QTY | ORDERED BY | SUPPLIED BY | INSTALL BY | DESCRIPTION | MANUFACTURER | MODEL # | SIZE | FAUCET | WATER SUPPLY | DRAIN | COMMENTS |
|------|-----|------------|-------------|------------|-------------------------------------|------------------------------------|-----------------|--|-------------------------------|-------------------|--------------|---|
| P1 | 1 | ZEE | W. | W./G.C. | S/S HAND SINK | WASSERSTROM | | 14" L X 10"W X 7.5"D BOWL SIZE | ELKAY LK-4121 | 1/2" HOT AND COLD | 2" DRAIN | HAND SINK CABINET W/ DROP IN S.S. HAND SINK |
| P2 | 1 | ZEE | W. | W./G.C. | "BLENDER" SINK | WASSERSTROM | BOWL ON LEFT | 42.75" L X 27.5"W X 10"D BOWL SIZE | SPIGOT/ PRE-RINSE FAUCET, I&S | 1/2" HOT AND COLD | 2" DRAIN | 35 STRAINER, MAGUIRE MODEL 8903 P-TRAP WITH CLEANOUT PROVIDE FLOOR SINK |
| P3 | 1 | ZEE | W. | W. | ICE CHEST BELOW CABINET | WASSERSTROM | | 23.25"H X 20.5"W X 20.5" D | --- | --- | 1" DRAIN | STAINLESS STEEL ICE BIN CABINET DROP IN |
| P3a | 1 | ZEE | W. | W. | CUSTOM INSULATED ICE BIN - 892P III | WASSERSTROM | | 27.75" H X 30.5"W X 30.5" D | --- | --- | 3/4" DRAIN | CUSTOM UNIT W/ 8" INTERIOR REDUCTION |
| P4 | 1 | ZEE | W. | G.C. | S/S 3-COMP SINK | | | 84.25"W X 25.5"D | INCLUDED | 3/4" HOT AND COLD | FLOOR SINK | DRAINBOARD ON BOTH SIDES-PROVIDE FLOOR SINK (3) SINK BOWLS EA. 16"W X 20"D X 14"H SILICON AROUND SINK AT WALL |
| P5 | 1 | ZEE | G.C. | G.C. | WATER HEATER | COMMERCIAL GRADE ONLY-SUBMIT SPECS | | 21"9 X 29"5H | --- | 3/4" NPT | 2" DRAIN | DRAINBOARD ON BOTH SIDES-PROVIDE FLOOR SINK (3) SINK BOWLS EA. 16"W X 20"D X 14"H SILICON AROUND SINK AT WALL |
| P6 | 1 | G.C. | G.C. | G.C. | MOP SINK | SUBMIT SPECS | FLOOR MODEL | 24" WX 24"D X 10"H | 10" LONG KITCHEN SPOUT | 1/2" HOT AND COLD | 2" DRAIN | TOP OF FRONT RM MOUNTED AT 34" AFF |
| P7 | 2 | G.C. | G.C. | G.C. | WALL HUNG LAVATORY | AMERICAN STD. | G355.012 | 24" WX 24"D X 10"H | 10" LONG KITCHEN SPOUT | 1/2" HOT AND COLD | 2" DRAIN | TOP OF FRONT RM MOUNTED AT 34" AFF |
| P8 | 2 | G.C. | G.C. | G.C. | TOILET (ADA COMPLIANT) | AMERICAN STD. | FLOOR MODEL | 20"W X 18"D | ELKAY LK-4417 | 1/2" COLD | 4" SEWER | PROVIDE OPEN FRONT SEAT. INSTALL TOP OF SEAT @ 10" AFF |
| P9 | | | | | NOT USED | | | | | | | |
| P10 | | | | | | | | | | | | |
| P11 | 1 | ZEE | W. | W./G.C. | DIPPERWELL | THE DIPPERWELL CO. | 10" STANDARD | 10" L X 3"W X 6"H | --- | 1/2" COLD | 1 1/4" DRAIN | DRAIN TO BLENDER SINK FLOOR SINK ATTACH TO SIDE OF BLENDER CABINET. DRAIN TO BE MINIMALLY EXPOSED ON OUTSIDE OF CABINET. OPTION: DRAIN TO BLENDER SINK FLOOR SINK ATTACH TO SIDE OF BLENDER CABINET. DRAIN TO BE MINIMALLY EXPOSED ON OUTSIDE OF CABINET. |
| P11a | 0 | ZEE | W. | W./G.C. | DIPPERWELL | WESTERN PIONEER | 16.25" STANDARD | 16.25" L X 4"W X 4"H | --- | 1/2" COLD | 1 1/4" DRAIN | DRAIN TO BLENDER SINK FLOOR SINK ATTACH TO SIDE OF BLENDER CABINET. DRAIN TO BE MINIMALLY EXPOSED ON OUTSIDE OF CABINET. |
| P12 | 1 | ZEE | W. | W./G.C. | S/S HAND SINK | WASSERSTROM | WAS10900101CUBF | 13 1/2" L X 9 3/4"W X 6 3/4" BOWL SIZE | INCLUDED | 1/2" HOT AND COLD | 2" DRAIN | WITH SPLISH GUARDS AT REAR AND SIDES - EACH HAND SINK TO INCLUDE S.S. PAPER TOWEL HOLDER AND S.S. SOAP DISPENSER W/ ORGER |
| P13 | 1 | ZEE | W. | G.C. | WATER FILTER | WESTERN PURIFIER | SK-HFW507 | 18" H X 25" W X 9"D | | | | 1/2" COPPER TUBING TO SPIGOT. INDEPENDENT 1/2" COPPER TUBING TO ICE MACHINE. |
| P14 | 1 | ZEE | W. | G.C. | WATER SPIGOT | WESTERN PURIFIER | | | | | | TUBING TO SPIGOT FROM FILTER. REF. DTL 6/A-3 |
| | | | | | ICE CUBER MACHINE | HOSHIZAKI | | | | | | ** SEE NOTES 7 & 10 |
| | | | | | ICE STORAGE BIN | HOSHIZAKI | | | | | | 3/4" FPT DRAIN ALL DRAINS TO BE ROUTED SEPARATELY |

EQUIPMENT AND PLUMBING NOTES:

- ALL LAVATORIES AND SINKS IN THE FOOD PREP. AREA TO BE SUPPLIED WITH HOT (MIN 120 F) AND COLD RUNNING WATER UNDER PRESSURE.
- ALL LAVATORIES OR HAND SINKS WILL HAVE A COMBINATION FAUCET OR PREMIXING FAUCET CAPABLE OF SUPPLYING TEMPERED WATER FOR A MIN. OF 10 SECS.
- THE MOP SINK FAUCET TO BE PROVIDED WITH AN APPROVED BACK FLOW PREVENTION DEVICE.
- ALL PLUMBING/WATER SUPPLY MUST BE INSTALLED ACCORDING TO LOCAL PLUMBING CODE STANDARDS.
- ALL SEWAGE, INCLUDING MOP WATER OR WASTEWATER, MUST BE DISPOSED INTO A SANITARY SEWER.
- PROVIDE INDIRECT DRAINS FOR ALL EQUIPMENT REQUIRING DRAINAGE (ICE MACHINE, ETC.) AS PER CODE.
- THE ICE MACHINE HAS A REMOTE CONDENSER WHICH IS NORMALLY MOUNTED ON THE ROOF OF THE STORE. ROOF PENETRATION BY G.C. FINAL ELECTRICAL AND PLUMBING HOOKUPS BY G.C. DISCONNECT (IF REQUIRED BY LOCAL CODES) FOR ICE MACHINE CONDENSER BY G.C. USE LANDLORD'S ROOFER UNLESS INFORMED OTHERWISE IN WRITING. PLEASE VERIFY WITH YOUR LANDLORD IF THIS INSTALLATION IS POSSIBLE. OTHERWISE, CONTACT SMOOTHIE KING FOR A SELF CONTAINED ICE MACHINE MODEL AND REQUIREMENTS. PROVIDE REMOTE CONDENSER AND A 35' PRE-CHARGED TUBING KIT R-404-3546-2. VOLTAGE SUPPLY FOR THE URC REMOTE CONDENSER IS SUPPLIED FROM THE ICE MAKER. (SUPPLIED BY WASSERSTROM OR ICE MACHINE VENDOR) ALLOW 6" CLEAR BEHIND UNIT FOR AIR CIRCULATION.
- ALL PLUMBING FIXTURES TO BE INSTALLED BY CONTRACTOR.
- ALL PLUMBING FIXTURES TO BE INSTALLED BY CONTRACTOR.
- ICE CUBER MACHINE START UP BY A CERTIFIED REFRIGERATION TECHNICIAN AS PER HOSHIZAKI REQUIREMENTS.
- ADD MAIN WATER SHUT-OFF VALVE AND MARK CLEARLY.
- ANY ROOF PENETRATIONS SHALL BE PROVIDED BY G.C. USING LANDLORD'S ROOFER AT TENANTS EXPENSE. (INCLUDE IN G.C.'S COST)



5 FILTER DETAIL
A-3 NOT TO SCALE

- WATER FILTRATION SYSTEM**
 A. INLET PRESSURE REGULATOR/GAUGE
 B. INLET WATER SHUTOFF
 C. WATER INLET - 1/2" TUBING
 D. PRE-FILTER HOUSING
 E. OUTLET PRESSURE GAUGE
 F. ICE MACHINE SHUTOFF
 G. OUTLET TO ICE MACHINE - CONVERT FROM 3/8" TO 1/2" & RUN 1/2" TUBING TO ICE MACHINE
 H. REMOTE FAUCET SHUTOFF
 I. OUTLET TO SPIGOT - 1/2" TUBING
 K. POST-FILTER HOUSING

DESIGN DOCUMENTS
SMOOTHIE KING # 1283
 JEFFREY & PAULA CONWAY & DAVID HALPERN
 351 KING ST. CHARLESTON, SC 29401

SMOOTHIE KING FRANCHISES, INC.
 3900 N. CAUSEWAY BLVD.
 SUITE 1300
 METAIRIE, LA 70002
 PH (985) 635-6973 FAX (985) 635-6987

Date: 10/20/2014
 Drawn by: BKS
 Chkd/Revised by: RRS

PLUMBING PLAN
 Sheet No.
A-3

CEILING LEGEND

| MARK | ORDERED BY | SUPPLIED BY | INSTALL BY | DESCRIPTION |
|------|------------|-------------|------------|---|
| CT-1 | G.C. | USG | G.C. | "Frost ClimaPlus" 24"x24" ANGLED EDGE CEILING TILES-ITEM # ITEM 414 WHITE WHITE FORM USG, WHITE 15/16" EXPOSED TEE GRID SYSTEM, OR EQUAL USED AT RETAIL AREA AND RESTROOMS. |
| CT-2 | G.C. | USG | G.C. | "Versa ClimaPlus Healthcare" 24"x24" ANGLED EDGE CEILING SYSTEM-ITEM#5664 WHITE, WHITE 15/16" EXPOSED TEE GRID SYSTEM 302; MARS CLIMAPLUS CEILING MEETS USDA/FSIS GUIDELINES FOR FOOD PROCESSING AREA, SMOOTH CLEAN DURABLE FINISH-IMPACT, SCRATCH AND SOIL RESISTANT, WATER REPELLENT, WASHABLE AND SCRUBBABLE, SAFE FOR USE WITH DISINFECTANTS, EXCELLENT SOUND ABSORPTION. |
| CT-3 | G.C. | USG | G.C. | "Frost" 24"x24" SQUARE EDGE CEILING TILES - ITEM 412 - SW6321 RED BAY BY USG, w/ SW6321 (RED BAY) 15/16" EXPOSED TEE GRID SYSTEM, USED AT RETAIL AREA ABOVE LAM-LITE BEAMS. |
| CT-4 | G.C. | USG | G.C. | "SHEETROCK LAY IN PANEL" 24"x48" SQUARE EDGE CEILING TILES - ITEM 3270 - WHITE BY USG, WHITE 15/16" EXPOSED TEE GRID SYSTEM, USED USED AT BACK OF HOUSE IN OFFICES |
| CT-5 | G.C. | LAM-LITE | G.C. | 1 1/2" x 6" LAM-LITE BEAMS (CONTACT LEE 1-800-422-3556) |

THE PATTERN OF THE TILE AND LAM-LITE BEAMS ARE TO SHOULD RUN AS SHOWN ON PLAN.
 CONTACT USG (FLORIDA) DROP CEILING & GRID - RAY WATSON (407) 521-7330
 CONTACT USG (TEXAS) DROP CEILING & GRID - PAUL DEAN (713) 462-0100
 LAM-LITE - LEE - 1-800-422-3556

LIGHTING NOTES:

- IF APPLICABLE, RELOCATE EXISTING PRISMATIC 2 X 4 LIGHT FIXTURES IN THE BACK AREA AS NECESSARY DUE TO THE NEW STORE LAYOUT.
- REPLACE BROKEN LIGHT BULBS AS REQUIRED. PROVIDE CONDUIT, WIRE, LIGHT FIXTURES, ETC. TO ACCOMMODATE NEW LIGHTING ARRANGEMENT AND AS REQUIRED TO MAINTAIN CIRCUIT CONTINUITY OF LIGHTS TO REMAIN.
- RELOCATE EXISTING LIGHT SWITCHES AS REQUIRED. SEE LIGHTING SWITCHING LEGEND.
- EXIT SIGNS COMPLYING WITH 101:5-10 SHALL DEFINE EXITS AND ACCESS TO EXITS WHERE THE EXIT IS NOT IMMEDIATELY APPARENT.
- IF THERE IS AN EXISTING FIRE ALARM SYSTEM, MODIFICATIONS SHALL BE DONE IN ACCORDANCE WITH NFPA 101, NFPA 72 AND ADA-AG.

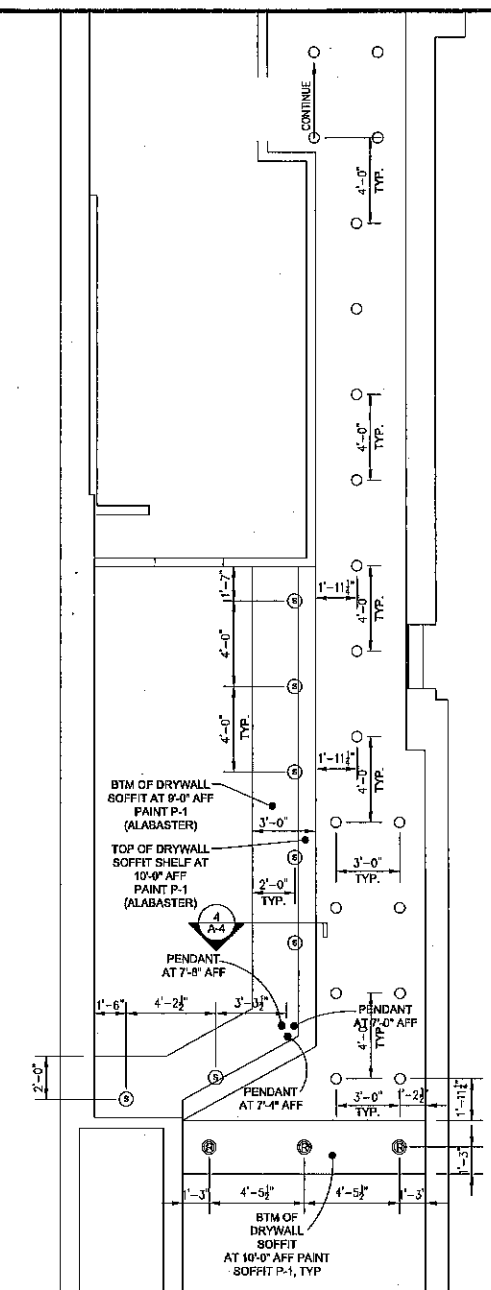
MECHANICAL NOTES:

- AFTER DIFFUSER INSTALLATION, CONTRACTOR SHALL PERFORM A PRELIMINARY FUNCTIONAL TEST ON ALL DIFFUSERS TO PROVE THAT ALL DIFFUSERS RESPOND TO THE THERMOSTAT SIGNAL CALLING FOR THE COMPLETE SHUT-OFF OF AIR DELIVERY WHEN SATISFIED, AND THAT ALL CONTROL TUBES AND CAPS ARE PROPERLY CONNECTED.
- CONTRACTOR TO REMOVE PIPING WHICH IS IN THE WAY OF NEW CONSTRUCTION AND CAP PIPING AS REQUIRED.

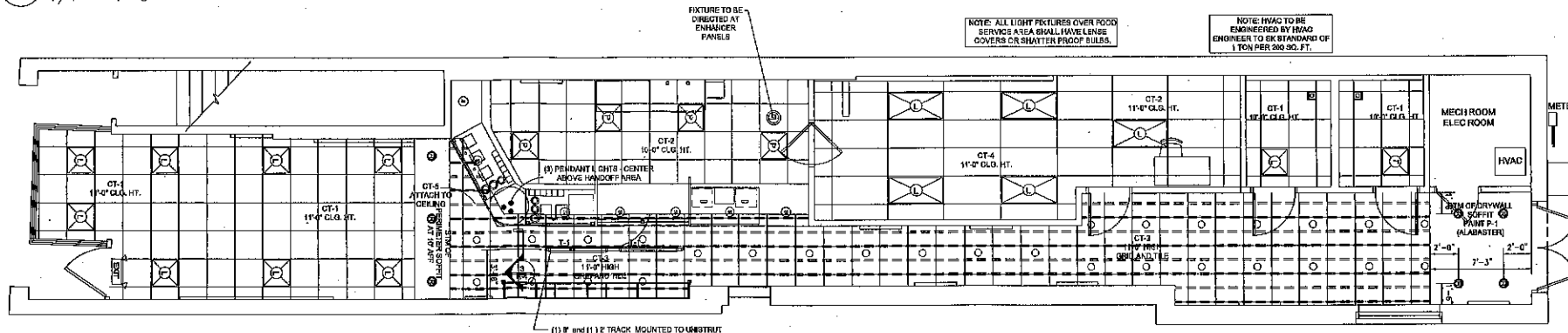
LIGHTING & MECHANICAL LEGEND

| MARK | ORDERED BY | SUPPLIED BY | INSTALL BY | DESCRIPTION | COMMENTS |
|------|------------|-------------|------------|---|---|
| — | ZEE | S.L. | G.C. | JUNO TRACKS (RHW) OR B' TRACK (RHW), ADJ. CONNECTOR (R2HW), LIVE END FEEDS (R3HW) (BLACK TRACK) | C.C. TO PROVIDE ALL NECESSARY POWER FEEDS, ETC. |
| — | ZEE | S.L. | G.C. | JUNO TRACK-WATER WALL WASH/7590 CLOSE TO TRACK (BLACK) (15142-86) (3) 3/16 HIGH LUMEN FLUORESCENT LAMPS | AT RETAIL AREA |
| ○ | ZEE | S.L. | G.C. | CEILING MOUNTED H-LITE H-10274-9H (GRAY) | MOUNT DIRECTLY TO DROP CEILING IN RETAIL AREA |
| ⊙ | ZEE | S.L. | G.C. | JAME YOUNG PENDANT- CUSHION PUMPS (3) 49W 419-SHATTER PROOF LAMP- 7" RD X 9" H. | TO BE INSTALLED OVER BAR |
| ⊙ | ZEE | S.L. | G.C. | RECESSED LIGHT FIXTURE (DIRECTIONAL) - CONTECH LIGHTING-RLS3003-P w/ PAR30-14 LAMP | INSTALLED IN DROP CEILING - DIRECTED TOWARDS ENHANCER PANEL |
| ⊙ | ZEE | S.L. | G.C. | RECESSED LIGHT FIXTURE - CONTECH LIGHTING-RLS3002-GR | TO BE INSTALLED IN SOFFITS |
| ⊙ | ZEE | S.L. | G.C. | RECESSED LIGHT FIXTURE - CONTECH LIGHTING-DRT182-P. | TO BE INSTALLED IN SOFFITS OVER PREP AREA ONLY |
| ⊙ | ZEE | S.L. | G.C. | 2' X 2' MODULAR PARABOLIC TROFFERS, COOPER LIGHTING - METALUX 2E230X-20E8-UNV-E881 | OVER CUSTOMER AREA ONLY |
| ⊙ | ZEE | S.L. | G.C. | SAME AS ABOVE EXCEPT ON DIRECT WIRE TO PANEL | |
| ⊙ | ZEE | S.L. | G.C. | 2' X 2' LENSED TROFFER, COOPER LIGHTING - ALL PRO APT-2067B | TO BE INSTALLED IN SERVICE AREA ONLY |
| ⊙ | ZEE | S.L. | G.C. | 2' X 4' LENSED TROFFER, COOPER LIGHTING - ALL PRO APT-232 | TO BE INSTALLED IN BACK AREA ONLY |
| ⊙ | ZEE | S.L. | G.C. | SAME AS ABOVE EXCEPT ON DIRECT WIRE TO PANEL | |
| ⊙ | ZEE | AS IS | AS IS | EXISTING 2X4 LIGHTING | |
| EXIT | ZEE | G.C. | G.C. | NAVILITE EXIT LIGHT w/ BATTERY BACKUP MODEL #NVP330M | TO BE INSTALLED IN BACK AREA ONLY |
| EXIT | ZEE | G.C. | G.C. | ASIRALITE - HEAD EMERGENCY LIGHT E4-1-W | TO BE INSTALLED IN BACK AREA ONLY |
| EXIT | ZEE | G.C. | G.C. | NAVILITE EXIT / EMERGENCY COMBINATOR LIGHT MODEL #NVP330M (OR EXISTING) | TO BE INSTALLED IN REST ROOM ONLY - BY G.C. |
| ⊙ | ZEE | G.C. | G.C. | VENT - NATIONE M8-666H ECONOMY FAN (OR EXISTING) | |
| ⊙ | G.C. | G.C. | G.C. | SUPPLY AIR DIFFUSER- NEW OR RELOCATED.- PAINT TO MATCH CEILING. | |
| ⊙ | G.C. | G.C. | G.C. | RETURN AIR GRILLE- NEW OR RELOCATED.- PAINT TO MATCH CEILING | |

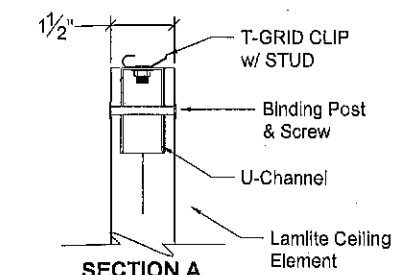
*PLUMBING NOTES:
 CONTACT JASON PRANTA W/ SPECIALTY LIGHTING GROUP @ (950) 787-0110 X235 FOR LIGHTING ORDERS AND NATIONAL PRICING.



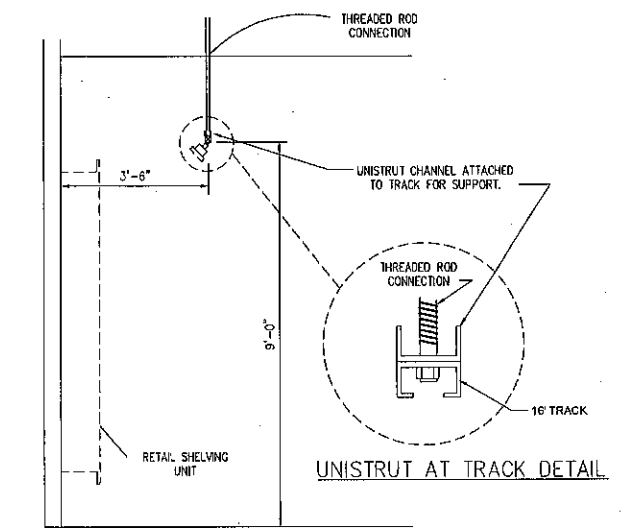
2 SOFFIT PLAN
 A-4 1/4" = 1'-0"



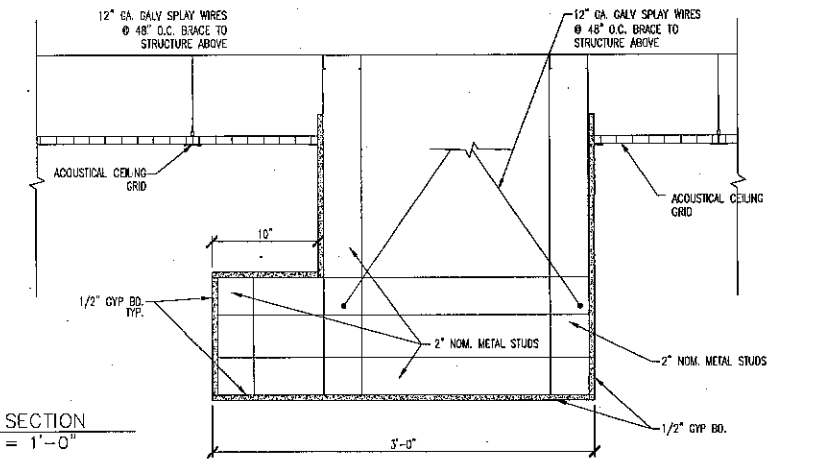
1 REFLECTED CEILING PLAN
 A-4 3/16" = 1'-0"



3 LAMLITE-BEAM MOUNTING SECTION
 A-4 6" = 1'-0"



TRACK LIGHTING MOUNTING HEIGHT DETAIL
 SCALE: 1/2" = 1'-0"



4 SOFFIT SECTION
 A-4 1 1/2" = 1'-0"

DESIGN DOCUMENTS
SMOOTHIE KING #1283
 JEFFREY & PAULA CONWAY & DAVID HALPERN
 351 KING ST. CHARLESTON, SC 29401

SMOOTHIE KING FRANCHISES, INC.
 3900 N. CAUSEWAY BLVD.
 SUITE 1300
 METAIRIE, LA 70002
 PH (985) 635-6973 FAX (985) 635-6987

Date: 10/20/2014
 Drawn by: DKS
 Chkd/Revised by: RRS

RCP PLAN
 Sheet No.
A-4

EQUIPMENT SCHEDULE

| MARK | QTY | ORDERED BY | SUPPLIED BY | INSTALL BY | DESCRIPTION | MANUFACTURER | MODEL # | SIZE | ELECTRICAL SPECIFICATIONS | HEIGHT | COMMENTS | |
|------|-----|------------|-------------|------------|---|----------------------|-------------------------|----------------------------|--|---------------------------------------|----------------|--|
| E1 | 1 | ZEE | W. | G.C. | PREP TABLE ON CASTORS | TRUE | FSSJ-48-18WB (MEGA TOP) | 48.25" L X 34" D X 46.5" H | 9 AMP/115V/60, 1/3 HP | DED. CIR./NEMA 5-15 | 18" AFF | UNIT DESIGN TO HOLD FOOD AT 41°F OR BELOW |
| E1A | | | | | NOT USED | | | | | | | |
| E2 | 2 | ZEE | RCS | G.C. | POS W/ FOCUS SOFTWARE | RCS | | | | | IN CAB. | PROVIDE DATA JACKS AS NOTED; SECOND POS IS OPTIONAL |
| E3 | 1 | ZEE | W. | W. | FLAT TOP HORIZONTAL SWIRLING FREEZER | MASTER-BILT | DC-60 | 43"W X 30"D X 34"H | 5.7 AMP/115V/60/1 | NEMA 5-15P | 18" AFF | 1/2" HD - ON CASTERS |
| E4 | 2 | ZEE | VTA-MIX | G.C. | BLENDED STATION ADVANCE ON-COUNTER BLENDERS | VITA-MIX | 36021 | 9.25"W X 10.5"D X 19.38"H | 15 AMP/120VAC/50/60Hz | DED. CIRUIT, 20 AMP OUTLET, EACH UNIT | IN CAB. | WITH ADVANCE CONTAINER AND BLADE - OPTIONAL 5TH BLENDER |
| E5 | 1 | ZEE | W. | W. | GLASS DOOR MERCHANDISER COOLER | TRUE | GOM-191-LD | 27"W X 25"D X 78.5"H | 8.1 AMP/115V/60/1/3 HP | DED. CIR./NEMA 5-15 | 22" AFF | |
| E6 | 0 | ZEE | W. | W. | SELF SERVICE MERCHANDISER | FEDERAL | SBRYS-5042 | 50"W X 34"W X 42" H | 10 AMP/230V/60/1/2 HP | | | NOTE: PLUS GENERAL RECEPTACLE 120V-15AMP REQUIRED |
| E7 | 0 | ZEE | W. | W. | U. C. REFRIGERATOR | TRUE | TUC-48-1P | 48.5"W X 30.25"D X 32" H | 6.4 AMP/120/60/1/1/3 HP | DED. CIR./NEMA 5-15 | 18" AFF | |
| E8 | 1 | ZEE | ZEE | G.C. | ICE CUBER MACHINE | HOSHIZAKI | KW-650RH | 22"W X 27.5"D X 37.5"H | | | | REF ICE MACHINE NOTE ON A-5 - ALSO SEE PLUMBING REQUIREMENTS ON SHEET A-3 AT BOTTOM OF PLUMBING SCHEDULE/ 1/2" FILTERED WATER LINE |
| E9 | 1 | ZEE | ZEE | W./G.C. | ICE STORAGE BIN | HOSHIZAKI | B-700PF | 44"W X 32.5"D X 46"H | | | 3/4" FPT DRAIN | |
| E10 | 1 | ZEE | ZEE | G.C. | REACH-IN REFRIGERATOR ON CASTORS | TRUE | T-49 | 84"W X 28.5"D X 83.5"H | 9.1 AMP/115V/60/1/2 HP | DED. CIR./NEMA 5-15 | 12" AFF | |
| E11 | 1 | ZEE | ZEE | G.C. | REACH-IN FREEZER ON CASTORS | TRUE | T-72F | 78"W X 29.5"D X 83.5"H | 115V/60/1/20 AMP TRD. CIR. - NEMA 5-20R DRWS-12 AMPS/HP | | 12" AFF | NOTE: IF USING AN OLDER FREEZER PSE 2009, THIS MAY HAVE DIFFERENT ELECTRICAL REQUIREMENTS. CHECK WITH THE MANUFACTURER BEFORE INSTALLING ELECTRICAL OUTLETS. |
| E12 | 1 | ZEE | ZEE | G.C. | PERSONAL COMPUTER | | | | DED. CIR./GROUND INSULATED/ AND ISOLATED DATA/PHONE JACK | | 18" AFF | |
| E13 | 1 | ZEE | ZEE | ZEE | LETTER FAB | LETTERFAB | "SMOOTHIE KING" | | 4 AMP | DUPLX OUTLET | CLC. HGT | OBTAIN APPROVAL FROM LANDLORD AND LOCAL CITY DEPT. BEFORE ORDERING. (WARREN -1-800-787-5061) |
| E14 | 1 | ZEE | HC | G.C. | "OPEN" SIGN | HOWARD COMP | "OPEN" | | 4 AMP | DUPLX OUTLET | CLC. HGT | OBTAIN APPROVAL FROM LANDLORD AND LOCAL CITY DEPT. BEFORE ORDERING. (BICHOLAS STAFF - 262-317-7751) |
| E15 | TBD | ZEE | TBD | TBD | EXTERIOR SIGNAGE | EXTERIOR SIGN VENDOR | TBD | TBD | 20 AMP | DEDICATED CIRCUIT J-BOX | SEE NOTE | OBTAIN APPROVAL FROM LANDLORD AND LOCAL CITY DEPT. BEFORE ORDERING AND PLACING SIGNAGE (MUST HAVE APPROVED SIGNAGE DRAWINGS FROM SK DESIGN DEPARTMENT) |
| E16 | 1 | ZEE | ZEE | ZEE | STANDARD MUSIC PACKAGE: SPEAKERS, 1 SATELLITE SDR, 1 AMPLIFIER & RECEIVER-ENCLOSING | MUZAK | | 8" x WITH 10 OZ. MAGNET | | | | SPEAKER, COVERS AND TRANSFORMERS- LOCATE BY VENDOR - MATCH CEILING COLOR |
| E17 | 0 | ZEE | HME | HME | DRIVE THRU SPEAKER PACKAGE W/ 4 HEADSETS | | | | | | | |
| E18 | 1 | ZEE | ZEE | GC | BACK DOOR ENTRY ALARM | DETEX | EAX-500 | | BATTERY OPERATED | | | ENTRY DOOR ALARM - INSTALL ON LATCH OF DOOR - MOUNTING HEIGHT TO BE COORDINATED WITH FRANCHISEE |

ICE MACHINE NOTES

NOTE: ICE MACHINE WILL BE DELIVERED TO THE JOB SITE AND SET IN PLACE BY WASSERSTROM. THE GENERAL CONTRACTOR'S RESPONSIBILITY IS THE FOLLOWING:

- ALL PLUMBING CONNECTIONS
- ALL ELECTRICAL CONNECTIONS
- DISCONNECT ON ROOF (IF REQ'D BY LOCAL CODES)

G.C. SHALL CONTACT W/ LOCAL HOSHIZAKI INSTALLER TO PROVIDE THE FOLLOWING:

- SET CONDENSER ON ROOF IF REMOTE UNIT (PLACE ON PLATFORM & TIE-DOWN IF REQ'D. BY LOCAL CODES)
- RUN REFRIGERANT LINES FROM ICE MACHINE TO ROOF TO CONDENSER.
- START UP OF ICE MACHINE BY HOSHIZAKI CERTIFIED INSTALLER.

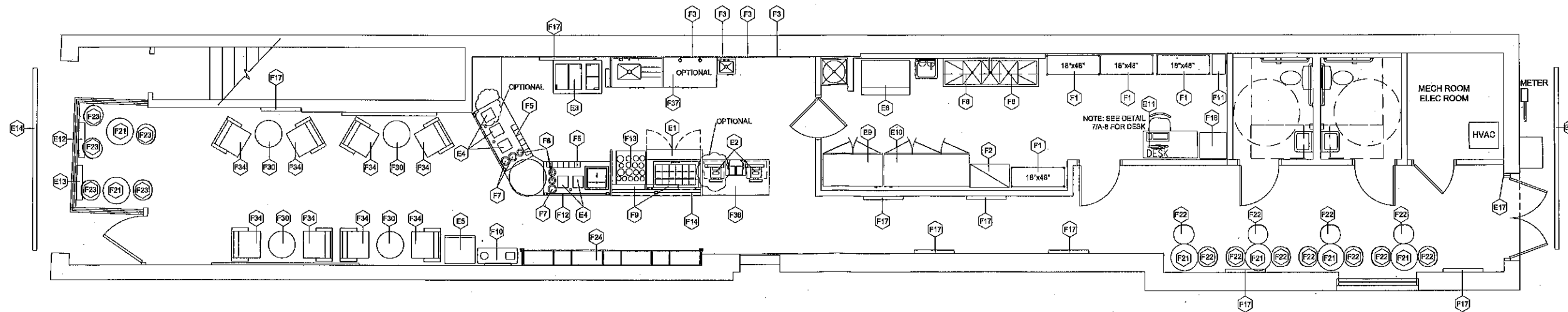
FIXTURES SCHEDULE

| MARK | QTY | ORDERED BY | SUPPLIED BY | INSTALL BY | DESCRIPTION | SIZE |
|------|-----|------------|-------------|------------|---|---|
| F1 | 4 | ZEE | ZEE | G.C. | SUPPLY WIRE SHELF BY FOCUS FOOD SERVICE MODEL #F710_C CLASS 70, NSF RATED | REF. PLANS FOR SIZES |
| F2 | 1 | ZEE | ZEE | G.C. | BANANA WIRE SHELF BY IRSG | 38"W X 21"D |
| F3 | 4 | ZEE | VGS | G.C. | LIGHTED MENU BD. | 24" X 48" SCREEN; CONTACT TERESA 1-800-203-0301 EX. 113 |
| F4 | 0 | ZEE | LSI | LSI | DRIVE-THRU MENU BOARD | STANDARD SIZE |
| F5 | 2 | ZEE | W. | W. | U3 HOLDER BY SAN JAMAR MODEL L-10 TO BE DETERMINED | 19"W X 5.25"D X 8-1/2"H |
| F6 | 3 | ZEE | W. | W. | COUNTER MOUNT TYPE FOAM CUP DISPENSER | SAN JAMAR G3400 SERIES |
| F7 | 3 | ZEE | W. | W. | COUNTER MOUNT TYPE FOAM CUP DISPENSER | SAN JAMAR G3500 SERIES |
| F8 | 2 | ZEE | W. | W. | WALL MOUNTED WIRE SHELVING NSF RATED | ABOVE TRIPLE SINK 18" DEEP (W.L.F.) |
| F9 | 2 | ZEE | W. | W. | STAINLESS STEEL SHELF | 30"W X 5"D |
| F10 | 1 | ZEE | W. | W. | COUNTER FOR WAPANS AND TRASH BIN WITHIN CABINET | |
| F11 | 1 | ZEE | W. | G.C. | FLOOR MOUNTED WALL LOCKER | SPO LOCKERS - 18"x12"x78" LOCKER MODEL # 460064 |
| F12 | 1 | ZEE | W. | W. | BLINDER COUNTER W/ ICE BIN, CUP HOLDERS, SQUEEZE GUARD | INSTALLED BY WASSERSTROM |
| F13 | 1 | ZEE | W. | W. | STAINLESS STEEL POWDER TABLE ON CASTERS | INSTALLED BY WASSERSTROM |
| F14 | 1 | ZEE | W. | W. | J-SHAPED WALL W/ SMOOTH SURFACE TOP | NOT SHOWN |
| F15 | 1 | ZEE | W. | W. | STAINLESS STEEL WORK TABLE | 36" X 24" ON CASTERS (NOT SHOWN) |
| F16 | 1 | ZEE | ZEE | G.C. | SAFE DEPOSIT BOX | SAFE FITS TWO CASH DRAWERS & LOCKED BY A SEPARATE LOCKING COMPARTMENT FOR GROUPS - SAFE TO BE BOLTED TO THE FLOOR (BY G.C.) |
| F17 | 8 | ZEE | VGS | G.C. | 24" X 36" POSTER FRAME - BOTTOM OF FRAME AT 4' AFF, TYP | 24" X 36" CONTACT TERESA 1-800-203-0301 EX. 113 |
| F18 | 0 | ZEE | W. | W. | STRAW HOLDERS | ROUND STAINLESS STEEL STRAW HOLDERS-RECESSED IN CABINETRY |
| F19 | 2 | ZEE | N.M.S. | G.C. | 24" DIAMETER CAFE ROUND TABLE BAR HEIGHT TABLE | TO ORDER CAFE TABLE - CONTACT HARLIN AT 304-394-3695 |
| F20 | 0 | ZEE | W. | W. | FRESHWASH DRINK COUNTER IN SOLID SURFACE (BLESTONE-BLANCO SAMPLE) | LONG X OSEP |
| F21 | 4 | ZEE | N.M.S. | G.C. | 24" DIAMETER CAFE ROUND TABLE | TO ORDER CAFE TABLE - CONTACT HARLIN AT 304-394-3695 |

FIXTURES SCHEDULE (CONT.)

| MARK | QTY | ORDERED BY | SUPPLIED BY | INSTALL BY | DESCRIPTION | SIZE |
|------|-----|------------|-------------|------------|--|---|
| F22 | 11 | ZEE | N.M.S. | G.C. | WOOD CHAIR W/ RED VINYL SEAT | TO ORDER CHAIRS: CONTACT HARLIN AT 304-394-3695 |
| F23 | 5 | ZEE | N.M.S. | G.C. | WOOD BAN STOOL W/ RED VINYL SEAT | TO ORDER STOOLS: CONTACT HARLIN AT 304-394-3695 |
| F24 | 1 | ZEE | W. | W. | RETAIL SHELVING- | REF 7/A-8 AND A-7 FOR SIZE AND BLOCKING INSTRUCTIONS |
| F25 | 0 | ZEE | W. | W. | 42" HIGH COMMUNITY TABLE | MAGAZINE RACK BUILT INTO LEG POST ON EITHER SIDE |
| F26 | 0 | ZEE | VGS | G.C. | 48" X 36" EXT. POSTER FRAME - BOTTOM OF FRAME AT 4' AFF, TYP | 24" X 36" CONTACT TERESA 1-800-203-0301 EX. 113 |
| F27 | 0 | ZEE | W. | W. | DOUBLE SIDED RETAIL SHELVING UNIT-NEW DESIGN | 24" X 27" X 48" (OPTIONAL) |
| F28 | 4 | ZEE | ZEE | ZEE | 24" DIAMETER LOUNGE ROUND TABLE | TO ORDER LOUNGE TABLE - CONTACT HARLIN AT 304-394-3695 |
| F29 | 0 | ZEE | ZEE | ZEE | STAINLESS STEEL WORK TABLE | 30W X 24"D |
| F30 | 0 | ZEE | W. | W. | BANQUET SEATING | 3" WIG BANQUET SEATING BENCH |
| F31 | 0 | ZEE | W. | W. | BANQUET SEATING | 27" RADIUS CURVED BANQUET SEATING BENCH |
| F32 | 0 | ZEE | M.M.S. | ZEE | CYLINDER OTOMAN- 18.5" DIA X 18" H | OPTIONAL TO ORDER CLOTHED STOOL: CONTACT HARLIN AT 304-394-3695 |
| F33 | 8 | ZEE | M.M.S. | ZEE | LOUNGE SEATING | |
| F34 | 0 | ZEE | W. | W. | DRIVE THRU COUNTER | |
| F35 | 1 | ZEE | W. | W. | ORDER COUNTER | |
| F36 | 1 | ZEE | W. | W. | BACK HALL COUNTER | OPTIONAL COUNTER FOR PURCHASE |

REFERENCE A-5b - SK GRAPHIC LOCATIONS

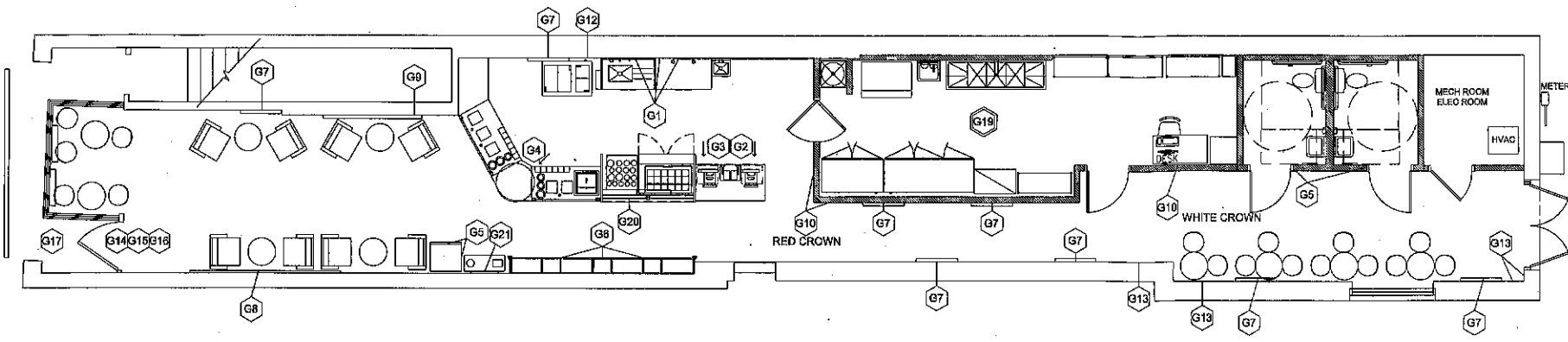


DESIGN DOCUMENTS
SMOOTHIE KING # 1283
JEFFREY & PAULA CONWAY & DAVID HALPERN
351 KING ST. CHARLESTON, SC 29401

SMOOTHIE KING FRANCHISES, INC.
3900 N. CAUSEWAY BLVD.
SUITE 1300
METAIRIE, LA 70002
PH (985) 635-6973 FAX (985) 635-6987

Date: 10/20/2014
Drawn by: DKS
Chkd/Revised by:
RRS

EQUIPMENT PLAN
Sheet No.
A-5a



3 SK GRAPHICS PLAN
A-5b 3/16" = 1'-0"

GRAPHIC SCHEDULE (GRAPHICS BY STORE DECOR)

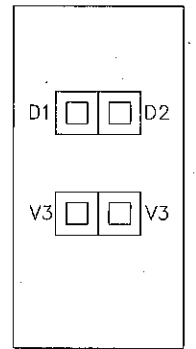
| MARK | QTY | ORDERED BY | INSTALL BY | DESCRIPTION | SIZE | REMARKS |
|------|-----|------------|------------|---|--------------------------------------|---|
| G1 | 1 | ZEE | G.C. | (SET) OF MENU BOARD INSERTS W/ ENLARGER HANGERS | 24" x 48" MENU INSERTS | REF - INTERIOR ELEVATIONS FOR MENU BOARD LOCATIONS. |
| G2 | 1 | ZEE | G.C. | HANGING - COFF SIZES SIGN | 18" x 14" | TOP OF SIGN IS TO HANG 2" BELOW BOTTOM OF SKEIT |
| G3 | 1 | ZEE | G.C. | HANGING - ORDER HERE SIGN | 27" x 8" | TOP OF SIGN IS TO HANG 2" BELOW BOTTOM OF SKEIT |
| G4 | 1 | ZEE | G.C. | HANGING - PICK UP HERE SIGN | 27" x 8" | TOP OF SIGN IS TO HANG 2" BELOW BOTTOM OF SKEIT |
| G5 | 1 | ZEE | G.C. | DISPLAY REFRIG. HEADER AND SIDE PANEL DECALS | VARIES DEPENDENT ON MODEL OF REFRIG. | CONFIRM MODEL # OF DISPLAY REFRIG. WHEN ORDERING |
| G6 | 1 | ZEE | G.C. | (SET) VERTICAL SKEILING HEADERS | 11'-5/8" x 66'-1/2" | INSTALL ON WALL MOUNTED REFRIG. CABINET DOORS |
| G7 | 8 | ZEE | G.C. | INTERIOR POSTERS | 36" T x 24" W | REF EQUIP. PLAN & INT. ELEV. FOR LOCATIONS |
| G8 | 1 | ZEE | G.C. | LARGE HISTORY GRAPHIC | 156" x 77" JPC GRAPHIC | LOCATED IN CUSTOMER AREA |
| G9 | 0 | ZEE | G.C. | SMALLER HISTORY GRAPHIC | 84" x 54'-1/2" JPC GRAPHIC | LOCATED IN CUSTOMER AREA |
| G10 | 1 | ZEE | G.C. | BIKER GRAPHIC | 67.5" W x 62.5" H | LOCATED IN CUSTOMER AREA |
| G11 | 0 | ZEE | G.C. | 8" WALL CROWN STENCIL | 8" WIDE | REF INTERIOR ELEVATIONS FOR EXACT LOCATIONS |
| G12 | 1 | ZEE | G.C. | (SET) RED AND WHITE CROWN GRAPHICS - CUT TO FIT ON SITE | 78" WIDE | REF INTERIOR ELEVATIONS FOR EXACT LOCATIONS |
| G13 | 1 | ZEE | G.C. | SMOOTHIES WITH A PURPOSE | VARIES | REF INTERIOR ELEVATIONS FOR EXACT LOCATIONS |
| G14 | 1 | ZEE | G.C. | RED WALL ACTIVE GRAPHIC | 47' x 100' W | REF INTERIOR ELEVATIONS FOR EXACT LOCATIONS |
| G15 | 1 | ZEE | G.C. | SK VINYL STORE HOURS GRAPHIC | 15" x 10" | LOCATED ON STORE FRONT DOOR - REF 3/A-2 |
| G16 | 1 | ZEE | G.C. | VINYL SK LOGO | 16" x 12-1/4" | LOCATED ON STORE FRONT DOOR - REF 3/A-2 |
| G17 | 1 | ZEE | G.C. | VINYL NO SMOKING GRAPHIC | 6" x 9" | LOCATED ON STORE FRONT DOOR - REF 3/A-2 |
| G18 | 1 | ZEE | G.C. | WiFi GRAPHIC | VARIES | LOCATED ON STOREFRONT GLAZING - COORDINATE W/ ZCC |
| G19 | 1 | ZEE | G.C. | RED WINDOW ACTIVE GRAPHIC | 28T x ---W | LOCATED ON STOREFRONT GLAZING - REF 3/A-2 TYP |
| G20 | 1 | ZEE | G.C. | (W) SK LABEL KIT | VARIES | COORDINATE W/ SK OPENING SUPPORT FOR PLACEMENT |
| G21 | 1 | ZEE | G.C. | (SET) SNEEZE GUARD ENLARGER GRAPHICS | 13 PRICE ACRYLIC SET | MOUNTED ON SNEEZE GUARD GLAZING - COORDINATE W/ SK CONSTRUCTION FOR EXACT PLACEMENT |
| G22 | 0 | ZEE | G.C. | MAGNETIC CHALK BOARD | 24" x 36" | REF ELEVATIONS - BTM OF CHALK BOARD AT 4' AFF |
| G23 | 0 | ZEE | G.C. | EXTERIOR POSTERS | 48" T x 36" W | EXTERIOR - BTM OF POSTER FRAMES AT 4' AFF |
| G24 | 0 | ZEE | G.C. | 4' TALL ACTIVE STENCIL GRAPHIC | 47' x ---W | REF EXTERIOR ELEVATIONS FOR EXACT LOCATIONS - PAINT TBD |

NOTE: REF INTERIOR ELEVATIONS ON SHEETS A-7 & A-8
** ↑ DIRECTIONAL ARROW DENOTES SIGN ORIENTATION **

2 TYP. DATA AND PHONE LOW VOLTAGE PLATE ELEVATION
A-5b 1/4" = 1'-0"

ELECTRICAL LEGEND

| MARK | DESCRIPTION |
|-------|--|
| ⊕ | NEW DUPLEX OUTLET |
| ⊕ | EXISTING DUPLEX OUTLET |
| ⊕ | NEW QUAD OUTLET |
| ⊕ | GROUND FAULT INTERRUPTER DUPLEX OUTLET |
| DC/IG | DEC. CIR./ ISOLATED CIRCUIT |
| ▽ | CAT-5 CABLE TERMINATED TO RNS WALL JACK WITH COVER PLATE |
| ⊕ | JUNCTION BOX |
| ⊕ | SINGLE POLE LIGHT SWITCH TO BE MOUNTED AT 4' AFF |
| ▽ | PHONE OUTLET |

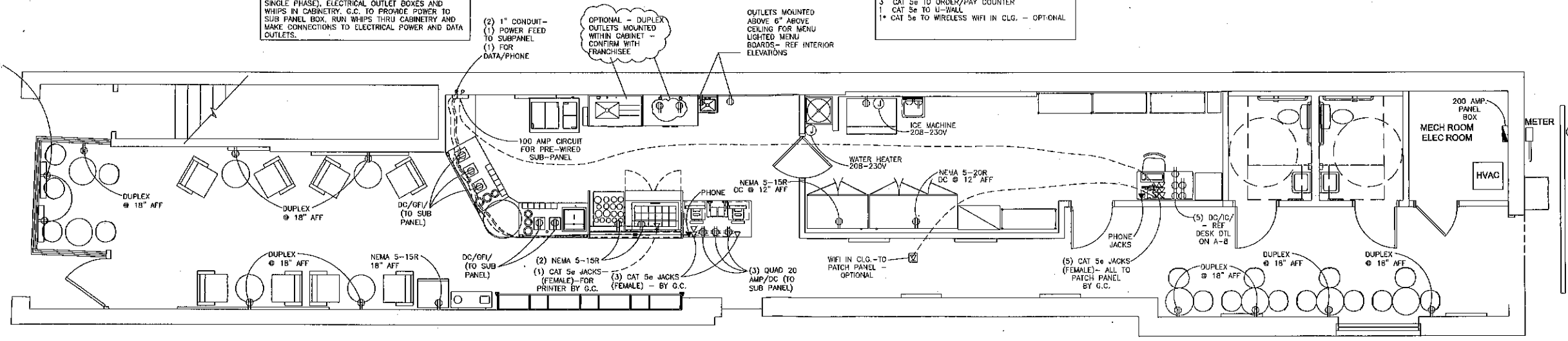


TYPICAL DATA AND PHONE PLATE DETAIL AT PAY/ORDER CABINET AND DRIVE THRU CABINET

WASSERSTROM PROVIDES AN 100 AMP SUB PANEL BOX (SQUARE D MODEL G0816L 10005, 208 VOLT, SINGLE PHASE), ELECTRICAL OUTLET BOXES AND WHIPS IN CABINETS. G.C. TO PROVIDE POWER TO SUB PANEL BOX, RUN WHIPS THRU CABINETS AND MAKE CONNECTIONS TO ELECTRICAL POWER AND DATA OUTLETS.

NOTE: RUN (5) CAT 5e PLENUM RATED CABLES FROM OFFICE DESK PATCH PANEL THRU CEILING TO:
3 CAT 5e TO ORDER/PAY COUNTER
1 CAT 5e TO LI-WALL
1* CAT 5e TO WIRELESS WiFi IN CLG. - OPTIONAL

ON WALL AT 6" ABOVE CLO. OUTLETS TO BE TIED INTO LIGHT SWITCHES (IF ALLOWABLE BY LOCAL CODES AND LANDLORD)



NOTE: SK REQUIRES A 200 AMP PANEL BOX. PLEASE HAVE ELECTRICAL ENGINEER VERIFY THAT EXISTING PANEL IS ADEQUATE TO SUPPLY ALL THE ELECTRICAL NEEDS OF THE STORE.

1 ELECTRICAL PLAN
A-5b 1/4" = 1'-0"

DESIGN DOCUMENTS
SMOOTHIE KING #1283
JEFFREY & PAULA CONWAY & DAVID HALPERN
351 KING ST. CHARLESTON, SC 29401

SMOOTHIE KING FRANCHISES, INC.
3900 N. CAUSEWAY BLVD.
SUITE 1300
METAIRIE, LA 70002
PH (985) 635-6973 FAX (985) 635-6987

Date: 10/20/2014
Drawn by: DKS
Chkd/Revised by: RRS

SK GRAPHICS & ELECTRICAL
Sheet No.

A-5b