

DILWORTH DRIVE-THRU

4 CENTER AVE W, DILWORTH, MN 56529

GOLDMARK™
COMMERCIAL REAL ESTATE INC

FOR SALE



HWY 10 HARD CORNER DRIVE-THRU FOR SALE

Size: 1,808 SF
Price: \$192,500

Andrew Hanson | Aaron Hill

701.239.5854 | 701.893.2827

andrew.hanson@goldmark.com | aaron.hill@goldmark.com

www.goldmarkcommercial.com

DILWORTH DRIVE-THRU

4 CENTER AVE W, DILWORTH, MN 56529



BUILDING SIZE

1,808 SF

PRICE

\$192,500

YEAR BUILT

1964

LOT SIZE

11,020 SF +/- | 0.253 Acres

PARCEL NUMBER

52.650.1060

2025 TAXES & SPECIALS

\$2,936

ZONING

Traditional Mixed-Use (MU-1)

FLOOD PLAIN

Zone X (500 year)

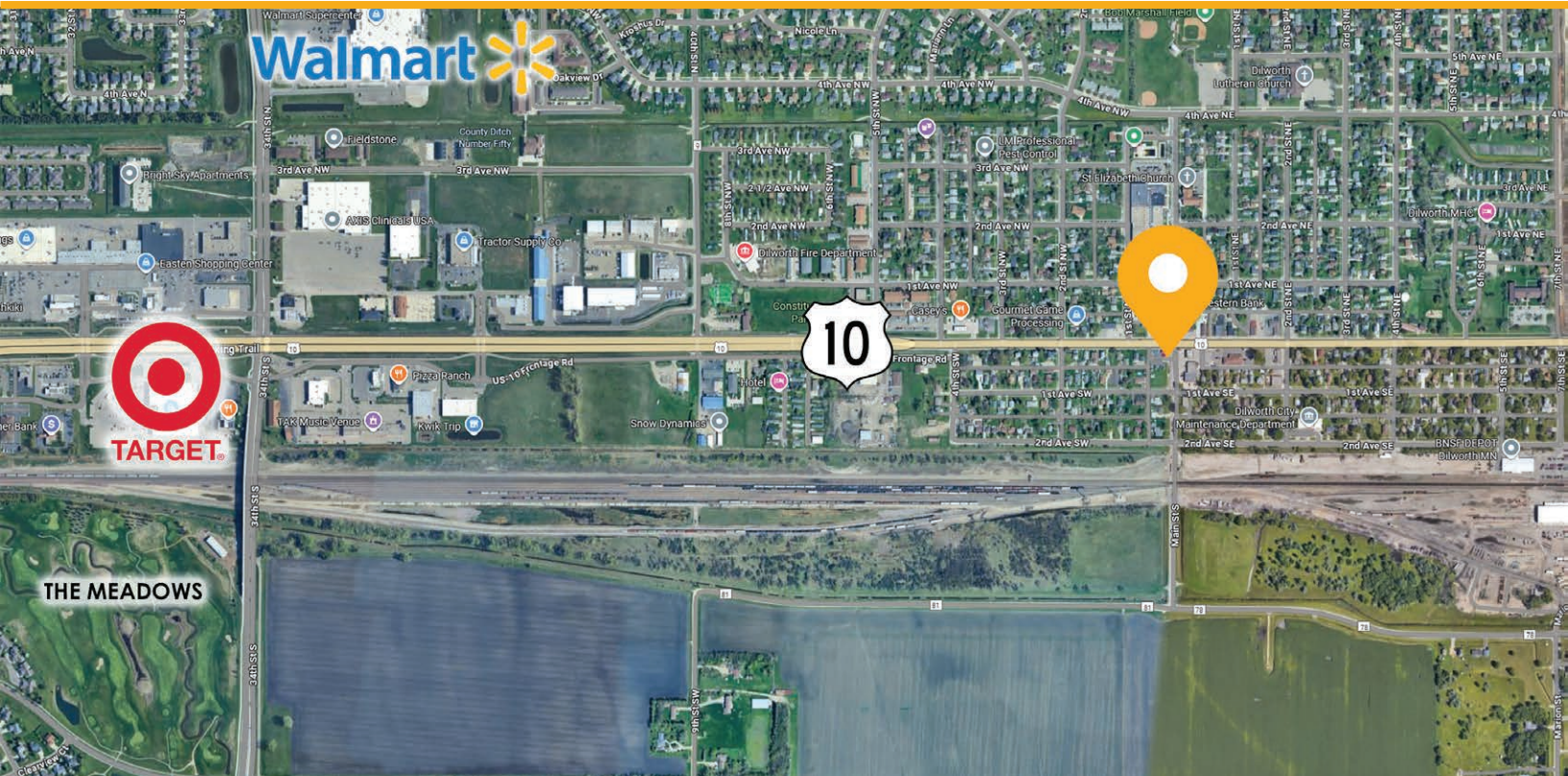
PROPERTY DESCRIPTION:

Unlock the potential of this versatile retail property right on Highway 10 in the heart of Dilworth. With 13,000 vehicles per day driving by, this space has the visibility and access to make your dream of entrepreneurship a reality. Whether you're currently operating a food truck and ready for the next step, starting from scratch or looking to expand, this site offers everything you will need, including drive-through capabilities and a large parking area.

FEATURES:

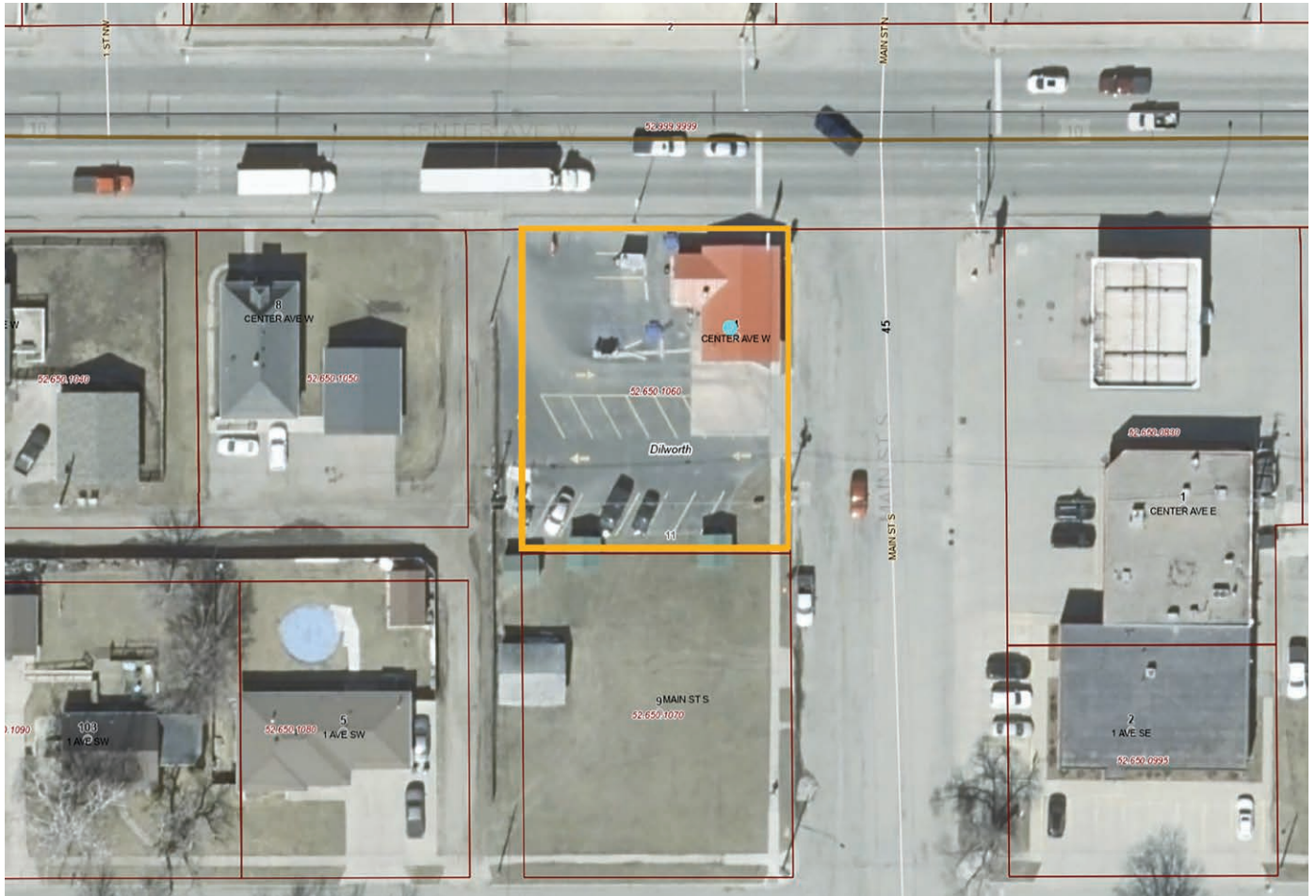
- 2024 Traffic Counts: 12,958 VPD
- 15 parking spaces
- All kitchen equipment included (Full List on page 6)

This information has been secured from sources we believe to be reliable, but we make no representation or warranties, expressed or implied, as to the accuracy of the information. Interested parties should conduct their own independent investigations and rely only on those results.



4 CENTER AVE W, DILWORTH, MN 56529

PARCEL VIEW



DILWORTH DRIVE-THRU

4 CENTER AVE W, DILWORTH, MN 56529

GOLDMARK™
COMMERCIAL REAL ESTATE INC

INTERIOR PHOTOS



DILWORTH DRIVE-THRU

4 CENTER AVE W, DILWORTH, MN 56529



DILWORTH DRIVE-THRU

4 CENTER AVE W, DILWORTH, MN 56529

Food Tray Warmer
Soup Warmer
3 Basin Sink
Single Basin Hand Wash Sink
Aurora Griddle Grill
Small mount table under Aurora Griddle
Cone and topping dispenser
Hamilton Beach three headed ice cream mixer
Mix'n Machine ice cream mixer
Cooktek Induction Heat top
Tri Star TSF 40-50-N
Saturn 2 door refrigerated Prep Table, 60 inch, no sandwich top
True 2 door refrigerated prep table with sandwich top
Meat Slicer, unknown manufacturer
Walk-in Norlake Freeze, 6x8
Stoddard Quick Food Cabinet
Taylor 794-33 3ph Air Soft Serve Machine
Manitowac Ice Machine
72x30 Stainless Steel prep table (under food warmers and ice cream topping dispenser)
Commercial Prep Table 30x30 (under ice cream mixers)
30x36 commercial prep table on casters (under slicer)
Small dry shelving units, 2 feet tall
48wx72h dry shelving units
36wx72h dry shelving units
Hobart freezer with counter
Baking sheet cart
Pots Pan Prep Utensils
Standup glass door display refrigerator
Meat Bowl Cutter and Mixer
Drive Thru Headset System