

# SUBLEASE AVAILABLE



## 10000 MIDLANTIC DRIVE MOUNT LAUREL, NJ

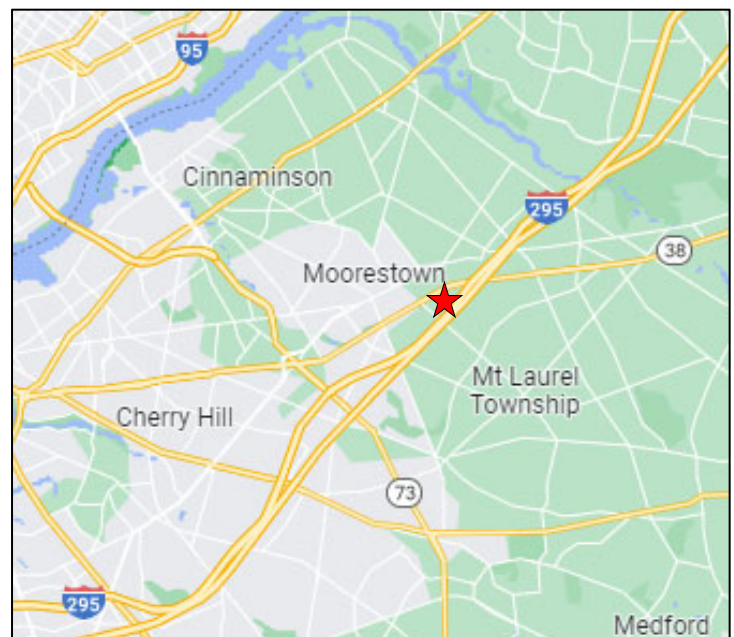


### SPACE FEATURES

- Class “A” Office Space
- 2,507+/- Rentable Square Feet
- Fourth Floor with elevated views
- Fully wired for Plug and Play
- Furniture/Fixtures Available
- **\$14.00 psf NNN (well under market)**
- Term expires March 31, 2026

### PROPERTY FEATURES

- Set on 250 acres at the intersection of I-295 and Route 38
- Located 15 miles to Center City Philadelphia and 4 miles to Cherry Hill.



For more information contact:

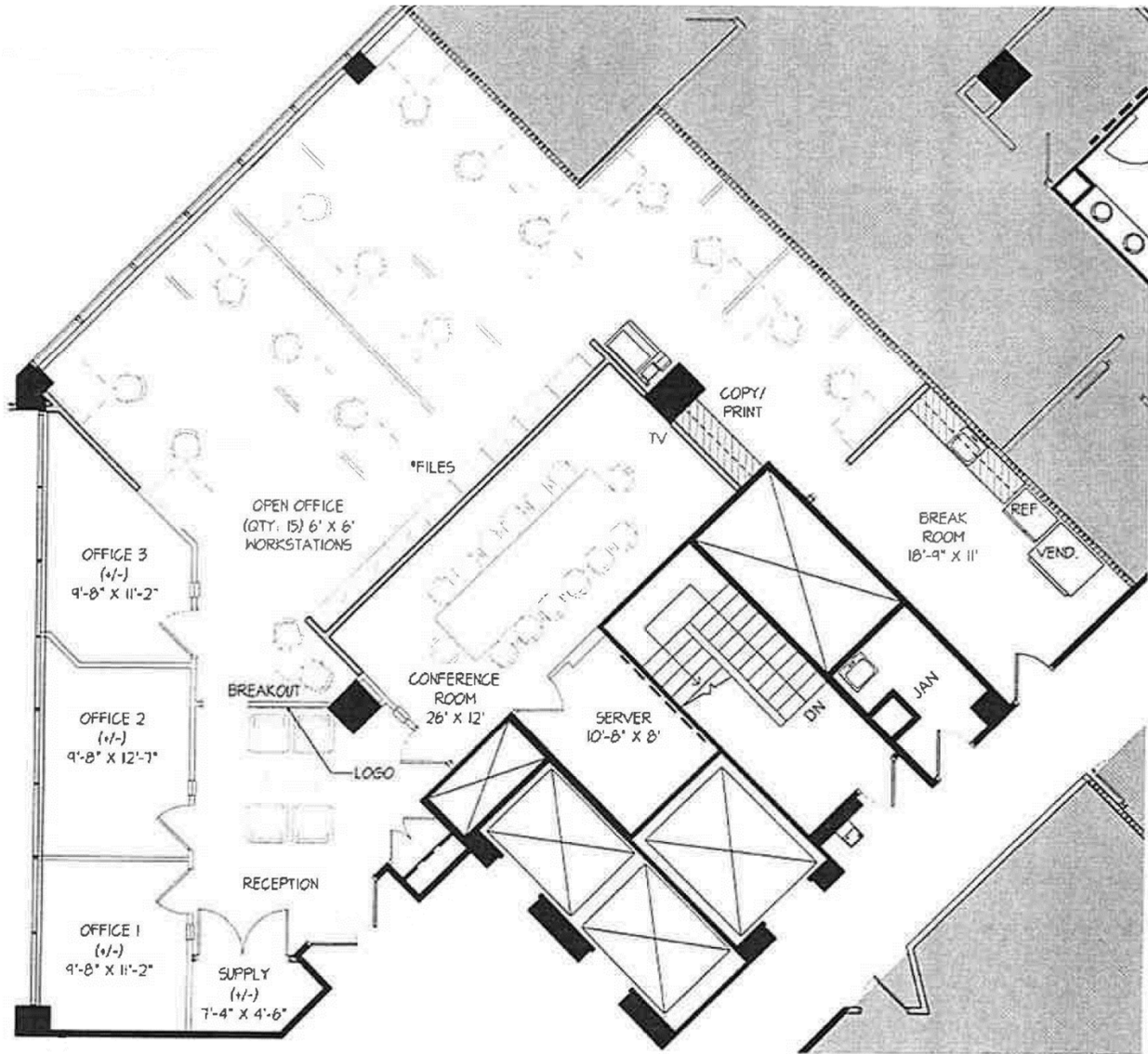
**DAVID BUTERA**

267-767-1100  
dbutera@gola.com

SUBLEASE AVAILABLE



2,507+/- RSF Available  
10000 MIDLANTIC DRIVE  
MOUNT LAUREL, NJ



For more information contact:

**DAVID BUTERA**  
267-767-1100  
dbutera@gola.com