

FOR LEASE

150 N DURANGO DRIVE

Las Vegas, NV 89145



Pete Janemark, CCIM

Senior Vice President

D: 702.527.7923 | C: 702.885.7383

pete.janemark@svn.com

NV #S.76731



PROPERTY SUMMARY



OFFERING SUMMARY

BUILDING SIZE:	17,987 SF
AVAILABLE SF:	550 - 2,599 SF
LOT SIZE:	2.06 Acres
YEAR BUILT:	2001
ZONING:	C-1
APN:	138-28-401-011

PROPERTY OVERVIEW

This elegant colonial style two story office building features upgraded finishes, a large open lobby area, high ceilings, and card-lock security. The building features high ceilings and wide hallways throughout, as well as a very elegant double stairway. A community conference room is also available for use by all tenants within the building.

PROPERTY HIGHLIGHTS

- Plentiful covered parking available for tenants
- Built in workspace cubicles with cabinetry
- Reception, Six (6) private offices, and conference room
- Community conference room

PETE JANEMARK, CCIM

O: 702.527.7923

pete.janemark@svn.com

NV #S.76731

COMMUNITY CONFERENCE ROOM

Tenants at this property also have the ability to use this large, well equipped conference center, complete with a catering kitchen, vending machines, and a media system. This conference center is located on the ground floor, directly inside the main entrance to the building and is available free of charge to existing tenants. Reservations are handled via the on-site management office.



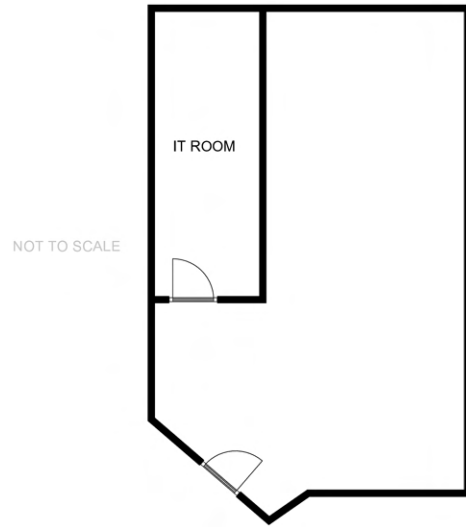
PETE JANEMARK, CCIM

O: 702.527.7923

pete.janemark@svn.com

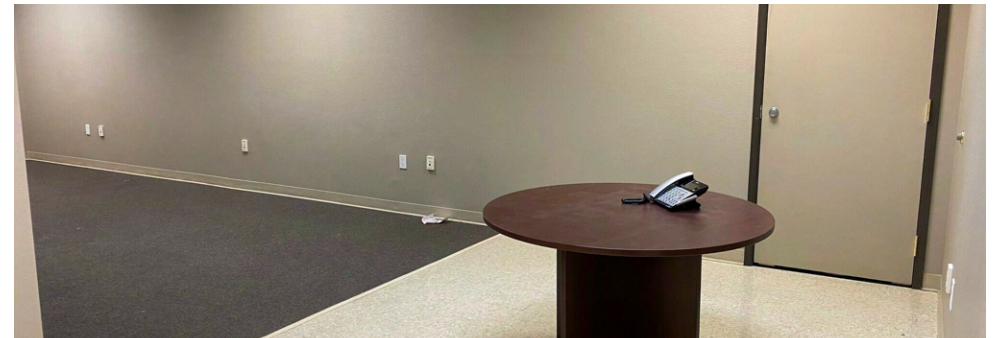
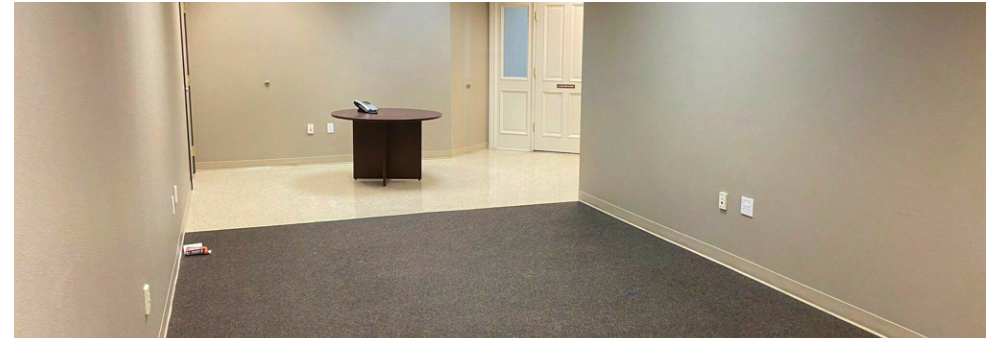
NV #S.76731

150 N DURANGO DRIVE - SUITE 150 - ±550 SF



SUITE DESCRIPTION

This is a very efficient space with a large storage/tech room. The space is inside a larger building that is very elegant tiled and furnished. There is a break room on the same floor as the space, right next to the front door. The space has room for a desk and formal meeting area. The space has easy access to the main lobby area of the building with a wide and notable front door to the suite.



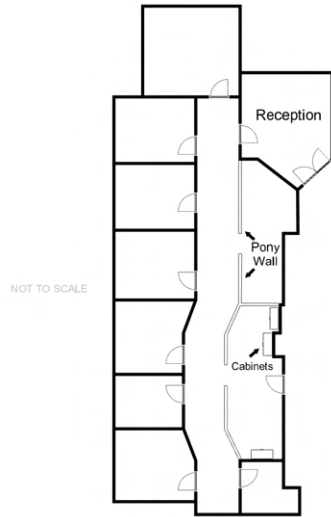
PETE JANEMARK, CCIM

O: 702.527.7923

pete.janemark@svn.com

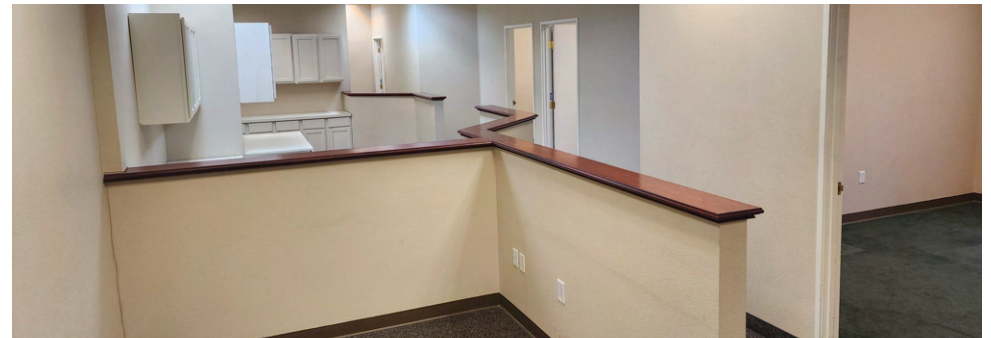
NV #S.76731

150 N DURANGO DRIVE - SUITE 290 - 2,599 SF



SUITE DESCRIPTION

This elegant second story suite features an elegant reception, six individual offices, four cubicle areas, an 18'x23' conference room, storage, and two entrances.



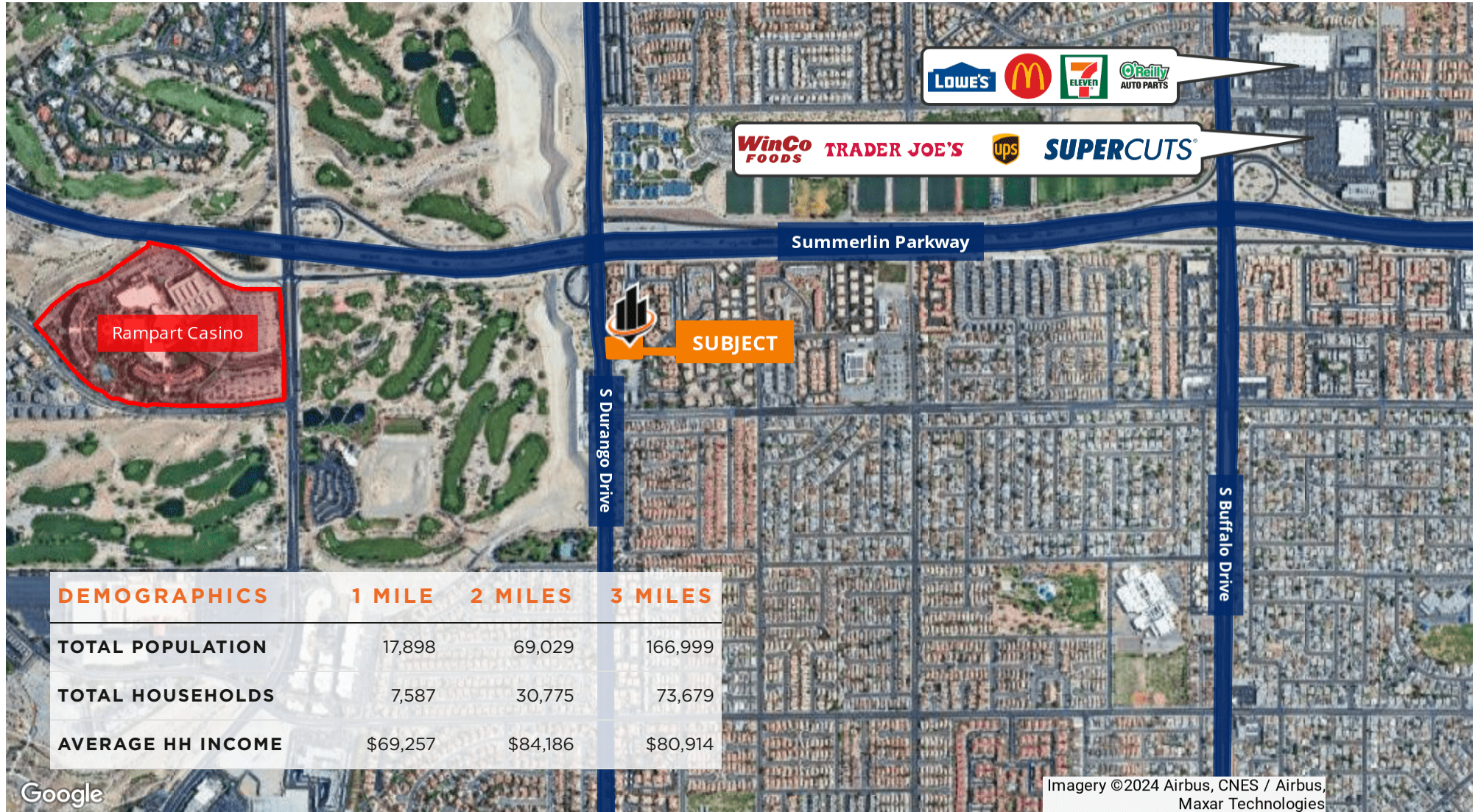
PETE JANEMARK, CCIM

O: 702.527.7923

pete.janemark@svn.com

NV #S.76731

LOCATION MAP



PETE JANEMARK, CCIM
 O: 702.527.7923
 pete.janemark@svn.com
 NV #S.76731