

438 – 462 E. EDGEWOOD BLVD.
LANSING, MICHIGAN

RETAIL FOR LEASE

1,611 – 23,782 Square Feet Available



**SIGNATURE
ASSOCIATES**
KNOW SIGNATURE | KNOW RESULTS

EDGEWOOD TOWNE CENTER



PROPERTY FEATURES

- 1,611 – 23,782 square feet available
- Established power center located at I-96 and S. Cedar Street
- Shadow anchored by Target
- Join national retailers in this Towne Center which features a diverse tenant mix, tremendous visibility, and ample on-site parking
- Excellent freeway signage opportunity
- Lease Rate: \$16.00/sq. ft. NNN



For more information, please contact:

JEFF HIGGINS
(248) 359 0650
jhiggins@signatureassociates.com

RICHARD PIFER
(248) 799 3158
rpifer@signatureassociates.com

SIGNATURE ASSOCIATES
One Towne Square, Suite 1200
Southfield, MI 48076
www.signatureassociates.com

438 – 462 E. Edgewood Blvd. – Lansing, Michigan

Retail For Lease

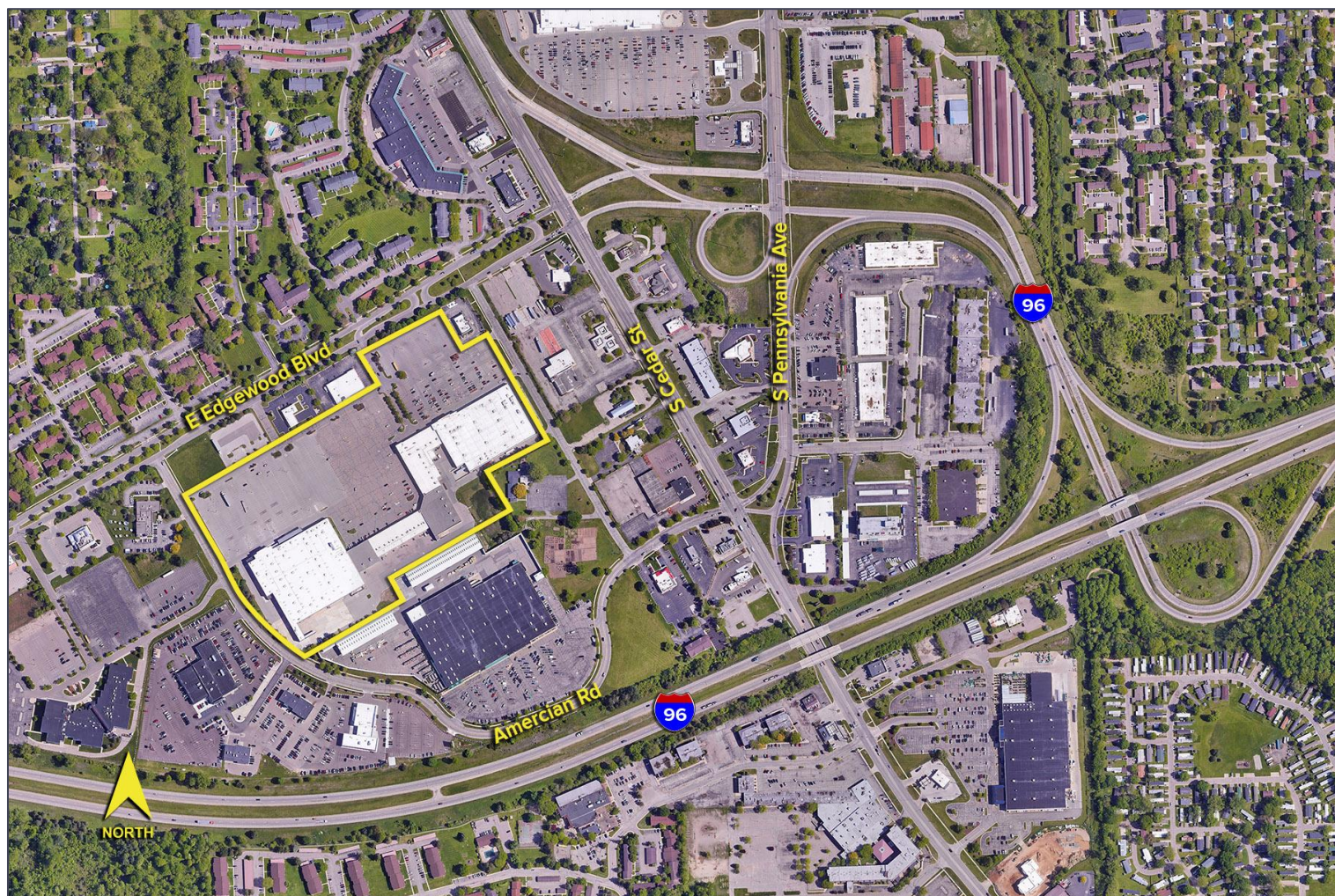
1,611 – 23,782
Square Feet
AVAILABLE

DEMOGRAPHICS

	POPULATION	MED. HH INCOME
1 MILE	8,925	\$52,889
3 MILE	64,824	\$64,304
5 MILE	116,132	\$64,294

TRAFFIC COUNTS (TWO-WAY)

8,972	Edgewood Blvd. W of Cedar St.
13,773	Cedar St. S of Edgewood Blvd.
13,894	Cedar St. N of Edgewood Blvd.
54,013	I-96 & Cedar St.



For more information, please contact:

JEFF HIGGINS
(248) 359 0650
jhiggins@signatureassociates.com

RICHARD PIFER
(248) 799 3158
rpifer@signatureassociates.com

SIGNATURE ASSOCIATES
One Towne Square, Suite 1200
Southfield, MI 48076
www.signatureassociates.com

Information is subject to verification and no liability for errors or omissions is assumed. Price is subject to change and listing withdrawal.