

CROSSROADS BUILDING

FOR LEASE



PROPERTY DETAILS

1464 E. Ridgeline Dr., South Ogden, UT 84405

See next page for pricing

- 196–1,501 SF available
- Immediate access to Highway 89 and Harrison Boulevard
- Parking ratio: 4:1,000 SF
- Corner suite
- Excellent natural light
- Excellent medical/office location
- Common breakroom and conference room
- Tenant responsible for in-suite janitorial



CHRIS FALK, CCIM, SIOR
cfalk@newmarkmw.com
direct 801.499.6514
[View Profile](#)

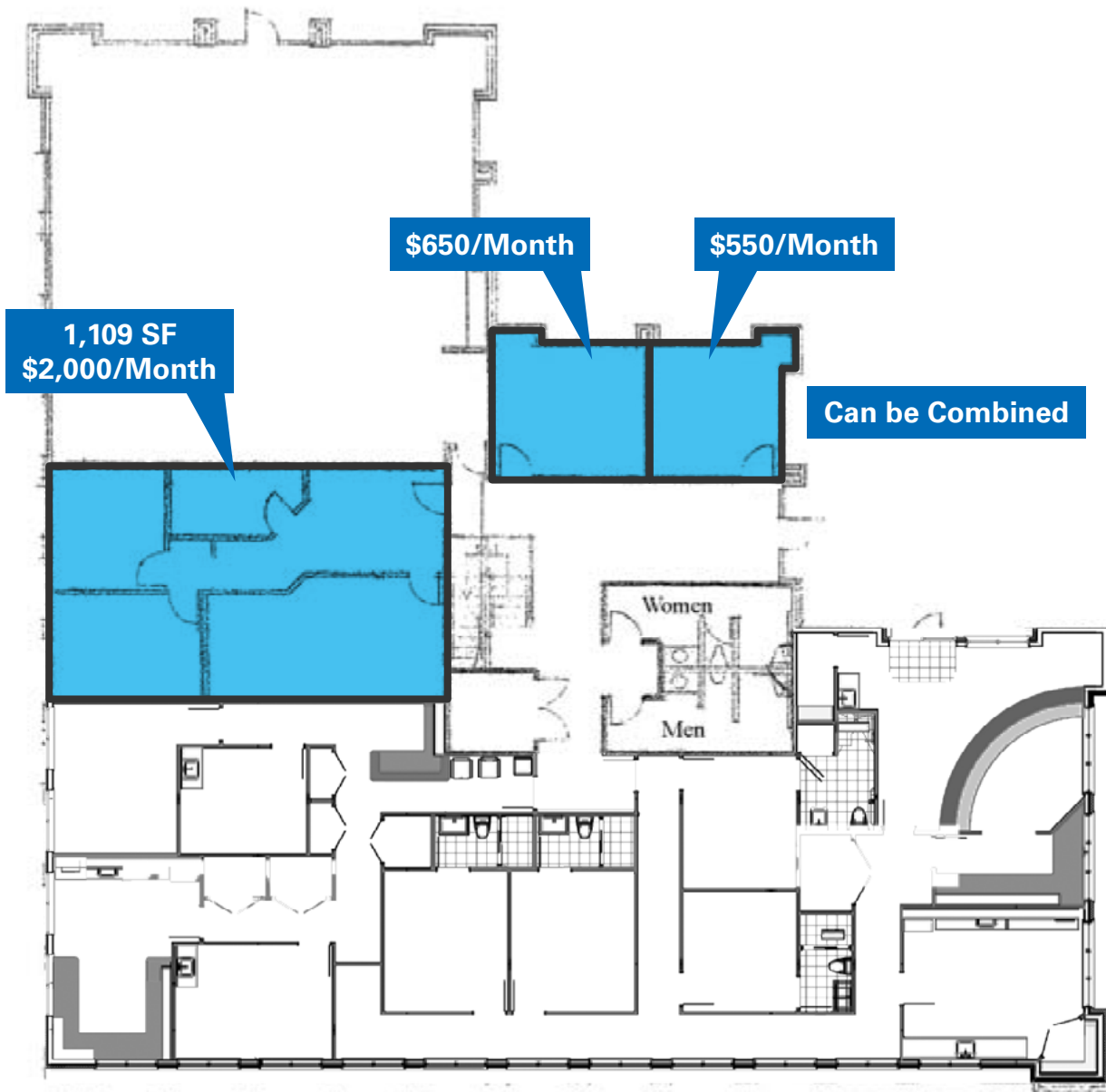
BRAXTON WILLIE, CCIM
bwillie@newmarkmw.com
direct 801.803.3334
[View Profile](#)

BRANSON WOOD
bwood@newmarkmw.com
direct 801.510.5207
[View Profile](#)

**FULL SERVICE
COMMERCIAL REAL ESTATE**
1410 S University Park Blvd, Ste 120
Clearfield, Utah 84015
Office 801.578.5580
www.newmarkmw.com

CROSSROADS BUILDING

FLOOR PLAN

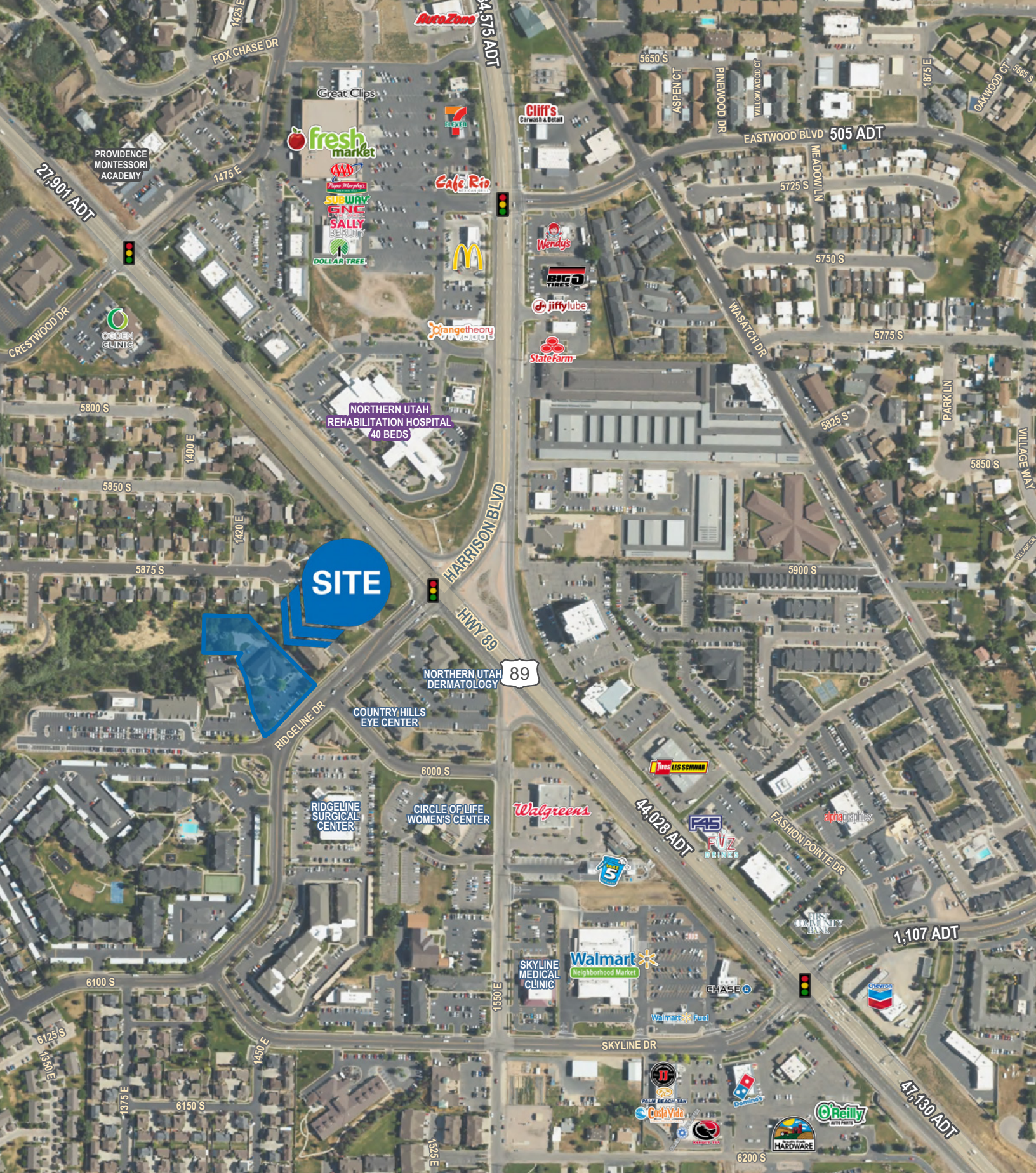


CHRIS FALK, CCIM, SIOR
cfalk@newmarkmw.com
direct 801.499.6514
[View Profile](#)

BRAXTON WILLIE, CCIM
bwillie@newmarkmw.com
direct 801.803.3334
[View Profile](#)

BRANSON WOOD
bwood@newmarkmw.com
direct 801.510.5207
[View Profile](#)

**FULL SERVICE
COMMERCIAL REAL ESTATE**
1410 S University Park Blvd, Ste 120
Clearfield, Utah 84015
Office 801.578.5580
www.newmarkmw.com



CHRIS FALK, CCIM, SIOR
 cfalk@newmarkmw.com
 direct 801.499.6514
[View Profile](#)

BRAXTON WILLIE, CCIM
 bwillie@newmarkmw.com
 direct 801.803.3334
[View Profile](#)

BRANSON WOOD
 bwood@newmarkmw.com
 direct 801.510.5207
[View Profile](#)

**FULL SERVICE
 COMMERCIAL REAL ESTATE**
 1410 S University Park Blvd, Ste 120
 Clearfield, Utah 84015
 Office 801.578.5580
www.newmarkmw.com