

# 1007 CLAY STREET OAKLAND

2nd Generation Restaurant / Retail  
6,137 SF; Can Be Demised For Multiple Uses

Jamie Flaherty-Evans  
510-334-8606  
jamie@chromataRE.com  
DRE Lic # 01432663

Kristel Railsback  
916.770.9187  
kristel@chromataRE.com  
DRE Lic # 02203999



**CHROMATA**  
RETAIL



**ADDRESS** 1007 Clay Street

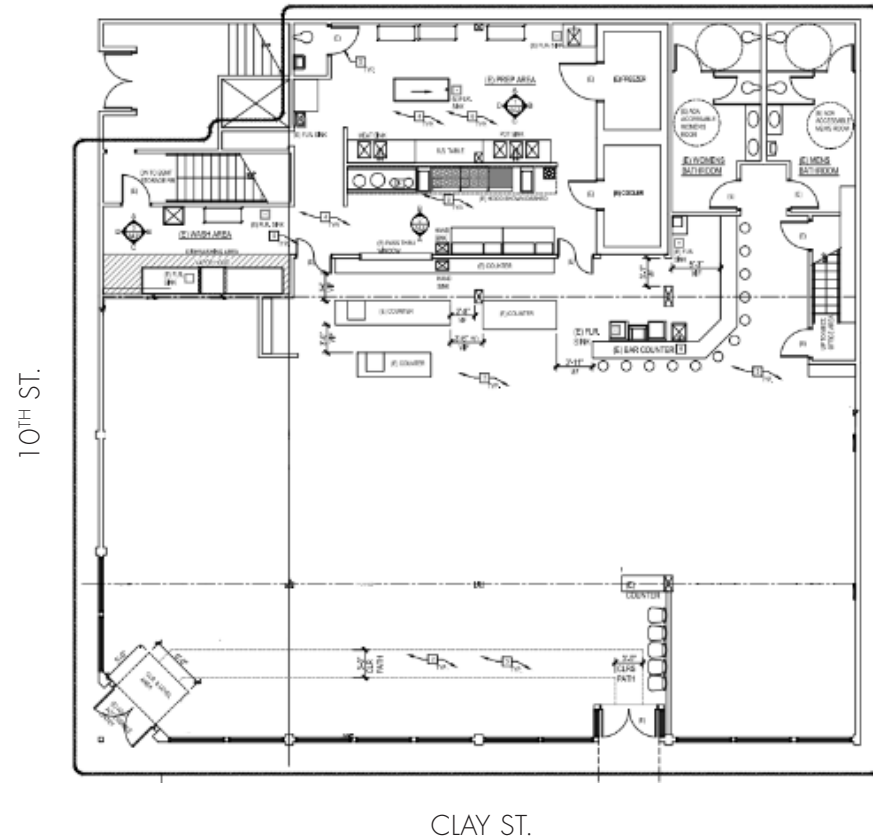
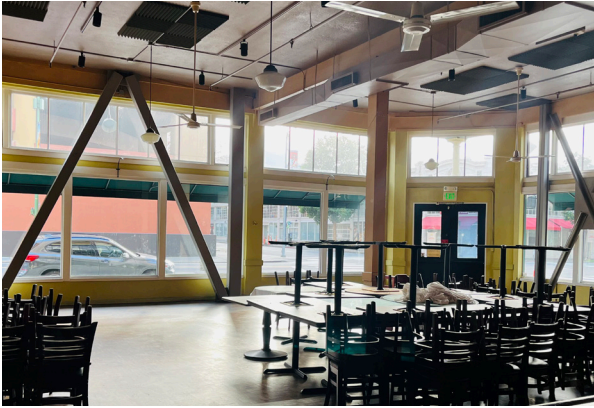
**AVAILABLE SPACE** 6,137 SF; Can Be Demised For Multiple Uses

**RENTAL RATE** Negotiable / NNN

## NEIGHBORHOOD HIGHLIGHTS

- Over 4,000 new residential units have been completed in the Uptown / Downtown/ Jack London area and several more new residential projects are under construction
- 2 blocks to 12th Street BART Station & City Center of Oakland, 10 min BART ride to San Francisco
- Marriott Hotel & Convention Center one block away
- Old Oakland shopping/dining area is located one block away
- Excellent access to surrounding neighborhoods: Uptown, Alameda & Chinatown
- World class restaurants and local breweries in walking distance
- Over 400 new hotel rooms approved or proposed less than a mile from the property
- Old Oakland Farmers' Market held every Friday
- Surrounded by great tenants such as Sweetgreen, Blue Bottle Coffee, Square Pie Guys, Swan's Marketplace, Horn BBQ and Popoca





## SPACE HIGHLIGHTS

- 2nd Generation restaurant space with large kitchen. Included: 15' Type 1 hood, walk-in and large prep and dishwashing areas.
- Space can be demised to accommodate a variety of uses with common area restrooms and new entrances, minimum 1,500 SF.
- Corner location, high ceilings, and prominent window frontage.
- Small office/ storage area in mezzanine level; Additional storage avail in basement.
- Sidewalk seating / Parklet option is available per City of Oakland.



### RETAIL & RESTAURANTS

Swan's Market

- Cupcakin'
- Cook and Her Farmer
- Huangcheng Noodle House
- Taylor's Sausage
- Huan Cheng Potstickers
- Las Guerreras

Square Pie Guys

Sweetgreen

Blue Bottle

Ratto's Deli & Market

Popoca

Saucy

Sante Adairius

Horn BBQ

Understory

Oeste Bar

E14 Gallery

OVRHL

Fitness Training Club

Bookmark

Sacred Tattoo

Oaklandia Cafe

Penelope

District

Fort Green

Marriott Hotel / Convention Center

City Center

Old Oakland Farmers Market



# CHROMATA RETAIL

Jamie Flaherty-Evans  
510-334-8606  
jamie@chromataRE.com  
DRE Lic # 01432663

Kristel Railsback  
916.770.9187  
kristel@chromataRE.com  
DRE Lic # 02203999

[chromataRE.com](http://chromataRE.com)