

FOR SALE

# WAREHOUSE WITH YARD

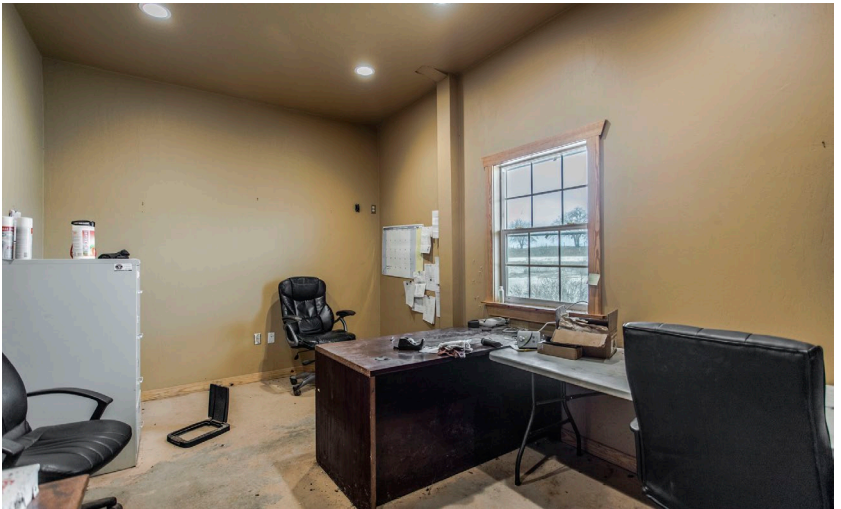
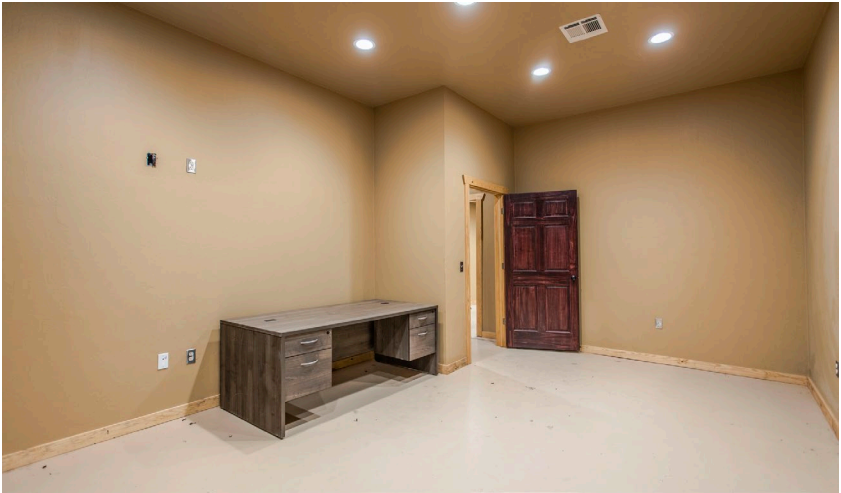
13616 N 2920 Road, Dover, Oklahoma 73734



**Sale Price: \$925,000**

- Building Size: 9,600± SF  
- 2,400± SF, Office Space
- Lot Size: 20± AC
- (2) 12'x14' OH Doors
- (2) Drive-Through Bays
- 18' Clear Height
- Built in 2018
- Sizeable Gravel Yard
- In-floor Inspection Bay
- 110,000 Gallon Clean Water Frac Pond On-site
- Warehouse includes conference room, kitchen, and multiple private offices





# *13616 N 2920 Road Dover, OK 73734*

---

## PLEASE CONTACT:

**Jason Hammock, SIOR, CCIM**

First Vice President  
+1 405-315-0725  
jason.hammock@cbre.com

**Caitlin Mazaheri, SIOR, CCIM**

Vice President  
+1 405-413-2315  
caitlin.mazaheri@cbre.com

**Joe Summers**

Senior Associate  
+1 405-831-3851  
joe.summers@cbre.com

© 2024 CBRE, Inc. All rights reserved. This information has been obtained from sources believed reliable but has not been verified for accuracy or completeness. You should conduct a careful, independent investigation of the property and verify all information. Any reliance on this information is solely at your own risk. CBRE and the CBRE logo are service marks of CBRE, Inc. All other marks displayed on this document are the property of their respective owners, and the use of such logos does not imply any affiliation with or endorsement of CBRE. Photos herein are the property of their respective owners. Use of these images without the express written consent of the owner is prohibited.