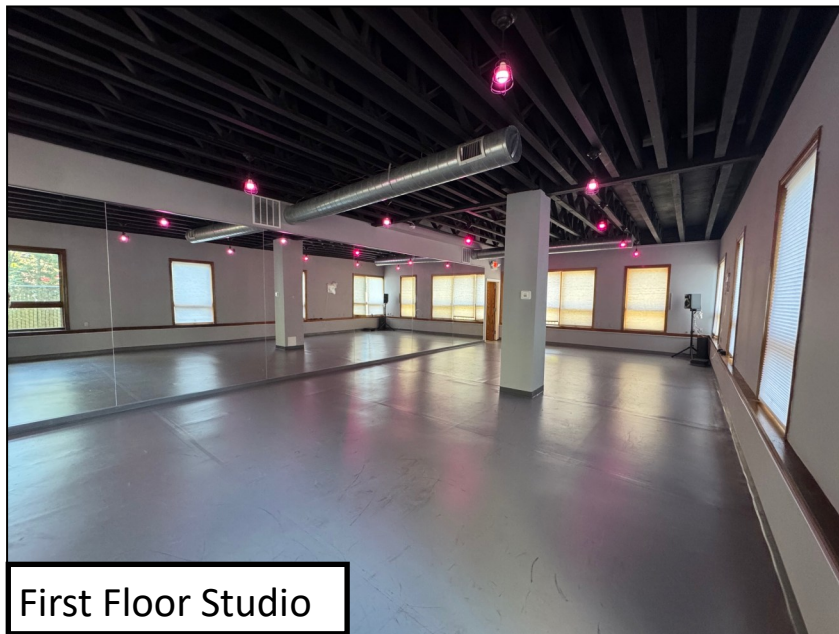


**FREESTANDING BUILDING · 3,200 rsf div to 1,600 rsf**



**105 E. Northfield Road, Livingston, NJ**



**First Floor Studio**

**Walkable to:**



**Exclusive Parking Lot  
Approx. 17,000 daily cars\***



**Ryan E. Tiger**  
Broker of Record - Punia Company, LLC  
Licensed Real Estate Broker

c } 973.699.7714  
e } [rtiger@puniacompany.com](mailto:rtiger@puniacompany.com)

[puniacompany.com](http://puniacompany.com)

**Additional Locations:**

- Livingston
- Metropark
- Parsippany
- Hanover
- Lawrence
- Princeton
- Mountain Lakes
- Hackettstown
- Freehold
- Somerset
- Jersey City
- Mountainside

Subject to possession. This information has been obtained from sources believed reliable. We have not verified it and make no guarantee, warranty or representation about it. Any projections, opinions, assumptions or estimates used are for example only and do not represent the current or future performance of the property. You and your advisors should conduct a careful, independent investigation of the property to determine to your satisfaction the suitability of the property for your needs. This transmission of information is subject to errors and omissions, change or withdrawal without notice. \*According to 2019 data from [https://www.njtrans.org/map/tms\\_reports/reports/DV03S\\_3-4-302\\_5-14-2019.pdf](https://www.njtrans.org/map/tms_reports/reports/DV03S_3-4-302_5-14-2019.pdf)