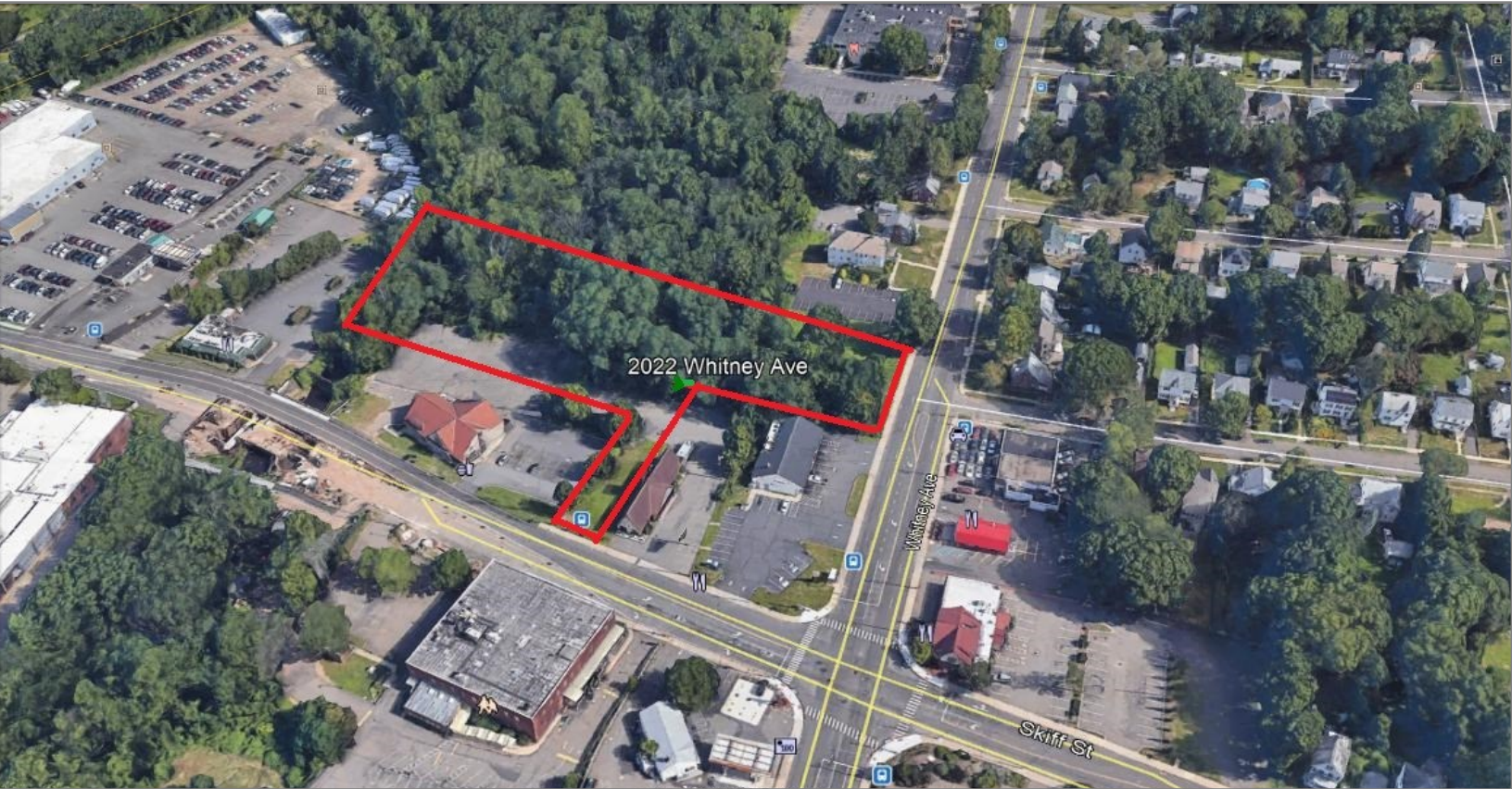


**FIRST TIME OFFERED**  
**Hamden Development Site**  
**Frontage on both Whitney Ave., & Skiff St.**



**DEVELOPMENT OPPORTUNITY**

**TWO PARCELS**

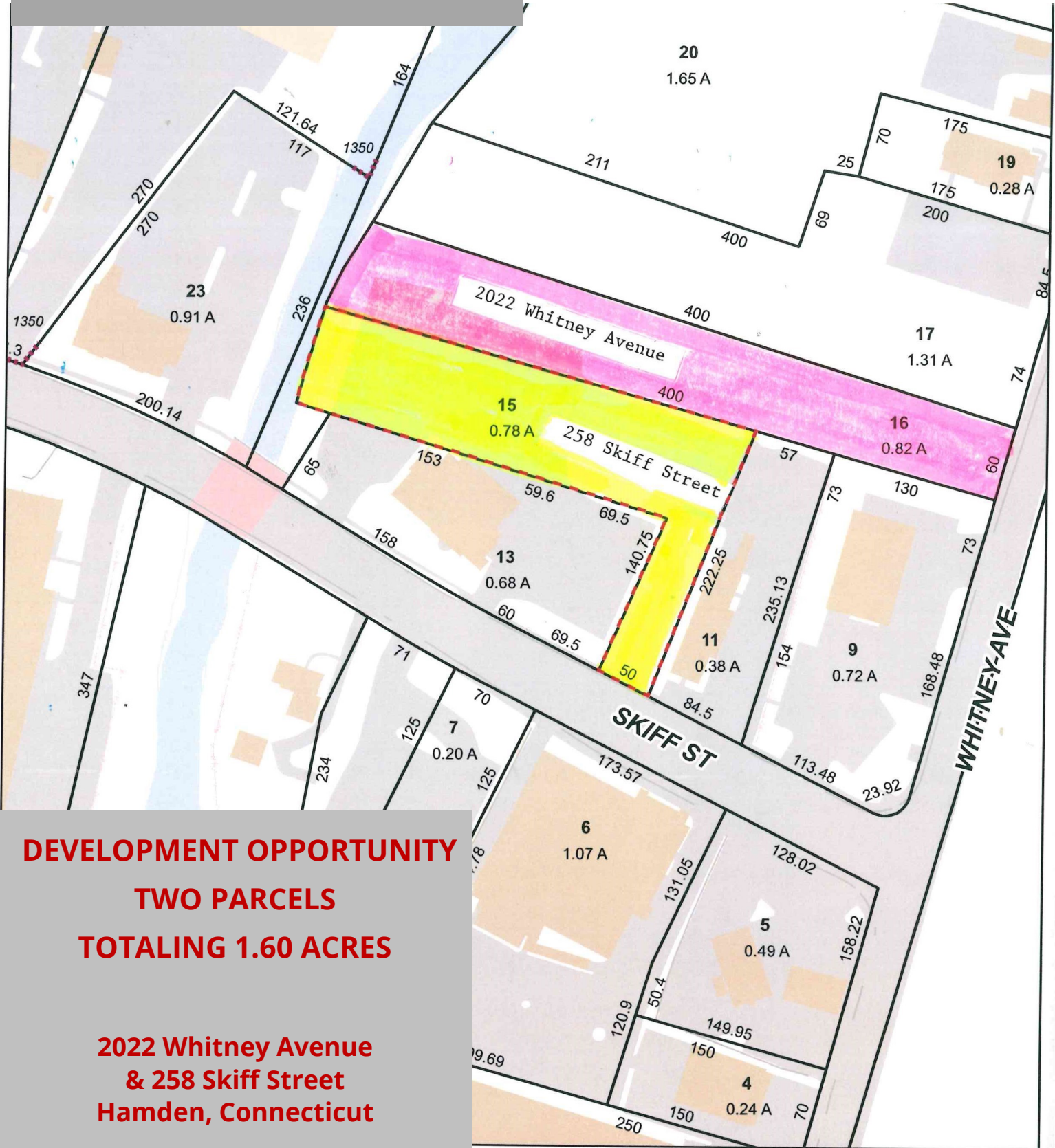
**TOTALING 1.6 ACRES**

**2022 Whitney Avenue  
& 258 Skiff Street  
Hamden, Connecticut**

**Stephen Press, SIOR**  
**203.288.1900 x123**  
**spress@presscuzzo.com**

# FIRST TIME OFFERED

## Hamden Development Site



**DEVELOPMENT OPPORTUNITY**  
**TWO PARCELS**  
**TOTALING 1.60 ACRES**

**2022 Whitney Avenue**  
**& 258 Skiff Street**  
**Hamden, Connecticut**

# TWO PARCEL 1.6 ACRE SITE

Hamden  
Development Site

**2022 Whitney Avenue: .82 Acres**  
**258 Skiff Street: .78 Acres**

**Offered at: \$795,000.**

## PROPERTY HIGHLIGHTS

- Close to intersection of Skiff and Whitney
- All public utilities available
- T-5 Zone
- High Density Zone
- Prime Whitney Avenue location

## PROPERTY SUMMARY

- Frontage on Whitney and Skiff
- Combined 1.6 Acres
- Retail, office, multi-family
- Many uses permitted
- High traffic location

Unusual opportunity to purchase two contiguous parcels. 60' frontage on Whitney Avenue and 50' frontage on Skiff Street.

Contact Stephen Press, SIOR  
203.288.1900 x123  
spress@presscuozzo.com



[www.presscuozzo.com](http://www.presscuozzo.com)

**Stephen Press, SIOR**  
**203.288.1900 x123**