



Prime industrial warehouse

- Wired security system
- 17,000 sf of warehouse with 3,000 sf of office on lower level and 3,500 sf of office on upper level
- 30 free surface parking on upper level and 10 free surface parking on lower level
- 21'-22' clear height
- 3 dock high doors (8'x10') and 1 drive-in door (10'x12')
- Building has sprinklers

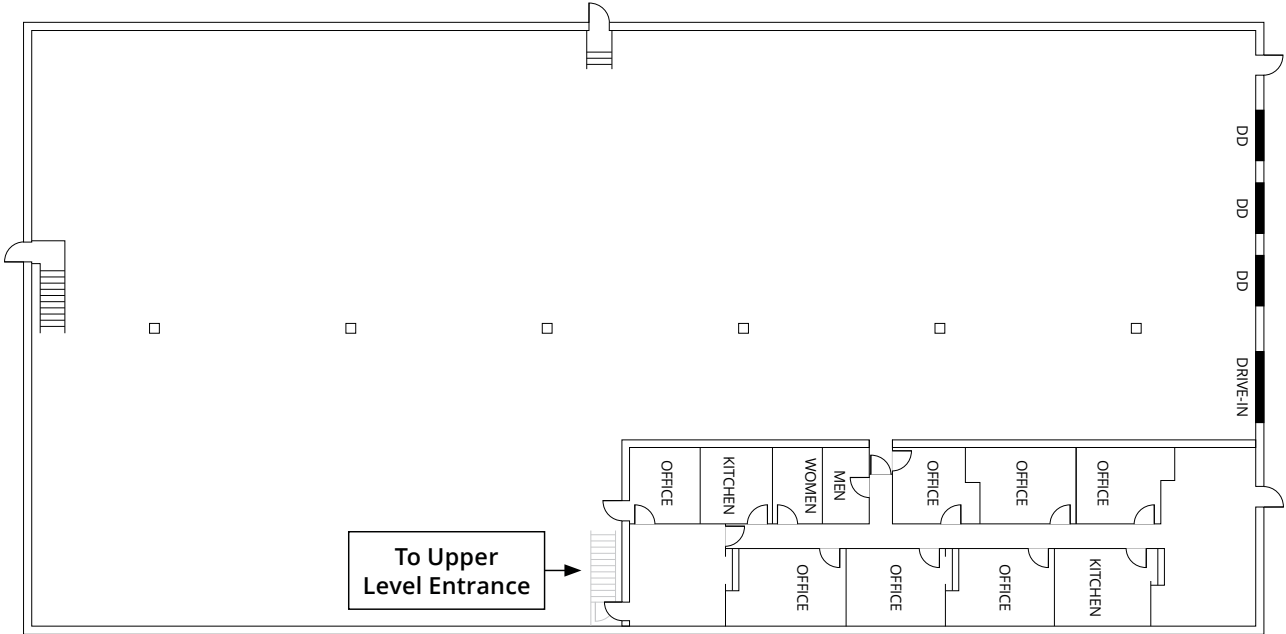
Building	23,500 sf
Office	6,500 sf
Lease rate	\$11.50/sf
NNN	\$4.57/sf
Year built	1985
Power	120/208 volt
Zoning	C-1 with PUD overlay
County	Adams County

Get more information

Dawn McCombs
Principal
+1 720 508 8110
dawn.mccombs@avisonyoung.com

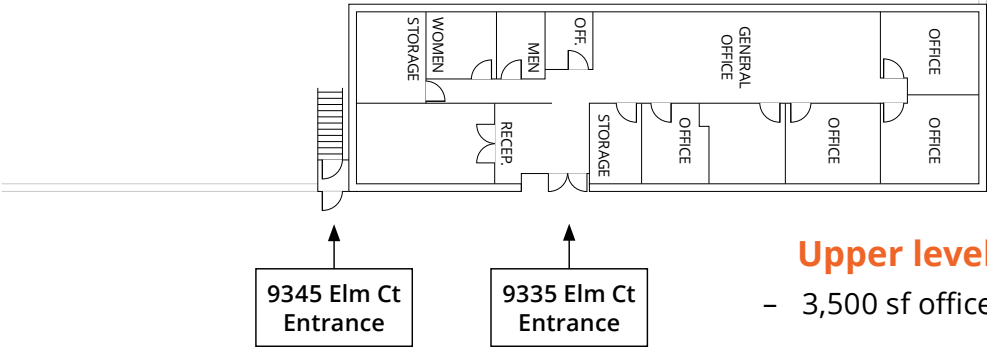
Ryan Almaleh
Associate
+1 303 390 0961
ryan.almaleh@avisonyoung.com

Floor plan



Lower level

- 17,000 sf warehouse
- 3,000 sf office



Upper level

- 3,500 sf office

**Get more
information**

Dawn McCombs
Principal
+1 720 508 8110
dawn.mccombs@avisonyoung.com

Ryan Almaleh
Associate
+1 303 390 0961
ryan.almaleh@avisonyoung.com

Industrial warehouse for lease

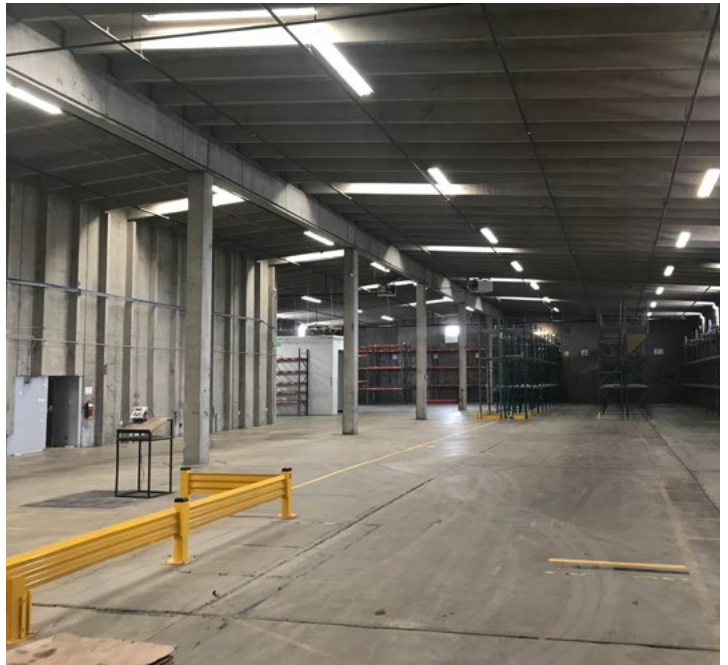
9335-9345 N Elm Court
Federal Heights, CO 80260



**Get more
information**

Dawn McCombs
Principal
+1 720 508 8110
dawn.mccombs@avisonyoung.com

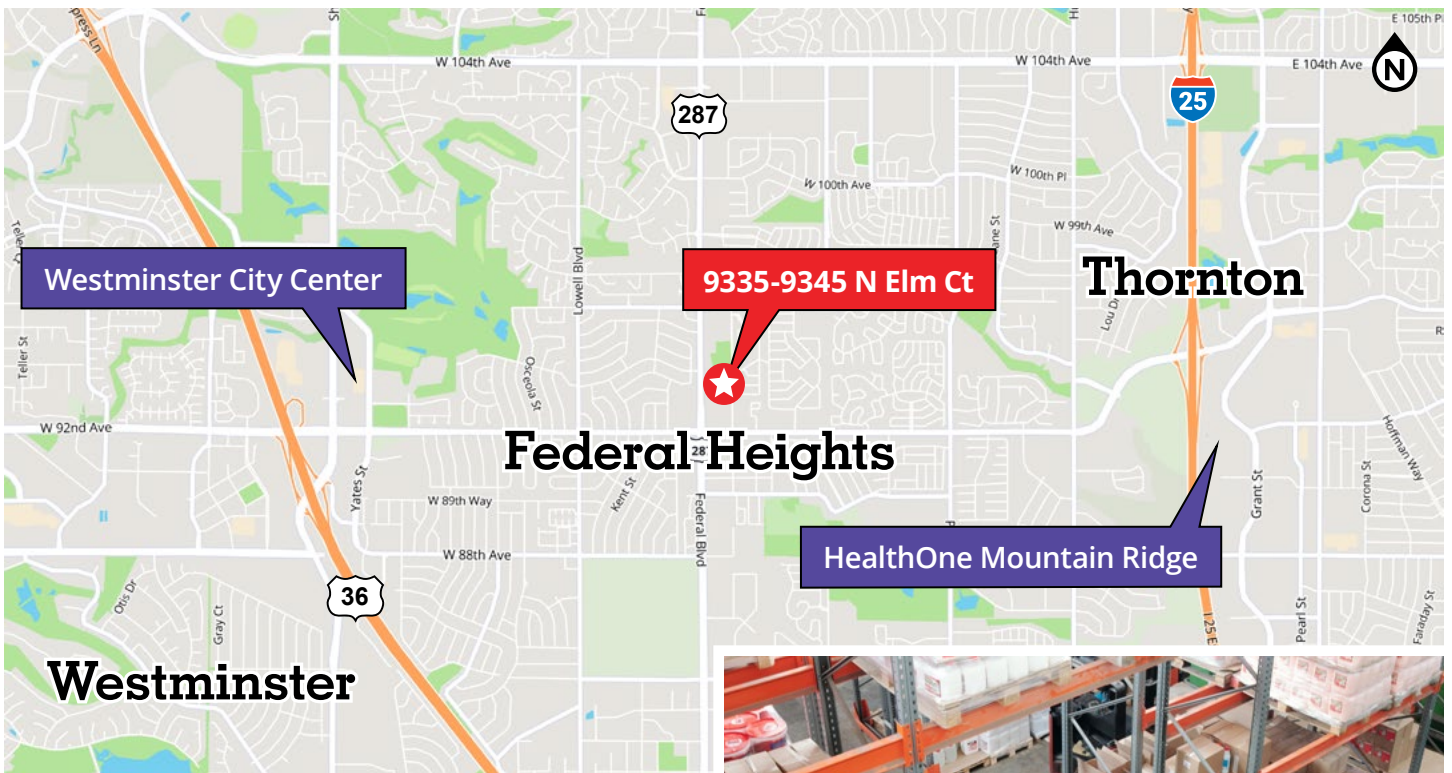
Ryan Almaleh
Associate
+1 303 390 0961
ryan.almaleh@avisonyoung.com



**Get more
information**

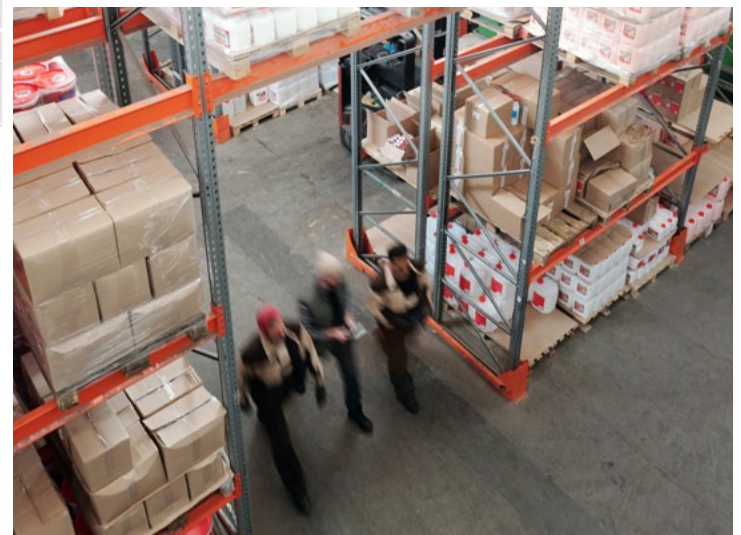
Dawn McCombs
Principal
+1 720 508 8110
dawn.mccombs@avisonyoung.com

Ryan Almaleh
Associate
+1 303 390 0961
ryan.almaleh@avisonyoung.com



Effortless connectivity to major highways

- 9335-9345 N Elm Ct offers convenient access to I-25 and Highway 36 with direct connection via W Thornton Pkwy/W 92nd Ave
- Situated approximately 2.0 miles east of the Westminster City Center shopping center
- 25 minutes drive to Boulder, CO via Highway 36 and 22 minutes drive to Denver, CO via I-25



Restaurants located within a 10-minute drive



Get more information

Dawn McCombs
Principal
+1 720 508 8110
dawn.mccombs@avisonyoung.com

Ryan Almaleh
Associate
+1 303 390 0961
ryan.almaleh@avisonyoung.com