

# FORMER RITE AID AVAILABLE!

3710 SHAWNEE ROAD, LIMA, OHIO 45801



**FOR SALE & FOR LEASE**  
**14,564 SF | 1.46 AC**

**Kevin Moss**  
Senior Vice President  
216 999 4541  
[3710shawneerd@deltafilings.com](mailto:3710shawneerd@deltafilings.com)

**CBRE, Inc.**  
950 Main Ave, Suite 800  
Cleveland, Ohio 44113  
[www.cbre.us](http://www.cbre.us)

**CBRE**



# THE OPPORTUNITY

- Freestanding 14,564 SF former Rite Aid available on 1.46 AC at a signalized hard corner
  - Lease: \$10/SF NNN
  - Sale: \$1,300,000
- The site is located at main/main in the southwest corridor of Lima at a signalized intersection with over 20k+ VPD at the intersection
- Neighboring users include CVS, Dollar General, Apollo Career Center, Joint Systems Manufacturing Center and more!
- The market has an average household income of \$86,417 in a 20 minute drive time
- Zoned B-2 Business and Commercial
- 60 total parking spaces and a double drive-thru



## QUICK STATS – 20 MINUTE DRIVE RADIUS



DAYTIME  
POPULATION  
**109,577**



POPULATION  
**106,605**



HOUSEHOLDS  
**43,960**



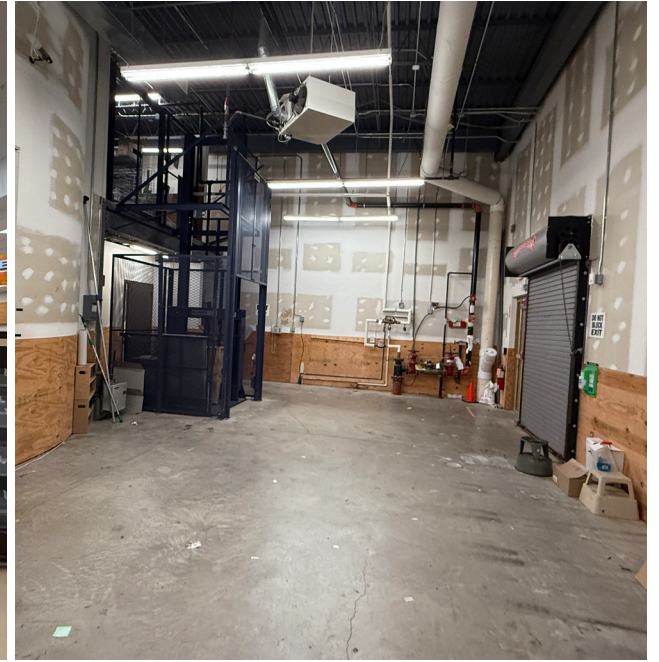
POPULATION  
25 & OVER  
**73,889**



AVG. HOUSEHOLD  
INCOME  
**\$86,417**

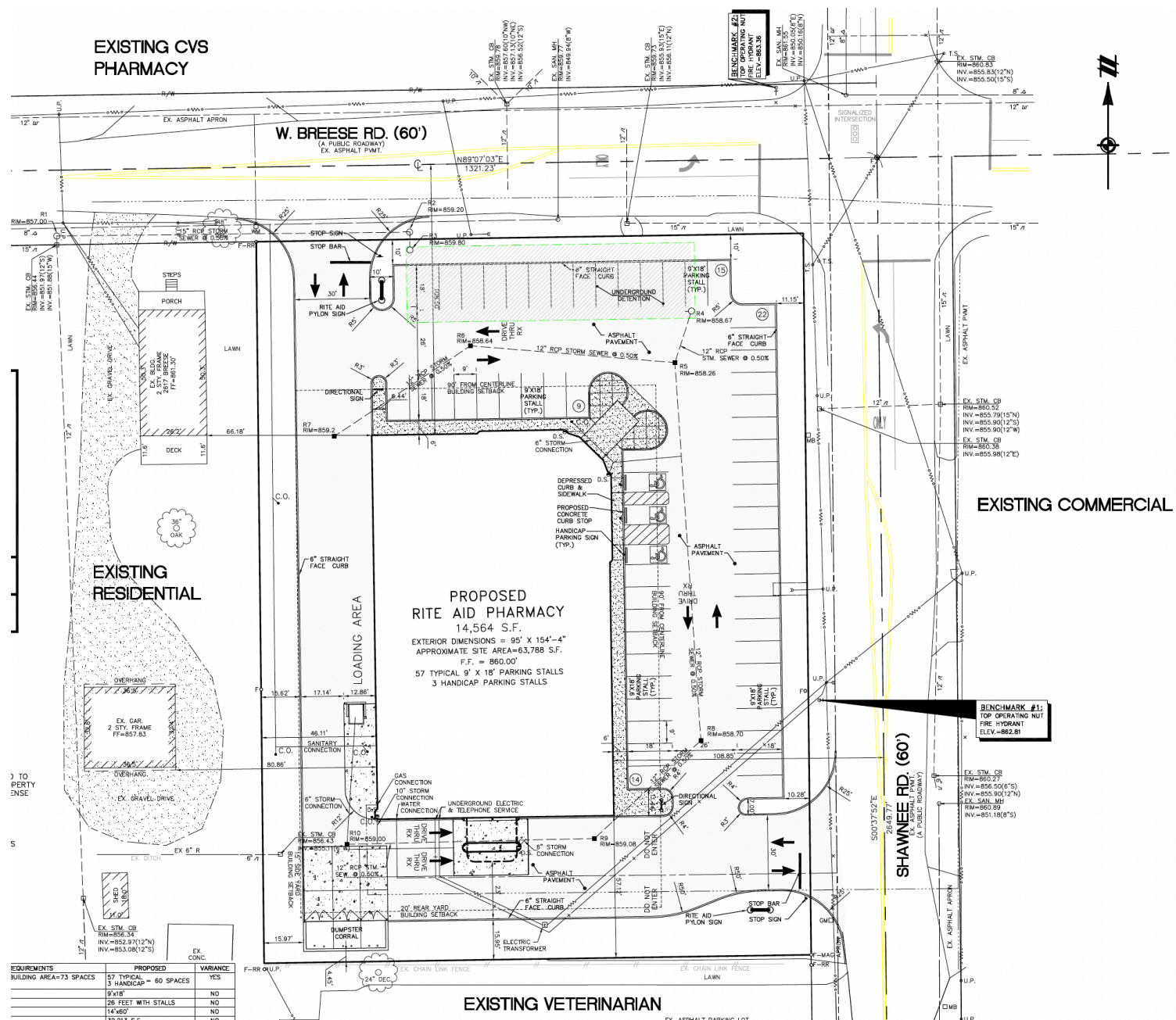


# INTERIOR PICTURES





# SURVEY





# AERIAL VIEW



# DEMOGRAPHICS

	10 MIN	20 MIN	30 MIN
2024 Population - Current Year Estimate	36,030	106,605	185,320
2024 Daytime Population	45,038	109,577	187,627
2024 Households - Current Year Estimate	15,257	43,960	74,735
2024 Average Household Income	\$89,397	\$86,417	\$89,376
2029 Average Household Income Projection	\$99,518	\$95,854	\$98,642
2024 Median Household Income	\$68,093	\$67,008	\$70,818
2024 Population Over 25	24,945	73,889	127,203

## CONTACT US

### Kevin Moss

Senior Vice President

216 999 4541

3710shawneerd@deltafilings.com

### CBRE, Inc.

950 Main Ave, Suite 800

Cleveland, Ohio 44113

www.cbre.us

© 2025 CBRE, Inc. All rights reserved. This information has been obtained from sources believed reliable, but has not been verified for accuracy or completeness. You should conduct a careful, independent investigation of the property and verify all information. Any reliance on this information is solely at your own risk. CBRE and the CBRE logo are service marks of CBRE, Inc. All other marks displayed on this document are the property of their respective owners, and the use of such logos does not imply any affiliation with or endorsement of CBRE. Photos herein are the property of their respective owners. Use of these images without the express written consent of the owner is prohibited. Licensed Real Estate Broker.

**CBRE**